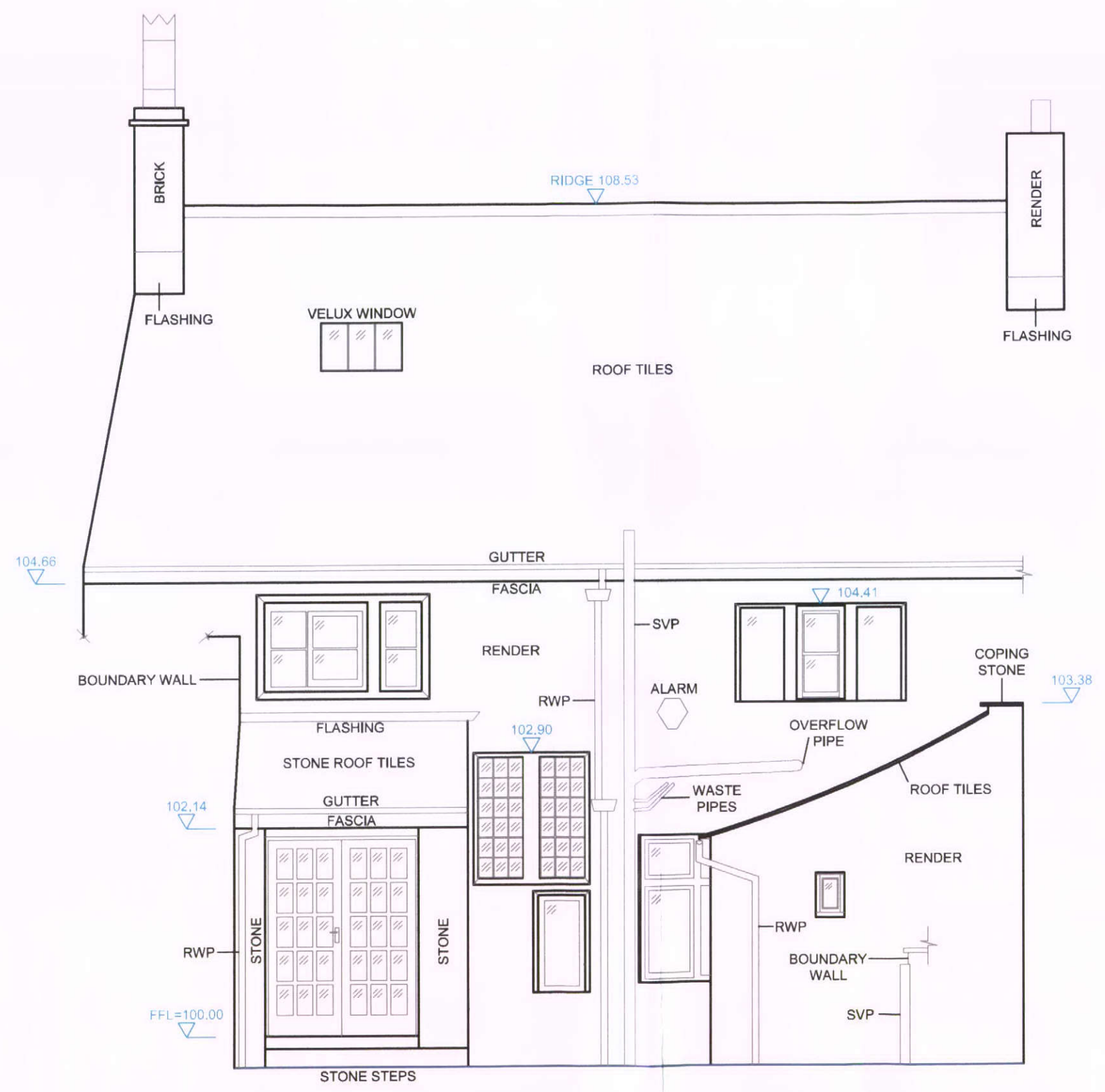


**Disclaimer:**  
 This drawing should only be used for its original purpose. CADS accepts no responsibility for this drawing if supplied to any other party than the original client. Neither is responsibility accepted if the drawing or any part of it is reproduced or transmitted by electronic or other means without the prior written consent of CADS.  
 Whilst every effort has been made to correctly identify species of trees on site, we advise that an arborologist be consulted before any final decisions are made.  
 Drainage information has been visually inspected and measured from the surface, therefore should be treated as approximate only.  
 Please note: all dimensions to be checked on site by contractors prior to commencement of works.

**Legend:**

Level Data	Fence Types
Open Levels - 98.75	GF/1 - Barbed Wire
	GF/2 - Chain Link
	GF/3 - Cast Iron
	GF/4 - Chain Link
	GF/5 - Chain Link
	GF/6 - Iron Rolling
	GF/7 - Panel Fence
	GF/8 - Post & Rail
	GF/9 - Post & Rail
	GF/10 - Post & Rail
	GF/11 - Post & Rail
	GF/12 - Post & Rail
	GF/13 - Post & Rail
	GF/14 - Post & Rail
	GF/15 - Post & Rail
	GF/16 - Post & Rail
	GF/17 - Post & Rail
	GF/18 - Post & Rail
	GF/19 - Post & Rail
	GF/20 - Post & Rail
	GF/21 - Post & Rail
	GF/22 - Post & Rail
	GF/23 - Post & Rail
	GF/24 - Post & Rail
	GF/25 - Post & Rail
	GF/26 - Post & Rail
	GF/27 - Post & Rail
	GF/28 - Post & Rail
	GF/29 - Post & Rail
	GF/30 - Post & Rail
	GF/31 - Post & Rail
	GF/32 - Post & Rail
	GF/33 - Post & Rail
	GF/34 - Post & Rail
	GF/35 - Post & Rail
	GF/36 - Post & Rail
	GF/37 - Post & Rail
	GF/38 - Post & Rail
	GF/39 - Post & Rail
	GF/40 - Post & Rail
	GF/41 - Post & Rail
	GF/42 - Post & Rail
	GF/43 - Post & Rail
	GF/44 - Post & Rail
	GF/45 - Post & Rail
	GF/46 - Post & Rail
	GF/47 - Post & Rail
	GF/48 - Post & Rail
	GF/49 - Post & Rail
	GF/50 - Post & Rail
	GF/51 - Post & Rail
	GF/52 - Post & Rail
	GF/53 - Post & Rail
	GF/54 - Post & Rail
	GF/55 - Post & Rail
	GF/56 - Post & Rail
	GF/57 - Post & Rail
	GF/58 - Post & Rail
	GF/59 - Post & Rail
	GF/60 - Post & Rail
	GF/61 - Post & Rail
	GF/62 - Post & Rail
	GF/63 - Post & Rail
	GF/64 - Post & Rail
	GF/65 - Post & Rail
	GF/66 - Post & Rail
	GF/67 - Post & Rail
	GF/68 - Post & Rail
	GF/69 - Post & Rail
	GF/70 - Post & Rail
	GF/71 - Post & Rail
	GF/72 - Post & Rail
	GF/73 - Post & Rail
	GF/74 - Post & Rail
	GF/75 - Post & Rail
	GF/76 - Post & Rail
	GF/77 - Post & Rail
	GF/78 - Post & Rail
	GF/79 - Post & Rail
	GF/80 - Post & Rail
	GF/81 - Post & Rail
	GF/82 - Post & Rail
	GF/83 - Post & Rail
	GF/84 - Post & Rail
	GF/85 - Post & Rail
	GF/86 - Post & Rail
	GF/87 - Post & Rail
	GF/88 - Post & Rail
	GF/89 - Post & Rail
	GF/90 - Post & Rail
	GF/91 - Post & Rail
	GF/92 - Post & Rail
	GF/93 - Post & Rail
	GF/94 - Post & Rail
	GF/95 - Post & Rail
	GF/96 - Post & Rail
	GF/97 - Post & Rail
	GF/98 - Post & Rail
	GF/99 - Post & Rail
	GF/100 - Post & Rail

1. MAR 2010



Proposed Plan 5 Rear Aspect

REAR ELEVATION

Abbreviations	Fence Types
ACU - Air Conditioner Unit	GF/1 - Barbed Wire
AP - Appliance	GF/2 - Chain Link
BB - Bedstone	GF/3 - Cast Iron
BC - Block	GF/4 - Chain Link
BS - Bush	GF/5 - Chain Link
BU - Bush	GF/6 - Iron Rolling
CV - Cable TV Cover	GF/7 - Panel Fence
CH - Chimney	GF/8 - Post & Rail
CHC - Chimney Height Change	GF/9 - Post & Rail
CL - Chain Link	GF/10 - Post & Rail
CPB - Concrete Paving Slab	GF/11 - Post & Rail
CS - Chimney Stack	GF/12 - Post & Rail
CSH - Chimney Stone	GF/13 - Post & Rail
CSH - Chimney Stone	GF/14 - Post & Rail
CSH - Chimney Stone	GF/15 - Post & Rail
CSH - Chimney Stone	GF/16 - Post & Rail
CSH - Chimney Stone	GF/17 - Post & Rail
CSH - Chimney Stone	GF/18 - Post & Rail
CSH - Chimney Stone	GF/19 - Post & Rail
CSH - Chimney Stone	GF/20 - Post & Rail
CSH - Chimney Stone	GF/21 - Post & Rail
CSH - Chimney Stone	GF/22 - Post & Rail
CSH - Chimney Stone	GF/23 - Post & Rail
CSH - Chimney Stone	GF/24 - Post & Rail
CSH - Chimney Stone	GF/25 - Post & Rail
CSH - Chimney Stone	GF/26 - Post & Rail
CSH - Chimney Stone	GF/27 - Post & Rail
CSH - Chimney Stone	GF/28 - Post & Rail
CSH - Chimney Stone	GF/29 - Post & Rail
CSH - Chimney Stone	GF/30 - Post & Rail
CSH - Chimney Stone	GF/31 - Post & Rail
CSH - Chimney Stone	GF/32 - Post & Rail
CSH - Chimney Stone	GF/33 - Post & Rail
CSH - Chimney Stone	GF/34 - Post & Rail
CSH - Chimney Stone	GF/35 - Post & Rail
CSH - Chimney Stone	GF/36 - Post & Rail
CSH - Chimney Stone	GF/37 - Post & Rail
CSH - Chimney Stone	GF/38 - Post & Rail
CSH - Chimney Stone	GF/39 - Post & Rail
CSH - Chimney Stone	GF/40 - Post & Rail
CSH - Chimney Stone	GF/41 - Post & Rail
CSH - Chimney Stone	GF/42 - Post & Rail
CSH - Chimney Stone	GF/43 - Post & Rail
CSH - Chimney Stone	GF/44 - Post & Rail
CSH - Chimney Stone	GF/45 - Post & Rail
CSH - Chimney Stone	GF/46 - Post & Rail
CSH - Chimney Stone	GF/47 - Post & Rail
CSH - Chimney Stone	GF/48 - Post & Rail
CSH - Chimney Stone	GF/49 - Post & Rail
CSH - Chimney Stone	GF/50 - Post & Rail
CSH - Chimney Stone	GF/51 - Post & Rail
CSH - Chimney Stone	GF/52 - Post & Rail
CSH - Chimney Stone	GF/53 - Post & Rail
CSH - Chimney Stone	GF/54 - Post & Rail
CSH - Chimney Stone	GF/55 - Post & Rail
CSH - Chimney Stone	GF/56 - Post & Rail
CSH - Chimney Stone	GF/57 - Post & Rail
CSH - Chimney Stone	GF/58 - Post & Rail
CSH - Chimney Stone	GF/59 - Post & Rail
CSH - Chimney Stone	GF/60 - Post & Rail
CSH - Chimney Stone	GF/61 - Post & Rail
CSH - Chimney Stone	GF/62 - Post & Rail
CSH - Chimney Stone	GF/63 - Post & Rail
CSH - Chimney Stone	GF/64 - Post & Rail
CSH - Chimney Stone	GF/65 - Post & Rail
CSH - Chimney Stone	GF/66 - Post & Rail
CSH - Chimney Stone	GF/67 - Post & Rail
CSH - Chimney Stone	GF/68 - Post & Rail
CSH - Chimney Stone	GF/69 - Post & Rail
CSH - Chimney Stone	GF/70 - Post & Rail
CSH - Chimney Stone	GF/71 - Post & Rail
CSH - Chimney Stone	GF/72 - Post & Rail
CSH - Chimney Stone	GF/73 - Post & Rail
CSH - Chimney Stone	GF/74 - Post & Rail
CSH - Chimney Stone	GF/75 - Post & Rail
CSH - Chimney Stone	GF/76 - Post & Rail
CSH - Chimney Stone	GF/77 - Post & Rail
CSH - Chimney Stone	GF/78 - Post & Rail
CSH - Chimney Stone	GF/79 - Post & Rail
CSH - Chimney Stone	GF/80 - Post & Rail
CSH - Chimney Stone	GF/81 - Post & Rail
CSH - Chimney Stone	GF/82 - Post & Rail
CSH - Chimney Stone	GF/83 - Post & Rail
CSH - Chimney Stone	GF/84 - Post & Rail
CSH - Chimney Stone	GF/85 - Post & Rail
CSH - Chimney Stone	GF/86 - Post & Rail
CSH - Chimney Stone	GF/87 - Post & Rail
CSH - Chimney Stone	GF/88 - Post & Rail
CSH - Chimney Stone	GF/89 - Post & Rail
CSH - Chimney Stone	GF/90 - Post & Rail
CSH - Chimney Stone	GF/91 - Post & Rail
CSH - Chimney Stone	GF/92 - Post & Rail
CSH - Chimney Stone	GF/93 - Post & Rail
CSH - Chimney Stone	GF/94 - Post & Rail
CSH - Chimney Stone	GF/95 - Post & Rail
CSH - Chimney Stone	GF/96 - Post & Rail
CSH - Chimney Stone	GF/97 - Post & Rail
CSH - Chimney Stone	GF/98 - Post & Rail
CSH - Chimney Stone	GF/99 - Post & Rail
CSH - Chimney Stone	GF/100 - Post & Rail

REV	DETAIL OF AMENDMENT	DRAWN BY	CHECKED BY	DATE



CLIENT: TIM SKERRY  
 SITE ADDRESS: 25 MARKET PLACE, CHAPEL-ENLE-FRITH, HIGH PEAK, SK23 0EN  
 DRAWING TITLE: EXISTING REAR ELEVATION

PROJECT NO.	DRAWING NO.	DRAWN BY
S/7454	S/7454_ELSURVEY	DS

SCALE	CHECKED BY	DATE	REVISION
1:50	AS	MARCH 2009	0

CAD Design Services Ltd  
 Retail Design & Planning  
 Space Planning  
 Measured Building Surveys  
 H & S Surveys  
 Site Surveys  
 CAD Drafting  
 Document Scanning  
 Microstation Training  
 AutoCAD Training