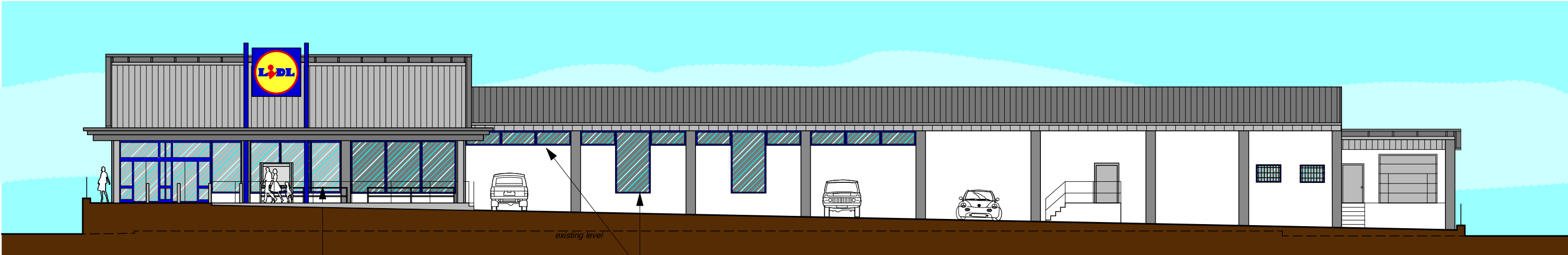


BACK (West)



FRONT (East)

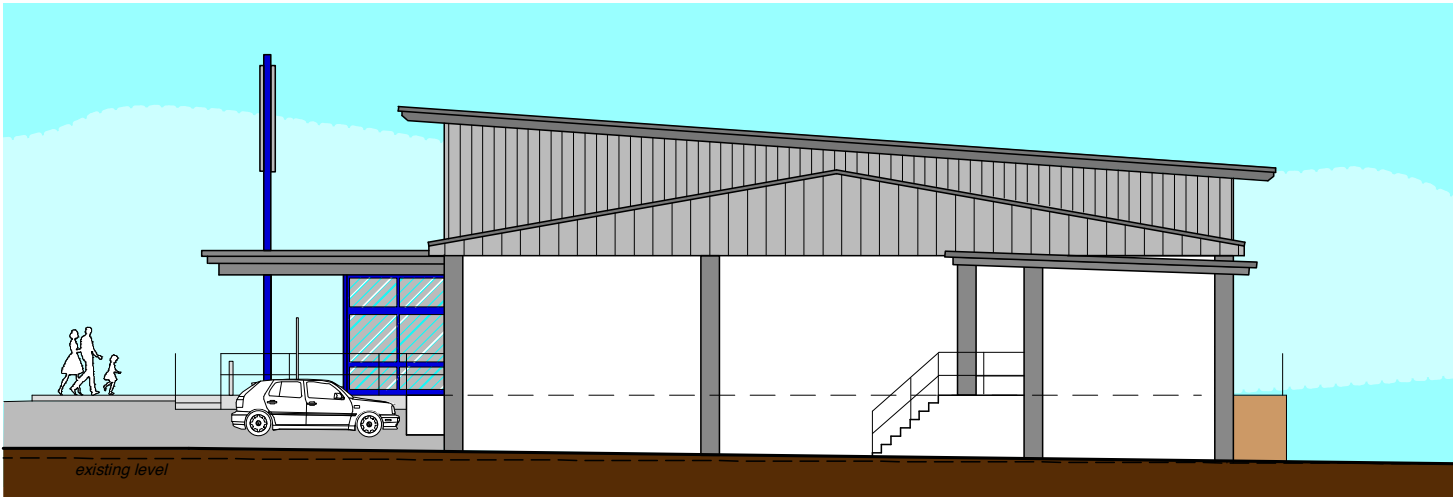
Dark blue colourcoated glazed aluminium frames

Opaque glazed panels



SIDE (south)

Dark blue colourcoated glazed aluminium frames



SIDE (north)

- Roof** 4 degree pitch to mono-pitch roof and 10 degree pitch to dual pitched roof. Both prof led steel roof sheeting, merlin grey HPS200 coated, gutters/fascias, downpipes to match. All with weathered zinc fascias, gutters, downpipes.
- Gables** Sheet zinc with standing seams @ 500c/s
- Walls** White painted render with grey rendered piers and plinth to front and side elevations. Light stone coloured render with dark stone rendered piers to rear elevation.
- Windows + doors** Dark blue colourcoated glazed aluminium frames
Steel doors, pillars and frames painted grey
Selected windows opaque glazed panels

Drawing L(90) 204 is an amendment to drawing L(90) 108

Proposed Lidl supermarket, Glossop

Lidl UK GmbH

PROPOSED ELEVATIONS

1:200

March 09

0808 L(90) 204

BOWEN DANN KNOX Architects

colwyn bay 01492 533136
fax 01492 530881