

OUTLINE PLANTING SPECIFICATION

PROPOSED EXTRA HEAVY STANDARD TREES IN ISLAND BEDS IN CAR PARK

To be planted in island beds within car park, using various components in Greenleaf Arborsystem Tree Package GR11, adapted as follows:- 1200mm x 1200mm Steel 'Avon' Tree grille with Precinct irrigation aperture by Greenleaf arbour system - in shot blasted & galvanised finish, including Tree grille 'heavy duty' support frame set in concrete. Trees protected with Vertical steel galvanised tree guard bolted directly to grille- Green leaf 'Coniston' in galvanised finish. N.B. Support frame, and grille to be supplied customised as necessary to support the grille at an angle and the tree guard vertically. Root director RD1050 modular root management system by Greenleaf to be installed. 192 no 250 x 250 x 90 Rootcells by Greenleaf in triple layer, loaded with premium quality topsoil - to be located beneath the tree pit/car park sub base, below & around root director. Root rain Precinct grille version irrigation pipe to be installed around rootball of tree with grille aperture which locks into tree grille Type 1/GV. Trees to be underground guyed in accordance with BS4083 latest version - using Greenleaf underground guying system with Gripple tensioners, 7 strand / 4mm galvanised guying wire, gripple tensioner tool, and 'deadman anchors'. All to be in accordance with principles in Greenleaf Arborsystem GR11 and installed in accordance with their specification. N.B. Relies on root cells, tree & components being installed prior to installation of car park block paving around each tree area, and tree surround and car park block paving edge restraint finished flush with car park paving level. Planting medium to tree pits to comprise 80% approved Premium quality loamy, free draining topsoil to complying BS 3882 'Premium Grade' & 20% peat free compost. Enmag fertilizer incorporated at 70 grams/m2. Trees to be watered in well.

EXISTING TREES TO BE RETAINED & PROTECTED

All existing trees shall be protected using guidance from BS 5837 2005 : Guide for trees in relation to construction. Protective fences should be erected prior to delivery of any ground works equipment and machinery, and any site preparation activities. All materials for construction purposes should be stored outside of the tree protection areas and outside of the canopy zone of trees. All toxic materials such as oils, bitumens & residues from concrete mixing should be kept well away from the protection zone of the trees, well away from their root systems, & should be retained within effective catchment areas as far away as possible to avoid risk of tree root contamination. The routing of services within the tree protection zones or beneath their canopy line should be avoided as far as possible. Any excavation that should prove necessary within the tree protection zones to be carried out by careful hand dig to avoid root damage. Trees to be checked over by an LPA approved arboriculturist/tree surgeon & any dead wood overhanging development to be removed in liaison with LPA Tree Officer.

ORNAMENTAL SHRUBS AND GROUNDCOVERS

All proposed shrub areas are to receive 400 mm depth approved quality topsoil beds, to comply to BS 3882 'General Purpose Grade', made weed free, and cultivated, incorporating Enmag fertilizer at a rate of 70 g/m2. Specimen plants to have backfill of 80% topsoil /20% approved peat free compost. All plants to be well watered in. Allow for a weed suppressant geotextile membrane over whole of shrub beds, with all joints overlapped by 200mm, and holes cut for planting through. Bark mulch to whole of finished shrub beds to be 75mm layer of approved quality coarse/medium grade bark mulch. All plant material to be supplied in accordance with BS 3936 Parts 1-4 and 9-10. All plants to the correct species and stock size specified, and to be good specimens characteristic of species. All plants to be supplied free from pest & disease. All tree, shrub, & groundcover species have been specifically selected for their form, height, & individual characteristics, therefore no substitution of species - without prior consent.

VISIBILITY SPLAYS

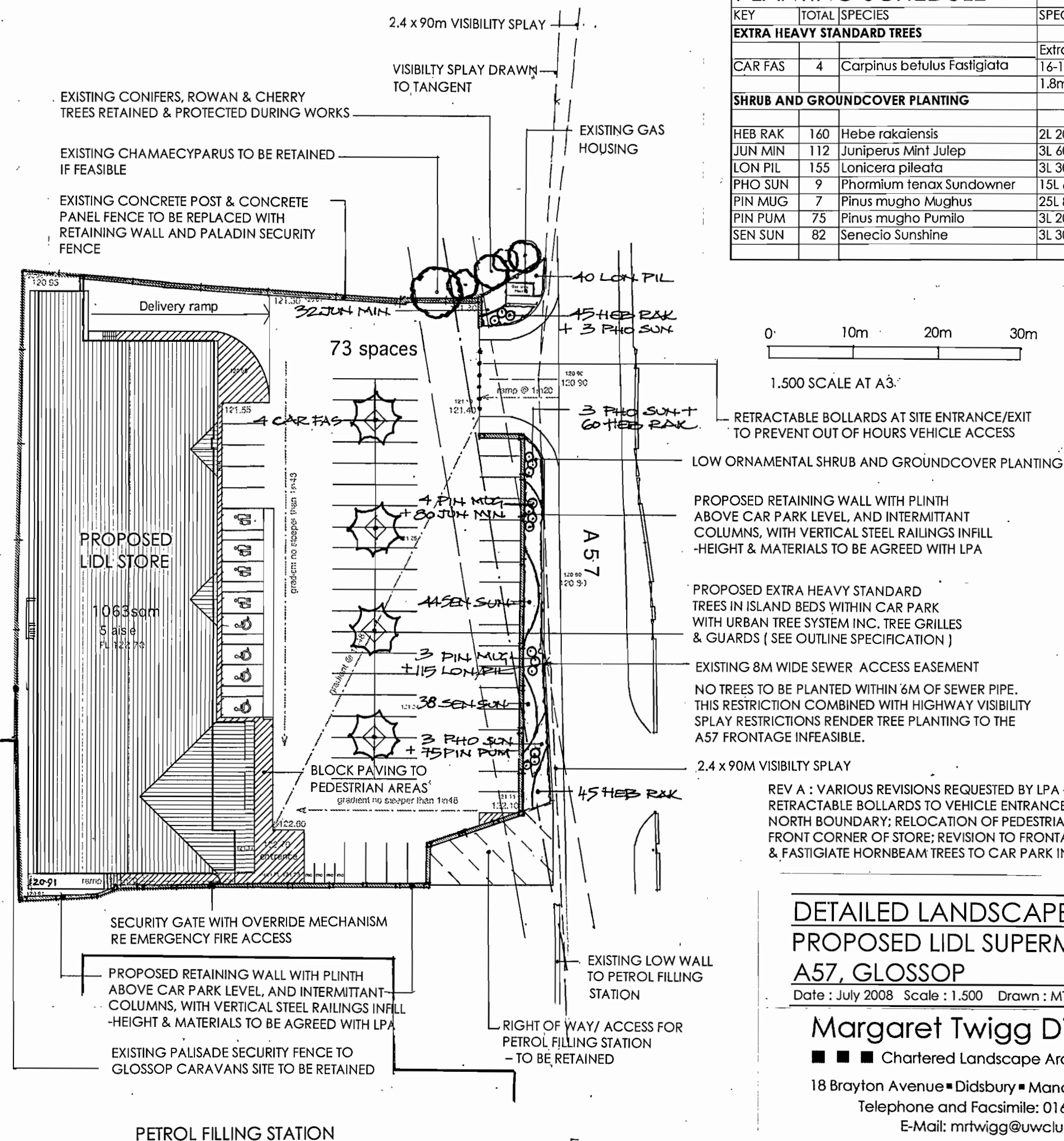
Within visibility splays only groundcover species, low shrubs & dwarf specimens to a maximum height of 600mm - as specified on drawing.

SERVICES

The landscape contractor should establish positions of all drains & services on site prior to excavation works, & any conflict with tree planting positions should be brought to attention, & realigned positions agreed, or root barriers used - to be agreed on site prior to planting.

OUTLINE MAINTENANCE SPECIFICATION

All soft landscape elements are to be maintained and guaranteed during 12 months defects liability period. Operations to include weeding operations to trees, & shrub beds, pruning as necessary - including plants in visibility splays, checking & adjusting stakes & ties & adjusting tensioning wires to underground guys, checking existing trees, watering new trees & shrubs as necessary during prolonged dry periods, replacing any plant failures, & topping up bark mulch.



PLANTING SCHEDULE

KEY	TOTAL	SPECIES	SPECIFICATION	NO/M2
EXTRA HEAVY STANDARD TREES				
			Extra Heavy Standard	
CAR FAS	4	Carpinus betulus Fastigiata	16-18cm girth, 4.50-6.0m ht	
			1.8m clear stem, Rootballed	
SHRUB AND GROUNDCOVER PLANTING				
HEB RAK	160	Hebe rakaiensis	2L 20-30cm	4/m2
JUN MIN	112	Juniperus Mint Julep	3L 60-80cm	5/m2
LON PIL	155	Lonicera pileata	3L 30-40cm	5/m2
PHO SUN	9	Phormium tenax Sundowner	15L 60-80cm	
PIN MUG	7	Pinus mugho Mughus	25L 80-100cm	
PIN PUM	75	Pinus mugho Pumilo	3L 20-30cm	5/m2
SEN SUN	82	Senecio Sunshine	3L 30-40cm	4/m2

DETAILED LANDSCAPE PROPOSALS

PROPOSED LIDL SUPERMARKET, A57, GLOSSOP

Date : July 2008 Scale : 1:500 Drawn : MT Drawing No. 281.01A

Margaret Twigg Dip LA MLI

Chartered Landscape Architect

18 Brayton Avenue ■ Didsbury ■ Manchester ■ M20 5LP

Telephone and Facsimile: 0161 445 8369

E-Mail: mrtwigg@uwclub.net