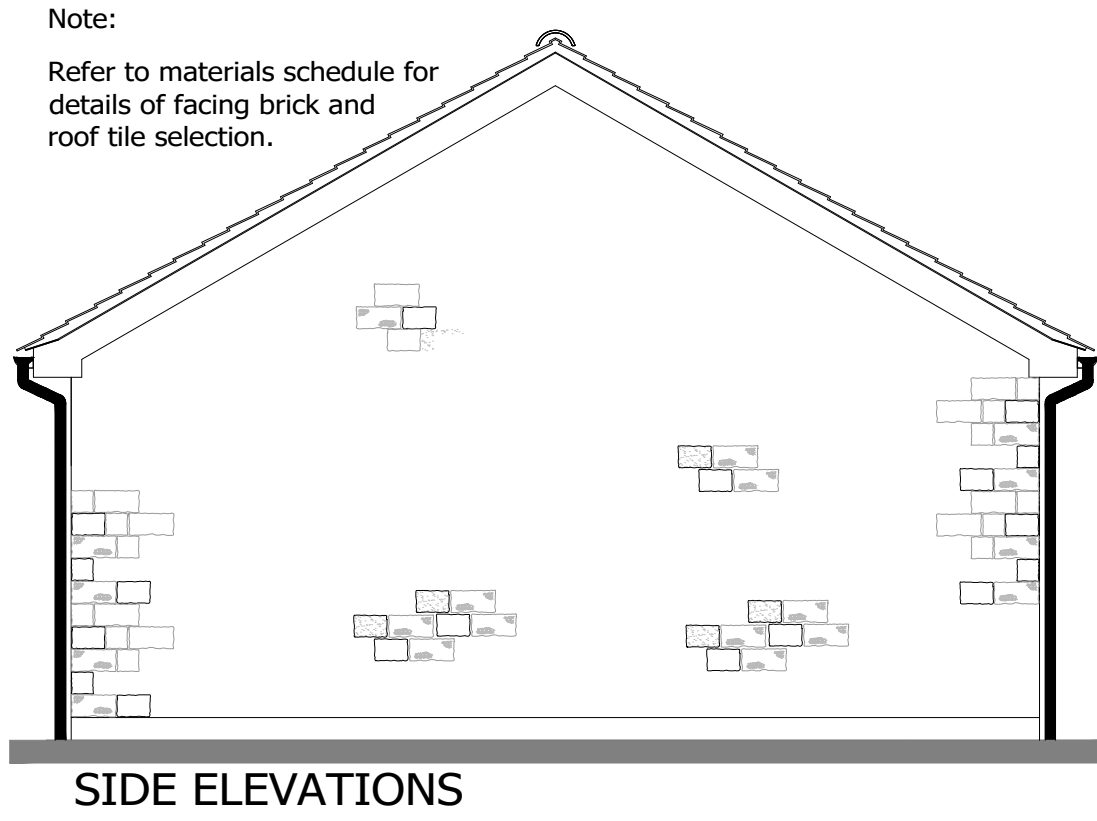
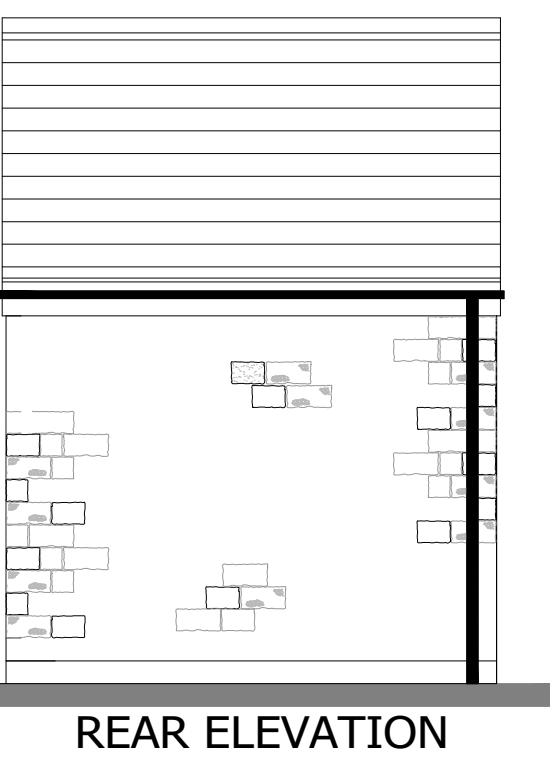
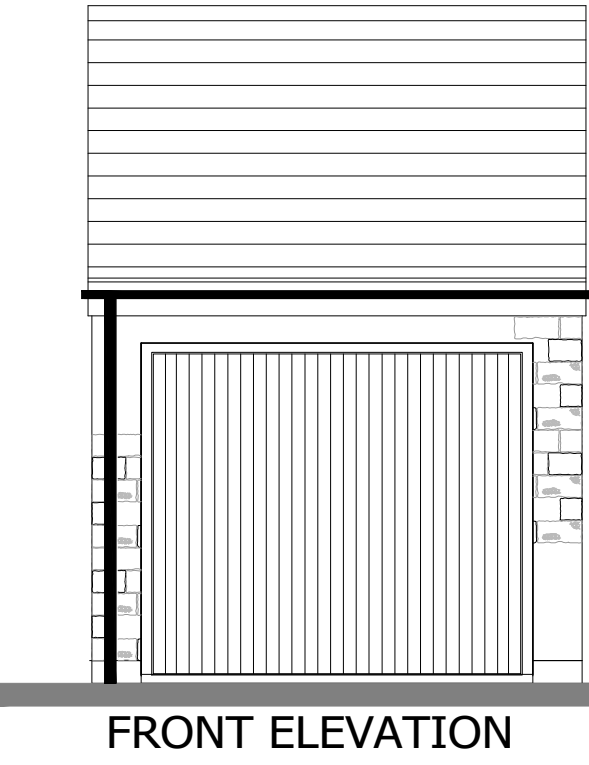
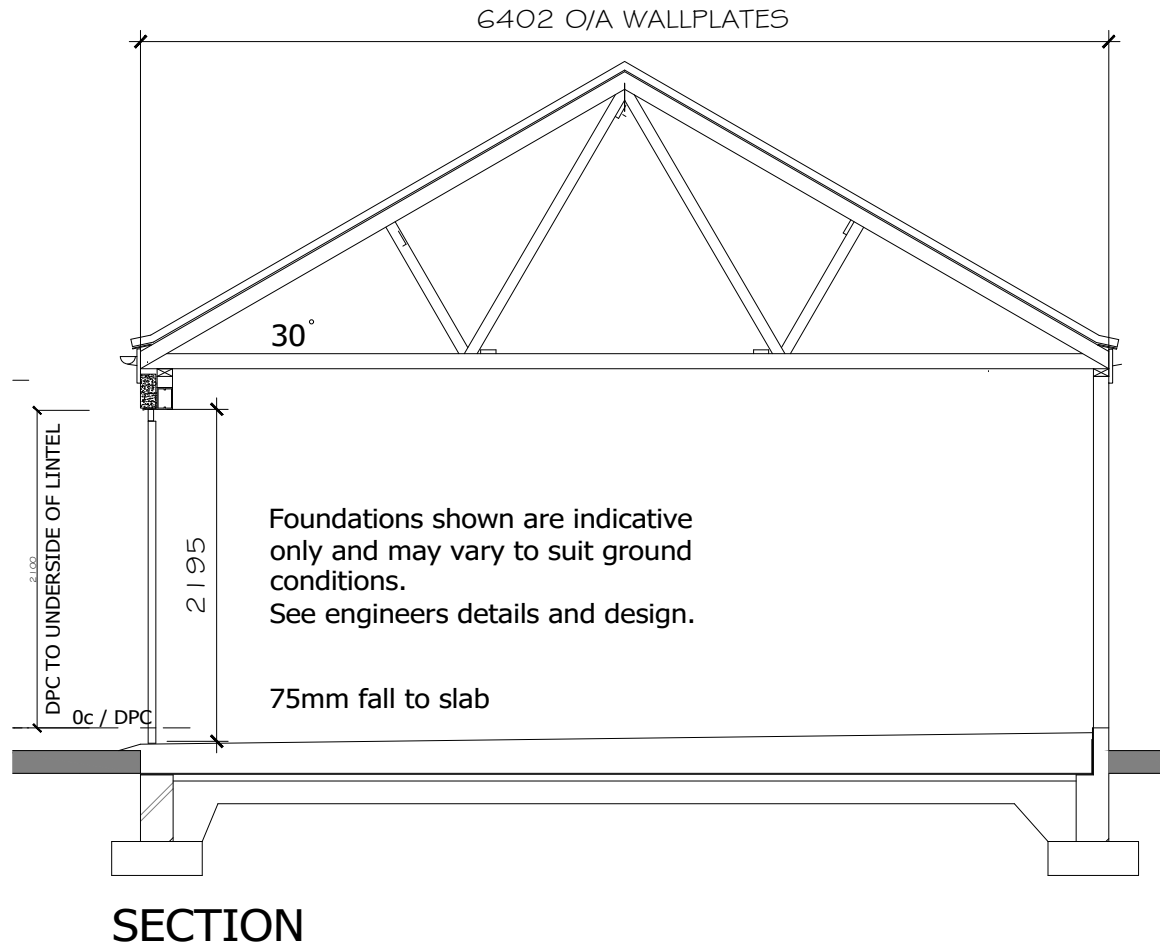


100 x 50mm sw wall plate spiked to blockwork and held down with galvanised M.S. straps at max 2.00m centres

LB.C Longitudinal Bracing at Ceiling level
 LB.R Longitudinal Bracing at Rafter level
 LB.Ri Longitudinal Bracing at Ridge
 DB Diagonal Bracing
 DCB Diagonal Ceiling Bracing

Prefabricated trussed rafters designed manufactured and installed in accordance with BS 5268 : Part 3 : 1985. All roof bracing details to BS 5268 or to NHBC requirements.

- R 30 x 5 Galv. M.S. strap at rafter level
- C 30 x 5 Galv. M.S. strap at ceiling level



Note:
 Refer to materials schedule for details of facing brick and roof tile selection.

Rev	Date	Comment
A	01/08/23	Stone detailing added and eaves amended



WAINHOMES GROUP LTD.
 This drawing and building work depicted are the copyright of Wainhomes Group Ltd. and may not be reproduced or amended except by written permission. No liability will be accepted for amendments made by other persons.
 Only written dimensions to be worked from. All dimensions to be checked on site and any discrepancies to be reported to the design team prior to commencement.

LARGE SINGLE GARAGE

Side to Side Ridge WORKING DRAWINGS (STONE)

Scale - 1:50 @A3	08/02/11
Drawing No - LSG/CE/1.4/S	Rev A