

Existing Access Road to be resurfaced to junction with Macclesfield Road

PREPARATION

- Soil to be graded to smooth, flowing contours to tie into existing levels.
- Areas within the canopy of existing trees to be re-graded to original levels. These should be worked by hand.
- Soils shall only be worked when the ground conditions are reasonably dry.
- Immediately before spreading and regrading topsoil, all stones larger than 75mm in anyone direction shall be removed off site. Likewise, all arisings, contaminants and debris to be removed off site.

TOPSOILING

- Any imported topsoil shall be free of fragments of roots, aggressive weeds, sticks, straw, subsoil, pieces of bark, concrete, glass, wire, lumps of clay or vegetation, and the like.
- Topsoil (imported or existing) shall be to a depth of 350mm for all areas to be planted, and 150mm for grassed areas.
- Once spread, topsoil to be gently firmed but not compacted.
- Finished levels shall marry into adjoining areas.
- All stones and clods of earth greater than 50mm in anyone direction shall be removed off site.

PIT PREPARATION FOR NATIVE TREE & SHRUB PLANTED AREAS

- Prior to planting a 1.0m weed free circle will be sprayed off to remove vegetation from areas to be planted.
- Tree pits to be 600x600x500mm
Semi-native shrub pits to be 300x300x300mm
Hedgerow trenches 400mm wide x 300mm deep

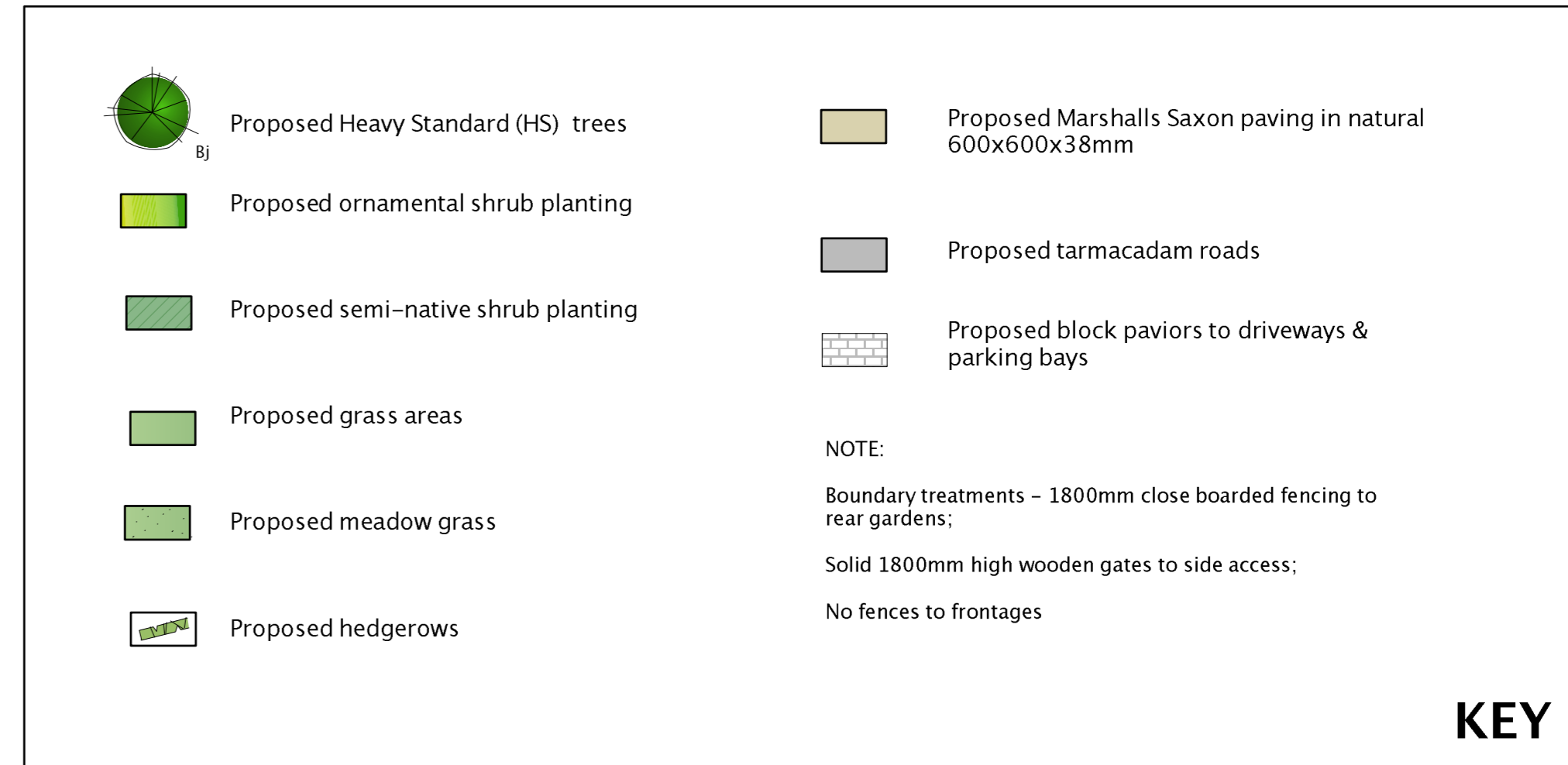
TREE PLANTING

- All tree planting, necessary amelioration for stock and maintenance to be in general compliance with BS5428:2014 'Trees: from nursery to independence in the landscape'.
- All trees are to be staked and secured as follows:
 - Heavy standard (HS) trees are to be double staked to 750mm above ground and secured using a single rubber tie and spacer
- One number 80 litre bag of tree planting compost (non peat based) is to be incorporated into the tree pits. Compost must be thoroughly mixed with excavated (or imported) topsoil.
- Trees planted in grass are to have a 1m diameter clear zone to the base and are to be mulched to a depth of 50mm with approved medium grade tree bark.

PLANTING - ORNAMENTAL SHRUBS & NATIVE TREE PLANTING AREAS

- Plant handling at the nursery, and during transit up to delivery, shall be in accordance with 'Plant Handling' the booklet published by the Committee for Plant Supply and Establishment (C-PSE). The contractor shall comply with clauses 3 & 4 of the above booklet (obtained from the Horticulture Trades Association) which refers to the receipt, unloading and temporary storage of plants.
- Plants shall be first class examples of their species or variety, free from all pests and diseases with good fibrous root systems and materially undamaged. (Refer to relevant sections of BS3936 Parts 1-4 'Specification of Nursery Stock')
- All planting is to be in general compliance with BS4248:1989 'Code of Practice for general landscape operations (excluding hard surfaces)'
- The contractor must ascertain for himself the exact location of any under-ground services and maintenance points.
- Water as necessary to ensure the establishment and continued thriving of planted and grassed matter.
- Carry out all work when soil and weather conditions are suitable:
 - Do not plant during periods of frost or strong winds.
 - Plant only during the following periods: -
 - Bare root deciduous trees and shrubs: Late October to late March
 - Container grown plants: At any time if ground water and weather conditions are favourable.
- Ensure that adequate watering and weed control is available following planting.
- HS trees and hedgerow transplants to have spiral rabbit guards fitted immediately upon planting.

PLANTING NOTES



Single Storey Garage / Study buildings in front of existing house and Plot 7 to incorporate terrace area with glass balustrades over

SUGGESTED ORNAMENTAL SHRUB SPECIES

Species	Size (cm)	Type	Density
Aucuba japonica 'Crotonifolia'	45-60 cm	SL	1.25 per m ²
Berberis julianae	45-60 cm	3L	1.25 per m ²
Chaenomeles 'Crimson and Gold'	45-60 cm	5L	2 per m ²
Choisya 'Aztec Pearl'	45-60 cm	3L	2 per m ²
Cistus x corbanensis	45-60 cm	3L	3 per m ²
Cordylone australis 'Sundance'	45-60 cm	10L	Specimen
Cotinus 'Flame'	45-60 cm	5L	1.25 per m ²
Cotoneaster 'Skogholm Coral Beauty'	30-40 cm	2L	5 per m ²
Cytisus x kewensis	45-60 cm	2L	4 per m ²
Eleaagnus pungens 'Macculata'	45-60 cm	5L	1.25 per m ²
Escallonia iveyii	45-60 cm	5L	2 per m ²
Euonymus 'Silver Queen'	30-40 cm	2L	5 per m ²
Fuchsia 'Mrs Popple'	45-60 cm	3L	2 per m ²
Garrya elliptica	60-90 cm	3L	1.25 per m ²
Genista Lydia	45-60 cm	2L	3 per m ²
Hebe 'Marjorie'	45-60 cm	3L	3 per m ²
Heuchera 'Place Purple'	30-40 cm	2L	5 per m ²
Lavandula stoechas	30-40 cm	2L	4 per m ²
Lonicera nitida 'Maigreen'	30-40 cm	3L	3 per m ²
Mahonia x media 'Charity'	30-40 cm	3L	2 per m ²
Pieris 'Forest Flame'	45-60 cm	3L	2 per m ²
Phormium tenax 'Yellow Wave'	45-60 cm	10L	Specimen
Potentilla 'Princess'	30-40 cm	3L	2 per m ²
Prunus 'Zabelliana'	45-60 cm	3L	2 per m ²
Skimmia 'Rubella'	45-60 cm	3L	2 per m ²
Spiraea japonica 'Snow mound'	45-60 cm	3L	2 per m ²
Spiraea 'Firelight'	45-60 cm	3L	2 per m ²

TREE PLANTING

Species	Size	Type	No.
Betula pendula (Bp)	10-12cm girth	Rootballed	9
Crataegus laevigata 'Crimson Cloud' (Cl)	10-12cm girth	Rootballed	4
Malus tchonoskii (Mt)	10-12cm girth	Rootballed	4
Prunus avium 'Plena' (Pa)	10-12cm girth	Rootballed	3
Sorbus aucuparia 'Sheerwater Seedling' (Sa)	10-12cm girth	Rootballed	3
TOTAL			23

HEDGEROWS

H1 - 103 lin m

5 per lin m - double staggered row

Species	Size	Type	No.
Acet campestre	45-60cm	bare root	78
Crataegus mongyna	45-60cm	bare root	281
Corulus avellana	45-60cm	bare root	78
Prunus spinosa	45-60cm	bare root	78
TOTAL			515

H2 - 18 lin m

5 per lin m - double staggered row

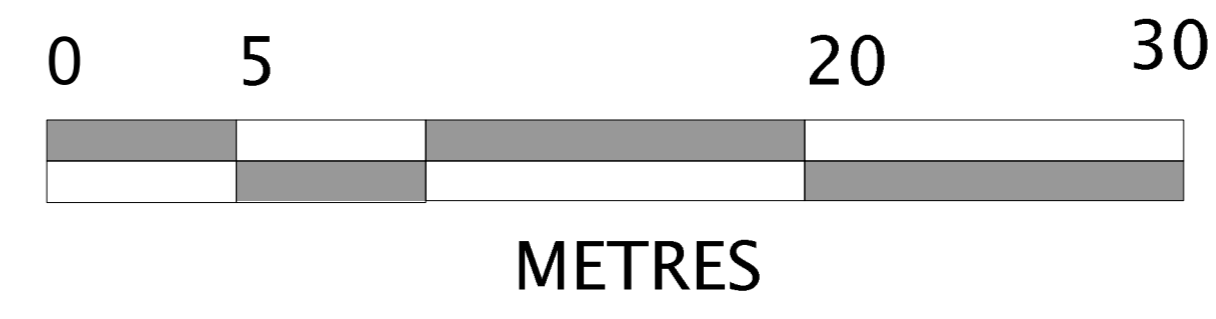
Species	Size	Type	No.
Fagus sylvatica	45-60cm	bare root	315

Age	Species	Size	Type	No.	No.	No.
10	Ametanchier lamarkii	40-60cm	3L	3	12	15
10	Cornus stolonifera	40-60cm	bare root	3	12	15
15	Crataegus monogyna	40-60cm	bare root	9	15	24
10	Cytisus praecox	40-60cm	2L	3	12	15
10	Euonymus europaeus	40-60cm	2L	3	12	15
20	Hedera helix 'Clacier'	40-60cm	1L	20	35	55
15	Rosa canina	40-60cm	bare root	9	12	21
5	Prunus spinosa	40-60cm	bare root	3	12	15
5	Ulex europaeus	40-60cm	2L	3	12	15
Total				56	134	190

* to front of bed at 3 per m²

Species	Size	Type	No.	No.		
15	Cornus stolonifera	60-90cm	bare root	3	6	9
15	Cornus alba 'Elegantissima'	60-90cm	bare root	3	6	9
5	Cornus canadensis	20-30cm	bare root	1	3	4
5	Cytisus praecox	20-30cm	bare root	1	3	4
10	Hedera helix 'Clacier'	20-30cm	1L	3	6	9
10	Euonymus europaeus	40-60cm	2L	3	3	6
5	Hamamelis mollis	40-60cm	bare root	1	3	4
10	Prunus spinosa	20-30cm	bare root	3	6	9
15	Rosa pimpinellifolia	40-60cm	bare root	3	6	9
10	Viburnum opulus	40-60cm	bare root	2	3	5
Total			23	45	68	

PLANTING SCHEDULES



Taxal Edge, Whaley Bridge

Proposed Residential Development
Landscape Works

General Arrangement Plan **DRAFT**

PR/20/GC04/GA/01

Contractors are advised to check dimensions with the architect before setting out on site

Mr G Cullen

Vanessa Swift Bsc Dip LA CMLI
Landscape Architect
M: 07918 081407
F: 08717 145212
E: vanessa@theplantroom.co.uk
www.theplantroom.co.uk

The plant room

MAY 2020

1:200 @ A0
1:400 @ A2