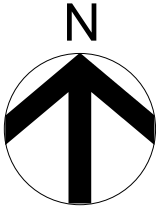
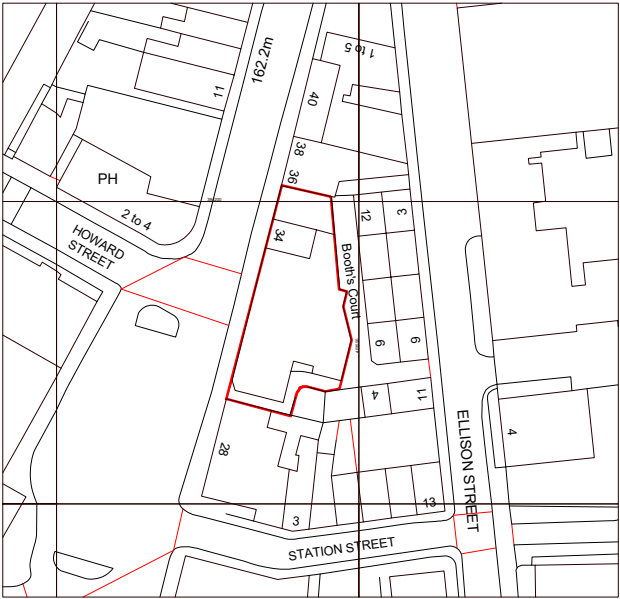


Drawing Information:
All levels and dimensions must be checked onsite by the contractor prior to commencement of works. Any variations must be reported to Millson Associates Ltd. All information hereon in is the copyright of Millson Associates Ltd. Copying in full or part is forbidden without written permission from Millson Associates Ltd.



OS
1 : 1250

Drawing: OS Map		Drawing Number: 2317 - 0013		
Client: Punch Taverns - Mike Fazal		Drawn: Author	Scale: 1 : 1250	Date: 07/05/18
		Approved: Checker	Size: A4	Rev: <div>A</div>
		Status: Survey		

A	North Arrow Added	JP	24.07.18
Rev	Revision History	By	Date



Byron House
10-12 Kennedy St
Manchester M2 4BY
0161 228 0558
www.millsonassociates.co.uk
info@millsonassociates.co.uk

2317 - The George