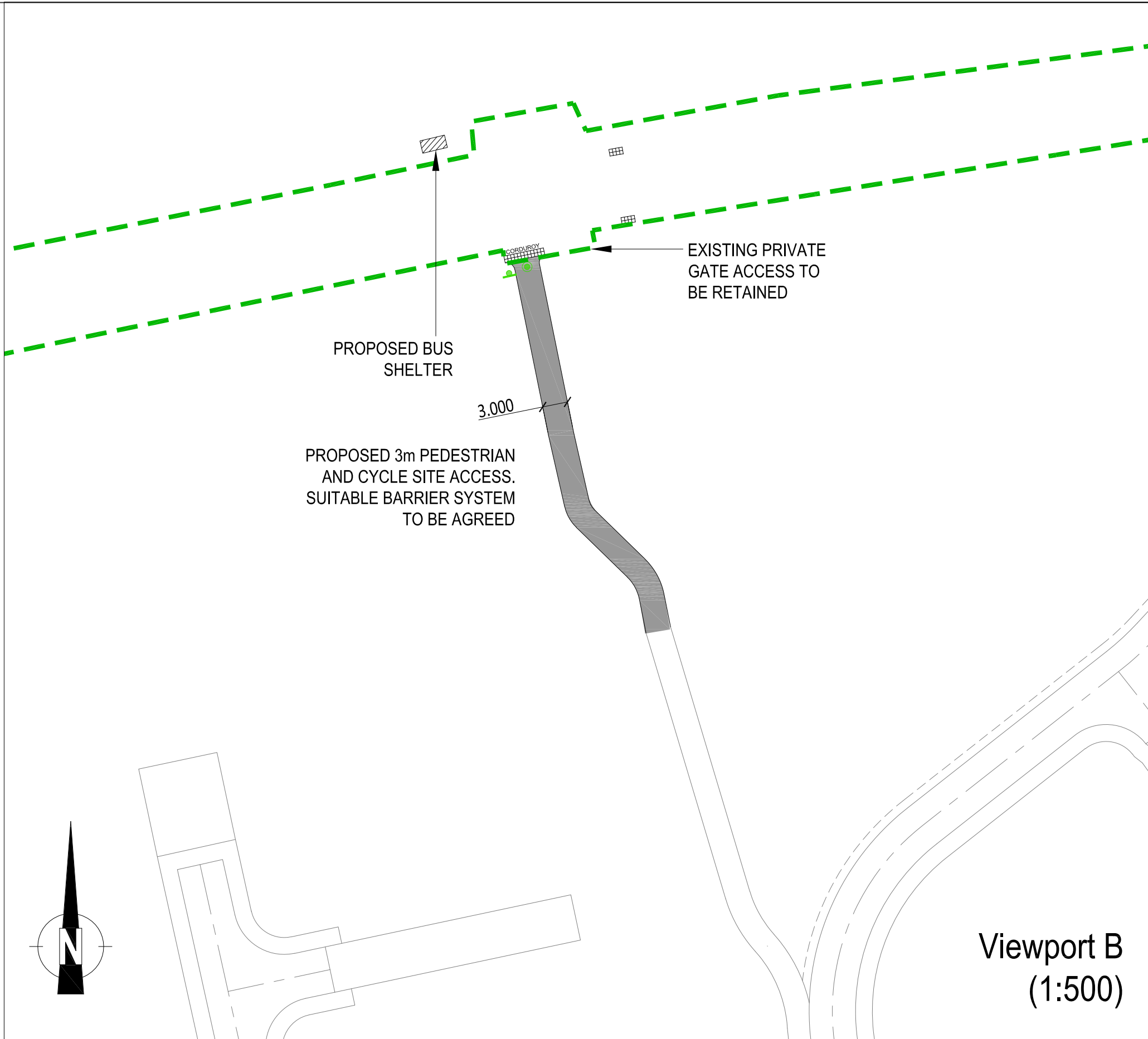
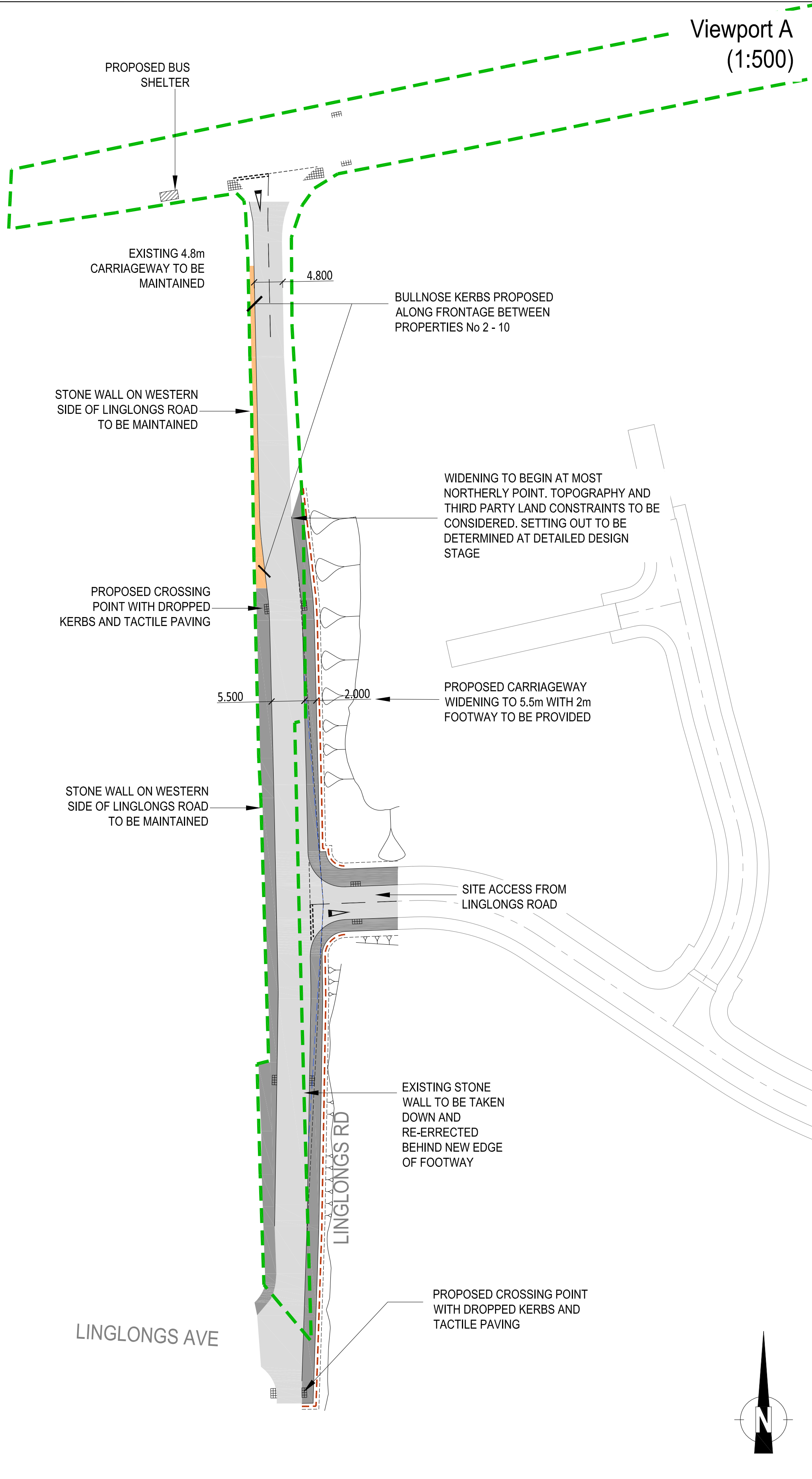
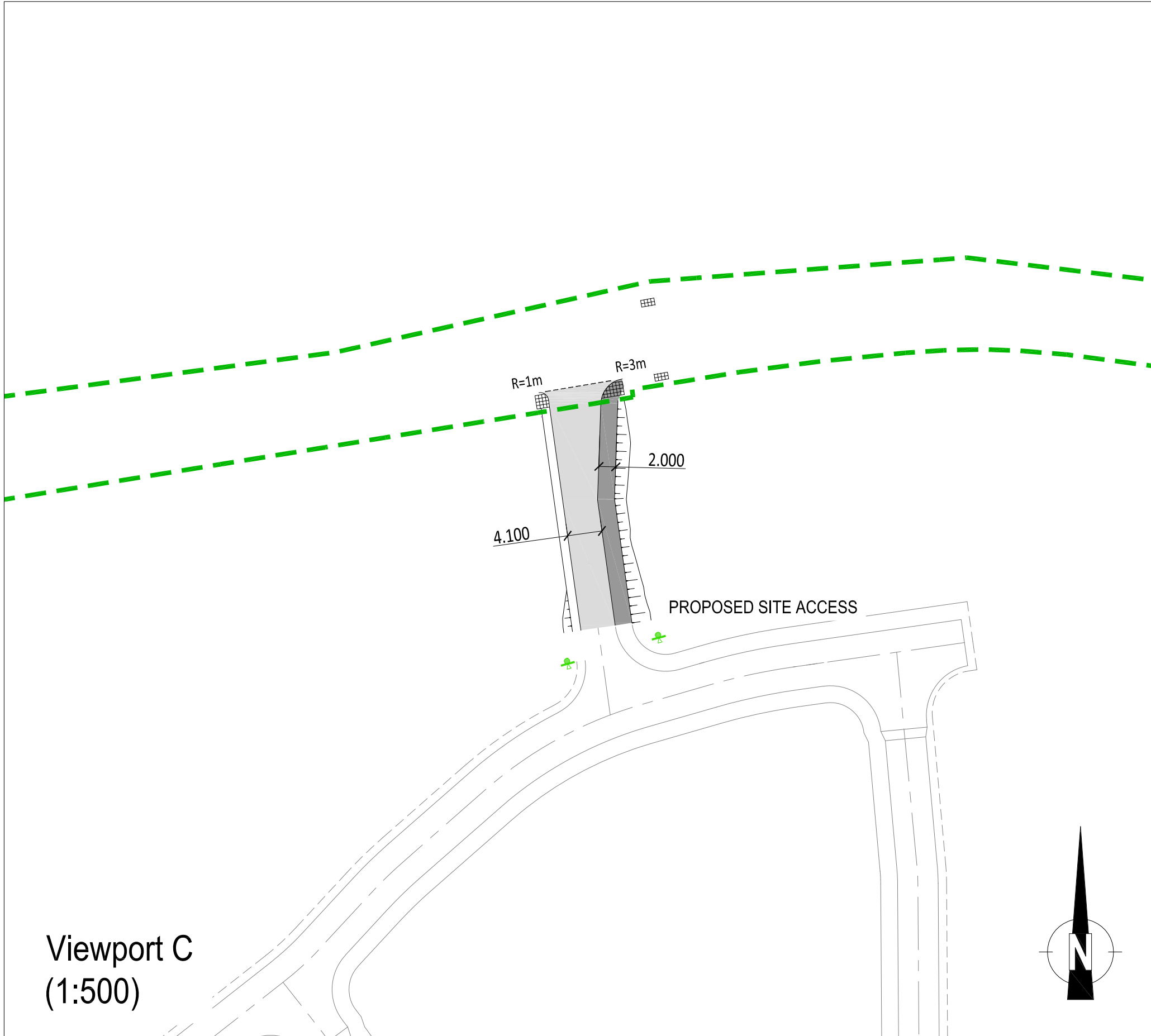


Location Plan
(NTS)



Viewport A
(1:500)



Viewport B
(1:500)

NOT APPROVED

This drawing is subject to change following 'technical approval' process with Derbyshire County Council (DCC). No works can commence on the public highway prior to a Section 278 agreement being signed by DCC.

NOTE: THE PROPERTY OF THIS DRAWING AND DESIGN IS VESTED IN VECTOS (NORTH) LTD. IT MUST NOT BE COPIED OR REPRODUCED IN ANY WAY WITHOUT THEIR PRIOR WRITTEN CONSENT.

REV.	DETAILS	DRAWN	CHECKED	DATE	REV.	DETAILS	DRAWN	CHECKED	DATE
-	ISSUE FOR INFORMATION	TF	SR	29.03.17					
A	INTERNAL SITE LAYOUT ADDED	TF	SR	12.05.17					
B	AMENDMENTS MADE FOLLOWING REALIGNMENT	TF	SR	19.05.17					
C	AMENDMENTS MADE FOLLOWING COMMENTS	TF	SR	26.07.17					
D	AMENDMENTS MADE FOLLOWING COMMENTS FROM DCC	TF	SR	05.10.17					
E	LAYOUT UPDATED FOLLOWING BARRATT HOMES' COMMENTS	TF	SR	13.10.17					
F	INTERNAL ROAD LAYOUT UPDATED	TF	SR	18.12.17					
G	DRAWING UPDATED FOLLOWING COMMENTS FROM DCC	TF	SR	16.04.18					

Notes:

- THIS DRAWING IS TO BE READ IN CONJUNCTION WITH ALL OTHER RELEVANT DRAWINGS AND DOCUMENTS ASSOCIATED WITH VECTOS SERIES VD17501.
- THE HIGHWAY AUTHORITY IS DERBYSHIRE COUNTY COUNCIL (DCC).
- ALL CONSTRUCTION DETAILS TO BE IN ACCORDANCE WITH DCC CONSTRUCTION SPECIFICATION AND APPENDICES (STANDARD DETAILS).
- ALL HIGHWAY WORKS TO BE TO ADOPTABLE STANDARDS AND SHALL COMPLY FULLY WITH DERBYSHIRE COUNTY COUNCIL SPECIFICATION AND WHERE NECESSARY THE RELEVANT SECTIONS OF THE DESIGN MANUAL FOR ROADS AND BRIDGES, SPECIFICATION AND BRITISH STANDARDS.
- ALL STATUTORY CONSENTS, OPENING NOTICES ETC. AS REQUIRED UNDER HIGHWAYS ACTS AND WATER INDUSTRIES ACTS, ARE TO BE OBTAINED BY THE CONTRACTOR PRIOR TO COMMENCEMENT OF THE WORKS (UNLESS OTHERWISE STATED). ALL WORKS ARE TO BE INSPECTED BY L.A., NHBC OR STATUTORY AUTHORITY AS APPLICABLE.

Key:

FOOTWAY / CYCLEWAY

CARRIAGEWAY

OVER RUN AREA

2.4m x 40m VISIBILITY SPLAY


2.4m x 56m VISIBILITY SPLAY

PROPOSED SIGNAGE
REFER TO DRAWING SERIES
VD17501-1200 FOR DETAILS

EXTENT OF EXISTING
HIGHWAY BOUNDARY

PROPOSED WALL

PROPOSED BUS
SHELTER
1.488x3.030m
2 BAY CANTILEVER
SHELTER, NO ENDS,
REFER TO DRAWING
NUMBER 224800.
BSL (BUS SHELTERS
LTD.)
0144 679 5444
www.shelters.co.uk

PROJECT: Linglongs Road, Whaley Bridge				CLIENT: Barratt Homes	
DRAWING TITLE: S278 Site Access Works General Arrangement				 Oxford Place, 61 Oxford Street, Manchester M1 6EQ t: 0161 228 1008 e: enquiries@vectos.co.uk	
DRAWN: TF	CHECKED: SR	DATE: MAY 2017	SCALES: As Shown at A1	DRAWING NUMBER: VD17501-100-01	REVISION: G