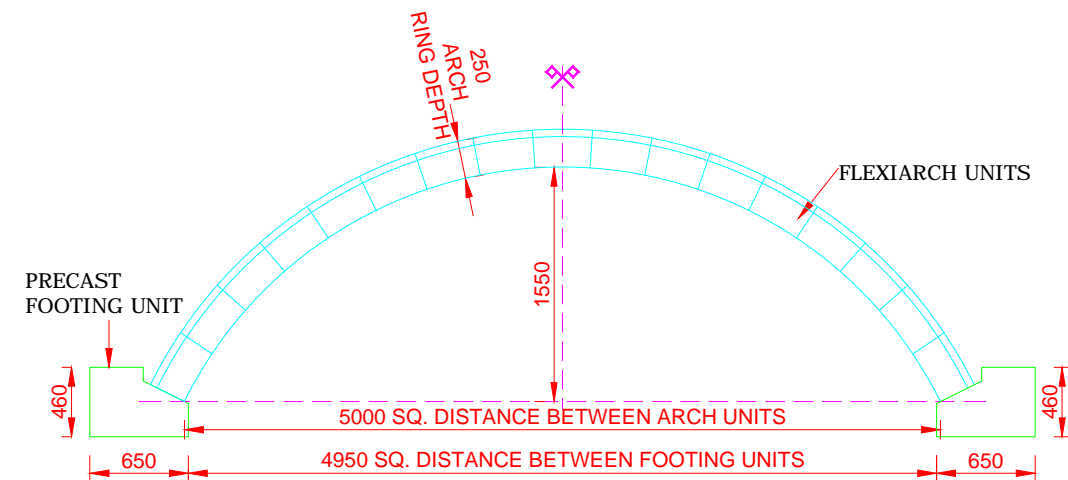
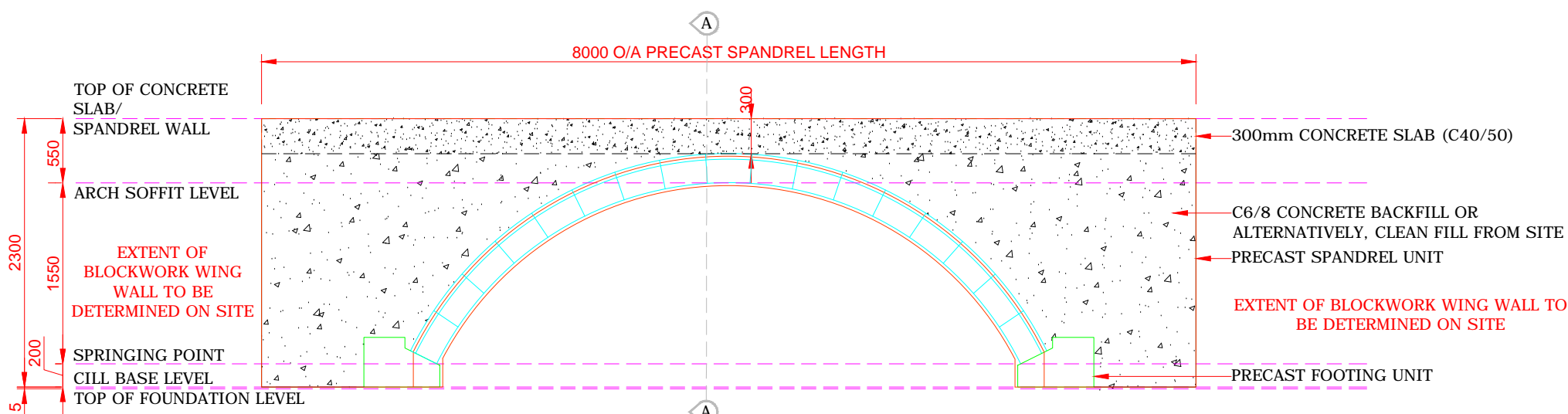


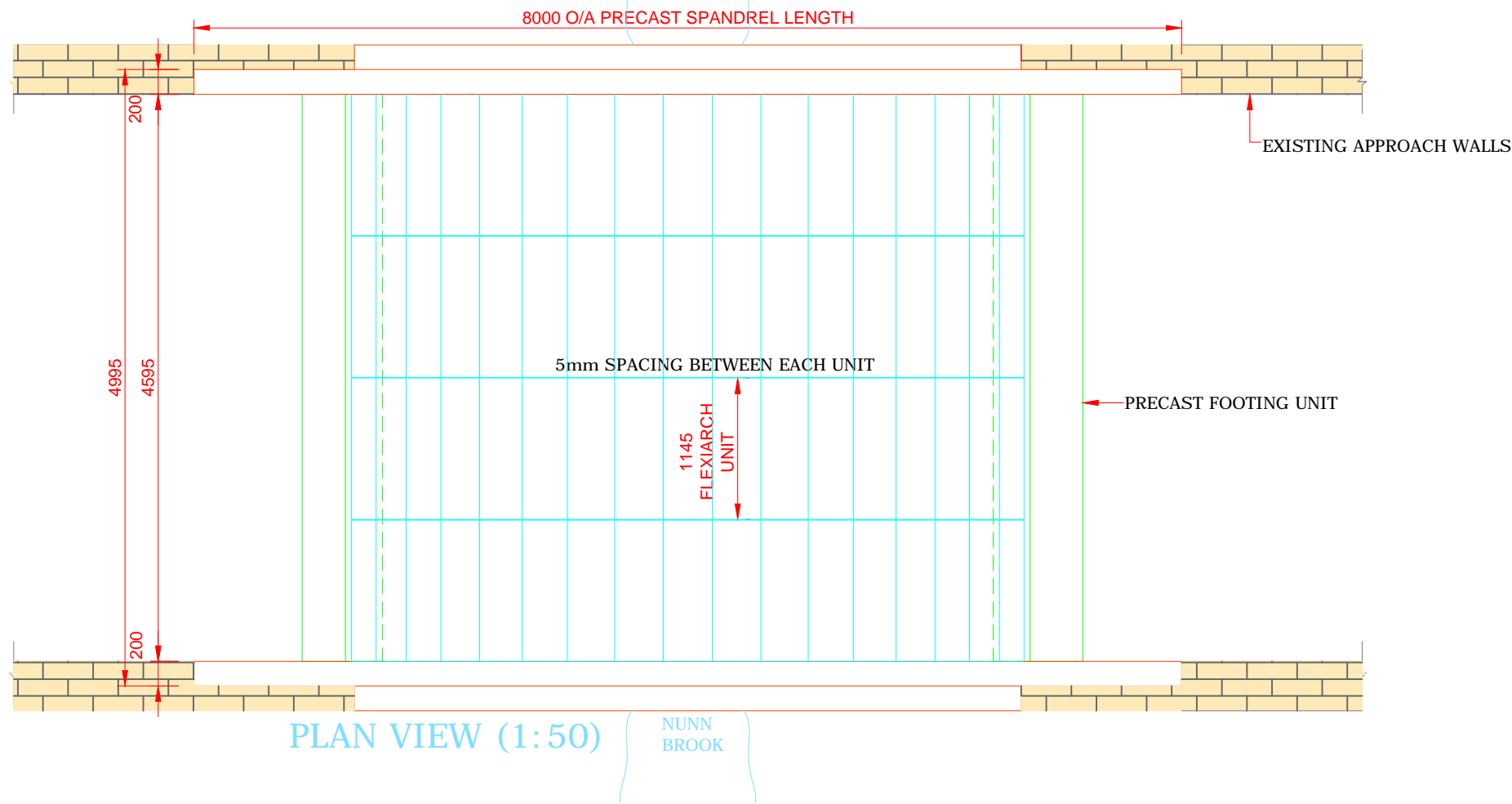
SPRINGING POINT DETAIL (1:20)



FLEXIARCH DIMENSIONS (1:50)

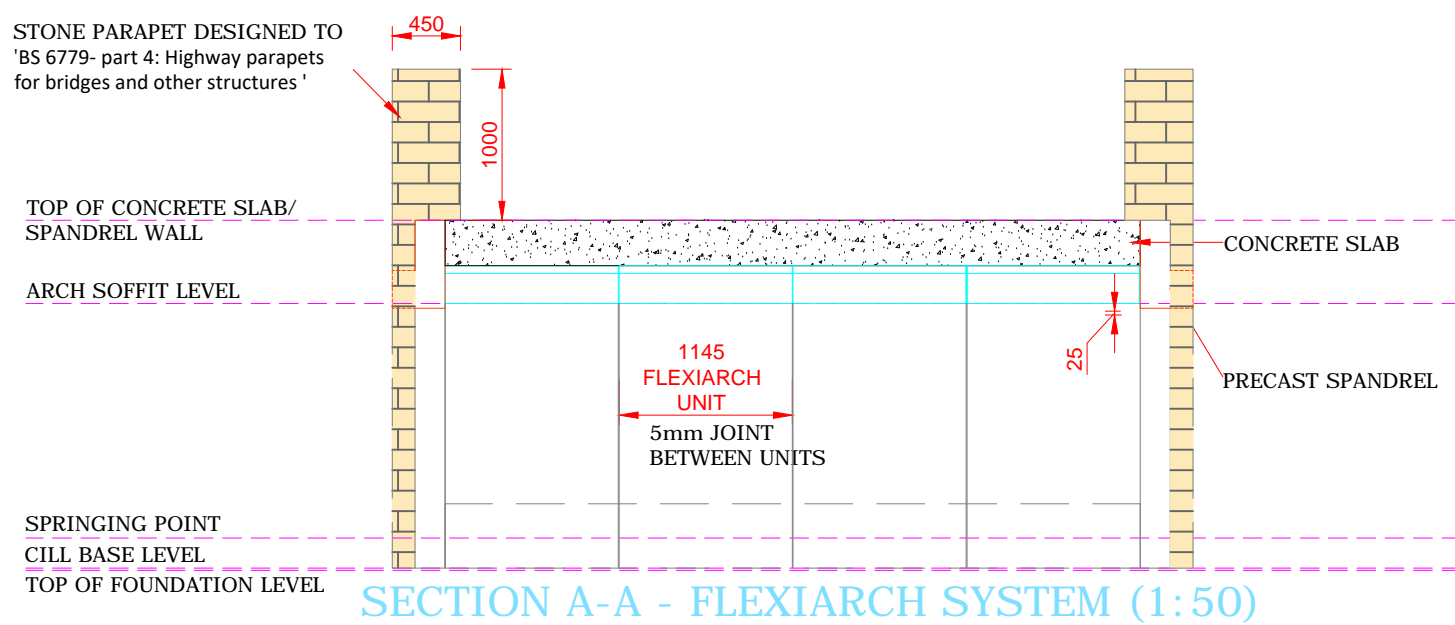


ELEVATION 'A' SHOWING SPANDREL WALL EXTENT & INFILL INFORMATION (1:50)



PLAN VIEW (1:50)

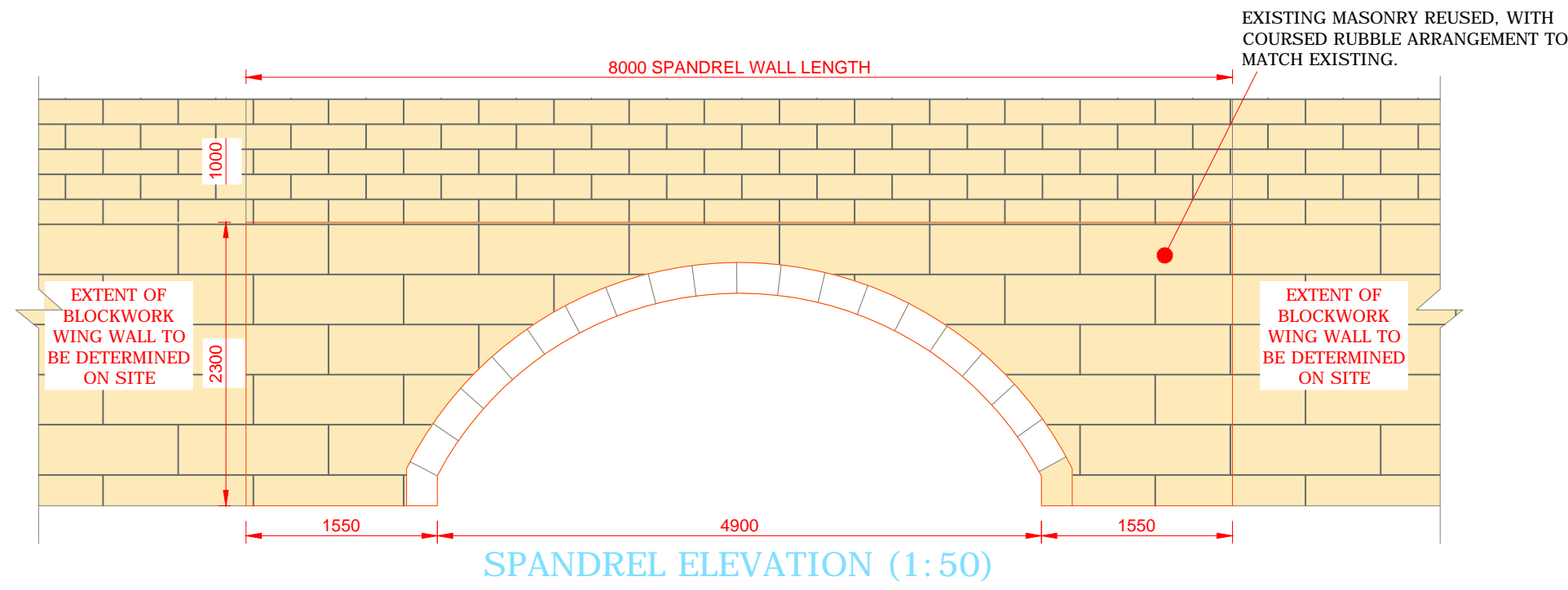
NUNN BROOK



SECTION A-A - FLEXIARCH SYSTEM (1:50)



EXISTING STONEWORK TO BE RECLAIMED AND UTILISED ON SITE AS CLADDING ON THE PROPOSED NEW BRIDGE AS SHOWN IN ELEVATION BELOW.



SPANDREL ELEVATION (1:50)

1. All dimensions are shown in mm, unless otherwise stated and levels are in metres to an arbitrary datum.
2. This drawing is to be read in conjunction with all other drawings and standard documentation.
3. C40/50 concrete mix (CIIB-V) as per BS 8500-1:2006 for all precast units
4. Chamfers around voussoirs to be 15mm and remainder of precast units to have chamfer of 25mm
5. Surface finish on exposed faces of Flexiarch units=F3
6. A min C35/45 Concrete Mix (CIIB or CIIA) as per BS 8500-1:2006 for the 300mm concrete slab. Steel floated (U4) finish required to top of this infill concrete to take waterproofing.
7. Surface finish on top of FlexiArch unit and to base of cill = U2. Top surface of cill is also to be left roughened
8. Nominal cover to Reinforcement 50mm + 5mm unless noted otherwise
9. S/S Projected U bars to be cast into back of spandrel wall units to tie into backfill concrete.
10. Bridge deck waterproofing and workmanship to comply with SHW Series 2003 and 2005.
11. Concrete infill should be completed as per Macrete's Guidance Notes.
12. Non-Shrinkable cementitious grout of min 50N/mm2 compressive strength to be used to fill the dowel holes and the gap between the cill units/spandrel walls and foundation. 24hrs to be allowed for grout to set before placement of arch units.
13. Deck slab concrete should reach a minimum 30N strength before any infill is laid on top of the slab.
14. The details shown in this drawing are related to Flexiarch elements.

PROPOSED BRIDGE

2	REVISED AS PER MARK-UPS RECEIVED 08.12.17. FROM ROLAND THOMAS	11.12.17	KO'D	AG
1	REVISED AS PER ON SITE INFO. RECEIVED 30.11.17. GEOMETRY OF BRIDGE UPDATED	30.11.17	KO'D	AG
Rev.	Notes	Date	Drawn	Chk'd

MACRETE
IRELAND LIMITED

50 CREAGH ROAD
TOOMEBRIDGE
CO. ANTRIM BT41 3SE
TEL (028) 796 50471 FAX 50084

precast concrete engineers

CONTRACTOR: **BUCKINGHAM**
Group Contracting

PROJECT:
NUNN BROOK BRIDGE
ACCESS ROAD BRIDGE

TITLE:
FLEXIARCH BRIDGE
GENERAL ARRANGEMENT DRAWING

SCALE:	DATE:	DRAWN:	CHECKED:
AS NOTED	05.07.17	KO'D	AG

DRAWING NO.:	REVISION NO.:
MACRETE/NUNN BROOK/GA.001	2

DRAWING STATUS:
PROPOSED BRIDGE