

GENERAL NOTES

- DO NOT SCALE FROM THIS DRAWING WORK TO FIGURED DIMENSIONS ONLY.
- NO DEVIATION FROM THE DETAILS SHOWN ON THIS DRAWING IS ALLOWED WITHOUT PRIOR PERMISSION IN WRITING.
- ALL DRAWINGS ARE TO BE READ IN CONJUNCTION WITH ALL ARCHITECTS, ENGINEERS AND SPECIALISTS DRAWINGS AND THE SPECIFICATION.
- THE CONTRACTOR SHALL INCORPORATE ALL THE REQUIREMENTS OF THE PRE-TENDER STAGE HEALTH & SAFETY PLAN.

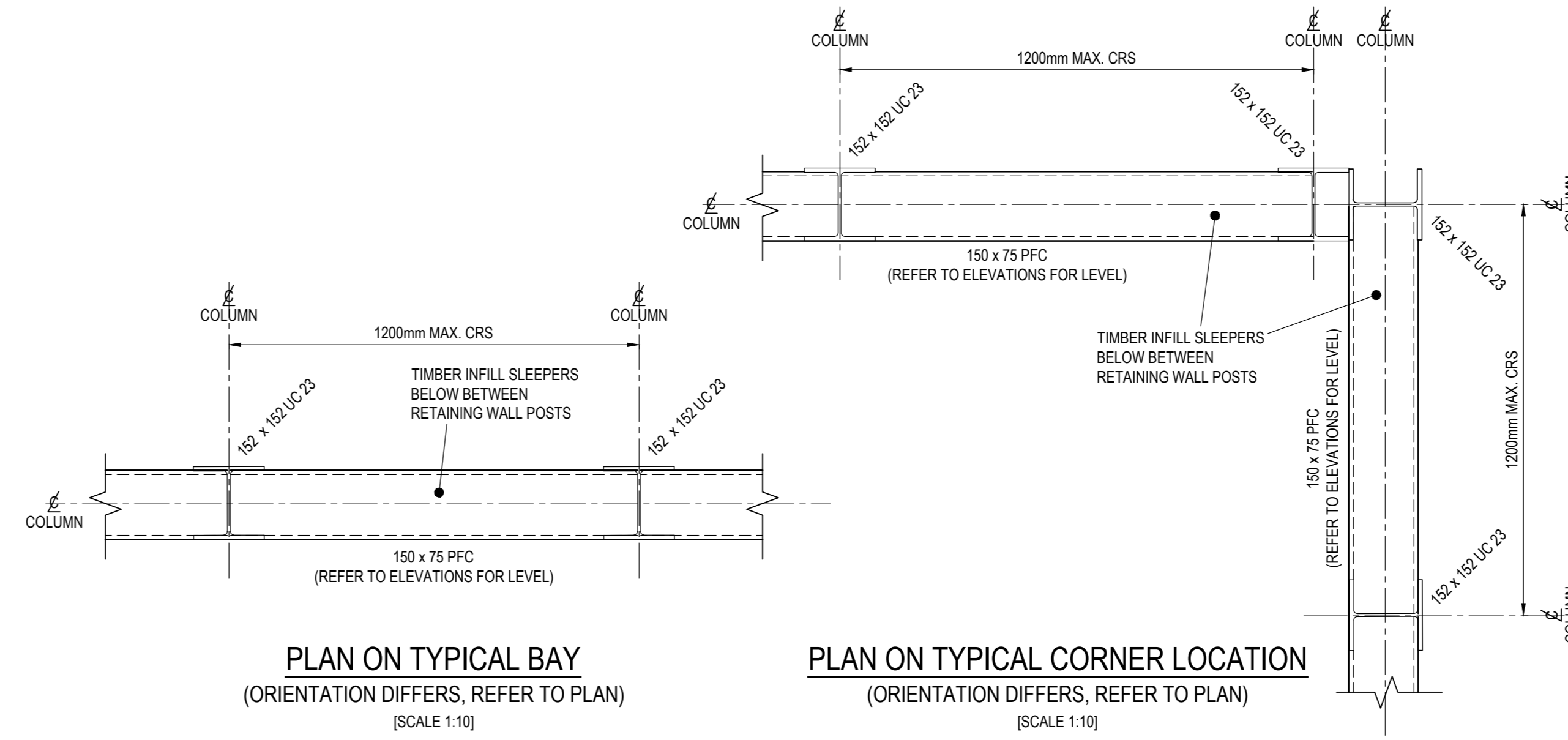
NOTE:
RETAINING WALL TO BE DESIGNED TO SUPPORT THE MOST ONEROUS ARRANGEMENT OF LIVE LOAD SURCHARGE AS DEFINED BY DOT STANDARD BD 3701:
HA LOADING = 12kN/m²
HB LOADING
30 UNITS = 12kN/m²
LOADING FOR EARTH PRESSURES AND DETERMINATION OF PARTIAL FACTORS OF SAFETY FOR DESIGN IS TO BE IN ACCORDANCE WITH BS 5361:
DESIGN OF RETAINING WALL TO BE IN ACCORDANCE WITH THE LATEST EDITION OF THE APPROPRIATE EUROCODES.
FENCE TO TOP OF RETAINING WALL INCLUDING FIXINGS DOWN TO TOP OF THE KINGPOST RETAINING WALL TO BE DESIGNED TO BE CAPABLE OF WITHSTANDING THE FOLLOWING HORIZONTAL IMPOSED LOADS:
HORIZONTAL UDL = 1.5kN/m (APPLIED 1.1m ABOVE FOOTPATH/DRIVEWAY LEVEL)
UDL CAPACITY TO INFILL = 1.5kN/m²
POINT LOAD CAPACITY TO INFILL = 1.5kN
ACTUAL APPEARANCE OF THE FENCE TO BE AS PER ARCHITECTURAL REQUIREMENTS, INCLUDING ANY MINIMUM GAP DIMENSION BETWEEN HORIZONTAL AND/OR VERTICAL MEMBERS.

NOTE:
FINAL SECTIONS OF TIMBER INFILL, STEEL POST AND HEAD BEAM TO BE DETERMINED BY SPECIALIST CONTRACTOR RESPONSIBLE FOR DESIGN

NOTE:
ALL STEELWORK TO BE GALVANISED

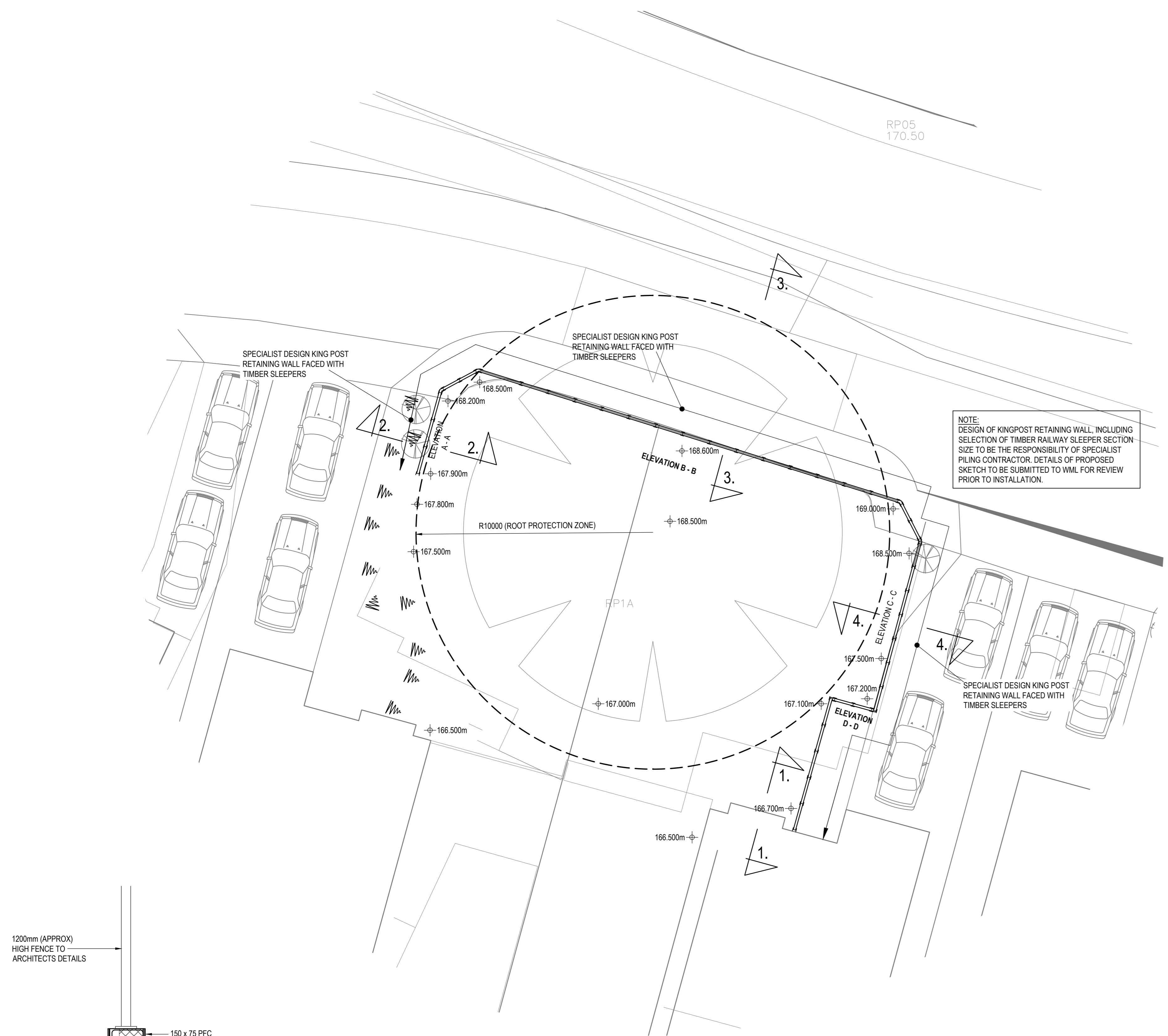


LOCATION PLAN
(SCALE 1:1000)

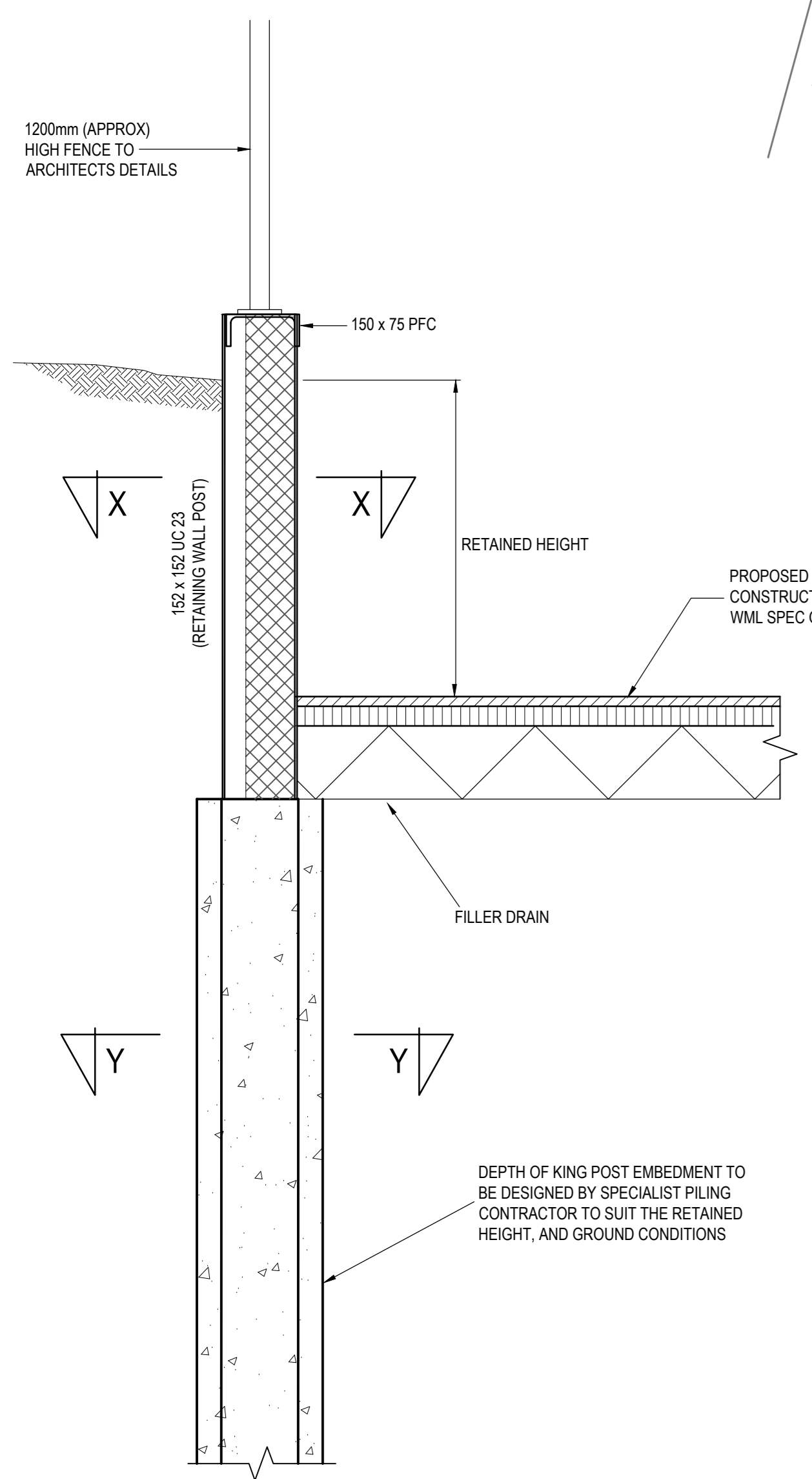


PLAN ON TYPICAL BAY
(ORIENTATION DIFFERS, REFER TO PLAN)
(SCALE 1:10)

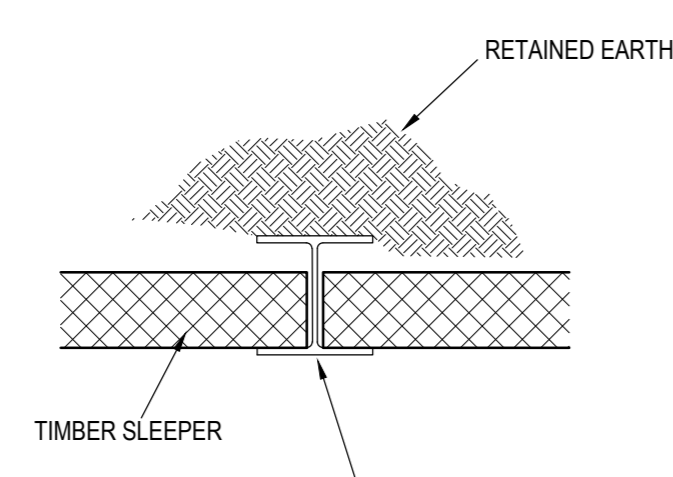
PLAN ON TYPICAL CORNER LOCATION
(ORIENTATION DIFFERS, REFER TO PLAN)
(SCALE 1:10)



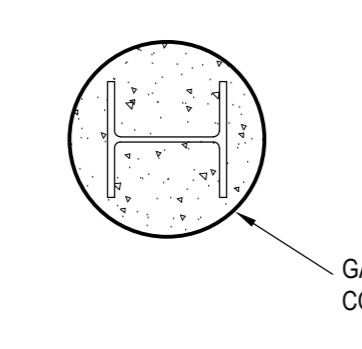
RETAINING WALL GENERAL ARRANGEMENT
(SCALE 1:100)



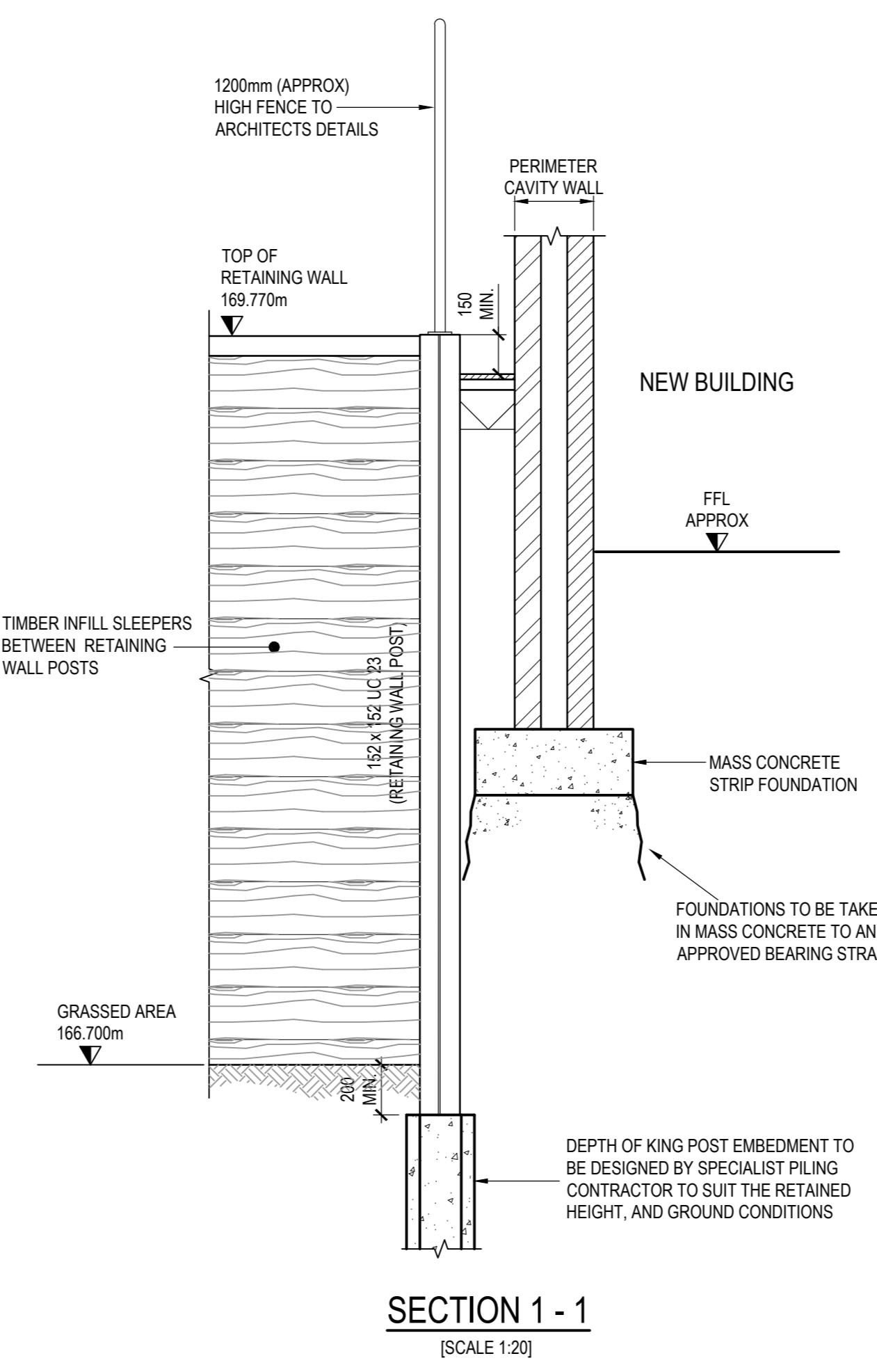
TYPICAL SECTION THROUGH KINGPOST RETAINING WALL
(SCALE 1:10)



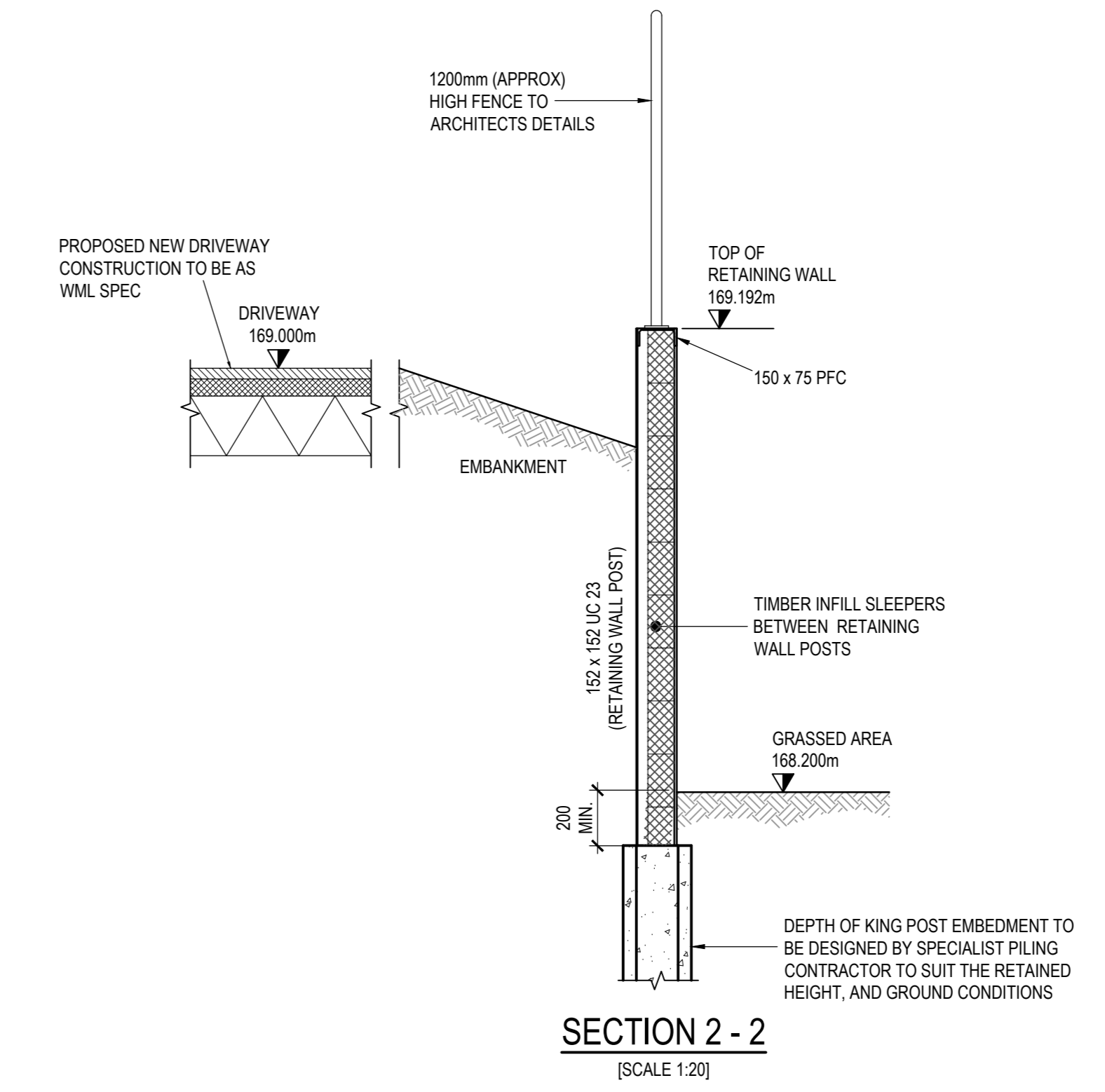
SECTION X - X
(SCALE 1:10)



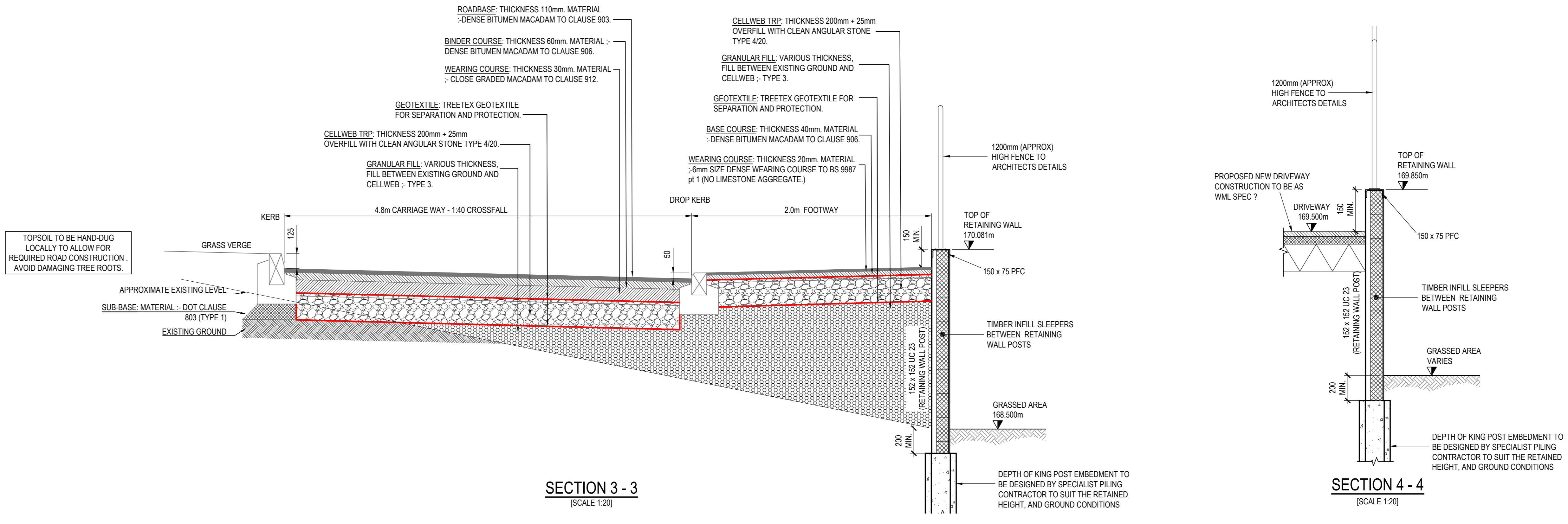
SECTION Y - Y
(SCALE 1:10)



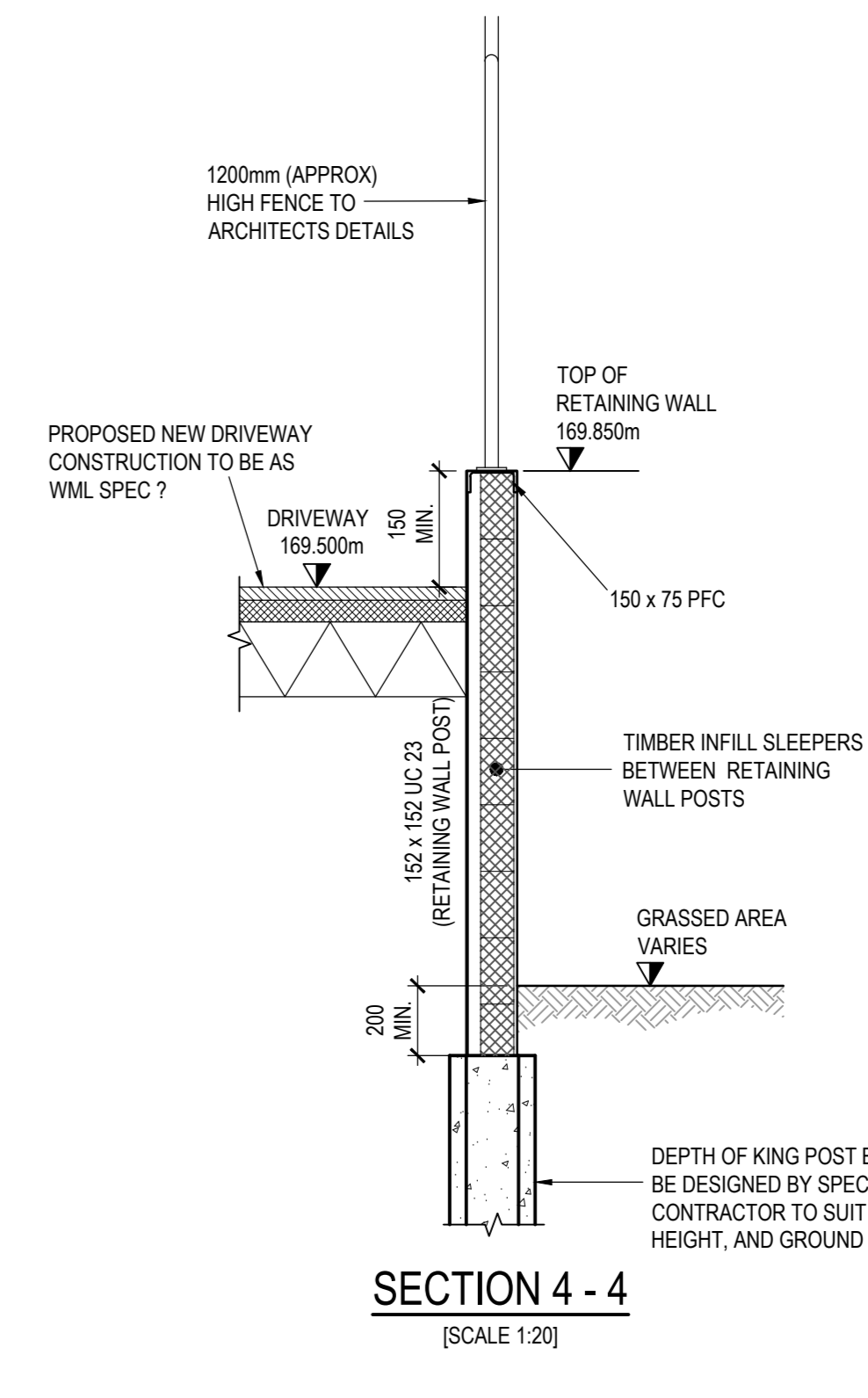
SECTION 1 - 1
(SCALE 1:20)



SECTION 2 - 2
(SCALE 1:20)



SECTION 3 - 3
(SCALE 1:20)



SECTION 4 - 4
(SCALE 1:20)

PRELIMINARY DRAWING

P2	LAYOUT RE-DRAWN, SECTIONS AMENDED TO SUIT	22.09.17	AB	NG
P1	FIRST PRELIMINARY ISSUE	SEP 17	AB	MS
Rev.	Amendment	Date	By	Chkd

Project
RESIDENTIAL DEVELOPMENT DINTING ROAD, GLOSSOP

Client
WESTSHIELD LTD

Title
PROPOSED RETAINING WALL GENERAL ARRANGEMENT AND DETAILS SHEET 1

Drawn
AB

Checked
MS

Date
SEP 17

Scale
AS SHOWN @ A1

WML CONSULTING
Civil, Structural & Geotechnical Engineers

No. 8 Oak Green
East Road
Brimley Green Business Park
Cheshire Hale
Cheshire, S10 6JL
Tel: 0161 482 0000
Fax: 0161 486 9310
email: info@wmlconsulting.com
www.wmlconsulting.com

Job No. **7783** Drawing No. **E500** P2