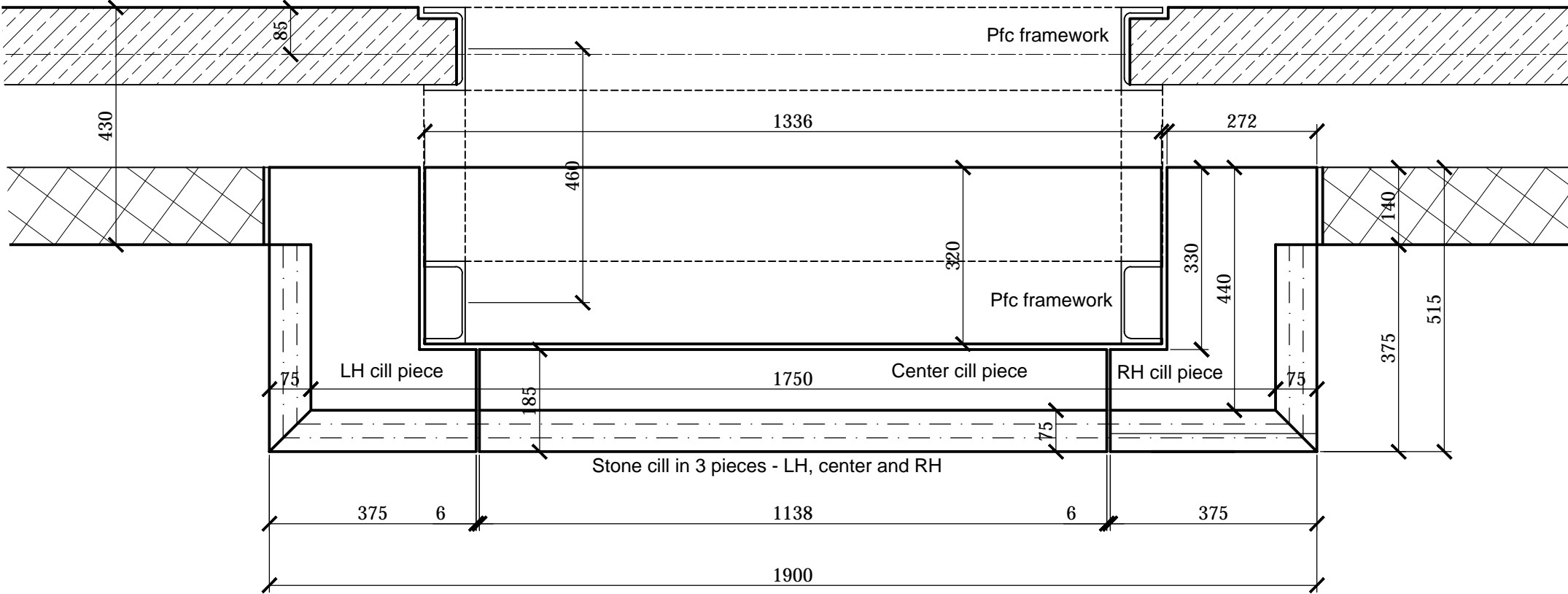
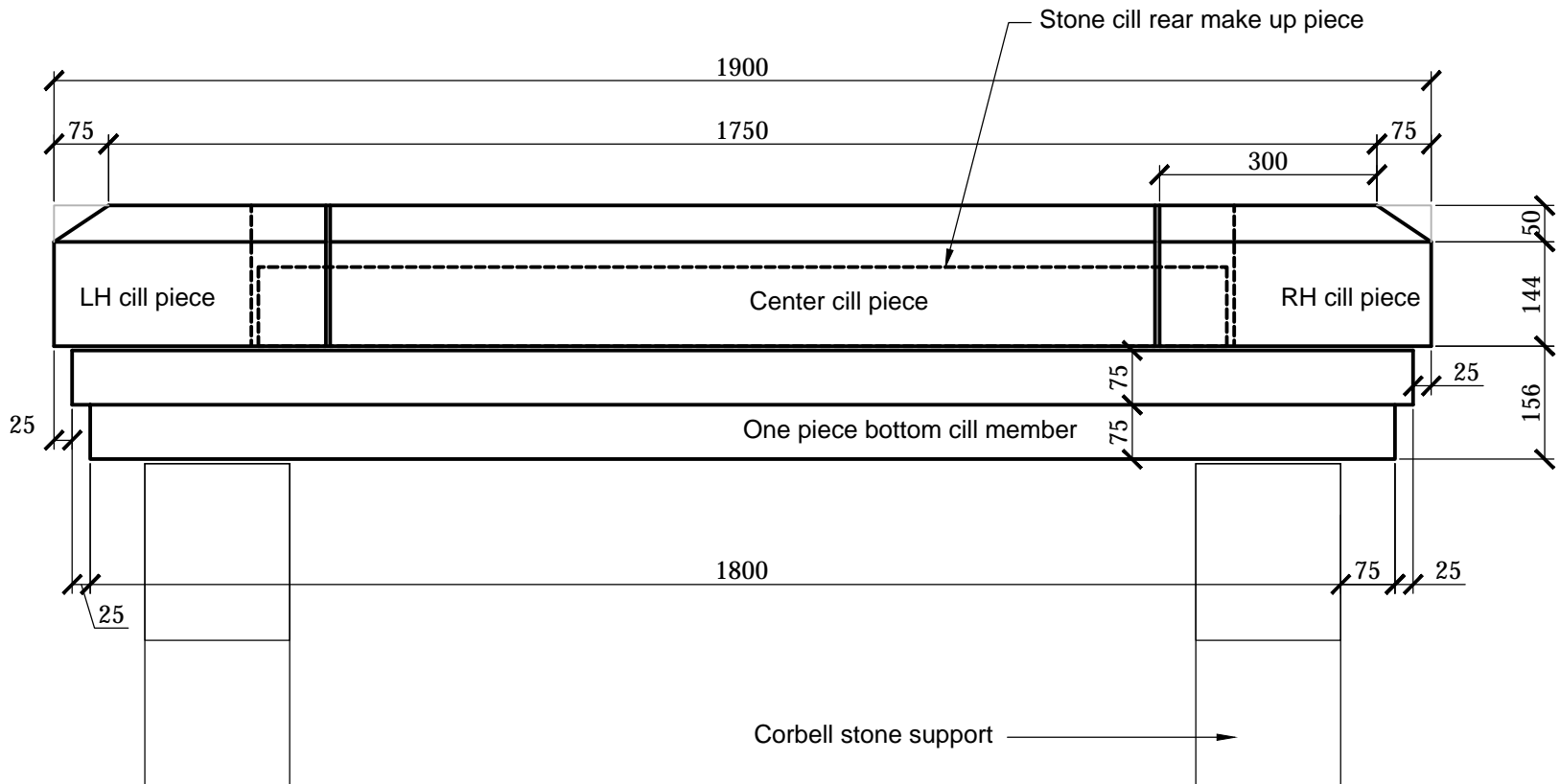


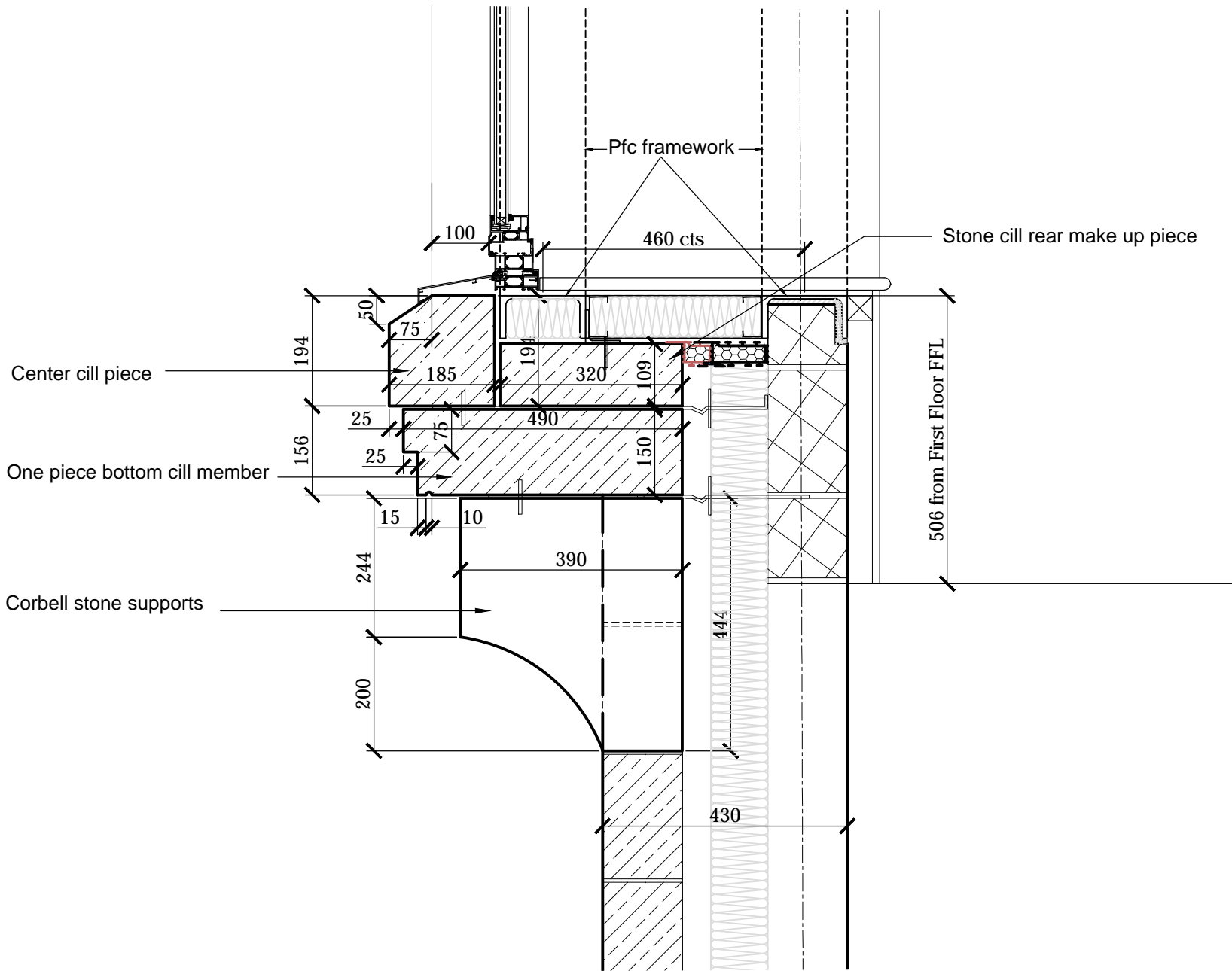
DETAIL A - Dormer Window Reveal (1:5)



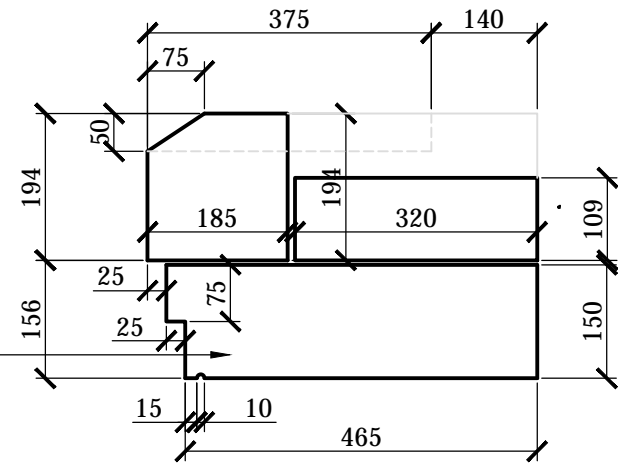
PLAN - Dormer Window Cill (1:10)



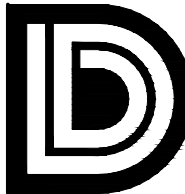

ELEV - Dormer Window Cill (1:10)



SECTION - Dormer Window Cill (1:10)  
See Detail 1 - 1500548/F/31



STONE COMPONENTS TO CILL

LOCATION / KEY PLAN N.T.S.			
A	WALL TIES REVISED TO S.E.S DETAILS	31.10.16	PS
Rev.	Details of Revision	Date	Initial
<div><div></div><div><div>Derbyshire County Council</div><div>Corporate Property</div><div>Director of Property:-</div><div>Jeremy Goacher</div><div>Chatsworth Hall, Chesterfield Road,</div><div>Matlock, Derbyshire DE4 3FW</div><div>Tel. (01629) 580000 Fax. (01629) 536266</div></div></div>			
Partner Details			
Project GLOSSOP LIBRARY PROPOSED EXTENSION TO GLOSSOP ADULT EDUCATION CENTRE			
UPRN Number 2613-01			
Drawing Number 1500548/F12		Revision A	
Title PROPOSED WALL PLAN DORMER CILL DETAILS			
Scale 1:5 , 1:10	Drawn PS	Checked PSC	
Original Size A1	Date AUGUST 2016	Date 27-01-2017	
Status CONSTRUCTION			
DO NOT SCALE Use only written dimensions. All dimensions must be verified prior to the works being put into hand and any discrepancies reported to the originator.			
<div><div></div><div>INVESTOR IN PEOPLE</div></div>			