

Classification **CONTROLLED**

**HEALTH AND SAFETY INFORMATION**  
(Refer to Pre-Tender CDM Documentation)

- TYPE (A): (150mm cavity), Ancon YDS - 300mm long (with drip) o.s.a. fixed @ 750mm horizontal staggered centres x 450mm vertically. F30/215A
- TYPE (B): (150mm cavity), Ancon YDP - 175mm & 200mm long (with drip) o.s.a. fixed @ 225mm vertical centres. F30/215B
- TYPE (C): Ancon PPV - 125mm long (with drip) o.s.a. fixed @ 225mm vertical centres. F30/215C
- TYPE (D): (125mm cavity), Internal Cavity walls, block up existing window openings Ancon SD1 - 275mm long o.s.a. (cos to suit) fixed @ 750mm staggered horizontal centres and 450mm vertical centres. F30/215D
- TYPE (G): Ancon YPN - 110mm long o.s.a. fixed @ 225mm vertical centres. F30/215G (to suit proprietary manufacturer's wind post)
- TYPE (F): Ancon SPN - Inner leaf of wall fixing to windpost 110mm long o.s.a with debonding sleeve one side fixed @ proprietary manufacturer's windpost. F30/215F
- TYPE (H): Ancon HR-H - Outer leaf of wall fixing to windpost 300mm long o.s.a fixed @ 450mm vertical centres fixed to inner leaf cavity wall to steelwork. F30/215H

LOCATION / KEY PLAN  
N.T.S.

Rev: WALL TIES REVISED TO S.E.'S DETAILS 31.10.16 PS  
Date Initial

A	WALL TIES REVISED TO S.E.'S DETAILS	31.10.16	PS
Rev	Details of Revision	Date	Initial

**Derbyshire County Council**  
Corporate Property  
Director of Property:-  
Jeremy Goacher  
Chatsworth Hall, Chesterfield Road,  
Mastock, Derbyshire DE4 3FV  
Tel. (01629) 580000 Fax. (01629) 536266

Partner Details

Project  
**GLOSSOP LIBRARY  
PROPOSED EXTENSION TO  
GLOSSOP ADULT EDUCATION  
CENTRE**

UPRN Number  
**2613-01**

Drawing Number  
**1500548/F11**

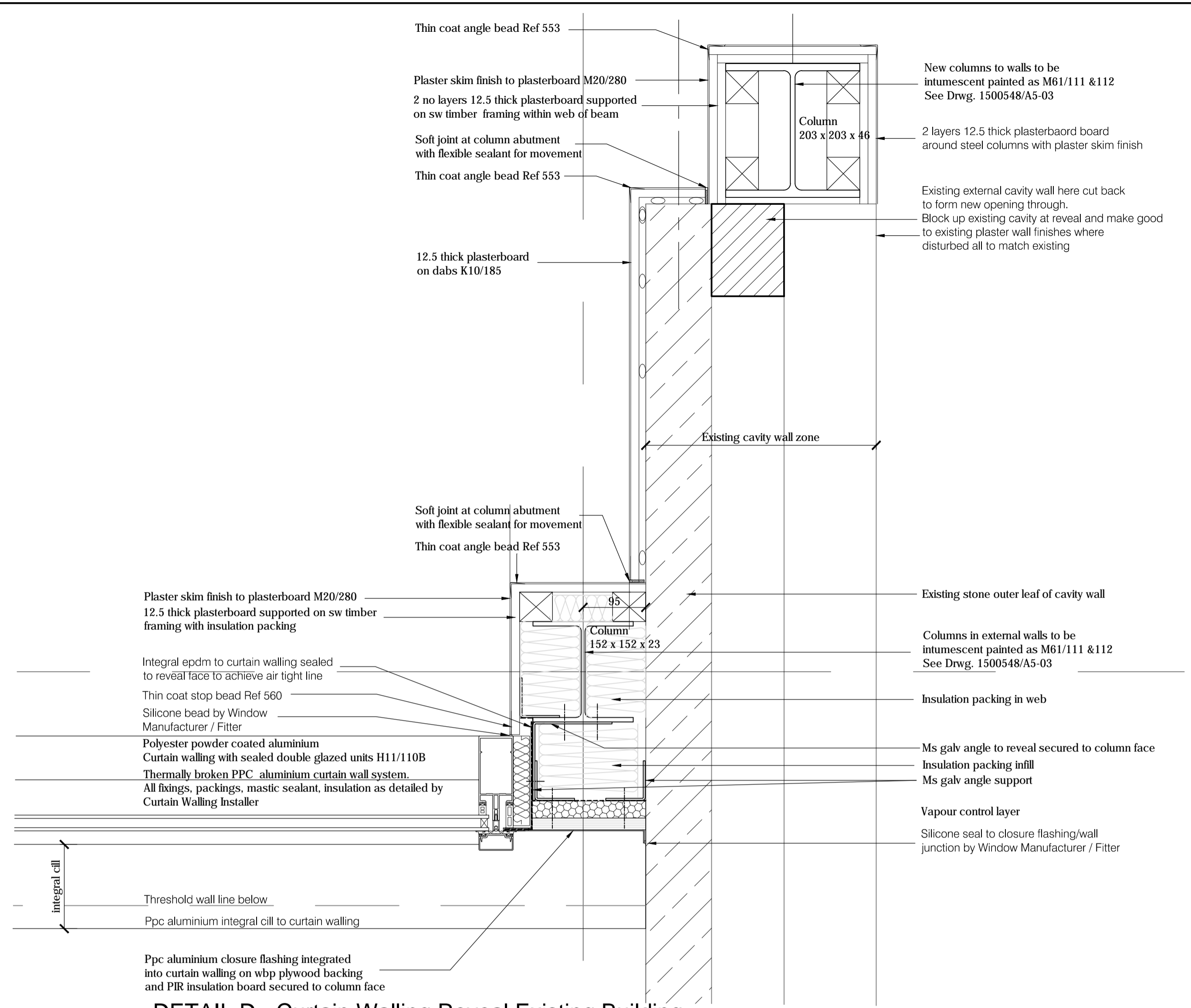
Revision  
**A**

Title  
**PROPOSED  
WALL PLAN DETAILS**

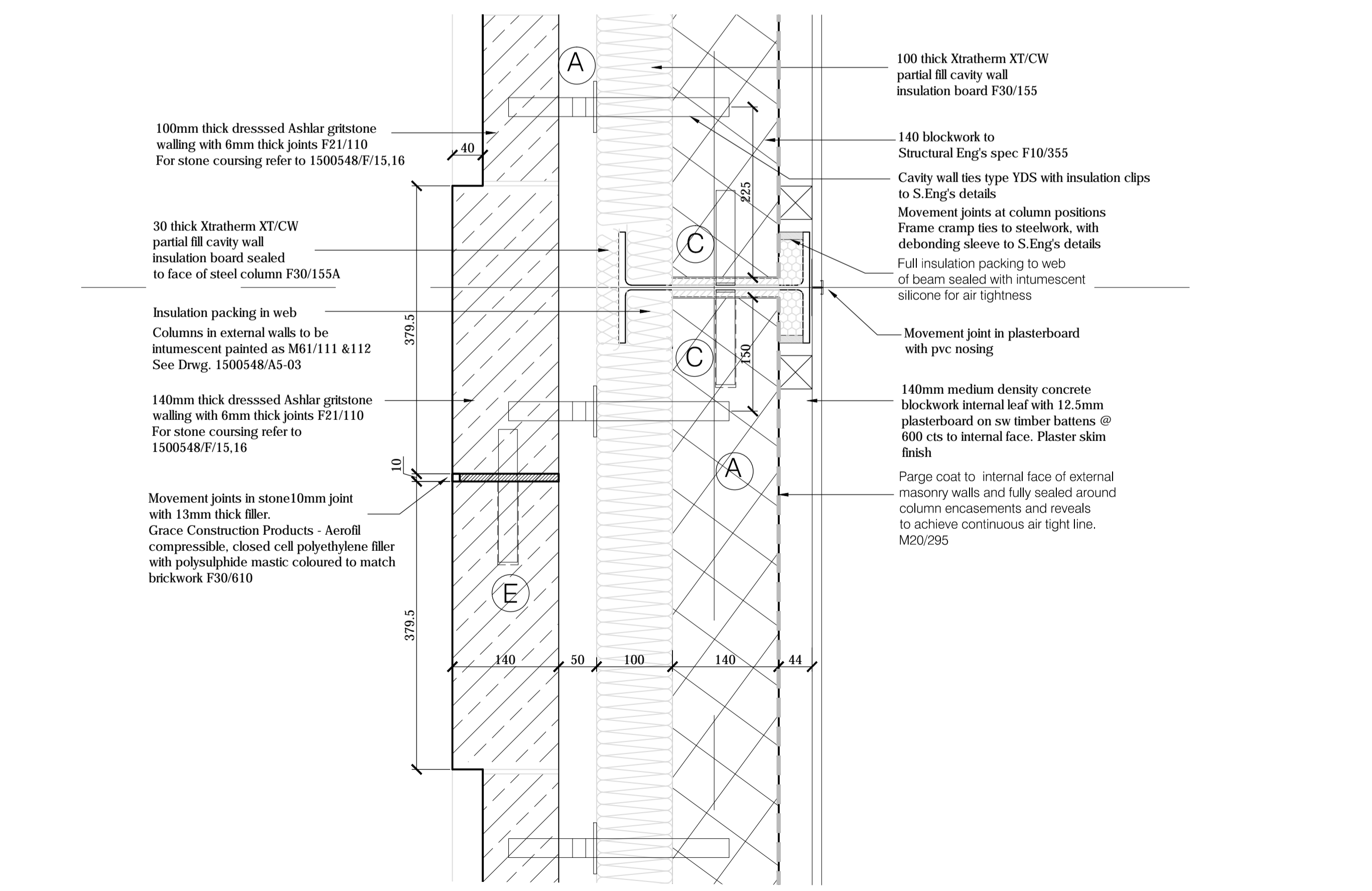
Scale	1:5	Drawn	PS	Checked	PSC
Original Size	A1	Date	AUGUST 2016	Date	27-01-2017

Status  
**CONSTRUCTION**

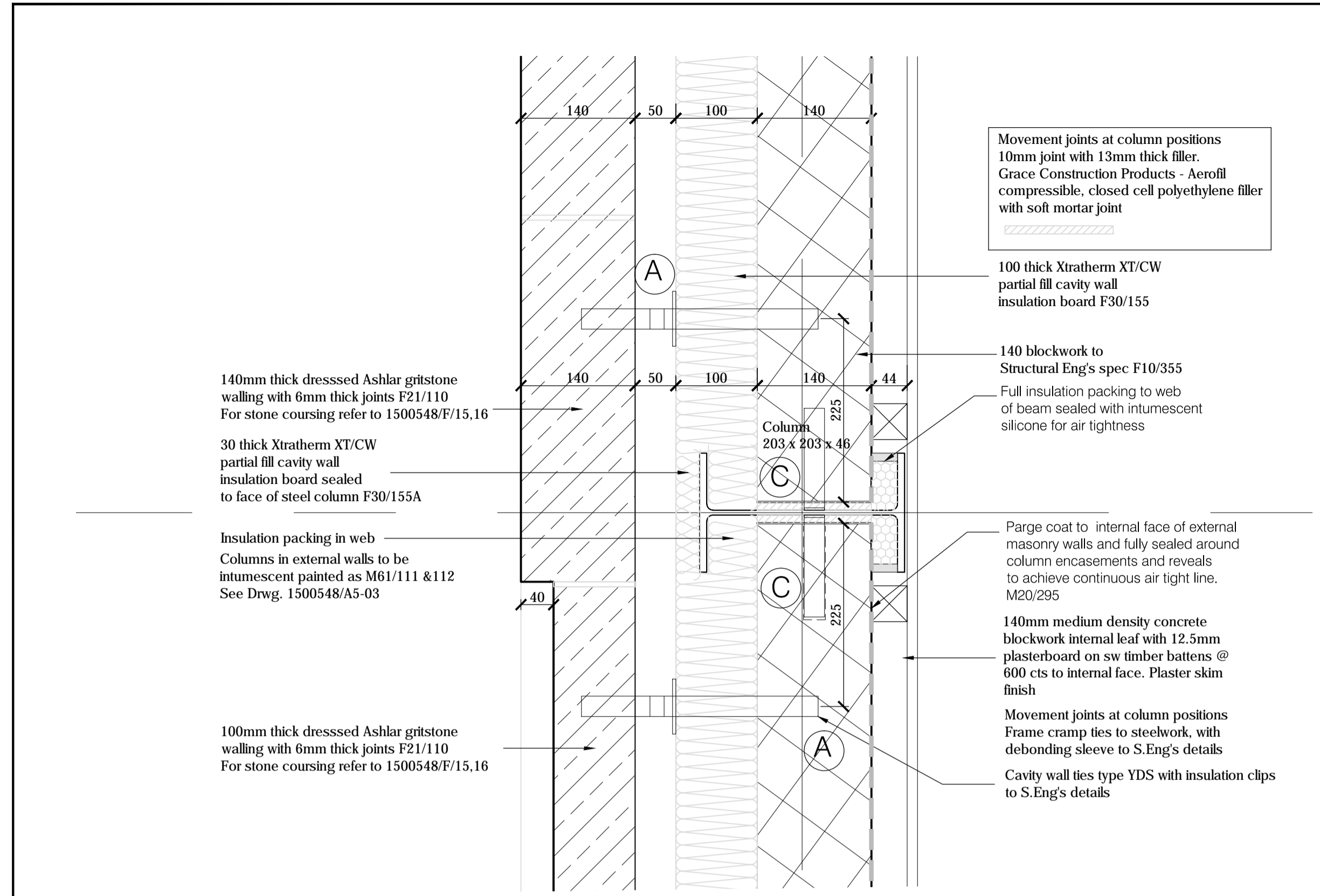
DO NOT SCALE  
Use only written dimensions. All dimensions must be verified prior to the works being put into hand and any discrepancies reported to the originator.



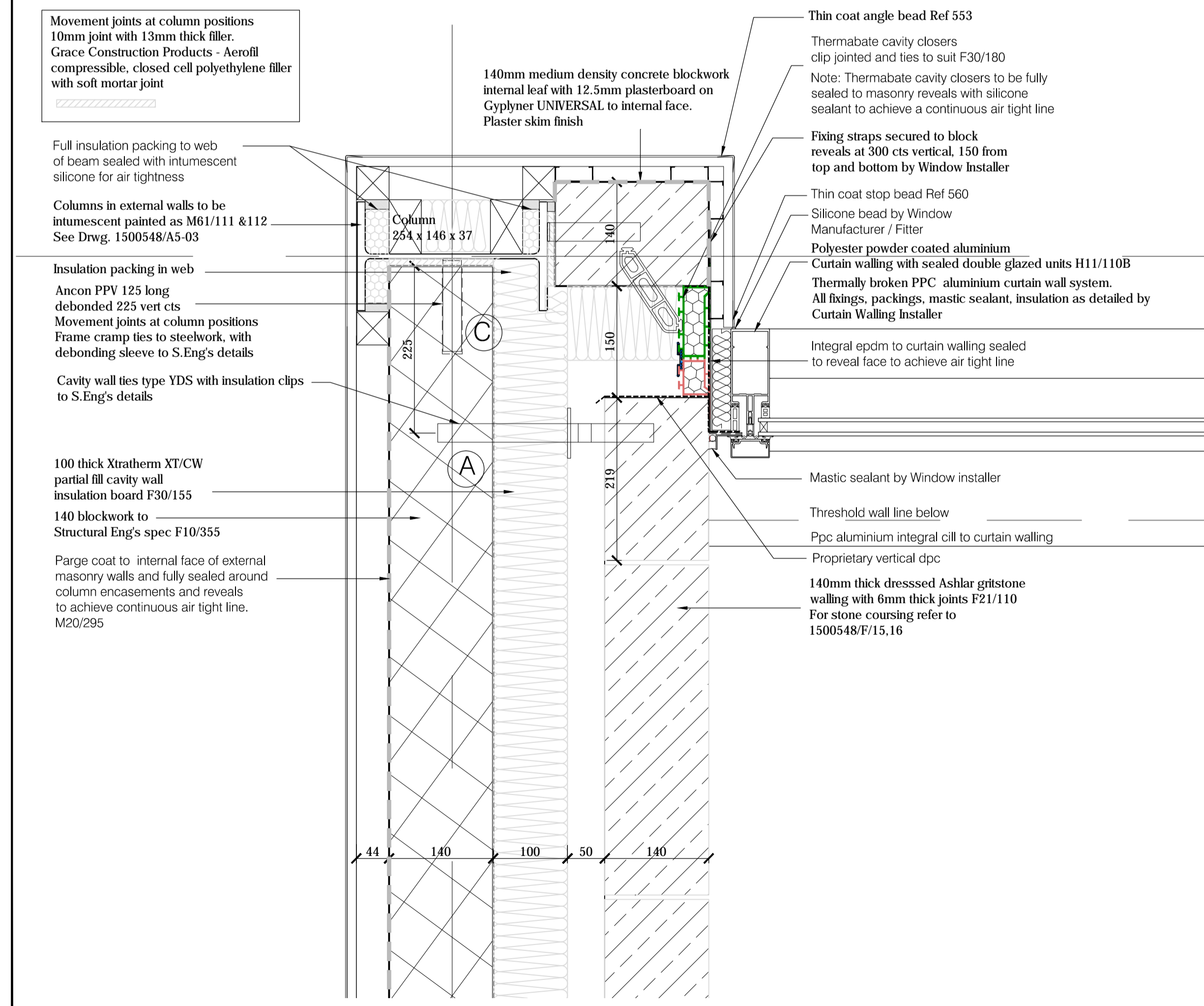
DETAIL D - Curtain Walling Reveal Existing Building



DETAIL B - Mid Movement Joint



DETAIL A - Stone Recess



DETAIL C - Curtain Walling Reveal