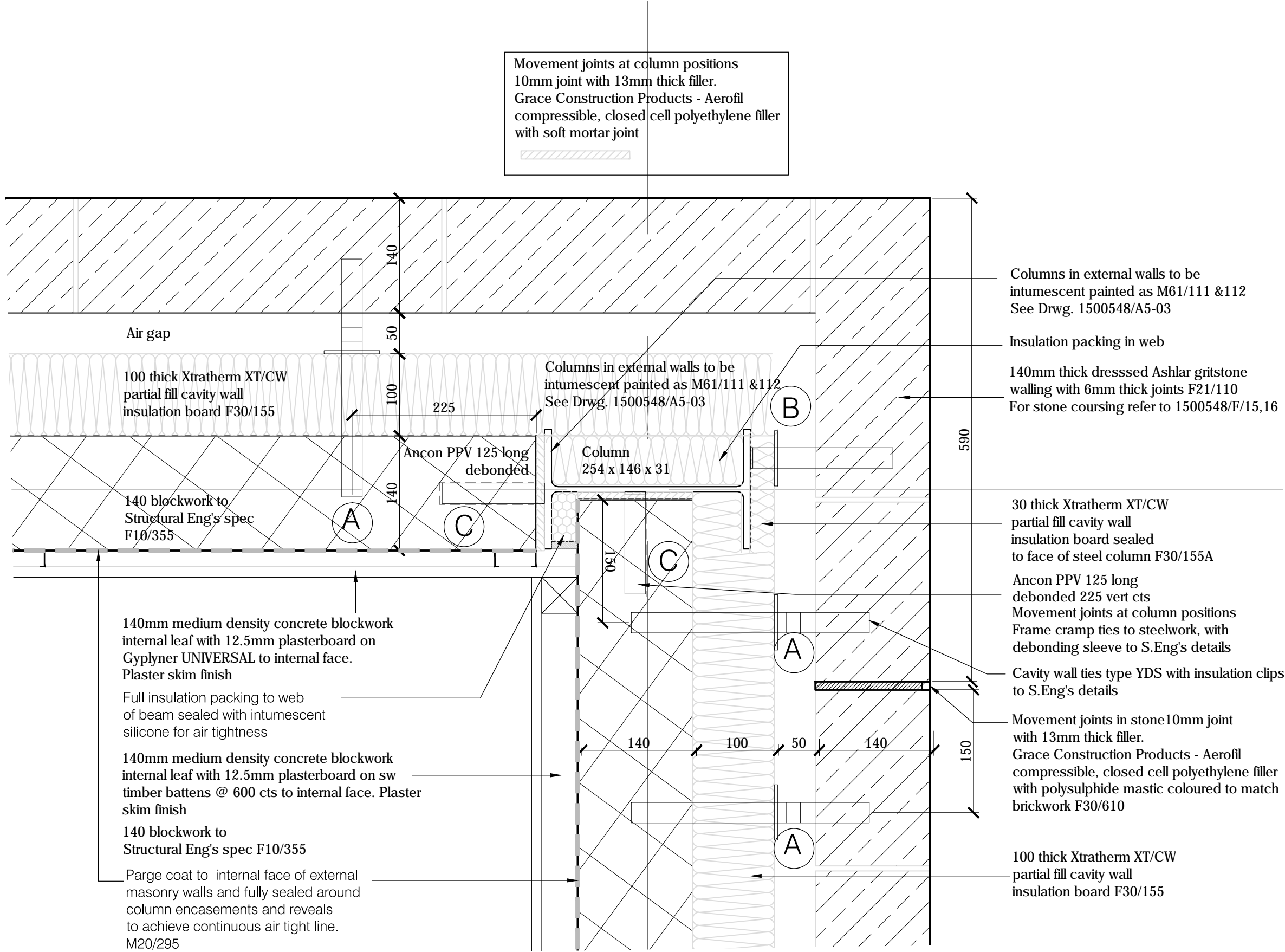
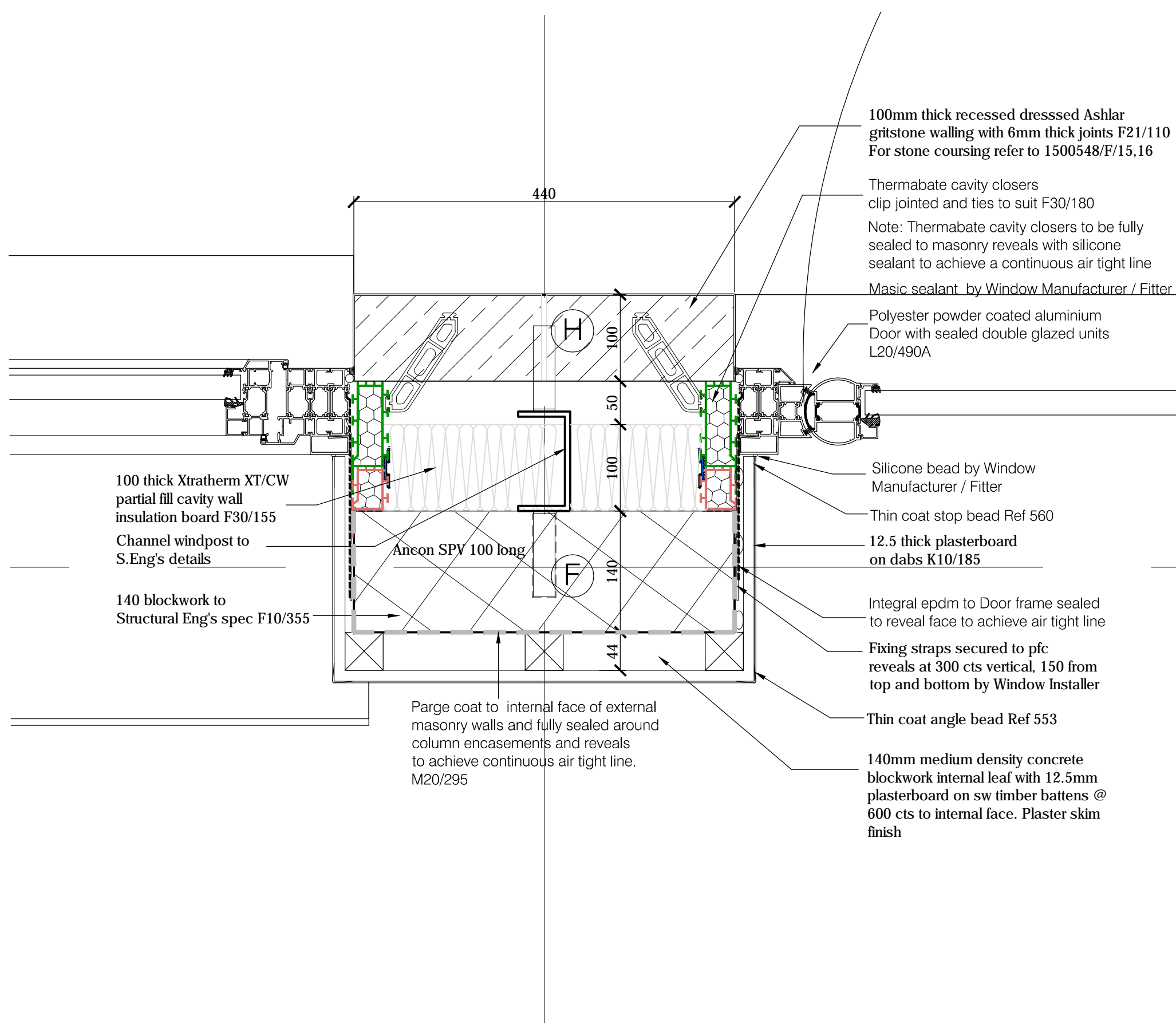


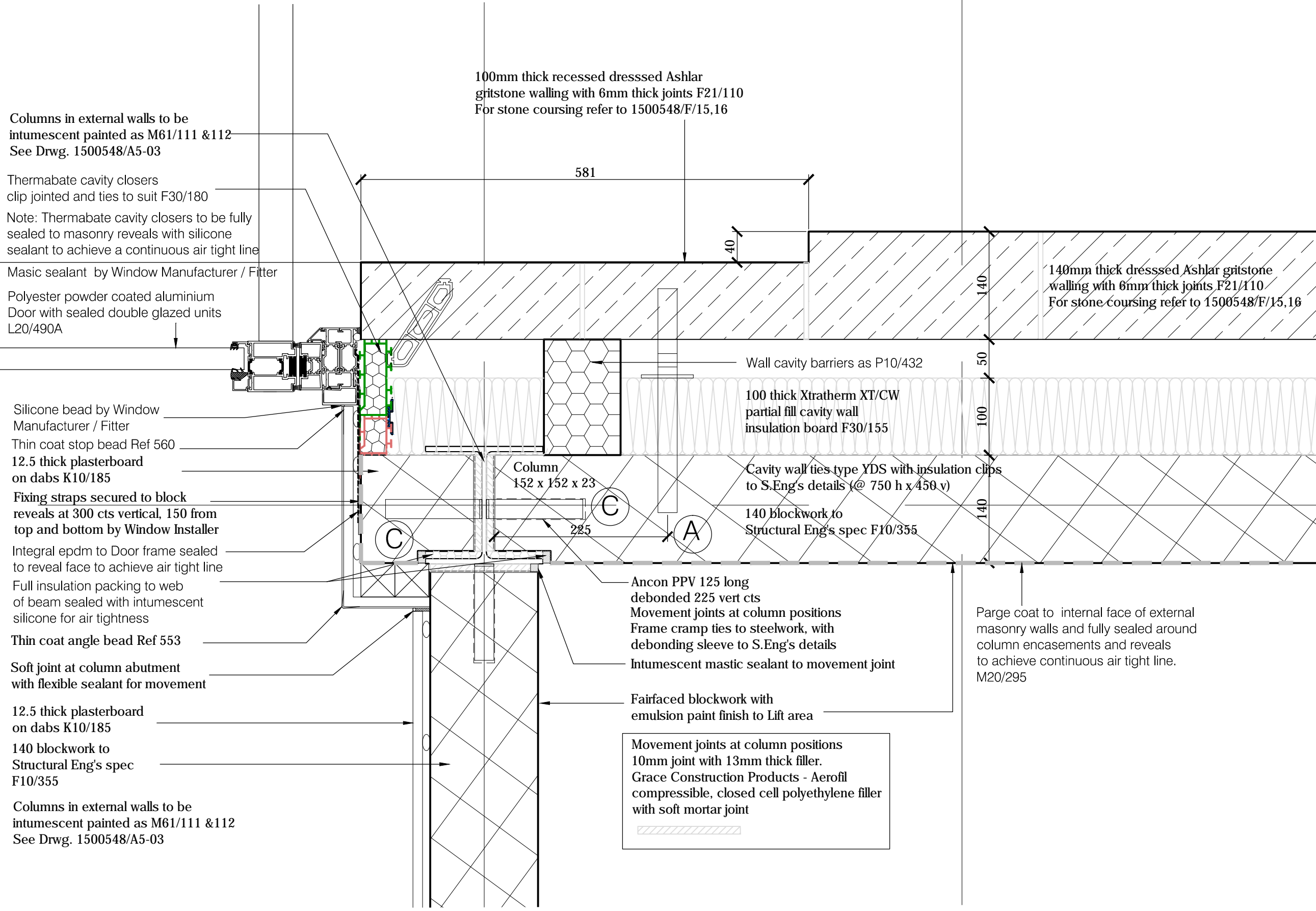
DETAIL D - Column



DETAIL A - External Corner with Movement Joint



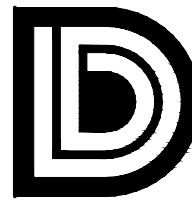

DETAIL C - Window/Door Reveal



DETAIL B - Door Reveal

Classification	CONTROLLED
HEALTH AND SAFETY INFORMATION (Refer to Pre-Tender CDM Documentation)	

- TYPE (A): (150mm cavity).  
Ancon YDS - 300mm long (with drip) osa.  
fixed @ 750mm horizontal staggered centres x 450mm vertically. F30/215A
- TYPE (B): (150mm cavity).  
Ancon YDP - 175mm & 200mm long (with drip) osa.  
fixed @ 225mm vertical centres. F30/215B
- TYPE (C): Ancon PPV - 125mm long (with drip) osa.  
fixed @ 225mm vertical centres. F30/215C
- TYPE (D): (125mm cavity). Internal Cavity walls, block up existing window openings  
Ancon SD1 - 275mm long osa. (cos to suit)  
fixed @ 750mm staggered horizontal centres and 450mm vertical centres. F30/215D
- TYPE (E): Ancon YPN - 110mm long osa.  
fixed @ 225mm vertical centres. F30/215G  
(to suit proprietary manufacturer's wind post)
- TYPE (F): Ancon SPN - Inner leaf of wall fixing to windpost  
110mm long osa with debonding sleeve one side fixed @ proprietary manufacturer's windpost. F30/215F
- TYPE (H): Ancon HR-H - Outer leaf of wall fixing to windpost  
300mm long osa  
fixed @ 450mm vertical centres fixed to inner leaf cavity wall to steelwork. F30/215H

LOCATION / KEY PLAN N.T.S.			
A	WALL TIES REVISED TO SE'S DETAILS	31.10.16	PS
Rev.	Details of Revision	Date	Initial
<div><div><b>Derbyshire County Council</b> <b>Corporate Property</b> Director of Property:- Jeremy Goacher Chatsworth Hall, Chesterfield Road, Matlock, Derbyshire DE4 3FW Tel. (01629) 580000 Fax. (01629) 536266</div></div>			
Partner Details			
Project <div>GLOSSOP LIBRARY PROPOSED EXTENSION TO GLOSSOP ADULT EDUCATION CENTRE</div>			
UPRN Number 2613-01			
Drawing Number 1500548/F10		Revision A	
Title <div>PROPOSED WALL PLAN DETAILS</div>			
Scale 1:5	Drawn PS	Checked PSC	
Original Size A1	Date AUGUST 2016	Date 27-01-2017	
Status CONSTRUCTION			
DO NOT SCALE Use only written dimensions. All dimensions must be verified prior to the works being put into hand and any discrepancies reported to the originator.			
<div><div>INVESTOR IN PEOPLE</div></div>			