

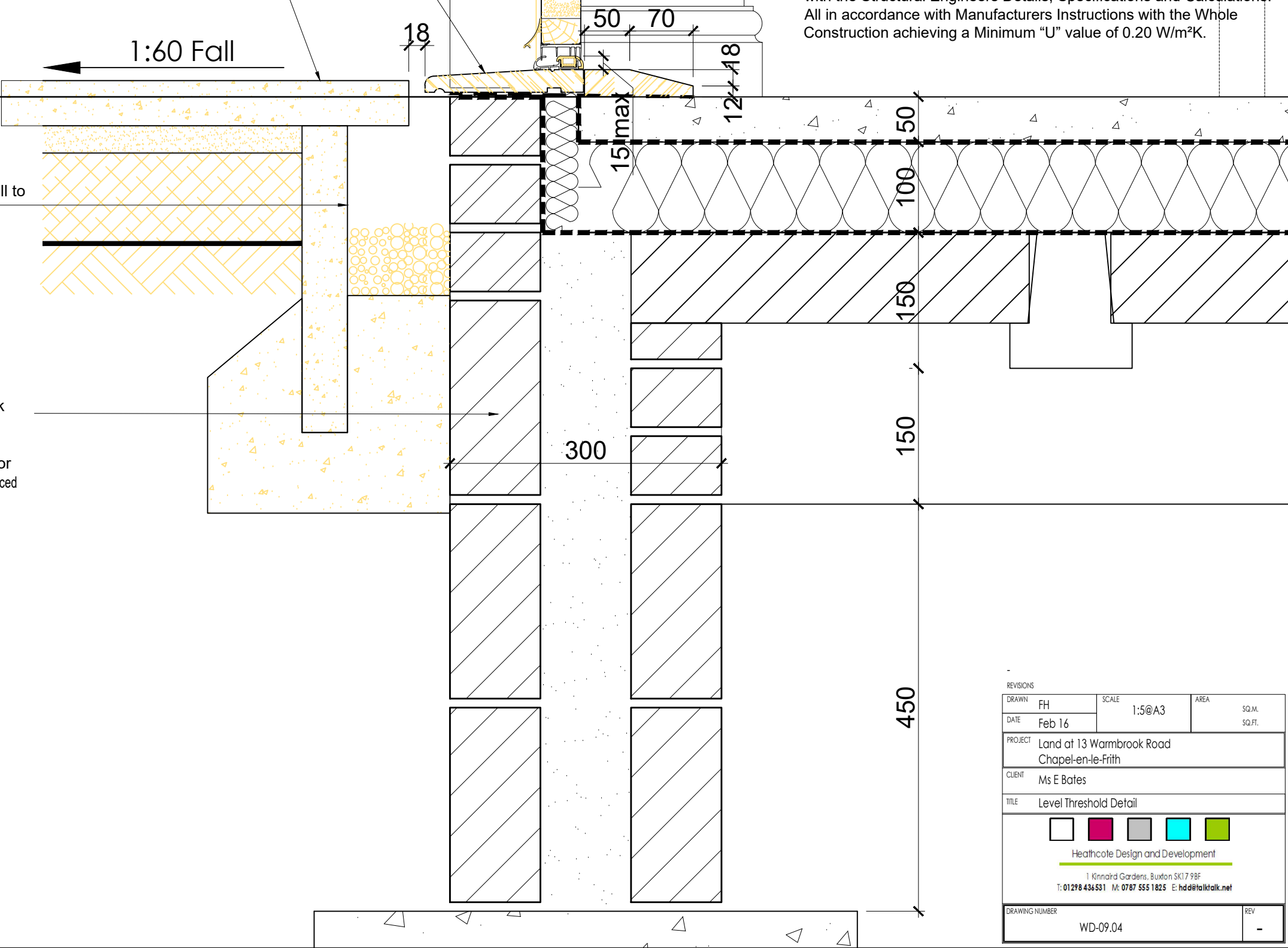
175x25mm Synthetic cill section (Part M) with weather guard threshold.
Hard transition strip to internal side of the frame.

450x450 Marshalls saxon buff paving slabs laid on 30mm sand cement
base on 100mm well compacted type 2 sub base. slabs to be laid to fall of
1:60.

Flag upstand to create drainage void to level threshold with granular fill to
drain away any surface water.

External Walls of 303mm cavity construction comprising of 100mm thick
blockwork internally (1350kg/m³ to 1600kg/m³ density, Lambda of 0.19)
with a compressive strength to Structural Engineers Specifications and
Calculations. 100mm cavity partially filled with 50mm Celotex CG5000 or
Equivalent insulation board and an outer skin of 102mm Forticrete Pitched Faced
Old Weathered Black Walling Stone.
. Finished with Plasterboard on Dabs and Skim Finish.
Whole Wall Construction to achieve minimum “U” value of 0.25W/m²K.

The Ground Floor Construction to be 50mm Gyvlon Screed, on
Polythene (500 Gauge) Separating Layer on 100mm Celotex FR5000 or
Equivalent Insulation and a Minimum 20mm Celotex TB4000 or
Equivalent Insulation returned up the Perimeters to prevent cold
bridging, All on a continuous visqueen radon membrane (to
manufactures details), on Beam and Block Floor Units in Accordance
with the Structural Engineers Details, Specifications and Calculations.
All in accordance with Manufacturers Instructions with the Whole
Construction achieving a Minimum “U” value of 0.20 W/m²K.



REVISIONS				
DRAWN	FH	SCALE 1:5@A3	AREA	SQ.M. SQ.FT.
DATE	Feb 16			
PROJECT	Land at 13 Warmbrook Road Chapel-en-le-Frith			
CLIENT	Ms E Bates			
TITLE	Level Threshold Detail			
<div><div></div><div></div><div></div><div></div><div></div></div> <div>Heathcote Design and Development</div> <div>1 Kinnaird Gardens, Buxton SK17 9BF</div> <div>T: 01298 436531 M: 0787 555 1825 E: hdd@talktalk.net</div>				
DRAWING NUMBER	WD-09.04			REV -