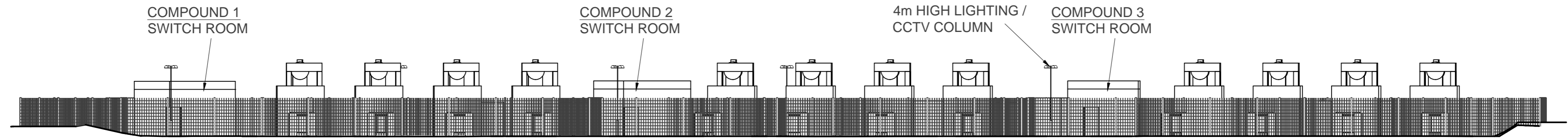
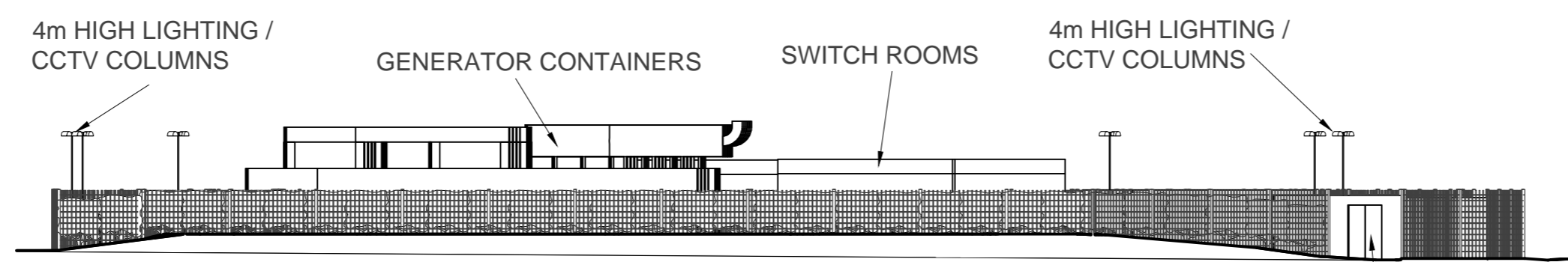


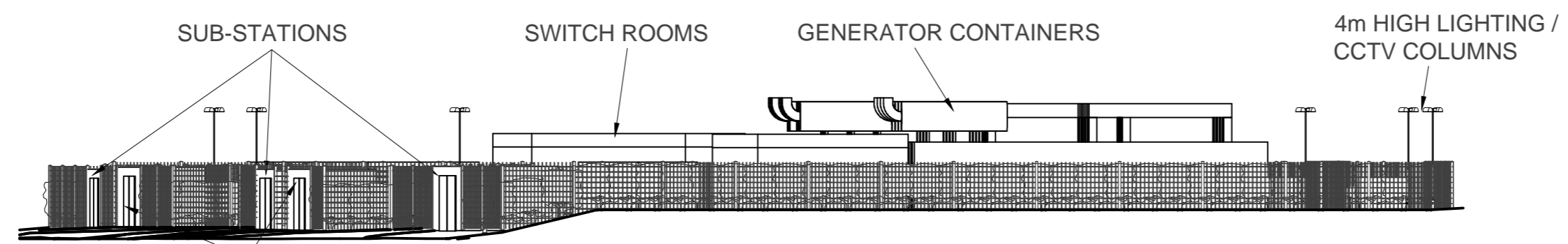
FRONT ELEVATION



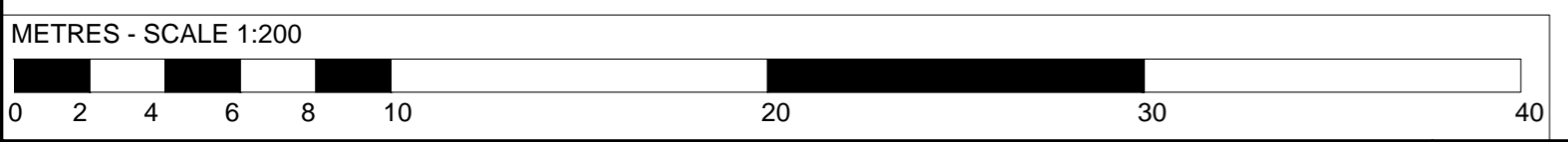
REAR ELEVATION



LEFT ELEVATION



RIGHT ELEVATION



BAKER BARNETT LIMITED
 DRAWING APPROVED BY: NSB
 ISSUE: FOR TOWN & COUNTRY PLANNING APPROVAL
 DATE: 26/07/2017

Rev	Date	By	Details
-	18/07/2017	KHS	ORIGINAL DRAWING



©Copyright. This drawing has been prepared for Mercia Power Response Limited by Baker Barnett Limited. The plant information, process details and system design shown on this drawing is confidential to and belongs to Mercia Power Response Limited. The drawing must not be reproduced in whole or part without the prior written approval of Mercia Power Response Limited or their agents Baker Barnett Limited.

Project: PROPOSED BACK-UP POWER GENERATION FACILITY ON LAND OFF GRAPHITE WAY, HADFIELD, GLOSSOP, DERBYSHIRE SK13 1QH

Client: MERCIA POWER RESPONSE LIMITED

Title: PROPOSED SITE ELEVATIONS

Scale: 1:200
 Size: A2
 Drg No: 16-2620-204

PLEASE CONTACT BAKER BARNETT LIMITED ON 01246 276868 IMMEDIATELY IF THIS DRAWING HAS NOT BEEN APPROVED FOR ISSUE. IF THIS DRAWING HAS NOT BEEN SIGNED, BAKER BARNETT LIMITED WILL ACCEPT NO LIABILITY FOR ITS USE.