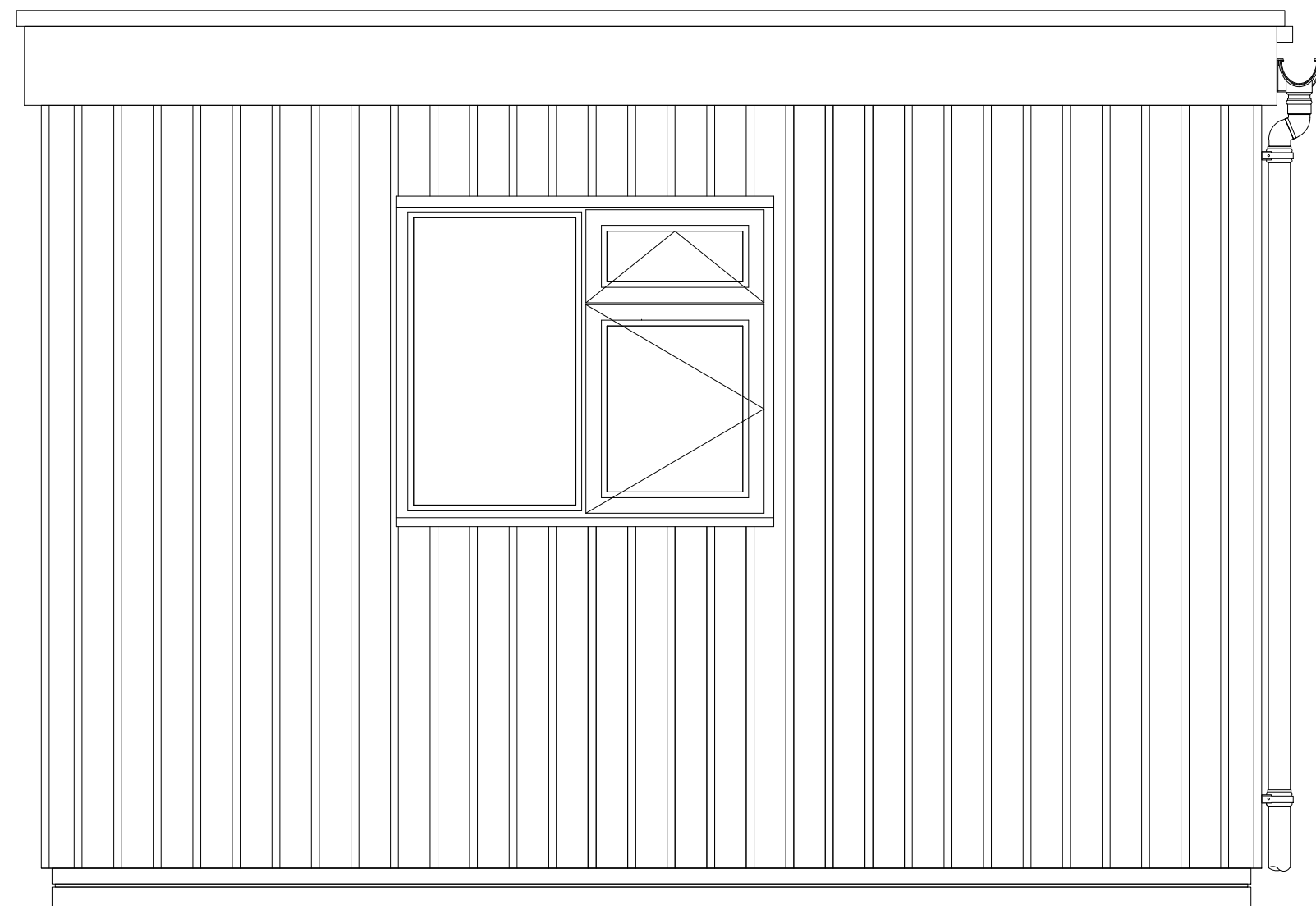
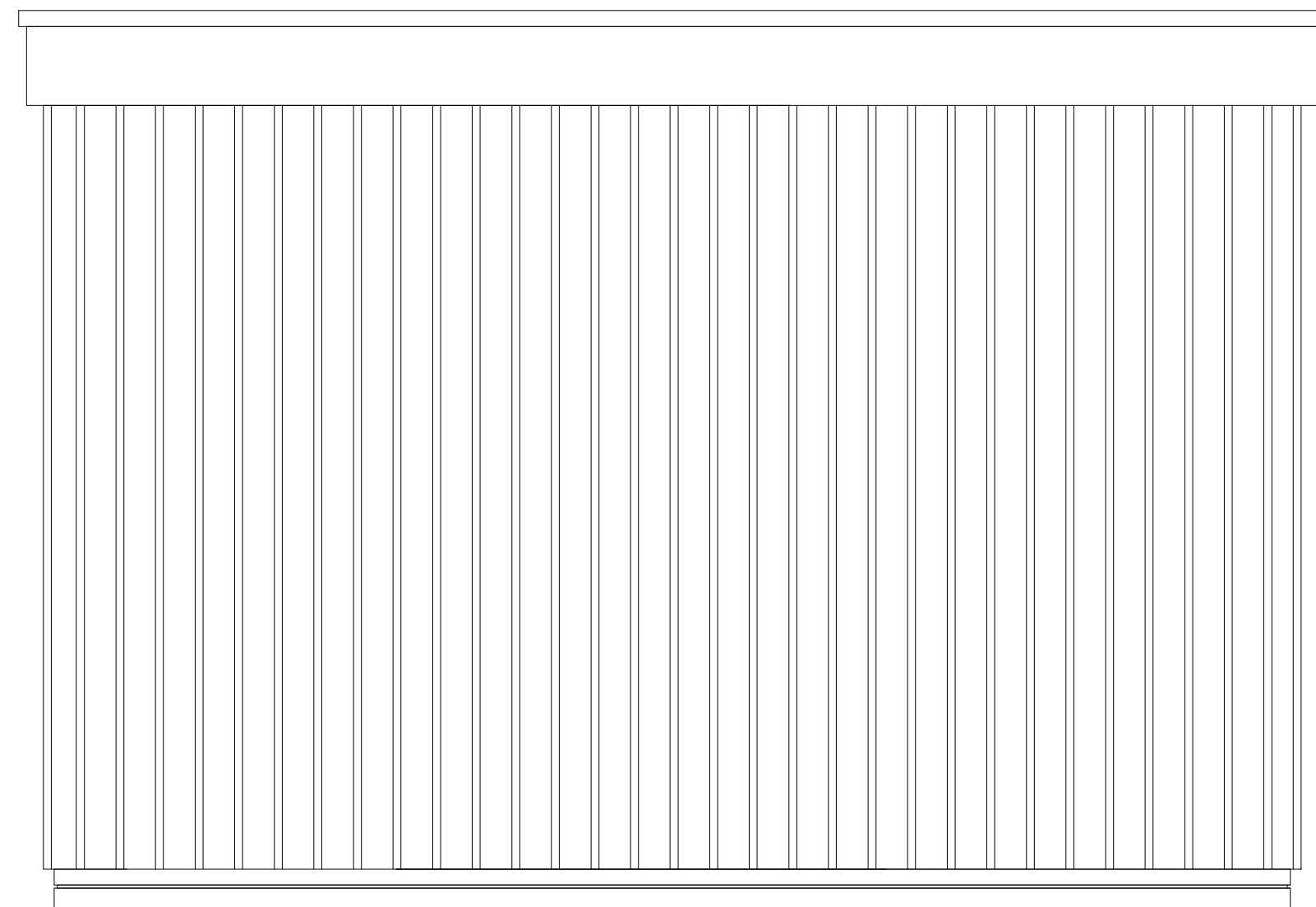


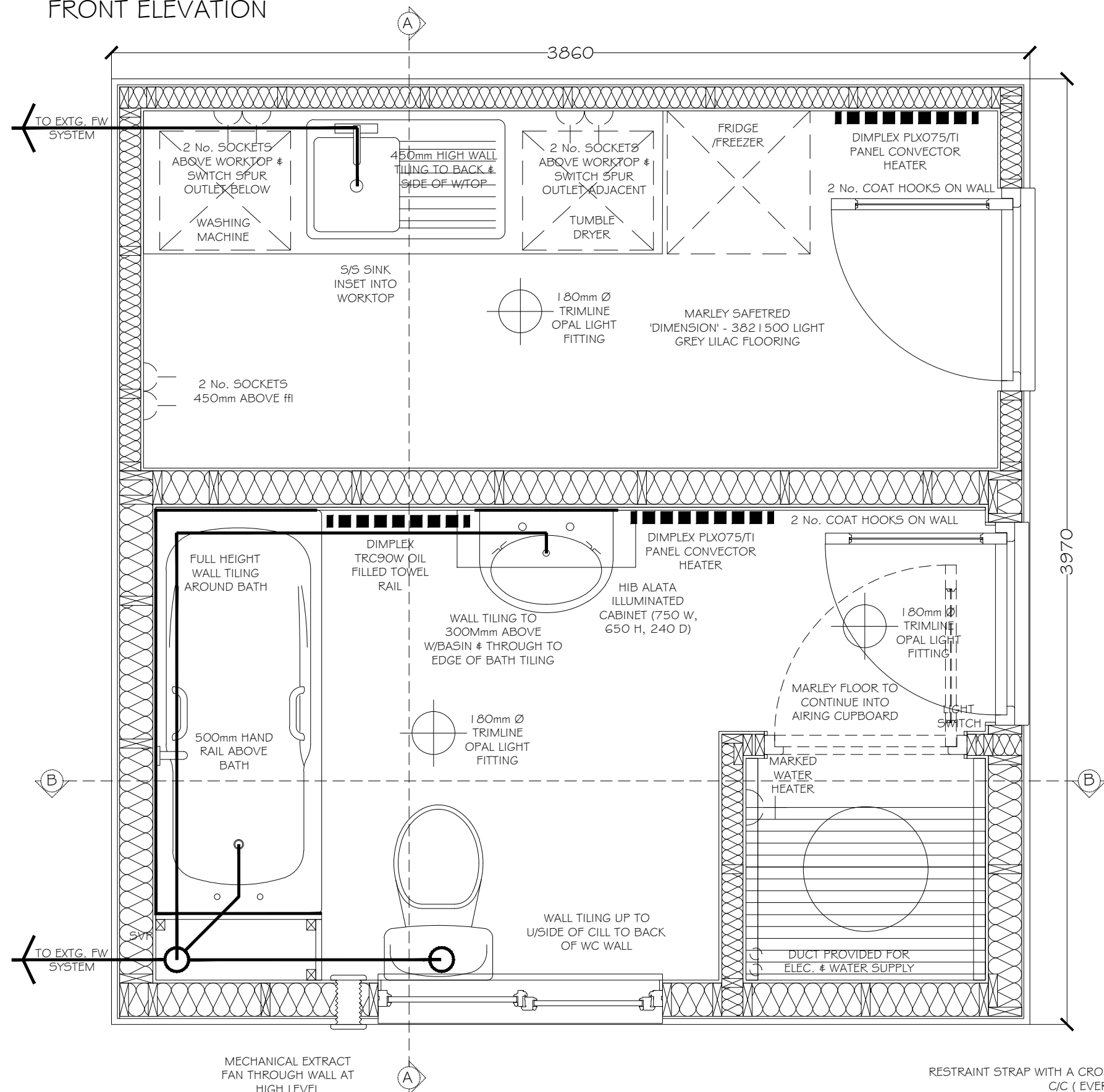
FRONT ELEVATION



SIDE ELEVATION

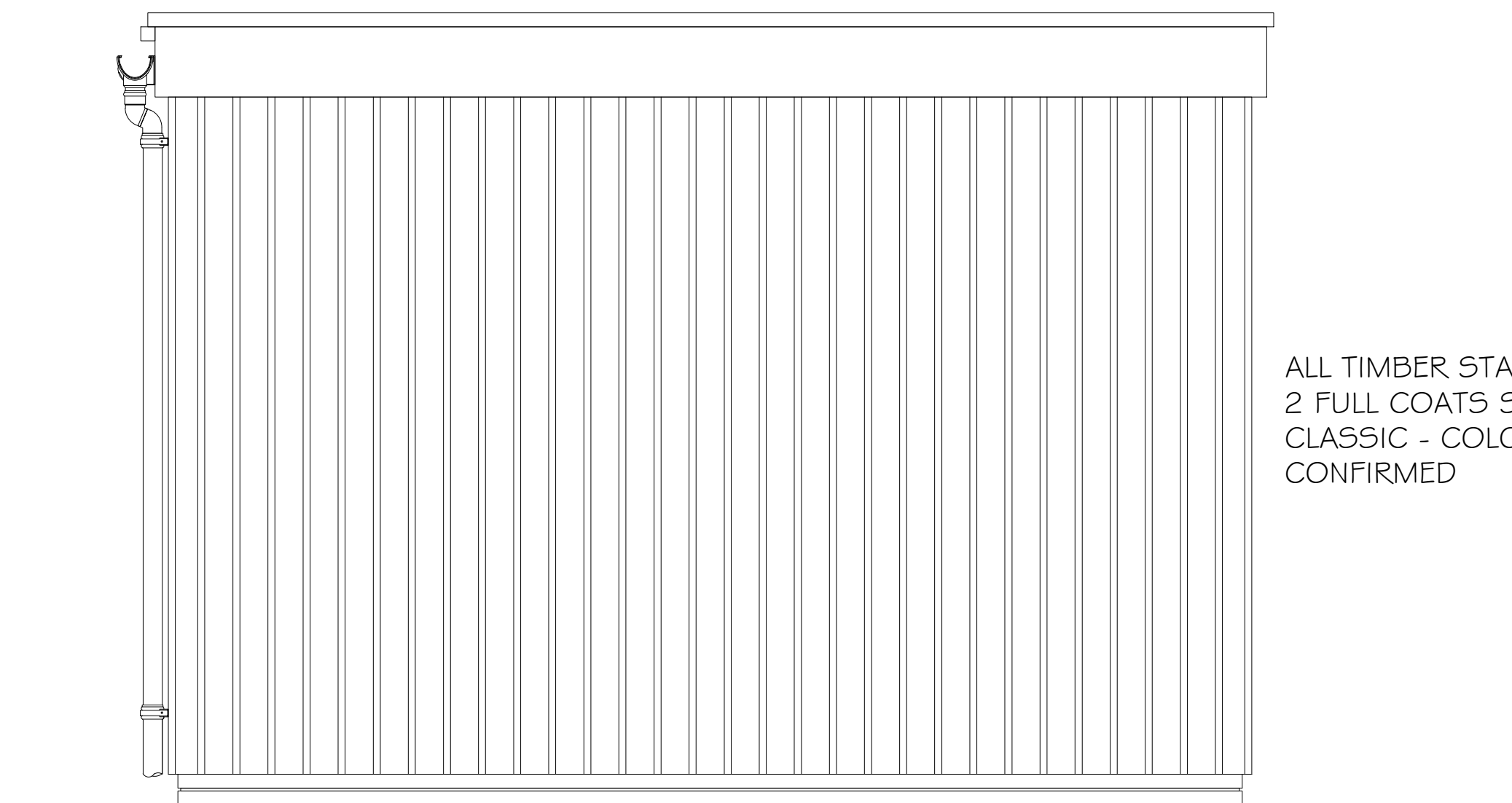


REAR ELEVATION



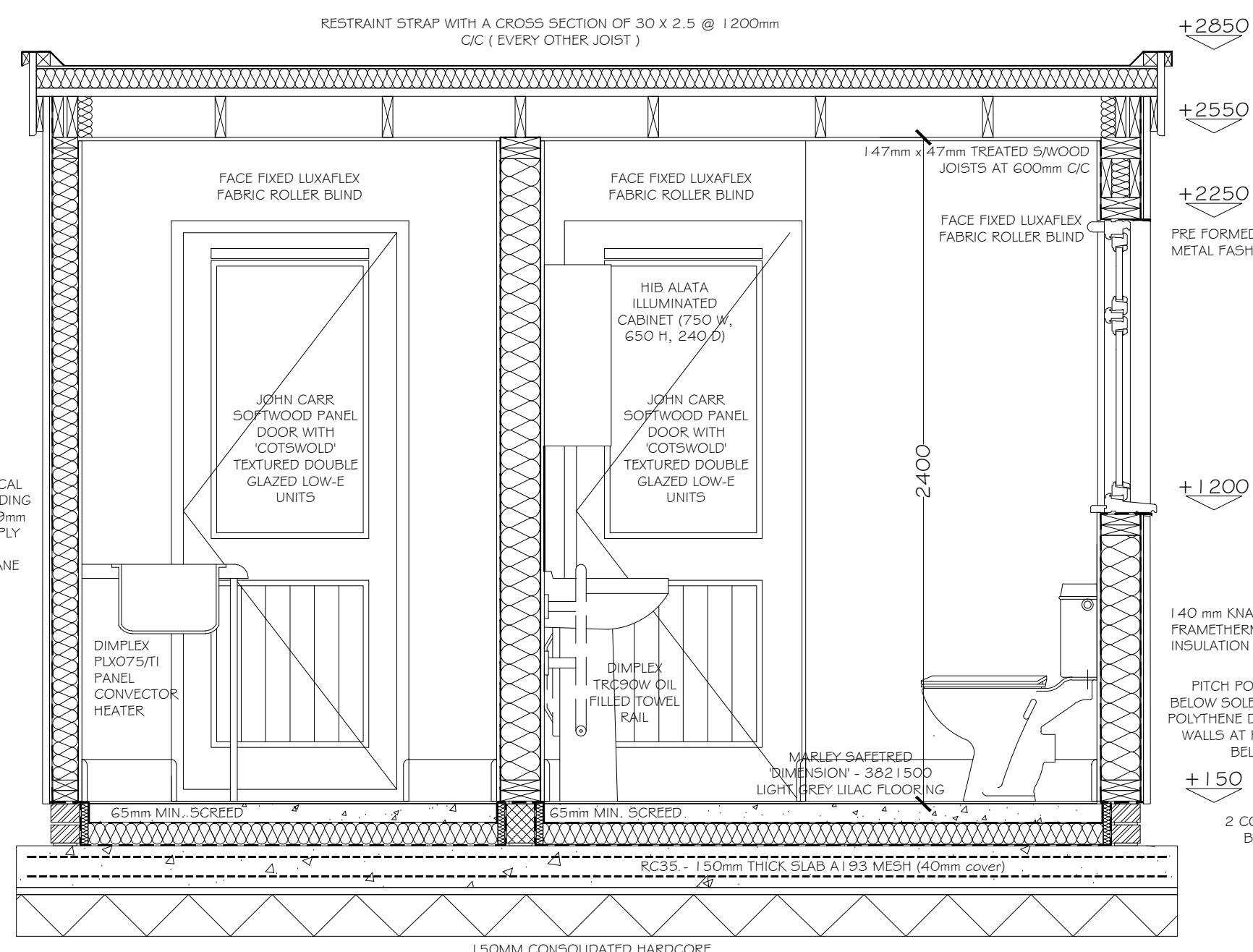
BATHROOM SPEC:

WHB:  
Armitage Shanks 'Sandnningham Royale' 560mm x 410mm  
2 tap hole & chainstay hole - S2170  
'Ova' pedestal - S2955(O1)  
Pair Sandnningham21 washbasin pillar taps, lever handles - B9881(AA)  
Waste, plug & chain - S8800(AA)  
WC:  
Armitage Shanks 'Sandnningham' WC Suite - E2910(O1)  
Cistern - S3927(O1)  
Orion seat & cover - S4045(O1)  
'Domex' screws - S9101(O1)  
BATH:  
Armitage Shanks 'Sandnningham' 1700mm 2 tap hole bath with chrome handgrips - S1593(O1)  
'Uniline' front panel - E4130(O1)  
'Sandnningham 21' bath shower mixer lever tap - B9884(AA)  
Handspray holder - B9908(AA)  
Waste, plug, chain & overflow - S8830(AA)  
SHOWER:  
Rada 'Exact' shower control for connection to concealed pipework. Complete with a Mira Response Power handset, hose, clamp bracket, soap dish, slide bar, hose retaining ring.  
EXTRACTION:  
Vent-Axia Silhouette 150XT  
Single speed 150mm fan with integral adjustable electronic overrun timer (up to 30 mins), neon running light and electric backdraught shutter.  
Ref. No. 45 40 GO  
DOOR FURNITURE  
For each external door:  
1.5 butts per door  
5 level sash lock and handle  
brass escutcheon  
Airing cupboard door:  
1.5 butts per door  
roller catch  
external pull handle

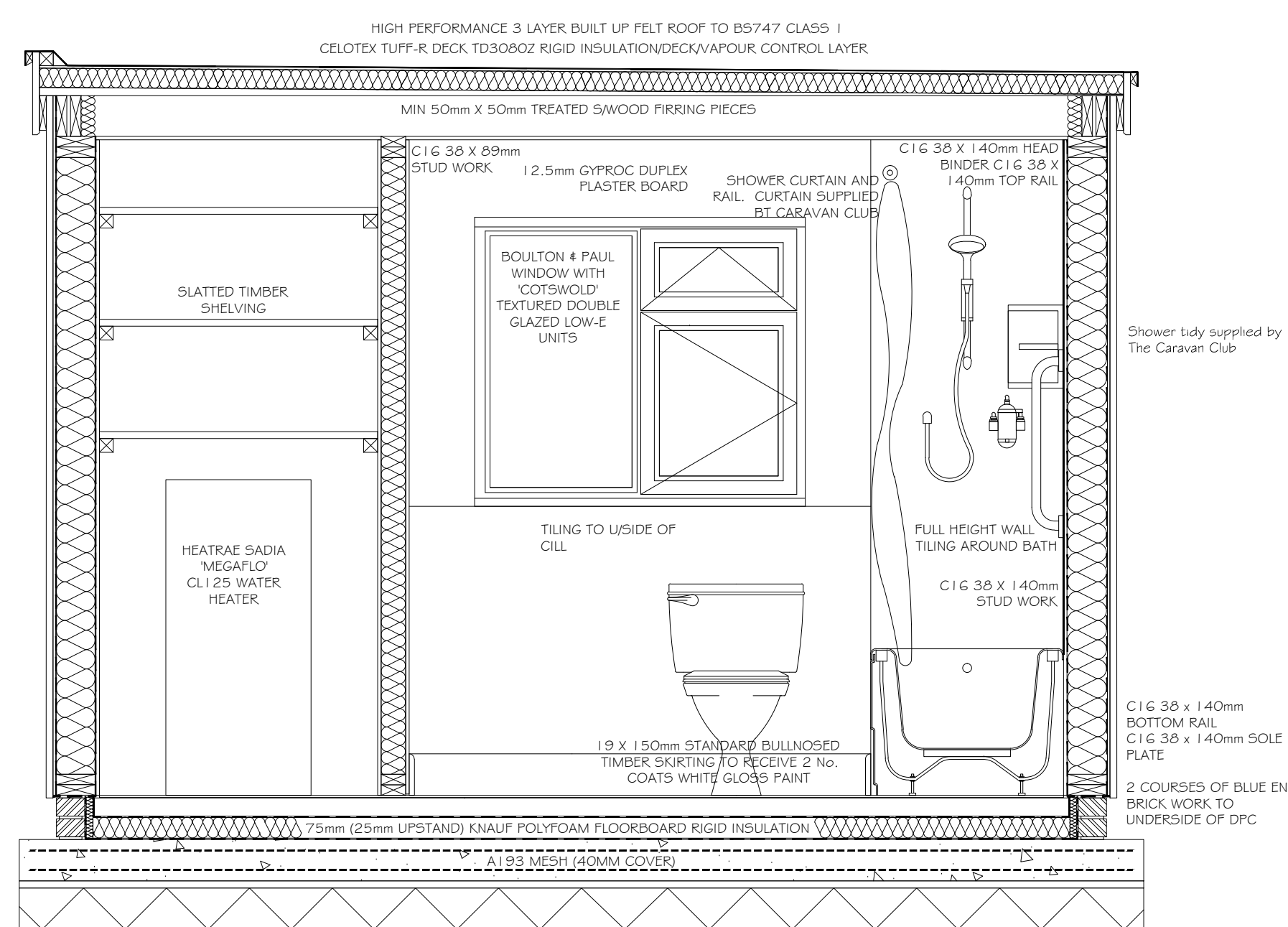


SIDE ELEVATION

ALL TIMBER STAINED WITH  
2 FULL COATS SADOLIN  
CLASSIC - COLOUR TO BE  
CONFIRMED



SECTION 'A' - 'A'



SECTION 'B' - 'B'

This drawing is the copyright of The Caravan Club Limited and may not be reproduced in whole or in part without its express permission. Whilst information contained in this drawing is provided in good faith, being based on available records and where applicable, electro detection techniques in location of underground electrical & telephonic services, The Caravan Club Limited will not be held responsible for errors in or omissions from the information shown. Contractors and other parties must satisfy themselves as to the accuracy and completeness of the information shown, to determine the existence of services which might cause danger, be damaged or need replacement in connection with their engagement.

Revisions			

Do not scale

Project/Site  
BUXTON (GRIN LOW)

Title  
ASSISTANT WARDENS  
BATHROOM & KITCHEN POD

Drwg no.  
GRL-2016-P-435

Date  
NOV 16

Drwn. by  
ASM

Scale  
1/20

CAD Ref  
GRL-2016-P-435



Estates Department, East Grinstead House  
East Grinstead, West Sussex, RH19 1UA.  
Tel. (01342) 336772  
Fax. (01342) 327653