

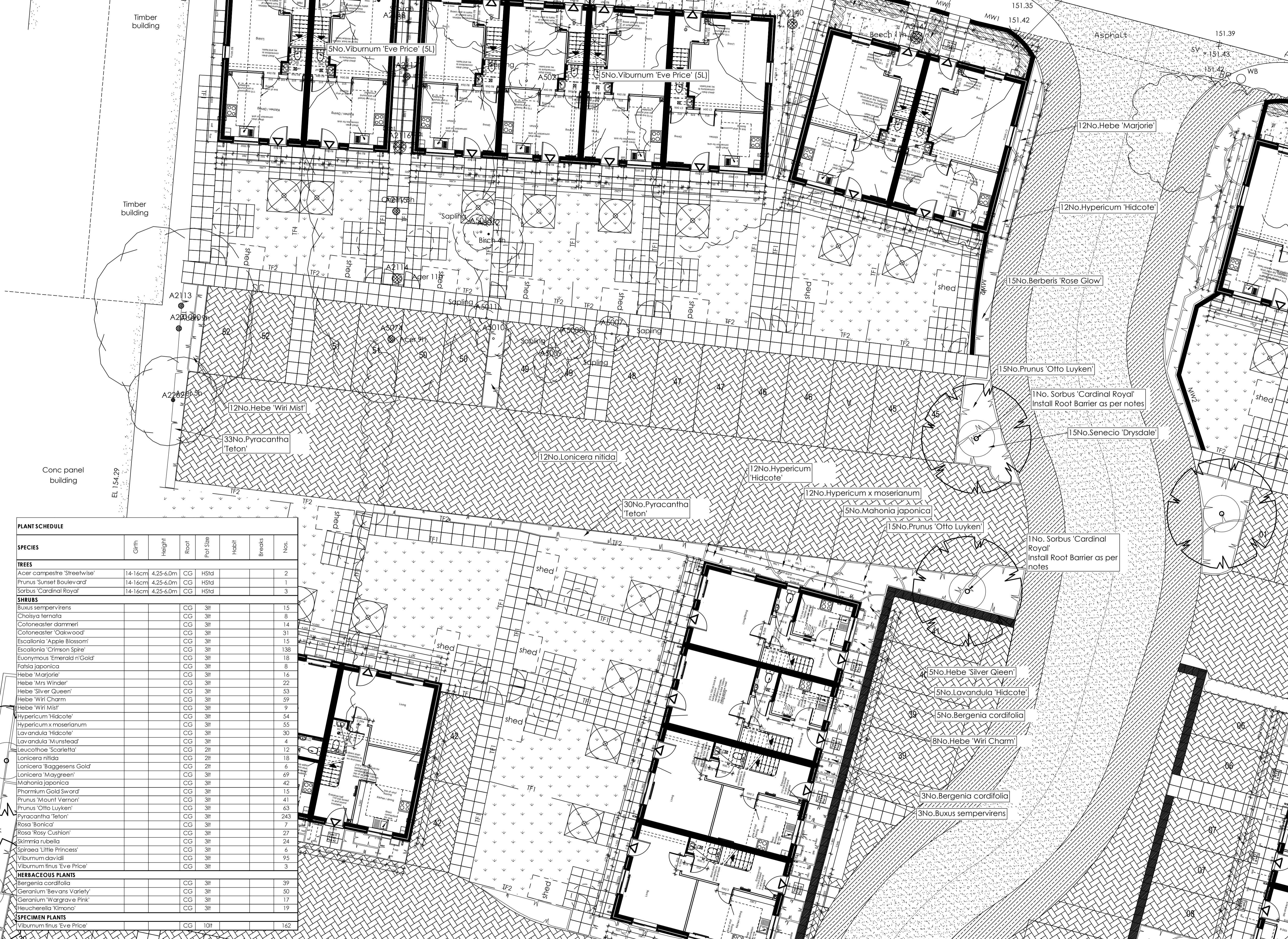
Notes
 All soft landscape works to be carried out in accordance with BS4428:1989 Code of Practice for General Landscape Operations.
 All new tree planting shall comply with BS4043:1989 Transplanting root-balled trees and BS3936:1992 Nursery Stock Part 1. Specification for Trees and Shrubs.
 Follow good modern horticultural practice in any proposed soft landscaping

The copyright to this drawing belongs to Ian Stemp Landscape Associates and shall not be reproduced without their written consent. Do not scale from this drawing.

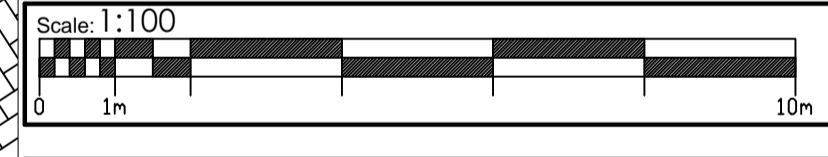
KEY & NOTATION

Proposed Tree Planting (General)
 The excavated hole shall be of sufficient size to accommodate the root-ball or container, allowing approximately 500mm clearance. Before planting the sides of the pit shall be broken up and the base dug over to a depth of 150mm to improve drainage. The tree will be planted to the same depth as it was in the nursery. Backfill will be firmed in around the rootball to prevent any air pockets. The pit shall be backfilled with a % mix of good quality topsoil and an on peat based compost. 140gms of Enmag granular slow-release fertiliser shall be incorporated to the fill mixture.
Trees in soft ground
 Trees shall be double staked and fixed to horizontal crossbar using rubber strapping, with rubber block positioned between the tree and cross bar. Stakes shall be 60mm diameter treated softwood, driven firmly into ground either side, and not through the rootball, with tree central between the stakes. The above ground height of the stake should be a minimum of a third of the stem high. All trees to receive perforated watering pipes surrounding root ball.
Tree Aftercare
 Any necessary formative pruning will be carried out and where appropriate woodchip/bark mulch applied to a depth of 75mm, and to at least the edge of the planting pit. A properly planned maintenance programme should be kept up until successful establishment of the trees. This may include watering when necessary, checking of the support systems, weed control and further mulching.
Root Barriers
 Where an installed rootball is within 3m of an existing underground service route or within 2m of rear of pavement, install protective root barrier with sides vertical and finished 75mm below finished ground level. To be Greenleaf ReRoot 2000 or similar approved.

Proposed Areas of Shrub Planting
 Shrub areas to have minimum 450mm depth of good quality imported cultivated topsoil, free from bricks, large stones and other rubbish. MycorForce Transplanter shall be spread around the roots of each plant during planting at a rate specified by the supplier. Tel: English Woodlands Burrow Nursery 01435 862992.
All shrub areas shall have 75mm depth Melcourt Ornamental Bark Mulch, (or similar approved).
Grass Turf
 To be good quality treated meadow turf, laid in staggered rows with joints butted up. Prepare 150mm clean topsoil free of builders rubbish and other objects over 15mm in size.
Ornamental Hedge
 Refer to shrub planting specification above. Ensure all plants are bushy to provide jointing up length of hedge. Trim all hedges to 600mm at planting to promote new growth.
Gold Gravel Mulch
 20mm Golden Pea Gravel over Weed preventative membrane



PLANT SCHEDULE							
SPECIES	Grth	Height	Root	Pool Size	Habit	Breaks	Nos.
TREES							
Acer campestre 'Streetwise'	14-16cm	4.25-6.0m	CG	HStd			2
Prunus 'Sunset Boulevard'	14-16cm	4.25-6.0m	CG	HStd			1
Sorbus 'Cardinal Royal'	14-16cm	4.25-6.0m	CG	HStd			3
SHRUBS							
Buxus sempervirens	CG	3ft					15
Cholysa ternata	CG	3ft					8
Coloneaster dammeri	CG	3ft					14
Coloneaster 'Oakwood'	CG	3ft					31
Escallonia 'Apple Blossom'	CG	3ft					15
Escallonia 'Crimson Spike'	CG	3ft					138
Euonymus 'Emerald n'Gold'	CG	3ft					18
Fatsia japonica	CG	3ft					8
Hebe 'Marjorie'	CG	3ft					16
Hebe 'Mrs Winder'	CG	3ft					22
Hebe 'Silver Queen'	CG	3ft					53
Hebe 'Wiri Charm'	CG	3ft					59
Hebe 'Wiri Mist'	CG	3ft					9
Hypericum 'Hidcote'	CG	3ft					54
Hypericum x moserianum	CG	3ft					55
Lavandula 'Hidcote'	CG	3ft					30
Lavandula 'Munstead'	CG	3ft					4
Leucothoe 'Scarletta'	CG	2ft					12
Lonicera nitida	CG	2ft					18
Lonicera 'Baggesens Gold'	CG	2ft					6
Lonicera 'Maygreen'	CG	3ft					69
Mahonia japonica	CG	3ft					42
Phorium Gold Sword	CG	3ft					15
Prunus 'Mount Vernon'	CG	3ft					41
Prunus 'Otto Luyken'	CG	3ft					63
Pyracantha 'Teton'	CG	3ft					243
Rosa 'Barica'	CG	3ft					7
Rosa 'Rosy Cushion'	CG	3ft					27
Skimmia rubella	CG	3ft					24
Spiraea 'Little Princess'	CG	3ft					6
Viburnum davidii	CG	3ft					95
Viburnum tinus 'Eve Price'	CG	3ft					3
HERBACEOUS PLANTS							
Bergenia cordifolia	CG	3ft					39
Geranium 'Bevans Variety'	CG	3ft					50
Geranium 'Wargrave Pink'	CG	3ft					17
Heuchera 'Kimono'	CG	3ft					19
SPECIMEN PLANTS							
Viburnum tinus 'Eve Price'	CG	10ft					162



A	1.	Tree added adj. bay 45	cjn	14.03.17
Revisions			Dwn.	Date

Project
 Proposed Development at Surrey Street, Glossop

Drawing Landscape Proposals Plots 40 to 52			
Status For Planning, Tender & Construction			
Date 29.09.2016	Revision A	Drawn Cjn	Checked Cjn
Dwg No. 16.1268.004			