

Advice : HSL-170131151753-381 DO NOT ADVISE AGAINST

Your Ref: D807 - Pre-application advice following on from meeting 24/01/17

Development Name: Land off Buxton Road, Whaley Bridge - Site Plan dated 26/01/2017

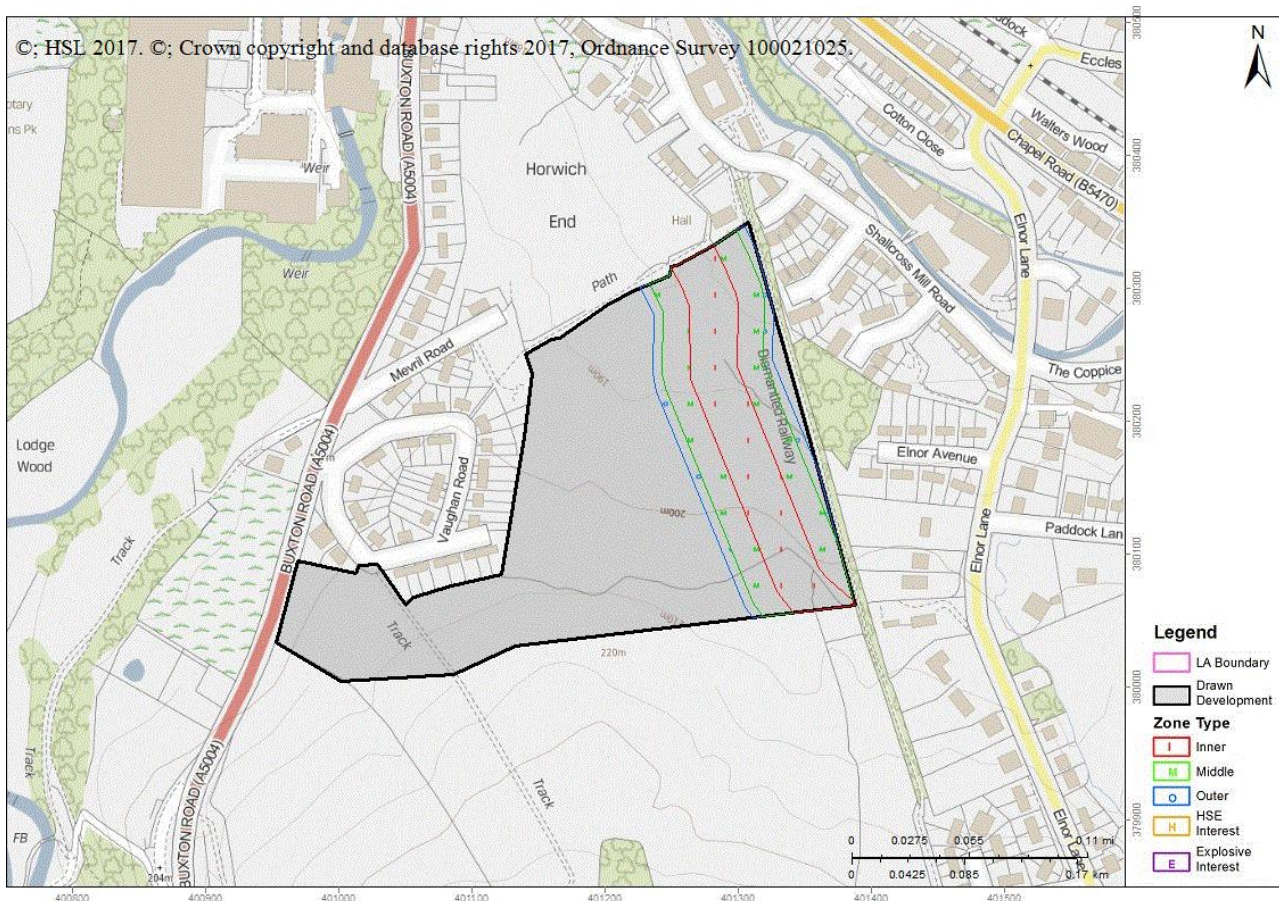
Local Authority Reference:

Comments:

Land Use Planning Consultation with Health and Safety Executive [Town and Country Planning (Development Management Procedure) (England) Order 2015, Town and Country Planning (Development Management Procedure) (Wales) Order 2012, or Town and Country Planning (Development Management Procedure) (Scotland) Regulations 2013]

The Health and Safety Executive (HSE) is a statutory consultee for certain developments within the Consultation Distance of Major Hazard Sites/ pipelines. This consultation, which is for such a development and is within at least one Consultation Distance, has been considered using HSE's planning advice web app, based on the details input on behalf of HSL.

HSE's Advice: Do Not Advise Against, consequently, HSE does not advise, on safety grounds, against the granting of planning permission in this case.

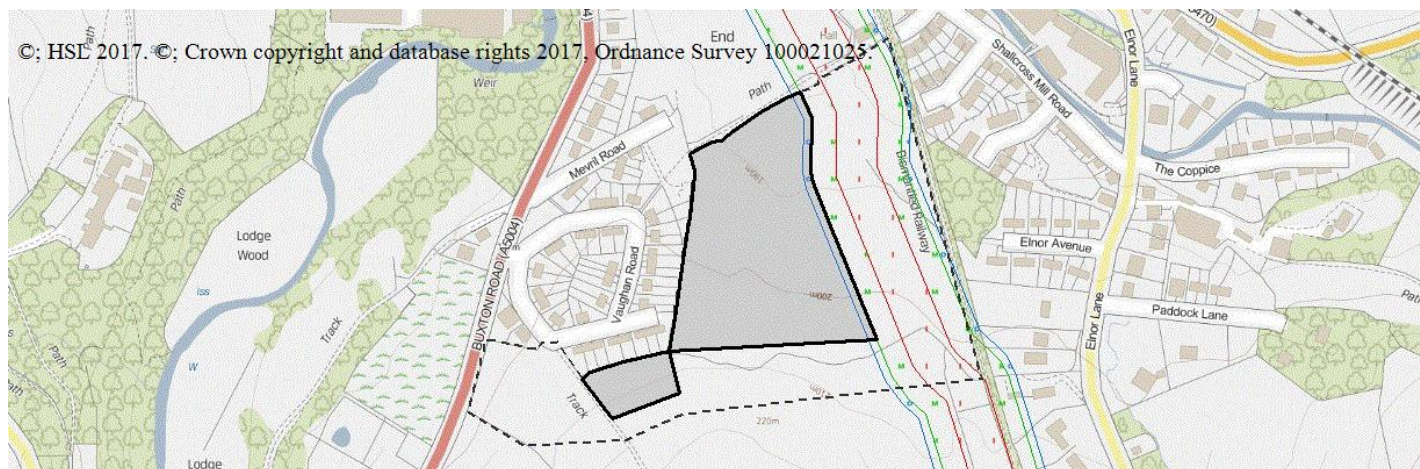


Commercial In Confidence

Breakdown:

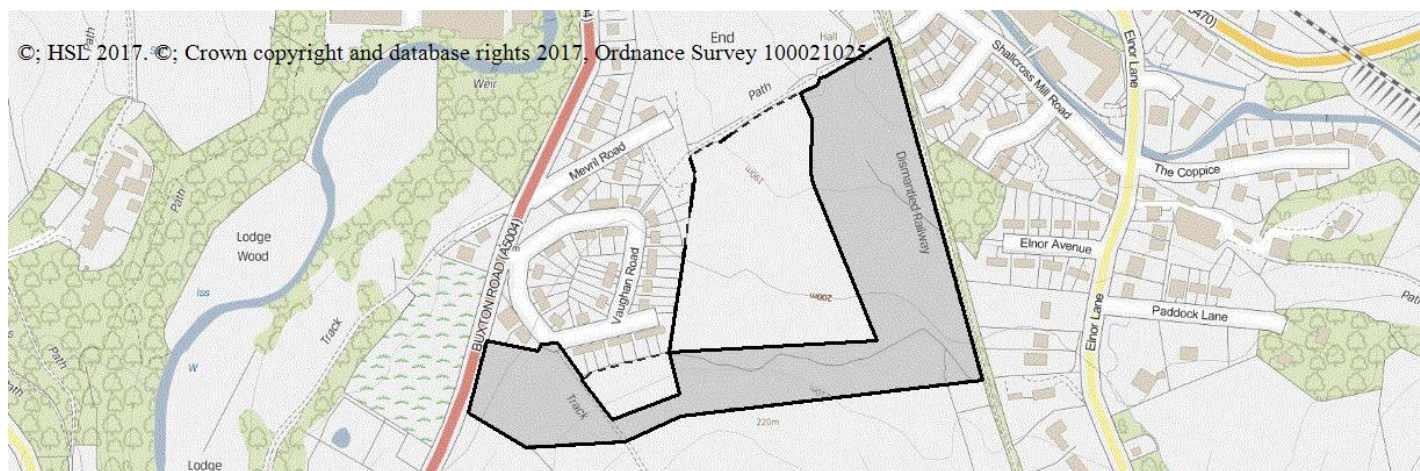
Housing DAA

How many dwelling units are there (that lie partly or wholly within a consultation distance)? More than 30



Landscaping DAA

There are no questions for landscaping



Pipelines

6743_1028 National Grid Gas PLC

As the proposed development is within the Consultation Distance of a major hazard pipeline you should consider contacting the pipeline operator before deciding the case. There are two particular reasons for this:

- The operator may have a legal interest (easement, wayleave etc.) in the vicinity of the pipeline. This may restrict certain developments within a certain proximity of the pipeline.
- The standards to which the pipeline is designed and operated may restrict occupied buildings or major traffic routes within a certain proximity of the pipeline. Consequently there may be a need for the operator to modify the pipeline, or its operation, if the development proceeds.

HSE's advice is based on the situation as currently exists, our advice in this case will not be altered by the outcome of any consultation you may have with the pipeline operator.

This advice report has been generated using information supplied by Kathryn Deakin at HSL on 31 January 2017.

Note that any changes in the information concerning this development would require it to be re-submitted.