

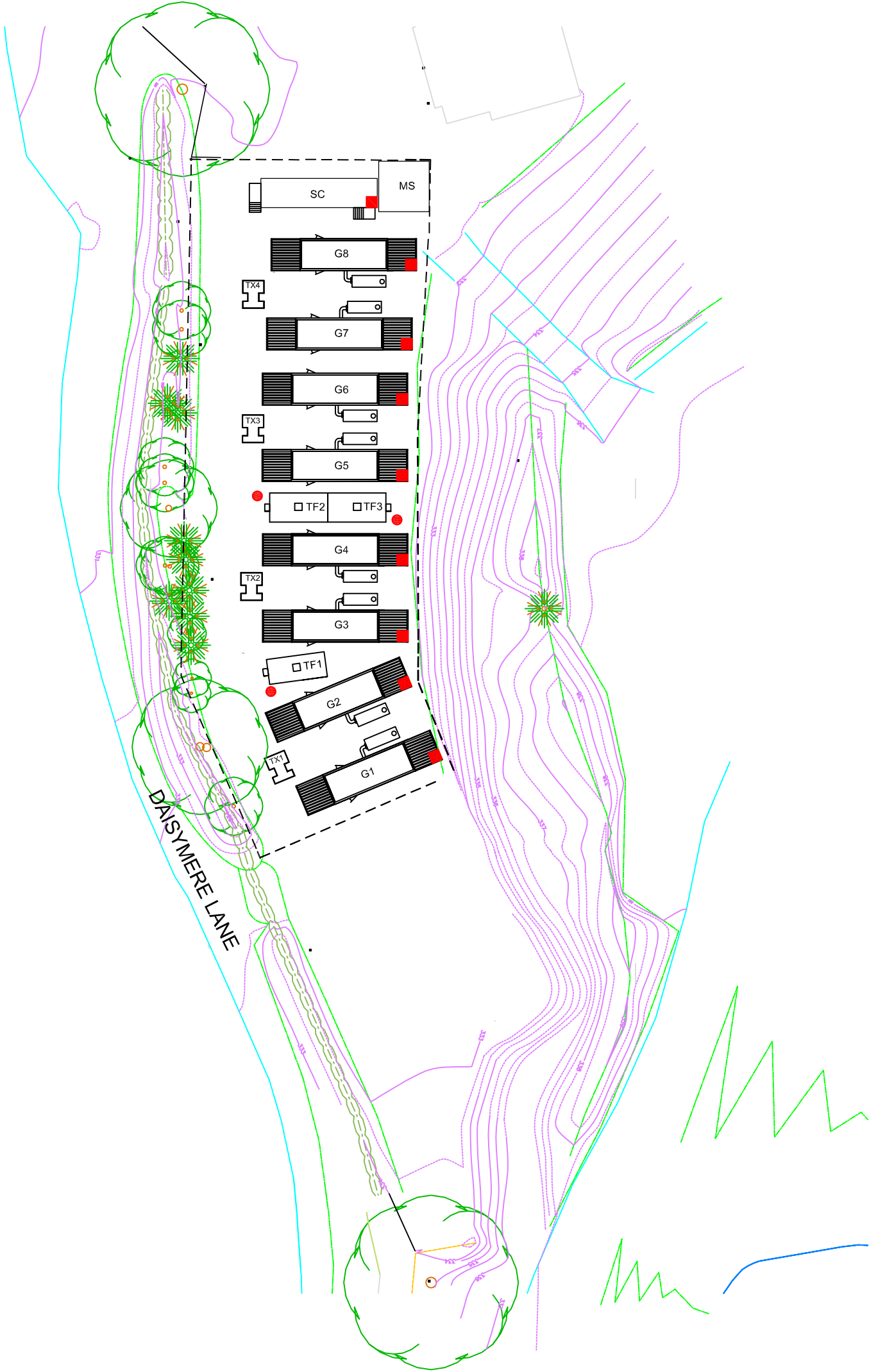
SPILL KIT INFORMATION

All Spill Kits used by Buxton Power Limited will be sourced from Lubetech Limited.

Please see www.lubetech.co.uk for specific product information.

The Spill Kits to be used on the site will be:

- **Type 14-1240** (Superior Maintenance Wheeled Bin Spill Kit - 240 Ltr. capacity). One of these Spill Kits will be located immediately adjacent to each Diesel Fuel Tank as indicated on this drawing. ●
- **Type 14-1050** (Superior Maintenance Vinyl Holdall Spill Kit). One of these Spill Kits will be located within each of the Generator Containers and one within the Switchgear Container as indicated on this drawing ■



LEGEND

Lubetech Reference
14-1240 Spill Kit



Lubetech Reference
14-1050 Spill Kit



© Crown copyright and database rights (2013) Ordnance Survey 100053186

Scale	1:500
Date	25-11-14
Drawn	CE
Checked	RPAL
Approved	RPAL

Proposed STOR Development, Waterswallows Road, Buxton.
Location of Diesel Spill Kits.

ISSUE	DATE	ISSUE	DATE	ISSUE	DATE
				A	04-11-15
			Revised layout. Issued for planning. RE/CE		

CLIENT	BUXTON POWER LTD.
DRG. No.	BP16(A)

