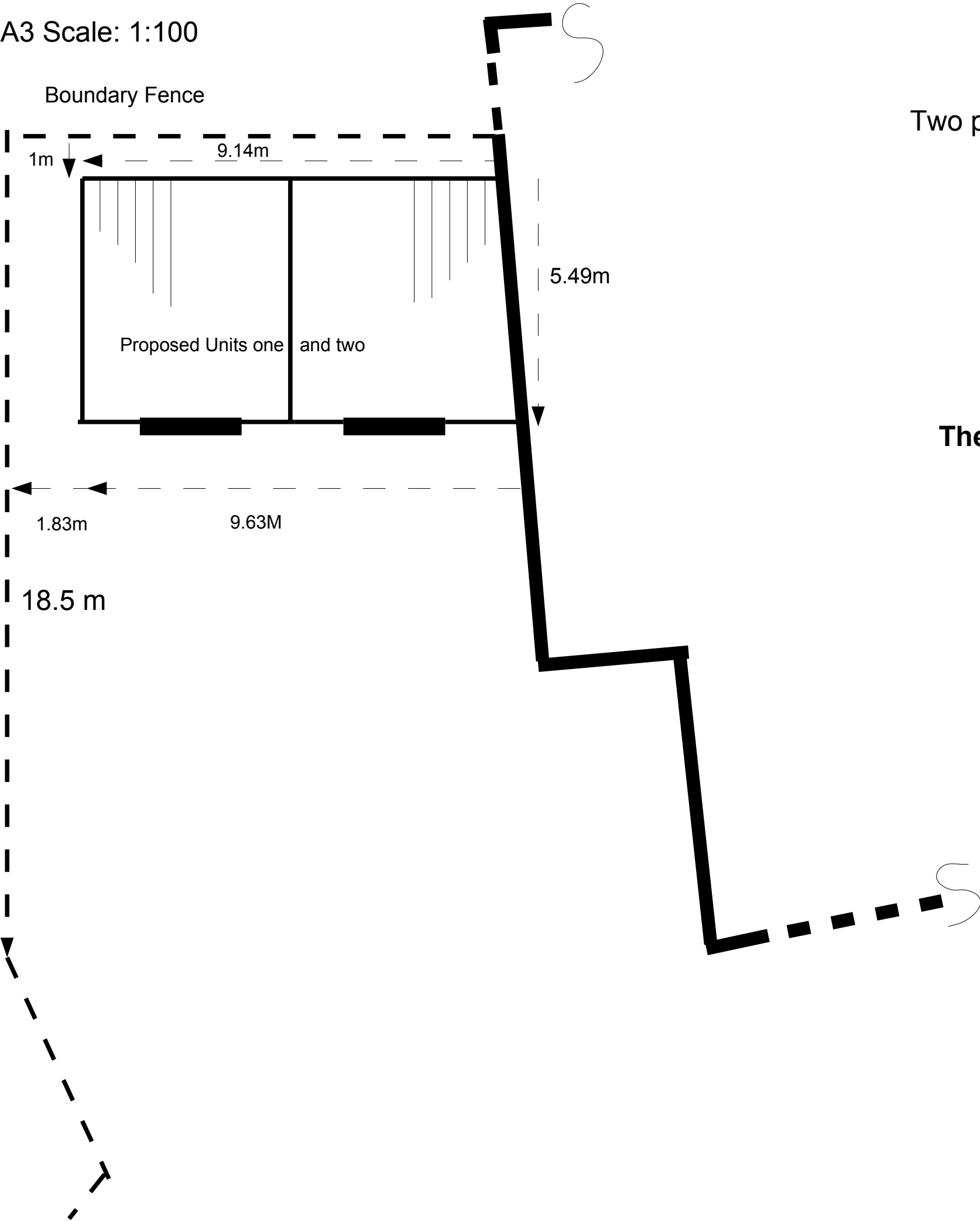
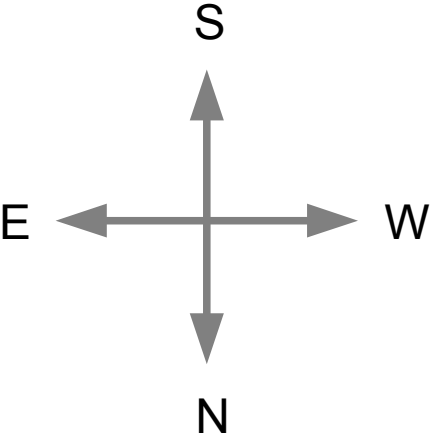


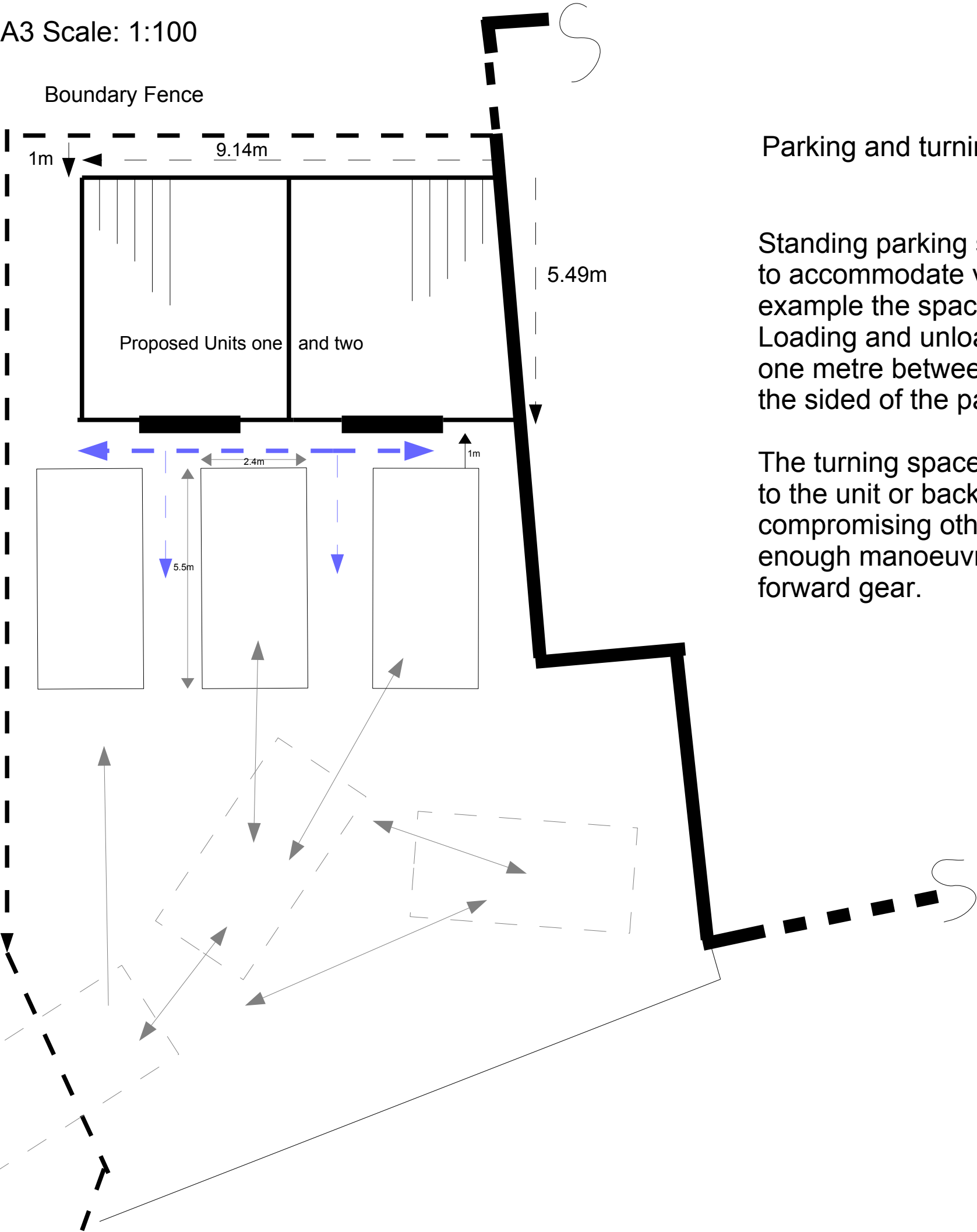
A3 Scale: 1:100



Floor plan
Two proposed new outbuildings (units)



A3 Scale: 1:100

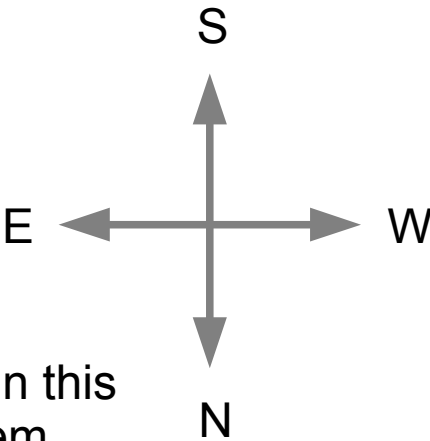


Floor plan

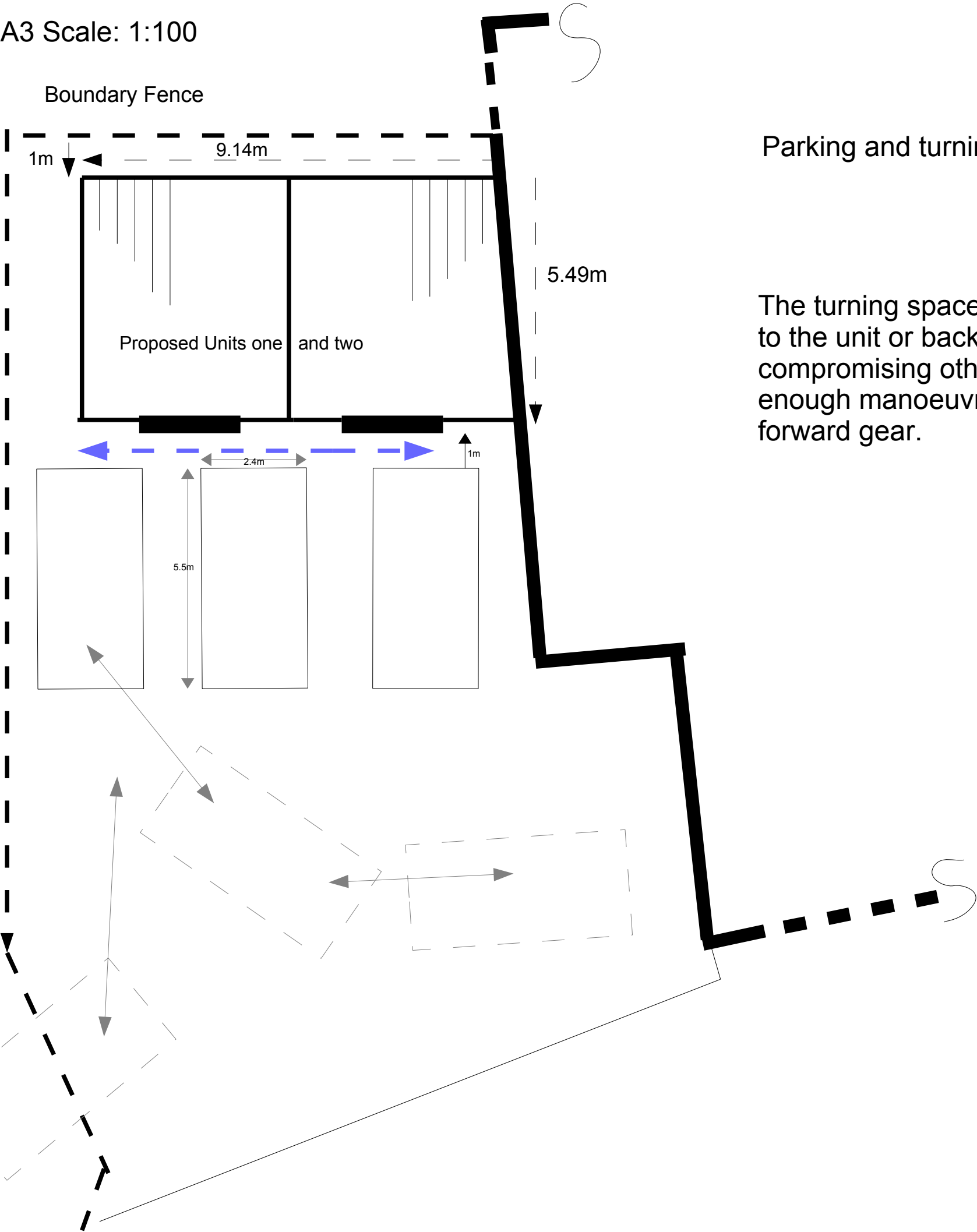
Parking and turning facilities for Units one & Two

Standing parking space is 2.4x5.5m in dimension to accommodate vans and light commercial vehicles. In this example the spaces have generous room between them. Loading and unloading space has been accommodated for with space one metre between the parking and units (**blue arrow**) and also down the sided of the parking.

The turning space can be used either to pull straight up to the unit or backed in with a two point turn (without compromising other vehicle space) and shows enough manoeuvring space to be able to exit the site in forward gear.



A3 Scale: 1:100

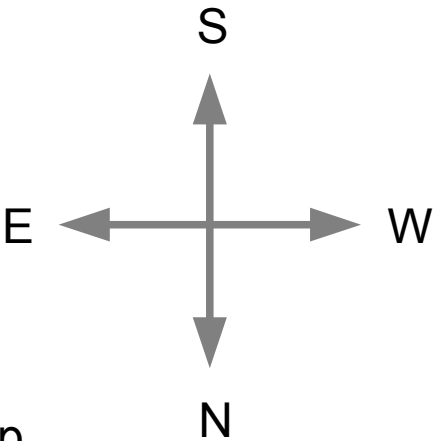


Floor plan

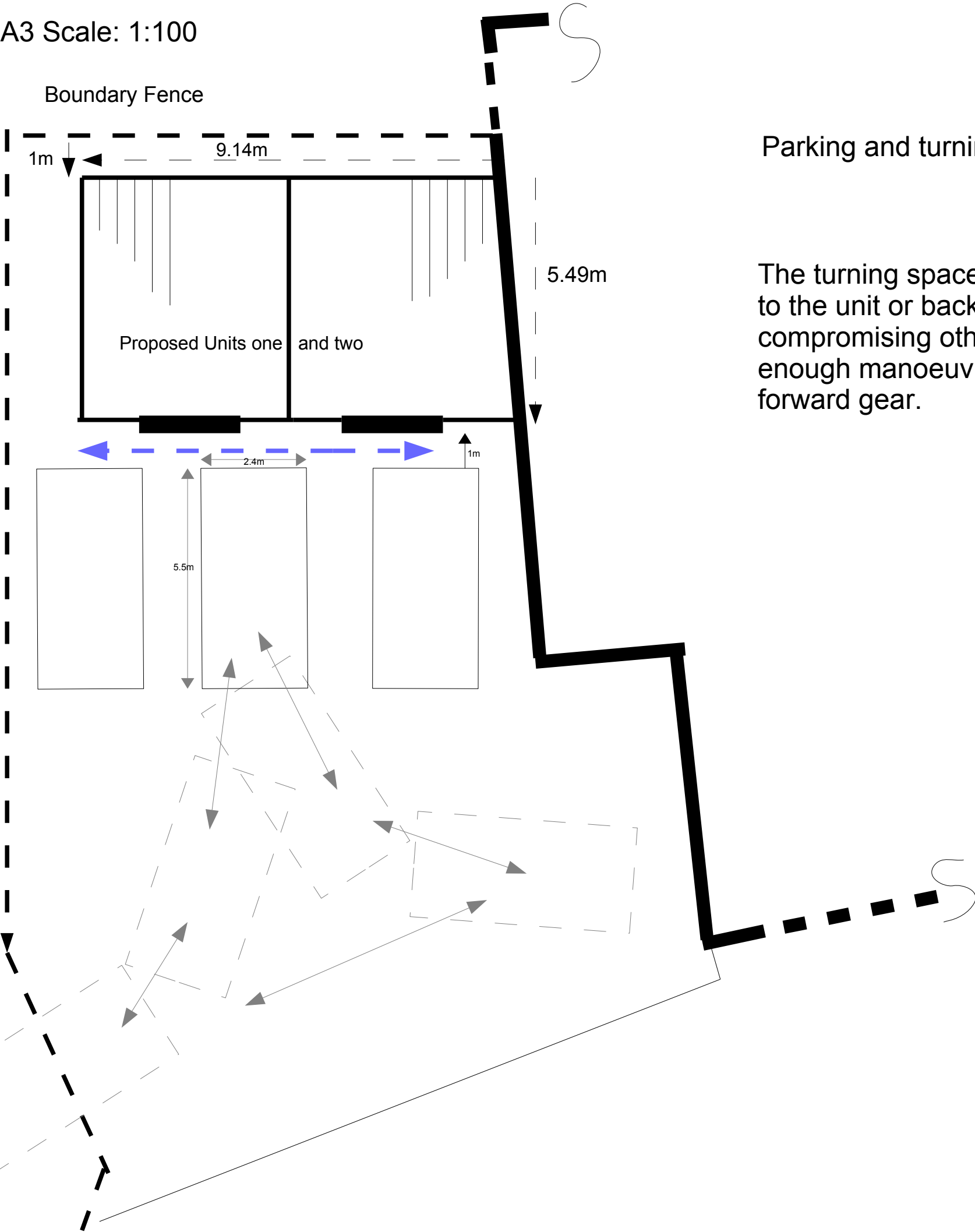
Parking and turning facilities for space one.

The turning space can be used either to pull straight up to the unit or backed in with a two point turn (without compromising other vehicle space) and shows enough manoeuvring space to be able to exit the site in forward gear.

The Factory



A3 Scale: 1:100



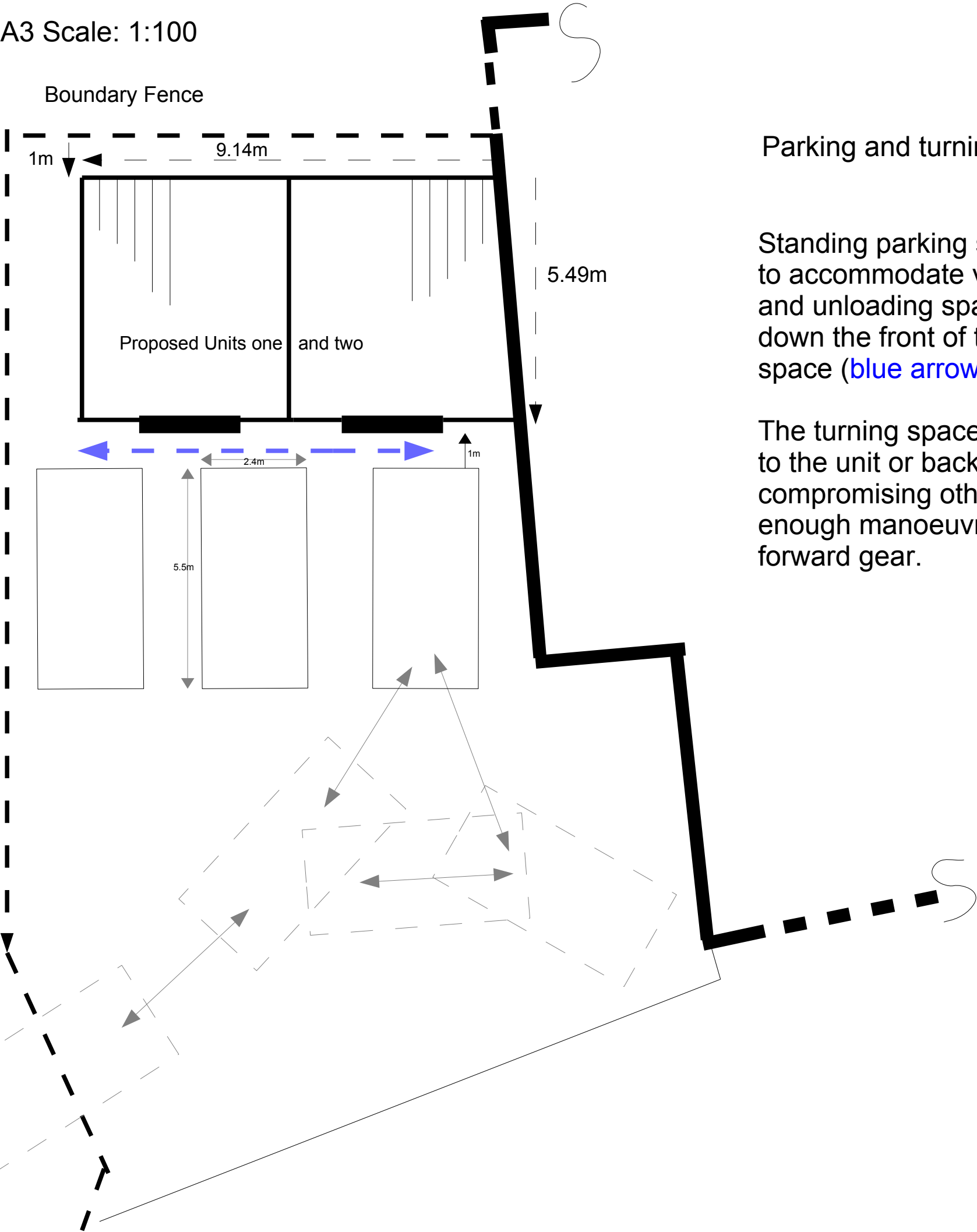
Floor plan

Parking and turning facilities for Space two

The turning space can be used either to pull straight up to the unit or backed in with a two point turn (without compromising other vehicle space) and shows enough manoeuvring space to be able to exit the site in forward gear.

The Factory

A3 Scale: 1:100



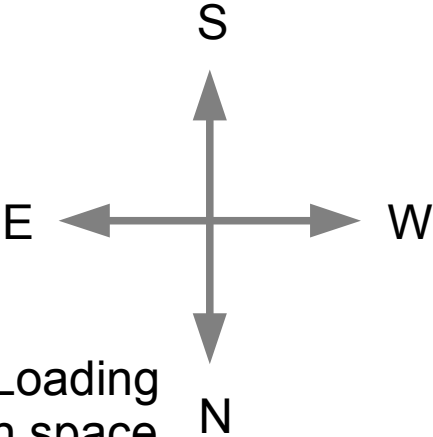
Floor plan

Parking and turning facilities for space three.

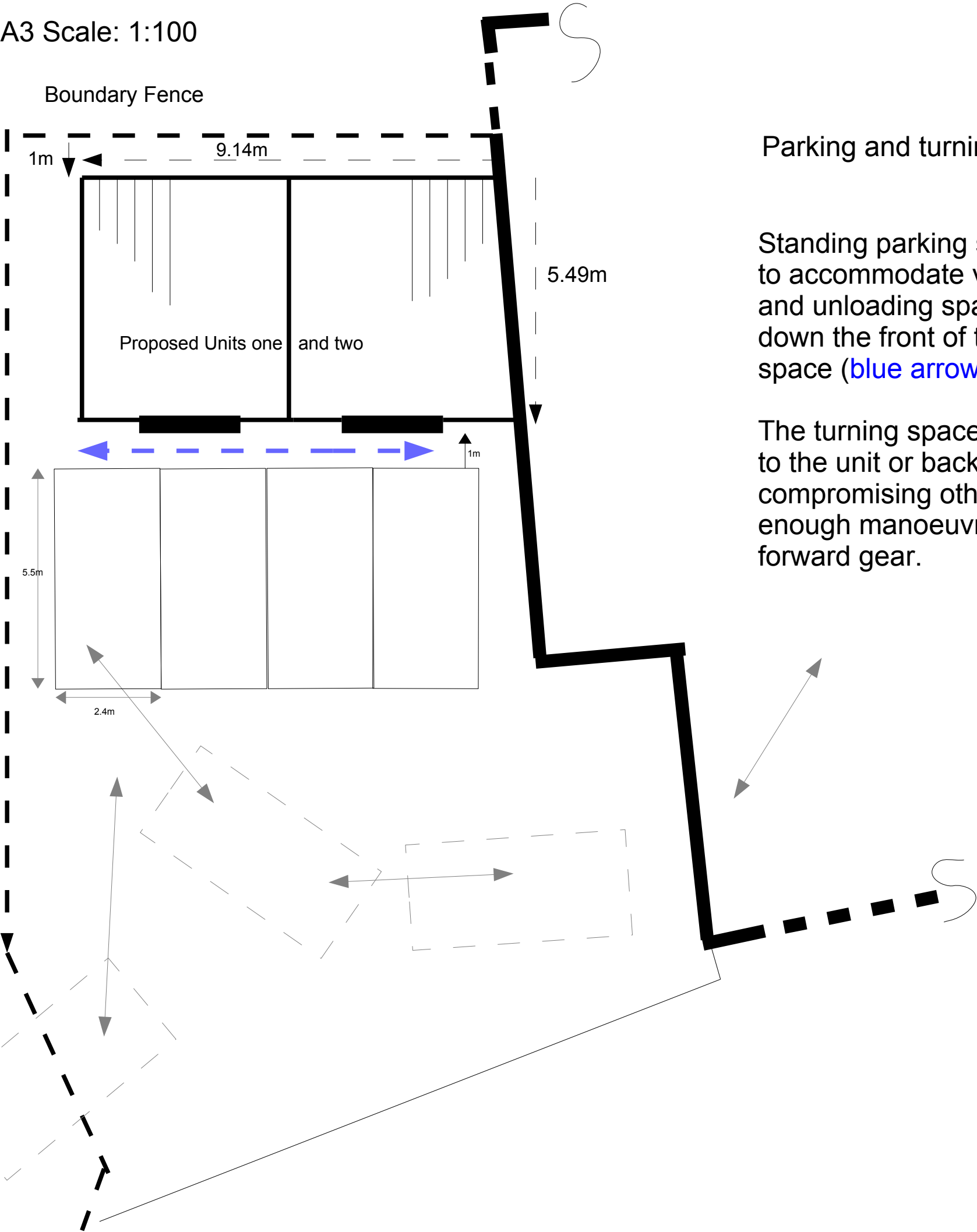
Standing parking space is 2.4x5.5m in dimension to accommodate vans and light commercial vehicles. Loading and unloading space has been accommodated for with space down the front of the units, one metre behind the parking space ([blue arrow](#)).

The turning space can be used either to pull straight up to the unit or backed in with a two point turn (without compromising other vehicle space) and shows enough manoeuvring space to be able to exit the site in forward gear.

The Factory



A3 Scale: 1:100



Floor plan

Parking and turning facilities for four vehicles

Standing parking space is 2.4x5.5m in dimension to accommodate vans and light commercial vehicles. Loading and unloading space has been accommodated for with space down the front of the units, one metre behind the parking space ([blue arrow](#)).

The turning space can be used either to pull straight up to the unit or backed in with a two point turn (without compromising other vehicle space) and shows enough manoeuvring space to be able to exit the site in forward gear.

The Factory

A3 Scale: 1:100

Floor plan

Boundary Fence

1m

9.14m

Proposed Units one and two

5.49m

Parking and turning facilities for units one & two.

Standing parking and turning space is 2.4x5.5m in dimension to accommodate vans and light commercial vehicles

The turning space can be used either to pull straight up to the unit or backed in with a two point turn (without compromising other vehicle space) and shows enough manoeuvring space to be able to exit the site in forward gear.

E

W

S

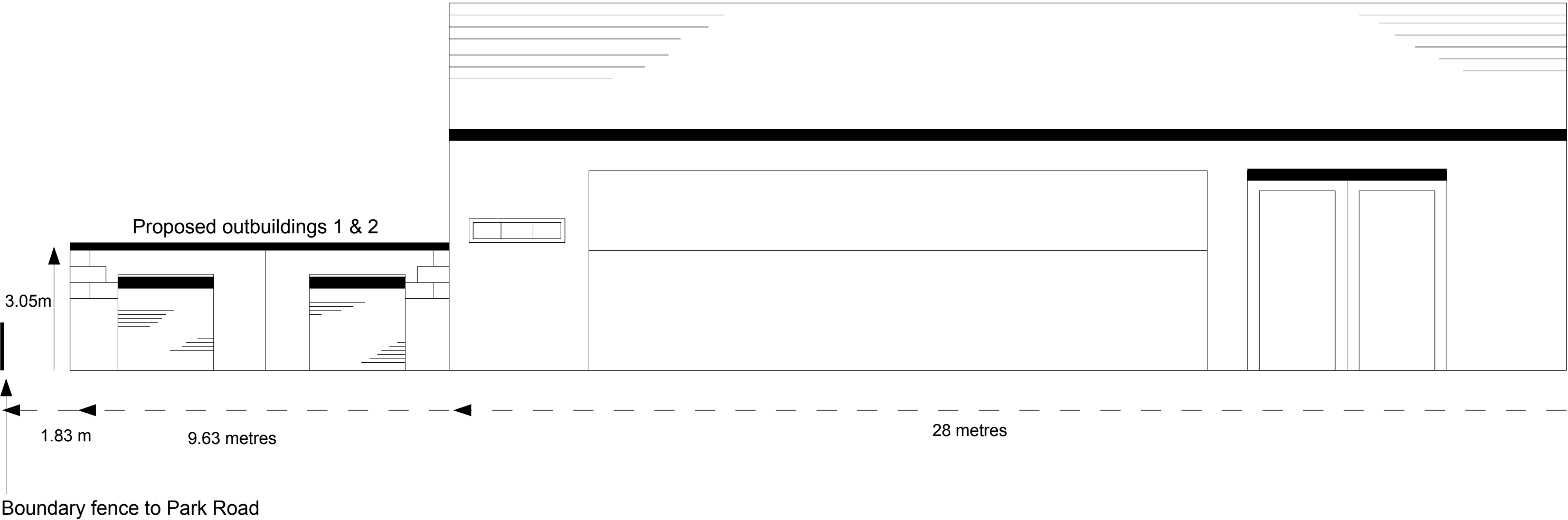
N

The Factory

A3 Scale 1:100

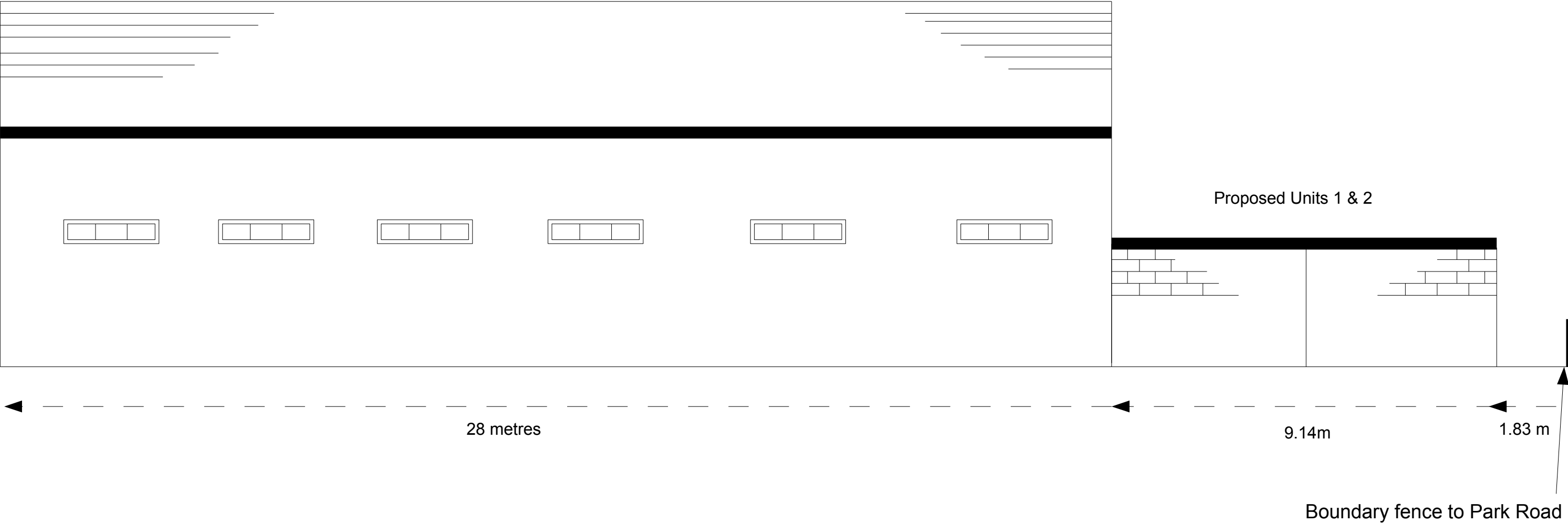
Proposed North Elevation showing just outbuildings one & two

Pictured are the units fitted with roller shutter doors.



A3 Scale 1:100

Proposed South Elevation



A3 Scale 1:100

Proposed East Elevation

