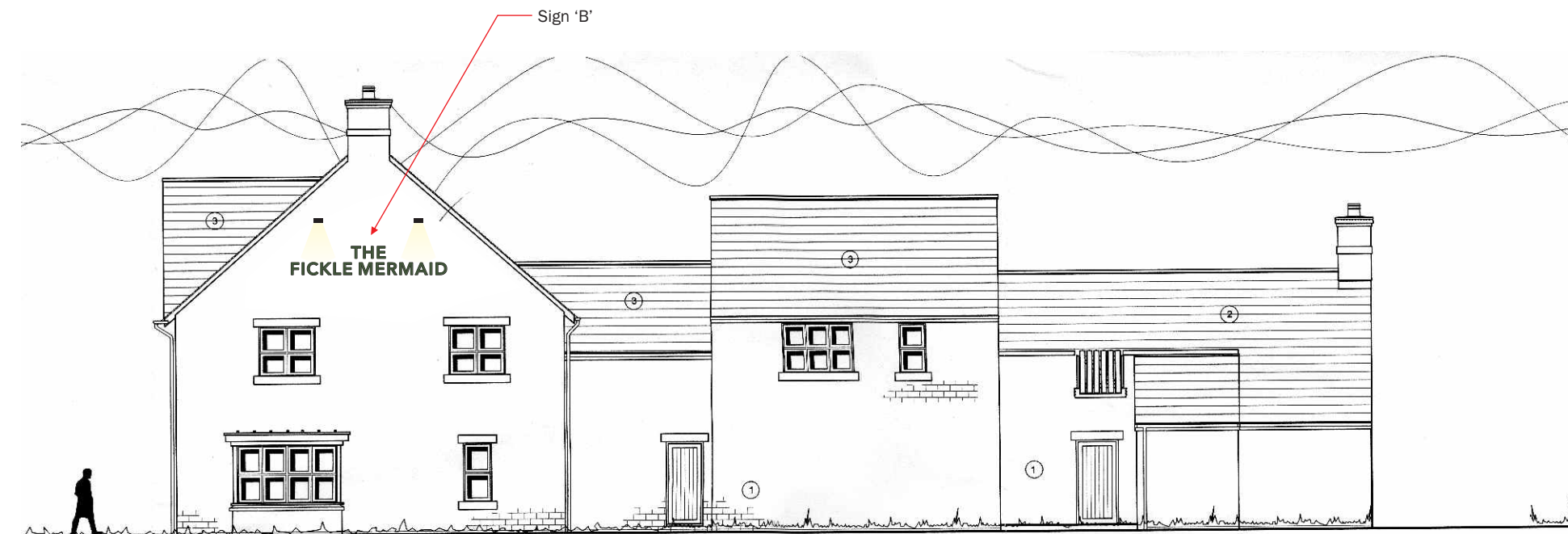
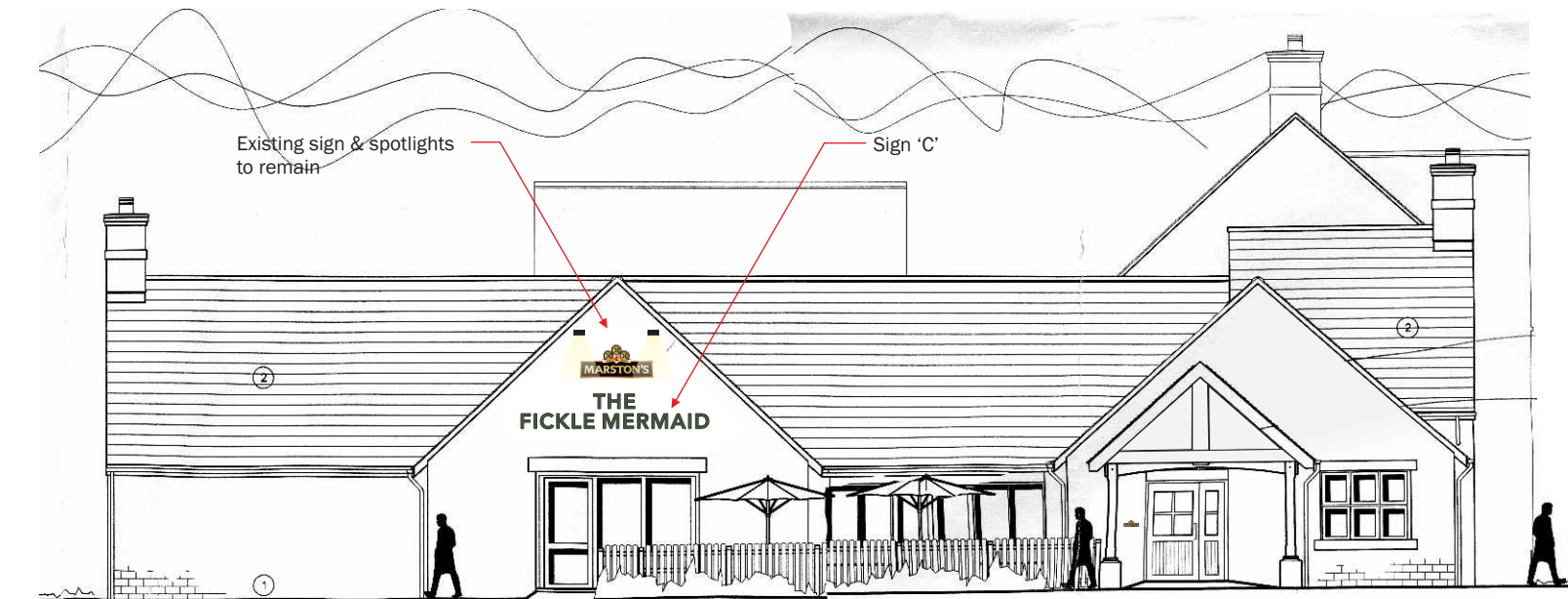




1:150 East Elevation



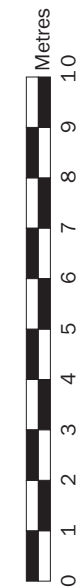
1:150 North Elevation



1:150 South Elevation



Scale 1:150 at A3 size



Sign Specialists

sign-specialists.co.uk
19 Oxleasow Road, East Moons Moat,
Redditch, B98 0RE
Telephone : 01527 504 250
Fax : 01527 504 251
enquiries@sign-specialists.co.uk

Colour reference

- Pantone 5665
- RAL 6003 - Olive Green
- RAL 6007 - Bottle Green
- RAL 1014 - Light Ivory
-

Typefaces/notes/info

-

Lighting

-

Customer

The Fickle Mermaid,
Foresters Way,
Chapel en Le Frith,
SK23 0RB.

Date drawn - 07.10.2016
Designer - P.R.S.
Location - J:\Marston's PLC

Job no - 121171/A

Rev dates	Rev dates
B) -	H) -
C) -	I) -
D) -	J) -
E) -	K) -
F) -	L) -
G) -	M) -

The designs, illustrations, and photography is the property of Sign Specialists Ltd. The contents are confidential, any form of reproduction, copying, disclosure, modification or distribution without prior written consent is strictly prohibited. Colours and typefaces on drawings may be representative only please refer to the specifications. Visuals shown are artists impressions only and must not be taken as an exact representation of the completed signage on site.



Drawing to be viewed/printed at A3

THE FICKLE MERMAID

Sign 'A'
Scale 1:25
Description - Individual letters with beveled edges (Green finish)
Materials - 25mm resin letters with painted finish
Illumination - Existing floodlights
Note: Cap height for 'T' of 'THE' = 300mm
Overall size of sign 3830mm x 710mm
Note: Ground level to underside of sign 5930mm



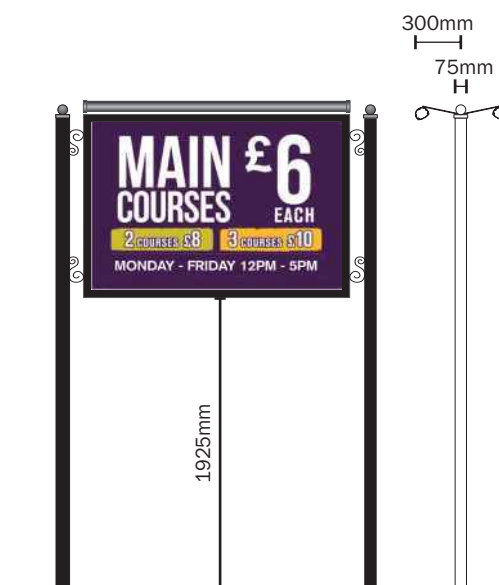
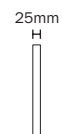
THE FICKLE MERMAID

Sign 'B'
Scale 1:25
Description - Individual letters with beveled edges (Green finish)
Materials - 25mm resin letters with painted finish
Note: Cap height for 'T' of 'THE' = 300mm
Overall size of sign 3830mm x 710mm
Note: Ground level to underside of sign 6350mm

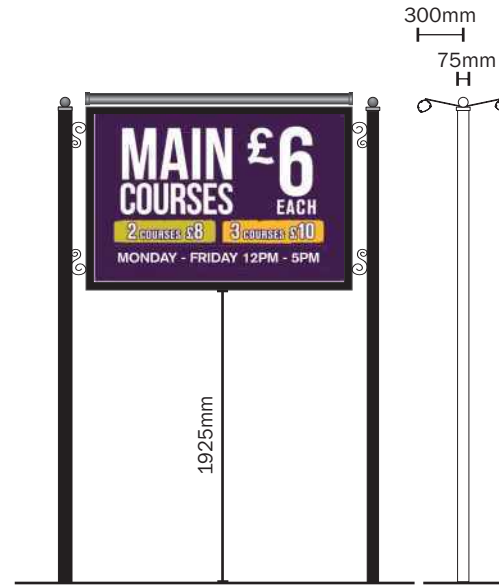


THE FICKLE MERMAID

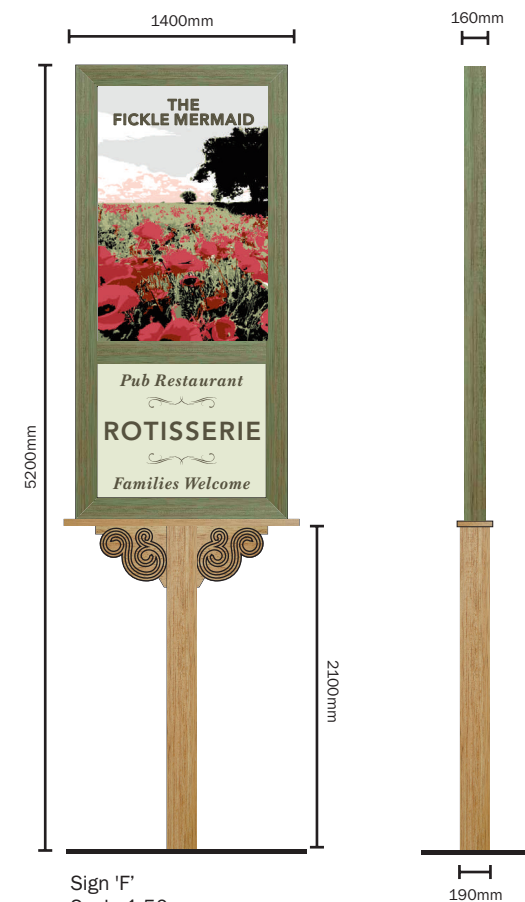
Sign 'C'
Scale 1:25
Description - Individual letters with beveled edges (Green finish)
Materials - 25mm resin letters with painted finish
Illumination - Existing floodlights
Note: Cap height for 'T' of 'THE' = 300mm
Overall size of sign 3830mm x 710mm
Note: Ground level to underside of sign 3480mm



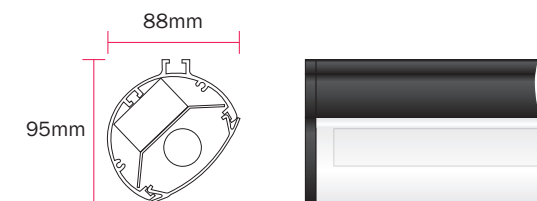
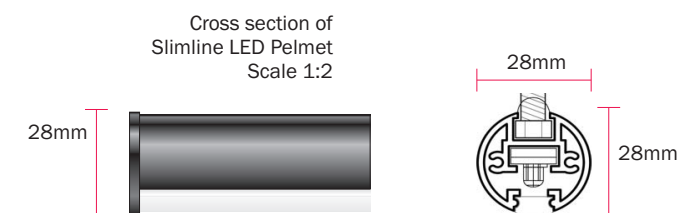
Sign 'D'
Scale 1:50
Description - Double sided twin post sign
Fitted on extended posts.
Materials - Aluminium, corex.
Illumination - Pelmet lights.
Panel size - 1,760mm x 1,210mm
O/A size 2125mm x 3210mm
Cap height of numerals = 460mm



Sign 'E'
Scale 1:50
Description - Double sided twin post sign
Fitted on extended posts.
Materials - Aluminium, corex.
Illumination - Pelmet lights.
Panel size - 1,760mm x 1,210mm
O/A size 2125mm x 3210mm
Cap height of numerals = 460mm



Sign 'F'
Scale 1:50
Description - Post sign with double sided panels.
Materials - Steel, Aluminium, timber, vinyl
Illumination - Hidden LED to edges of panels
Size as shown
Cap height for 'R' of ROTISSERIE = 120mm



Scale 1:5
Description - Cross section of Dual Aspect Light
Sizes as shown



Sign Specialists

sign-specialists.co.uk

19 Oxleasow Road, East Moons Moat,
Redditch, B98 0RE

Telephone : 01527 504 250

Fax : 01527 504 251

enquiries@sign-specialists.co.uk

Colour reference

- Pantone 5665
- RAL 6003 - Olive Green
- RAL 6007 - Bottle Green
- RAL 1014 - Light Ivory
-

Typefaces/notes/info

-

Lighting

-

Customer

The Fickle Mermaid,
Foresters Way,
Chapel en Le Frith,
SK23 0RB.

Date drawn - 07.10.2016

Designer - P.R.S.

Location - J:\Marston's PLC

Job no - 121171/A

Rev dates

- | | |
|------|------|
| B) - | H) - |
| C) - | I) - |
| D) - | J) - |
| E) - | K) - |
| F) - | L) - |
| G) - | M) - |

The designs, illustrations, and photography is the property of Sign Specialists Ltd. The contents are confidential, any form of reproduction, copying, disclosure, modification or distribution without prior written consent is strictly prohibited. Colours and typefaces on drawings may be representative only please refer to the specifications. Visuals shown are artists impressions only and must not be taken as an exact representation of the completed signage on site.



Drawing to be viewed/printed at A3