

Technical Specification

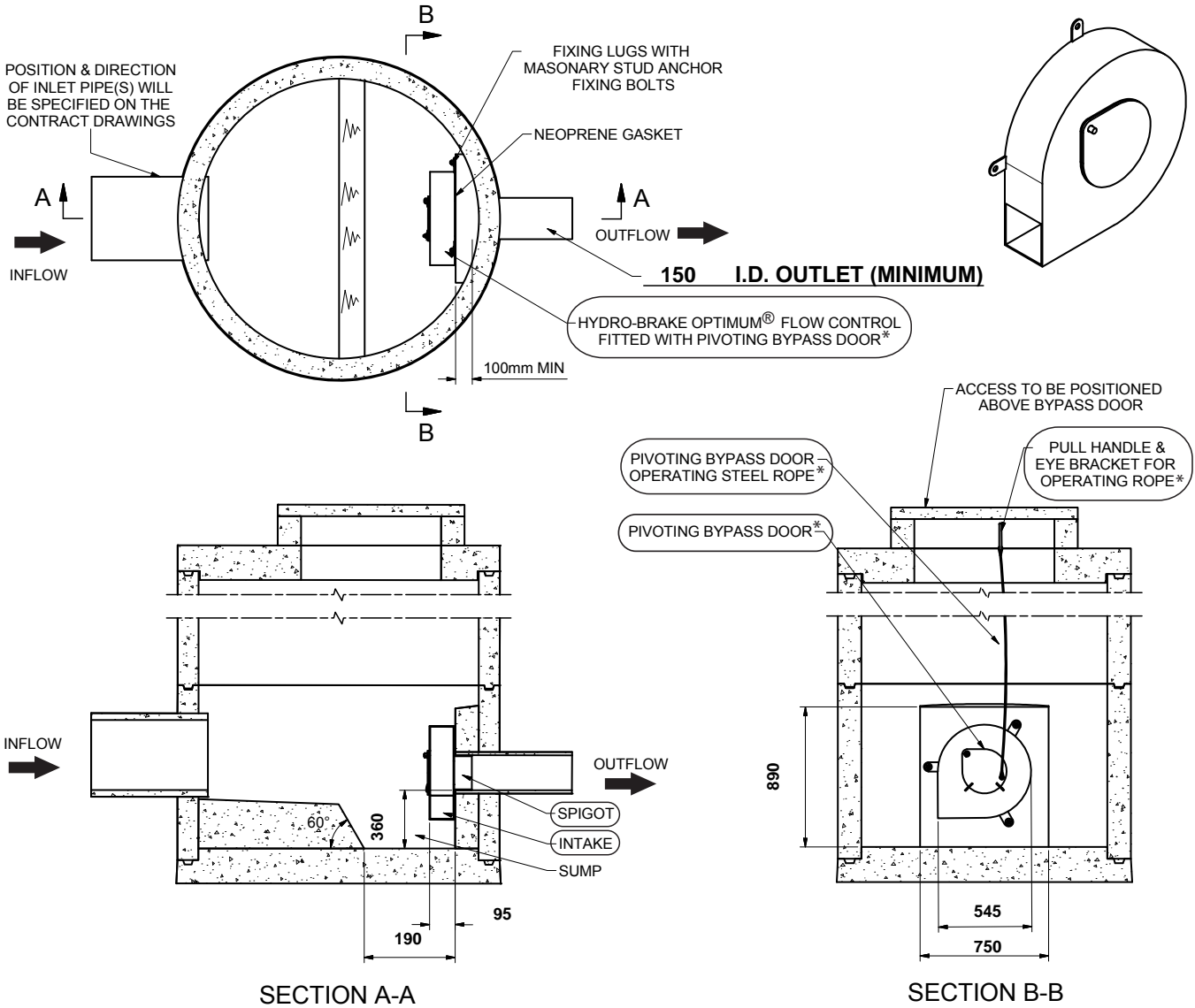
Control Point	Head (m)	Flow (l/s)
Primary Design	2.195	4.997
Flush-Flo™	0.390	3.917
Kick-Flo®	0.798	3.130
Mean Flow		3.868

Hydro-Brake Optimum® Flow Control including:

- 3 mm grade 304L stainless steel
- Integral stainless steel pivoting bypass door allowing clear line of sight through to outlet, c/w stainless steel operating rope
- Bead blasted finish to maximise corrosion resistance
- Stainless steel fixings
- Neoprene gasket to seal outlet



PT/329/0412



IMPORTANT: ○ LIMIT OF HYDRO INTERNATIONAL SUPPLY
 THE DEVICE WILL BE HANDED TO SUIT SITE CONDITIONS
 FOR SITE SPECIFIC DETAILS AND MINIMUM CHAMBER SIZE REFER TO HYDRO INTERNATIONAL
 ALL CIVIL AND INSTALLATION WORK BY OTHERS
 * WHERE SUPPLIED
 HYDRO-BRAKE® FLOW CONTROL & HYDRO-BRAKE OPTIMUM® FLOW CONTROL ARE REGISTERED TRADEMARKS FOR FLOW
 CONTROLS DESIGNED AND MANUFACTURED EXCLUSIVELY BY HYDRO INTERNATIONAL

THIS DESIGN LAYOUT IS FOR ILLUSTRATIVE PURPOSES ONLY. NOT TO SCALE.

DESIGN ADVICE



The head/flow characteristics of this SHE-0090-5000-2195-5000 Hydro-Brake Optimum® Flow Control are unique. Dynamic hydraulic modelling evaluates the full head/flow characteristic curve.
The use of any other flow control will invalidate any design based on this data and could constitute a flood risk.



DATE	10/08/2016 11:16:48
SITE	Chapel en le Frith
DESIGNER	Craig Noonan
REF	15041

SHE-0090-5000-2195-5000
 Hydro-Brake Optimum®