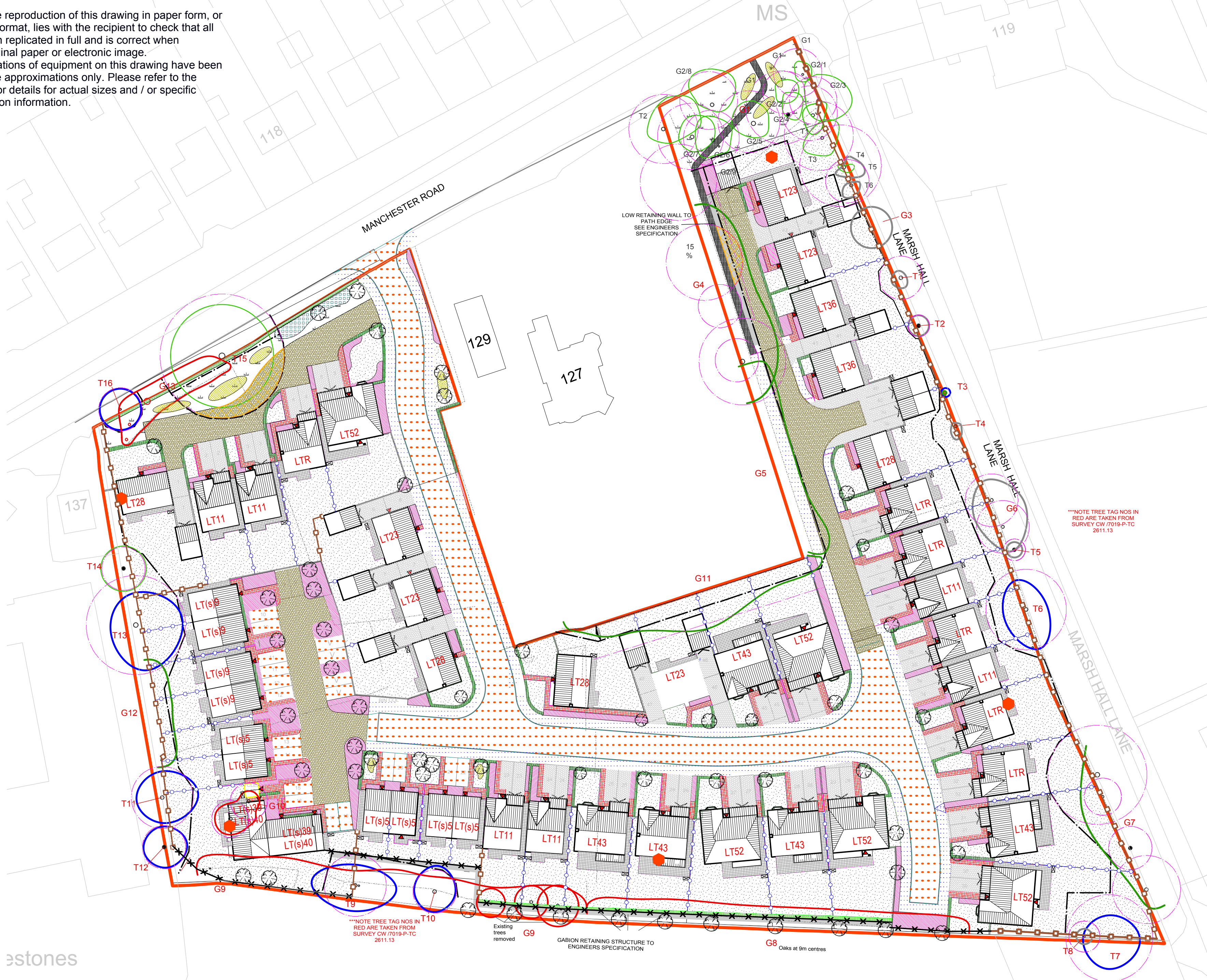
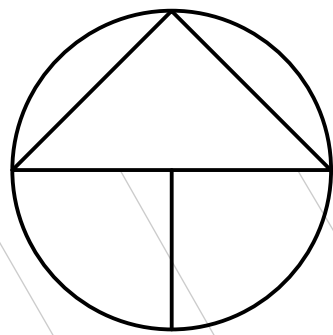


Do not scale this drawing (printed or electronic version).

Contractors must check all dimensions from site
This drawing is copyright and is for use on this site only. This drawing should be read in conjunction with all relevant consultants drawings and specialist subcontractors / supply chain drawings and specifications.
All works to be carried out in accordance with the latest British Standards / Codes of Practice unless specifically directed otherwise in the specification.

Responsibility for the reproduction of this drawing in paper form, or issued in electronic format, lies with the recipient to check that all information has been replicated in full and is correct when compared to the original paper or electronic image.
Graphical representations of equipment on this drawing have been co-ordinated, but are approximations only. Please refer to the specifications and / or details for actual sizes and / or specific contractor construction information.



KEY:

SOFTWARES

- Turfed Areas
- Shrub Areas
- Native bulb planting
- Meadow planting cut twice a year see management plan.
- Clipped hedge to frontages
- Native hedge mix to boundary
- Existing tree planting to remain (Green ,Blue & Grey to BS5837)
- Existing tree planting to remove (Red)
- Tree Protective Fencing - Construction Exclusion Zone (Black Line)
- Tree RPA areas
- New tree planting

HARDWORKS

- Area of no dig surfaces to protect tree RPA T15
- No dig pedestrian access path
- Shared drive Keyblock paving 45 degrees 'Bracken' or similar
- Private drive Keyblock paving herringbone V pattern 'Charcoal'
- Carriageway Vehicle Tarmac
- Footpath Pedestrian Tarmac
- Rear Garden paving buff concrete slab
- Front / Side paving buff concrete slab

BOUNDARY TREATMENT

- 1800mm Closed Board Fence (timber posts)
- 1500mm Closed Board Fence (timber posts)
- 1100mm post and four rail timber fence
- 1800mm Screen wall
- Retaining wall See engineers details

IN SITU BAT BOXES

- In situ cavity bat boxes type Schwegler 1FR woodcrete fitted not above doors or windows. Note must be at soffit level. Locate away from street lighting to avoid light spill

Changed boundary trees, removed southern hedge and updated min heights for hedging in line with tree and case officer comments	EM	29.09.16	L
Changed southern boundary planting to satisfy arb officer comments 27.9.16	EM	27.09.16	K
Southern boundary changes to MR sketch	EM	19.09.16	J
Removed 1500cb fence / knee rial to southern boundary added 1100mm fence.	EM	19.09.16	I
Garages to Plots 46 and 47 moved forward	EM	08.09.16	H
Update all landscaping and schedules to conform with Rev R - T model updates below Plot 9 parking repositioned with adjacent turning facility. Visitor parking relocated. Plot 43 and garage reconfigured. All in line with Case Officer comments.	EM	07.09.16	G
Plots 6 - 29 repositioned, all parking to these plots reviewed to increase landscaping. Visitor parking relocated. Plot 42 flipped to aid with turning facility to plot 43.			
Consolidated tree data added protective fencing. Added further hedge to frontage and changed tree species in line with officers comments. Modified planting to frontages 6-8, 44-47	EM	23.8.16	F
Added bat boxes in line with EC001 report recommendations	EM	2.8.16	E
Updated to 001revP, also added further trees to southern boundary and updated planting schedules	EM	26.7.16	D
Update to Rev L, changed extents of rear paving, added bin stores, paving rear to buff, keyblock to charcoal	EM	15.6.16	C
Removed rear doors from detached garages units 40 and 39. Added paving to rear of 45 and 31	EM	16.5.16	B
Removed doors to garages, side footpaths. Added additional rear paving	EM	13.5.16	A

REV	BY	DATE	REV
BY	EM	CHKD	EM
DATE	11.11.15		
DWG NO	1531015_GA001	CLIENT	LOVELL
REV	L		
TITLE	LANDSCAPE GENERAL ARRANGEMENT	SCALE	1:500 A1

root3

Landscape Architecture - Ecology

77 Leeds Road Tadcaster North Yorkshire LS24 9LA

www.root-3.com

e: info@root-3.com

t: 01937 531558