

NOTES :
 ALL SETTING OUT MUST BE CHECKED ON SITE
 ALL LEVELS MUST BE CHECKED ON SITE
 ALL FIXINGS AND WEATHERINGS MUST BE CHECKED ON SITE
 ALL DIMENSIONS MUST BE CHECKED ON SITE
 THIS DRAWING MUST BE READ IN CONJUNCTION WITH THE RELEVANT

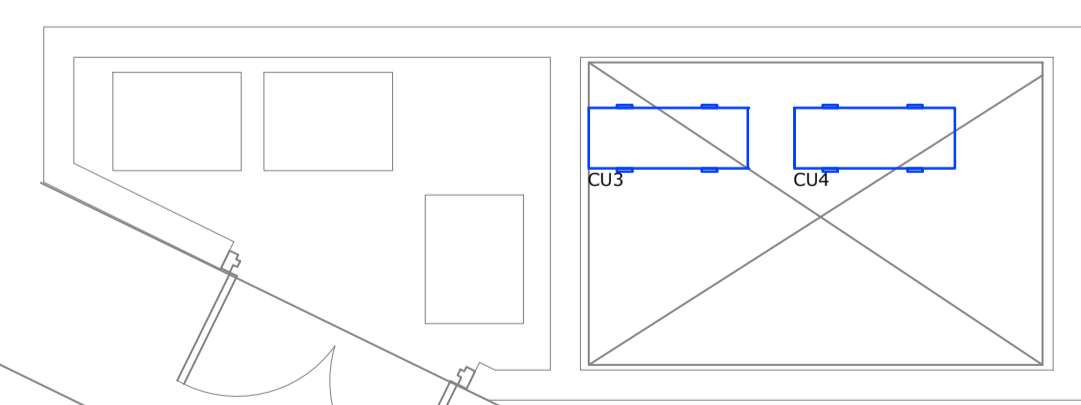
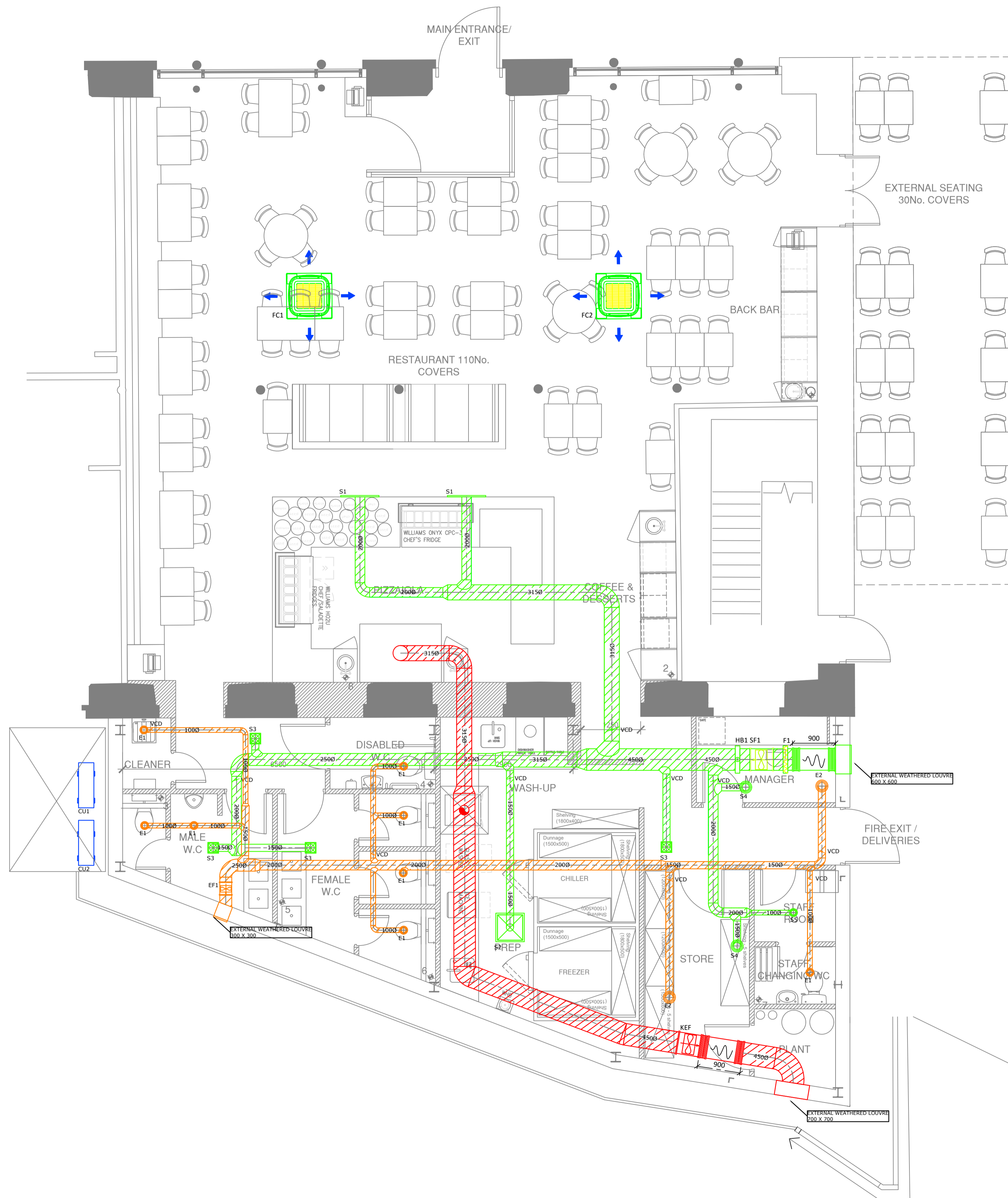
Ref	Make	Type	Size
S1	Exhaust Valve	200mm	200mm
S2	Exhaust Valve	150mm	150mm
S3	Exhaust Valve	100mm	100mm
S4	4-Way Diffuser	200 x 200	200 x 200
S5	Supply Valve	150mm	150mm
S6	Supply Valve	100mm	100mm

Ref	Make	Model	Location	Type	Technical Requirement	Dimensions	Weight
FC1	Dalton	F100C120F	Restroom	Brass/Brass Coated	Disinfecting	300x150x100mm	20.0kg
FC2	Dalton	F100C120F	Restroom	Brass/Brass Coated	Disinfecting	300x150x100mm	20.0kg
CL1	Dalton	A100C120FV1	Dish Wash	Coating Free	1ph 230v	900x1000x1200mm	41kg
CL2	Dalton	A100C120FV1	Dish Wash	Coating Free	1ph 230v	900x1000x1200mm	41kg
CL3	Dalton	Q11-21-080C	Plant Area Near to Back Bar	Low Noise Coating	1ph 230v	1000x1000x1000mm	17kg
CL4	Dalton	Q11-21-080C	Plant Area Near to Back Bar	Low Noise Coating	1ph 230v	1000x1000x1000mm	17kg

Ref	Make	Model	Location	Type	Technical Requirement	Dimensions
KEP	Symons	MS18-6-02-2000-02	Kitchen Exhaust	Above 4th store	Square Duct Fan	1000 x 1000 x 1000mm
EF1	Symons	820	WC Exhaust	Above male WC	Circle Duct Fan	300 x 300 x 1175mm
EF2	Symons	MS18-002-0000	Staff Fan	Above manager office	Square Duct Fan	1000 x 1000 x 1000mm
BB1	-	BBW 50	Blower Battery	Above manager office	1ph 110v	-

-  FRESH AIR
-  KITCHEN EXTRACT
-  TOILET EXTRACT

NOTE:



revision date notes



Client
PizzaExpress

Location
Howard Town Shopping Park
Victoria Street
Glossop, SK13 8HT

Drawing
Proposed Air Conditioning
and Ventilation Layout

Date
22/7/2016
Scale @ A1 = 1:50

Drawing No. Rev.

PE/GLOSSOP/01