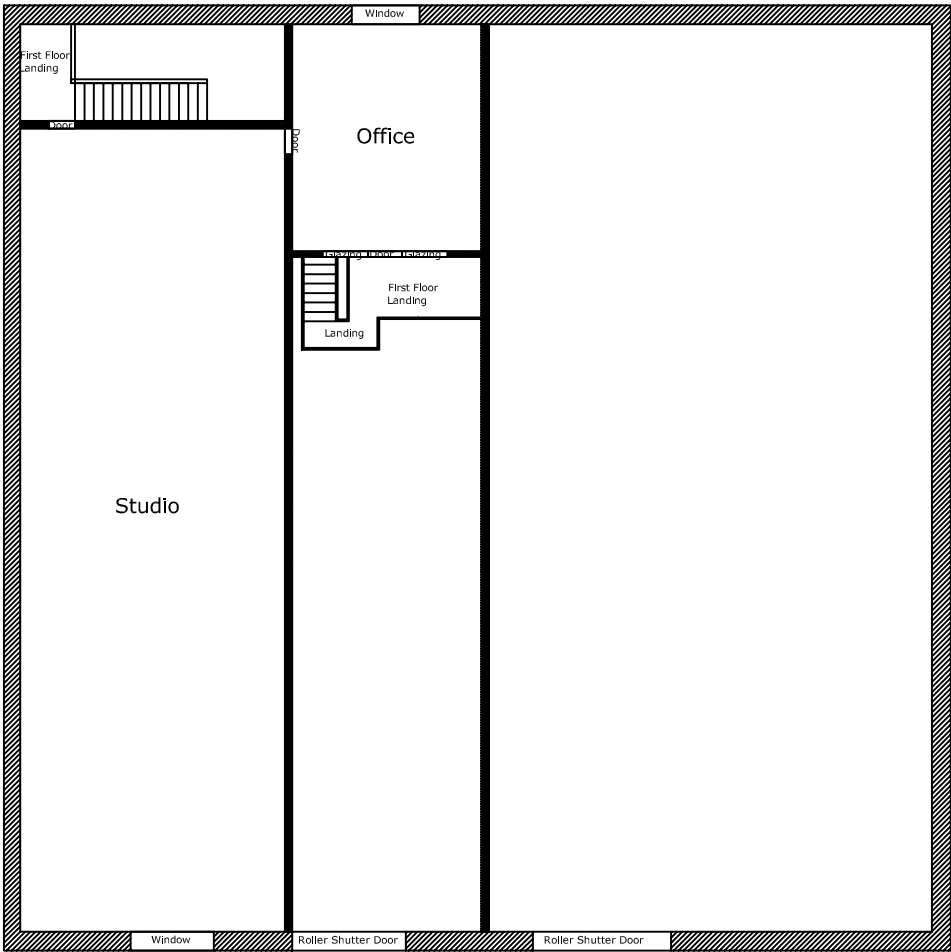


Ground Floor Plan



First Floor Plan

NB The structure of the floor plans illustrated in this drawing remains completely unchanged from its former use as a carpet warehouse. There are no plans to make any structural alterations. Some of the uses shown above remain as they formerly were eg the Office, Toilets and storage spaces. The proposed Studio was formerly a Seminar room for aspiring carpet sales persons. All the rest of the space was used for carpet storage

Planning & Development Services	
53 Long Lane,Chapel-en-le-Frith,SK230TA	
Units 9 & 10 Glossop Brook Indust. Est.	
Existing Floor Plans ; Proposed Uses	
Scale : 1/250 printed at A3 paper size	
Drawn by : Peter Dalton	
Date :25th August 2016	
N/A	
Dwg.No: 16/413/01	Revision A