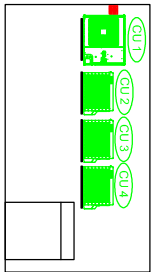


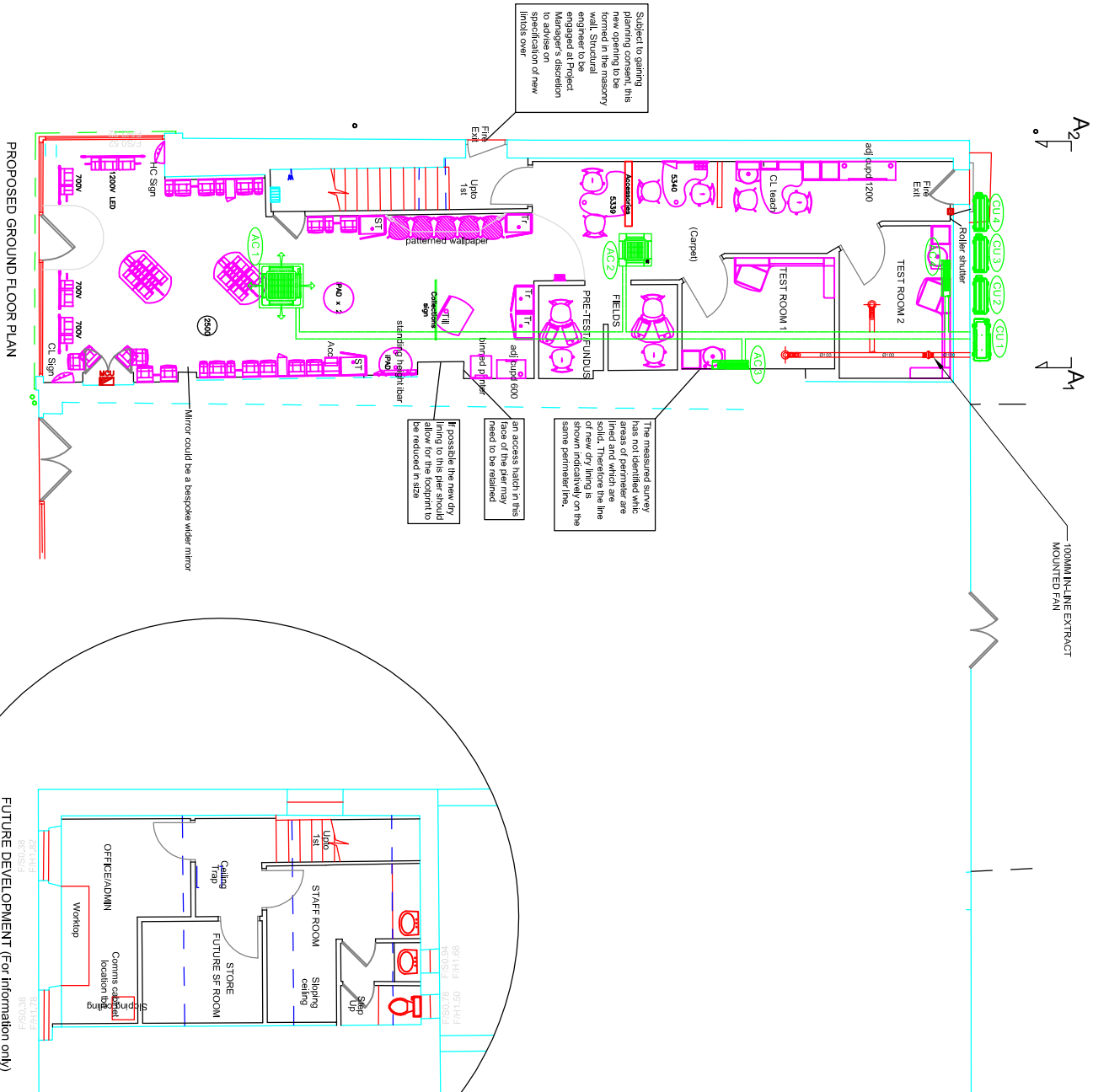
AC UNIT REFERENCE	ASSOCIATED CONDENSER	UNIT TYPE	LOCATION	FAN COIL DUTY (kW) TOTAL
ACS 1	CU 1	Heat Pump Inverter Cassette Mounted Split System	RETAIL AREA	COOL 2.28 HEAT 7.50
FCOG 71F	RZDSG 71L			
AC 2	CU 2	Heat Pump Inverter Cassette Mounted Split System	RETAIL AREA	COOL 3.40 HEAT 5.00
FRQ 3SC	RXS 3SL			
AC 3	CU 3	Heat Pump Inverter Wall Mounted Split System	TEST ROOM 1	COOL 2.44 HEAT 3.40
FTXS 28K	RXS 28L			
AC 4	CU 4	Heat Pump Inverter Wall Mounted Split System	TEST ROOM 2	COOL 2.44 HEAT 3.40
FTXS 28K	RXS 28L			

EQUIPMENT POWER SUPPLY

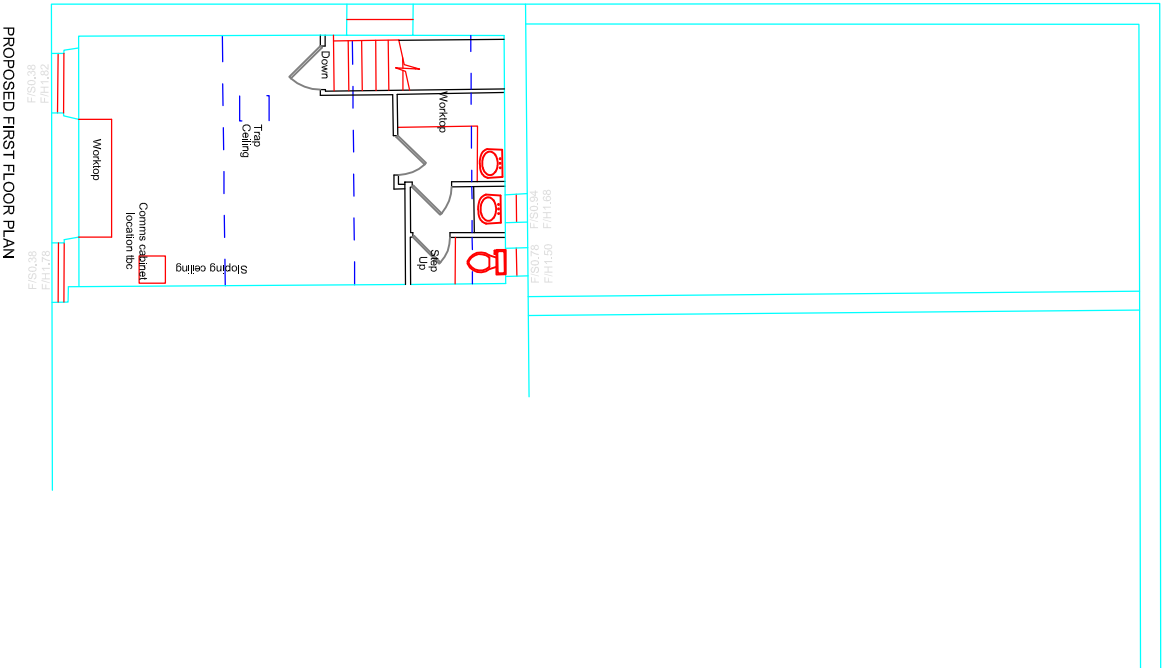
AC UNIT REF	POWER SUPPLY	No REQUIRED	ISOLATION	CURRENT (A)	
				START	RUN
RXS 28L	CONVERTING UNIT 240V150 @ 9A	2	WEATHERPROOF ROTARY ISOLATOR	3.30	3.10
RXS 35L	CONVERTING UNIT 240V150 @ 9A	1	WEATHERPROOF ROTARY ISOLATOR	4.30	4.10
RZDSG 71L	CONVERTING UNIT 240V150 @ 20A	1	WEATHERPROOF ROTARY ISOLATOR	4.00	8.66



ELEVATION VIEW A<sub>1</sub>-A<sub>2</sub>  
AT GROUND FLOOR LEVEL



FUTURE DEVELOPMENT (For information only)



#### CDM NOTES:

- WORKING FROM HEIGHT – INSTALLATION OF FITTINGS AT CEILING LEVEL – USE OF SAFE WORKING PLATFORMS TO BE USED.
- WORKING AT HEIGHT – RISK OF TOOLS OR EQUIPMENT BEING DROPPED ONTO OPERATIVES BELOW RESTRICT ACCESS TO AREAS DIRECTLY BELOW WHERE WORKS ARE BEING CARRIED OUT.
- INSTALL SERVICES WITHIN CEILING AND CEILING/SERVICE VOIDS –RISK OF FALL, INHALATION OF DUST FIBRES – SUITABLE USE OF SAFE PLATFORMS AND USE ADDITIONAL PPE IE DUST MASKS, GLOVES ETC.
- USE OF HAZARDOUS MATERIALS – HAZARDOUS MATERIALS HAVE NOT BEEN SPECIFIED IN THE NEW WORKS. COSHH SHEETS TO BE PROVIDED WHERE APPLICABLE AND SUITABLE PPE TO BE USED BY STAFF.
- MANUAL HANDLING OF PLANT AND EQUIPMENT – EQUIPMENT IS GENERALLY SMALL ENOUGH TO BE SUITABLE FOR MANUAL HANDLING. MECHANICAL MEANS TO BE USED TO LIFT LARGER ITEMS
- CUTTING, DRILLING ETC. OF METALWORKS SUCH AS TRAY CONDUIT TRUNKING ETC. – NORMAL SAFETY PROCEDURES TO BE USED, PROVIDE PROTECTIVE CLOTHING GOGGLES ETC.
- CHECK ON SITE ASBESTOS REGISTER FOR POSSIBLE ASBESTOS CONTAMINATION

#### DESIGN NOTES

- ALL ROUNDFLOW CASSETTES TO HAVE SELF CLEAN GRILLES (SHOWN IN MAIN RETAIL AREAS)

REV	DATE	DESCRIPTION
....	....	....



JOB TITLE  
SPECSAVERS OPTICIANS  
GLOSSOP (NEW STORE)  
  
DRAWING TITLE  
AS PROPOSED COMFORT COOLING AND VENTILATION SCHEME

DATE	08.07.2016	DRAWN	CJF
SCALE	1:100@A2	CHECKED	....
DRAWING NUMBER	Q8841/CJF/MO1	REVISION	....