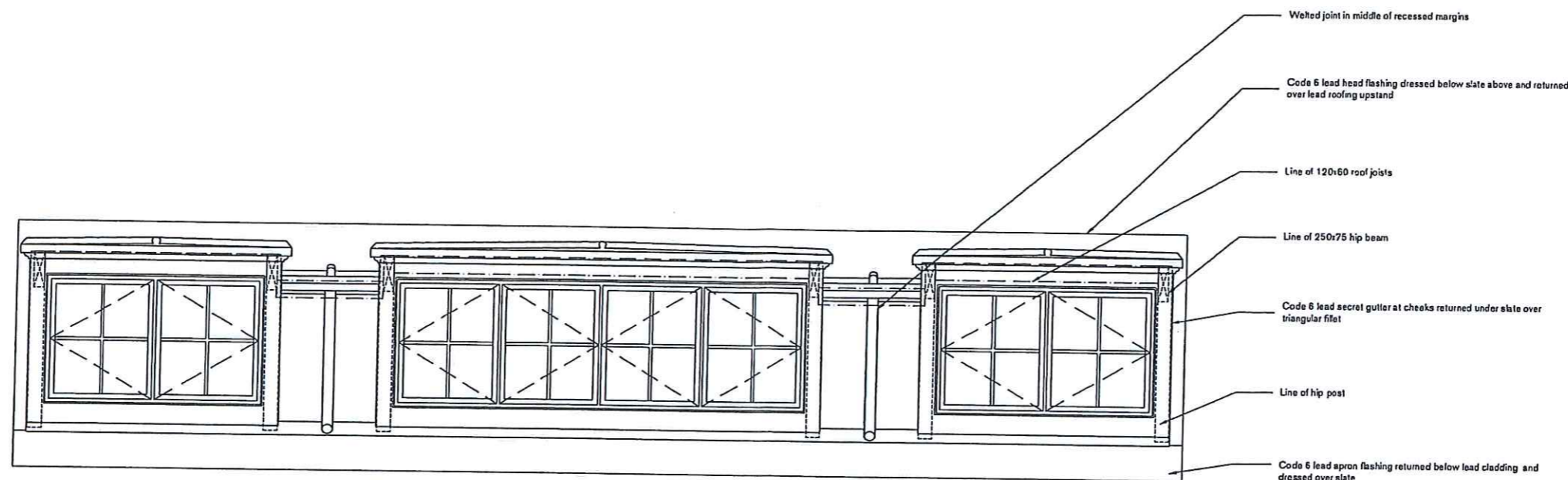


Notes
Do not scale from this drawing all dimensions to be checked on site and architect notified of any discrepancies copyright reserved.
Curious owns the copyright of this drawing, which must not be reproduced in whole or part without the written permission of Curious.

CONSERVATION ARCHITECTS
Nicholas Jacob Architects
89 Berners Street, Ipswich, Suffolk, IP1 3LN
Tel: 01473 221150 Fax: 01473 255550
www.nja.co.uk Nicholas.Jacob@nja.co.uk



ELEVATION TO DORMER - ROOM A 08

Scale 1:20

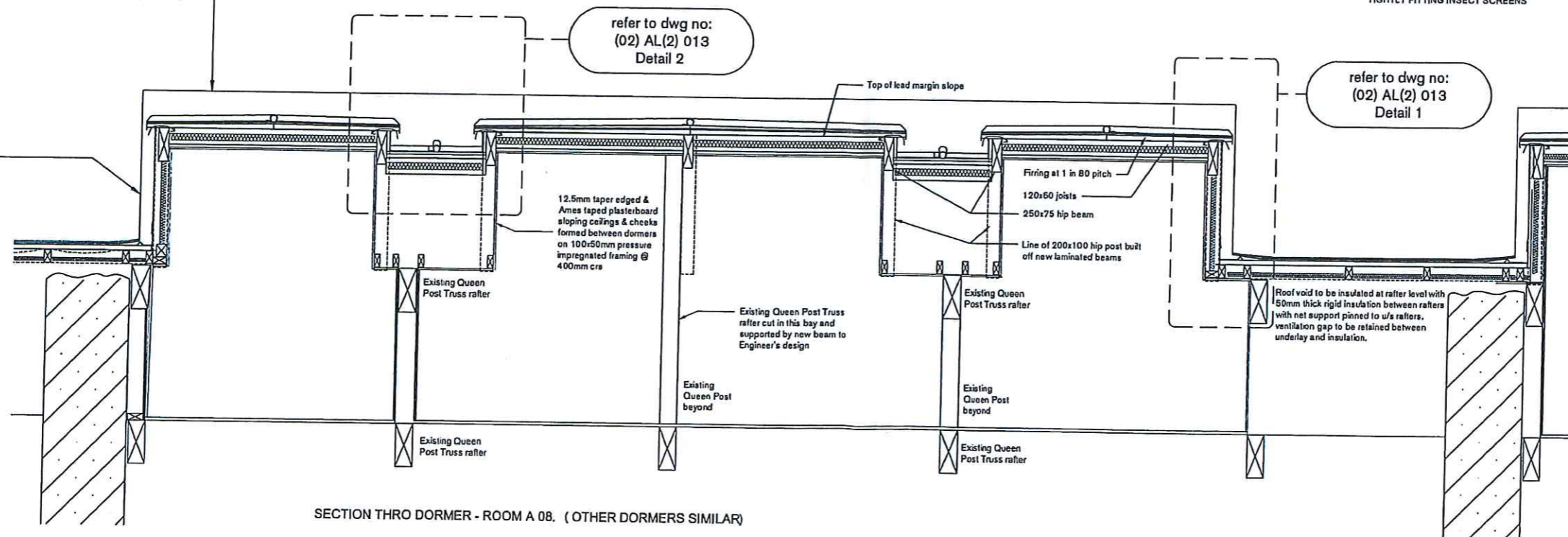
Code 6 lead roofing, with wood core rolls @ 675mm c/c max. Fixed with in accordance with LSA recommendations, to rough sawn surface of 22x120mm pressure impregnated. Boards with 2mm gaps between, secured with non-ferrous fixings to 25mm (min depth) x 60mm wide fixing channels at 1:80 pitch on 120x60 dormer roof joists @ 400mm c/c, supported from new timber dormer hip beams to Engineer's design, 100mm rigid insulation between joists, finished inside with 37.5mm taper edged insulated plasterboard, Ames taped, U value 0.18 or better

Code 6 lead, with vertical wetted joints @ 675mm c/c max, fixed with in accordance with LSA recommendations to rough surface of sawn 22mm thick pressure impregnated boards secured with non-ferrous fixings to 100x50mm pressure impregnated cheek studs at 400mm centres, 100mm rigid insulation between studs, finished inside with 37.5mm insulated, taper edged plasterboard, Ames taped.

refer to dwg no:
(02) AL(2) 013
Detail 2

NB: ALL ROOF VENTILATION OPENINGS TO BE FITTED WITH PROPRIETARY, NON FERROUS, TIGHTLY FITTING INSECT SCREENS

refer to dwg no:
(02) AL(2) 013
Detail 1



SECTION THRO DORMER - ROOM A 08. (OTHER DORMERS SIMILAR)

SECTION THROUGH DORMER - ROOM A 08

Scale 1:20

0

5m

REV	DATE	DESCRIPTION	BY	CHK	APP
C	02.10.15	REVISED TO CONTRACT STATUS	VH	JF	
PC2	24.03.15	REVISED FOR PRE-CONTRACT	DS	LJ	
PC1	11.03.15	ISSUED FOR PRE-CONTRACT	JW	LJ	
rev:	date:	description:	dm:	chk:	app:
PURPOSE CONTRACT					

Curious
It all begins with the idea

client:	BUXTON CRESCENT HOTEL & THERMAL SPA COMPANY LTD		
project:	HOTEL & SPA DEVELOPMENT THE CRESCENT BUXTON		
title:	(02) CRESCENT REFURBISHMENT ATTIC DORMER DETAILS SHEET 2 AS PROPOSED		
scale @ size:	date:	classification:	
1:20@A1	02.02.14		
drawn:	checked:	approved:	
Wright			
drawing stage:	CONTRACT		
project no:	work stage:	drawing no:	rev:
20046	(E)	(02) AL(2)012	C
Curious Architects 64 Waterloo Street Glasgow G2 7DA t 0141 552 1522 w www.thinkcurious.com			