

Marley Modern Concrete Tile fixed in accordance with manufacturers \_\_\_\_\_ site specific fixing specification. Colour as External Materials Schedule

Typically 400mm thick overall Isowool Spacesaver mineral/ \_\_\_\_\_ glass fibre, laid in three layers; 100mm laid between the bottom chord of trusses, 200mm laid at 90 degrees to the roof trusses and 100mm laid in line with trusses to achieve minimum 0.11 W/M<sup>2</sup>k.

Proprietary crossflow ventilator to ensure 25mm \_\_\_\_\_ minimum air gap at eaves locations only.

Over Fascia Vent installed in accordance with \_\_\_\_\_ manufacturer's instructions and recommendations.  
Plywood tilting fillet. \_\_\_\_\_  
'Wavin' rainwater gutter. Profile and colour as \_\_\_\_\_ per external materials finishes specification.  
Roofing battens used to fix down soffit, base \_\_\_\_\_ rail with vertical noggins fixed to truss/rafter  
UPVC fascia, colour as per finishing spec, \_\_\_\_\_ fixed to manufacturer's instructions.  
Soffit to be UPVC and colour as per finishing \_\_\_\_\_ spec, fixed to manufacturer's instructions.

ROOF DETAIL NOTES

THERMAL PERFORMANCE OF JUNCTION

Ensure that the wall insulation is secured firmly against the inner leaf of the external cavity wall. Tuck compressible insulation down into head of cavity.  
Ensure the gap between the wall plate and underside of roof/eaves ventilator via. insulation having a minimum R-value across the thickness of the insulation of 1.2m<sup>2</sup>K/W.  
Ensure continuity of the insulation throughout the junction.  
Ensure that the full depth of insulation between / over the joists abuts the eaves insulation.  
Ensure that the insulation is installed correctly over the rafters and is in contact with the mineral wool insulation where applicable.  
Verge – Ensure the top of the wall is levelled with mortar to the correct pitch and that the wall insulation is taken up level with the top of wall.  
Verge – Ensure the full depth of insulation extends to the wall. Pack the gap between rafter and wall with compressible insulation.  
Pack compressible insulation between the last truss/joist and separating wall.

AIR BARRIER CONTINUITY

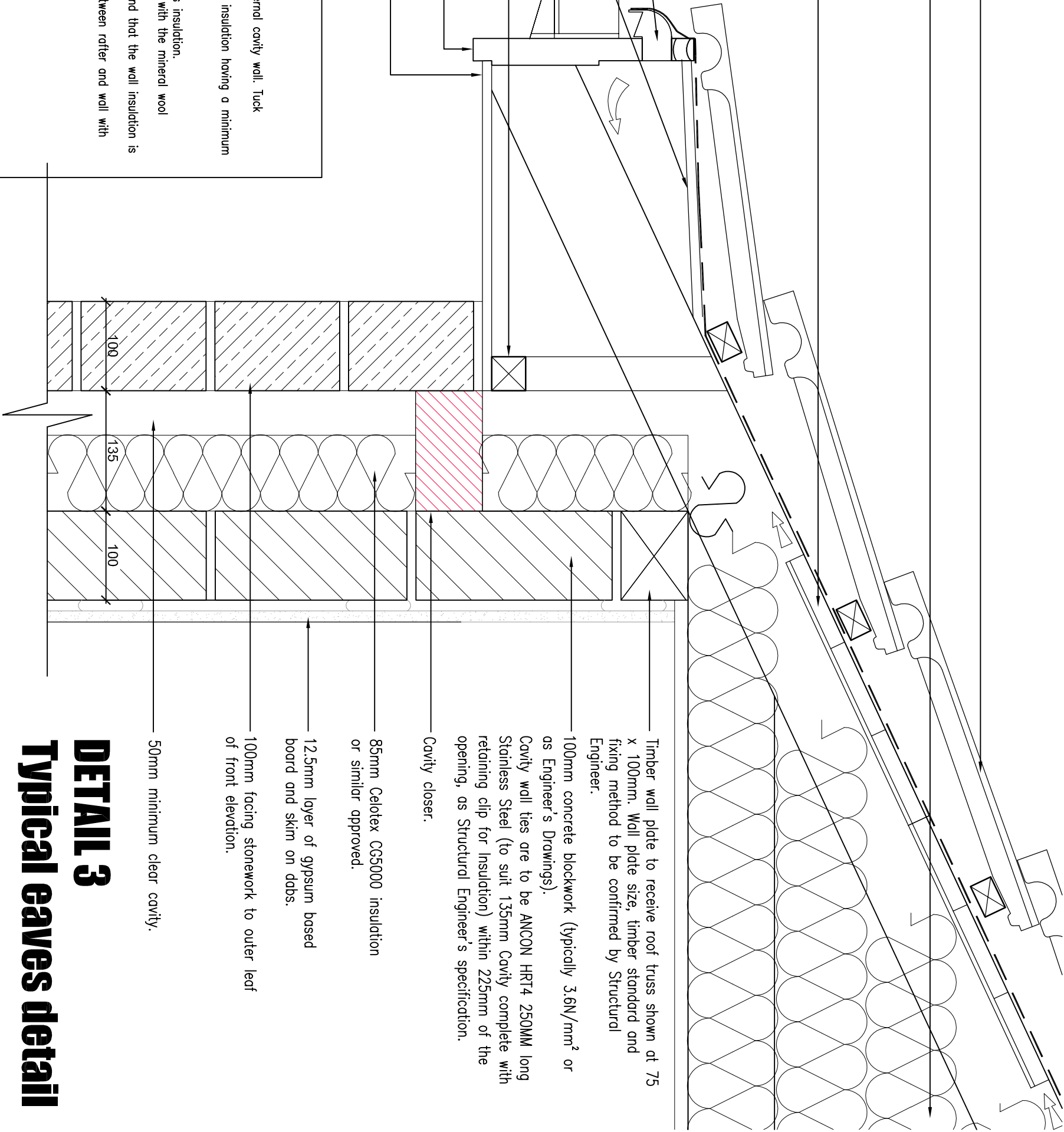
Bed the wall plate on a continuous mortar bed.  
Seal all gaps between the ceiling and masonry wall with flexible sealant.  
Seal all penetrations through the air barrier using a flexible sealant.  
Fix ceiling first and seal all gaps between the ceiling and masonry wall with either adhesive or flexible sealant.  
Where internal wall abuts underside of timber roof members, fix ceiling first and seal all gaps between the ceiling and head member of the partition with flexible sealant prior to installing partition linings.

AIR BARRIER OPTIONS

Plasterboard on dabs with continuous ribbon of adhesive round all openings, along the top and bottom of the wall, and at internal and external corners elsewhere.

GENERAL NOTES

Ensure cavities are kept clean of mortar spots and other debris during construction.



DETAIL 3  
Typical eaves detail  
Stone

revision date drawn description

HB Villages  
Dale Road, Buxton

ROOF DETAILS - EAVES STONE

09.07.15 SC 1:5 @ A3

14175 (37) 003 \*

www.calderpeel.com