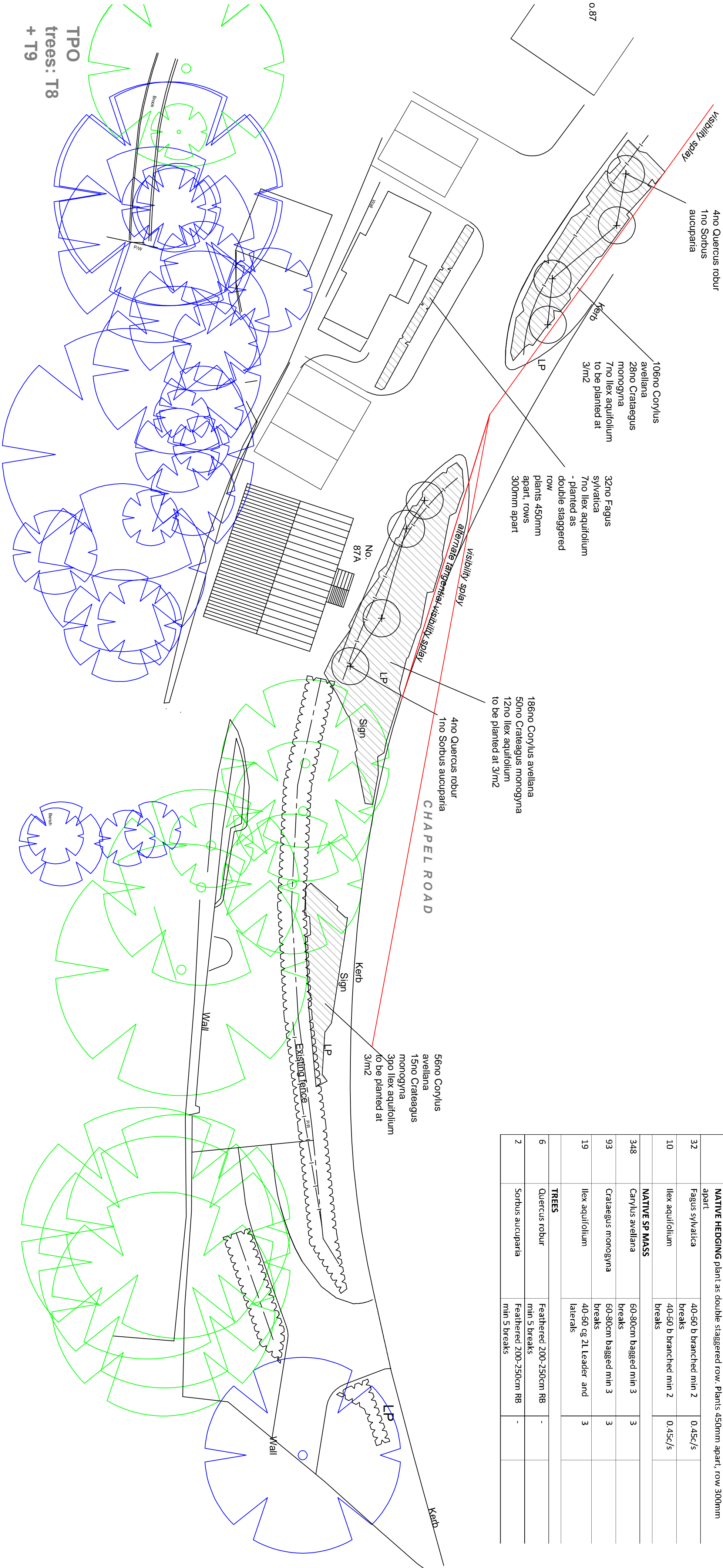


NO	SPECIES	SPECIFICATION	/M2	ABBREV
	<b>NATIVE</b> Hedging plant as double staggered row. Plants 450mm apart, row 300mm apart			
32	Fagus sylvatica	40-60 b branched min 2 breaks	0.45c/s	
10	Ilex aquifolium	40-60 b branched min 2 breaks	0.45c/s	
	<b>NATIVE SP MASS</b>			
348	Carylus avellana	60-80cm bagged min 3 breaks	3	
93	Crataegus monogyna	60-80cm bagged min 3 breaks	3	
19	Ilex aquifolium	40-60 cg 2L leader and laterals	3	
	<b>TREES</b>			
6	Quercus robur	Feathered 200-250cm RB min 5 breaks	-	
2	Sorbus aucuparia	Feathered 200-250cm RB min 5 breaks	-	



#### PLANTING SPECIFICATION

##### PREPARATION –

- Before commencing planting works locate services. Clear all building rubble and debris.
- Establish extent of root protection area and carryout works in these areas by hand to ensure tree roots are not damaged or soil levels changed.
- Prior to laying topsoil ensure all areas for soft landscaping, seeding, lifting or planting, are tipped thoroughly to alleviate compaction and remediate any potential water-logging issues. Any land drainage work shall be installed prior to laying topsoil.
- All ground preparation and planting operations shall comply with BS5428 (1989) Code of Practice for General Landscape Operations.

**TOPSOIL – GENERALLY –** To be medium textured loam slightly acidic – neutral, free from perennial weed, roots, and stones over 50mm. It should be fertile and contain an adequate humus and fibre content. Imported topsoil shall conform to BS 3882 (2007), multi-purpose grade.

- Ensure 150mm base below soft landscape areas is broken up to facilitate drainage.
- Spread approved topsoil, when dry and in dry conditions, to areas shown on plan to depths specified below, in layers not exceeding 150mm, to bring surface to levels.
- Establish and maintain access and drainage. Ensure all areas are free of debris and rubbish.
- Stability for newly created and existing planting. From the report any soil amendments should be added to improve the soil properties in terms of curb structure, drainage or water retention properties, and nutrients as identified
- Any weeds within topsoil to be controlled by a suitable method, to provide clean soil at time of planting.
- Topsoil to be finished 25mm settled depth above adjacent hard surfaces, kerbs, inspection covers and minimum 150mm below damp proof course.

**DEPTH OF TOPSOIL –** Generally

- Shrub planted area – 450mm depth
- Climbers – 600mm depth
- Hedge – 550mm depth x min 600mm wide
- General tree pits – 1.2x1.2m x 600mm deep. Slightly draining subsoil should be present beneath planting pit.
- Turf area – 150mm topsoil

**PLANTS –** All trees and shrubs to be to BS 3286 and National Plant Specification (NPS) and as scheduled, no substitutions unless agreed with landscape architect.

**PLANTING SEASON –** If planting outside normal planting season, (November to March) all plants must be container grown and extra watering provided, subject to weather, to ensure plant establishment. Bare root stock is only to be planted between November to March.

**WATERING –** Tree planting and crown planting to be watered during first summer to aid establishment. Other planting watered if prolonged dry spells, occur, during first year.

##### CULTIVATION

**SHRUB PLANTING – General**

- Topsoil preparation After grading and general cultivation, bring top 300mm of topsoil to a fine tilth, incorporating 100mm depth of peat tree compost. Rake and bring to given levels, mowing in with surrounding, remove all stones or debris over 50mm.
- Planting pits to be dug to required depth and width, and to be filled with good quality topsoil.
- Pit plant shrubs in accordance with good horticultural practice. Refill damaged or root bound plants, remove all containers, spread out roots, trim any damaged shoots, backfill with topsoil, mature as above, with original soil mark at ground level, water to fill capacity on completion.
- After planting spread 75mm depth of amenity grade bark mulch – provide a sample of bark mulch for approval, mulch must not be dislodged by the wind. Ensure mulch is feathered back behind planting bed edge to avoid mulch over-spilling onto adjacent hard surfacing.
- If container grown planting is carried out during summer months or periods of prolonged dry weather, watering to be carried out during first year, the contractor is to provide adequate watering to ensure establishment of new planting.

##### HEDGE

- Hedge planted and mulched as for shrubs.
- Trench dug, base broken up by 150mm to facilitate drainage, sides of trench scaffolded.
- Provide temporary protection along new planting line to avoid people cutting through. If necessary, for first 2 years until the hedge is established.
- After 2 years planting prior to shape hedge.
- Water thoroughly on completion.

##### CULMERS

- Culmers to be planted and mulched as for shrubs.
- A section of 600mm wide x 1200 high trellis or mesh (type to be confirmed with CA or landscape architect), shall be fixed to the wall, fence or pergola to aid establishment of culmers. The trellis is to be fixed 450mm above ground.
- Canes shall be removed and shoots should be carefully trained in direction of intended growth, using additional ties if necessary.
- Culmers shall be planted deeply ie with the top of the root ball 5cm lower than finished soil level.
- Water thoroughly on completion

##### TREES

- Trees to be planted in tree pits 1.2m x1.2m x 600mm deep, base of pit broken up by a turner 150mm to alleviate drainage. Lay irrigation pipe to facilitate watering.
- Tree pit to be backfilled with a mix of topsoil, and tree planting compost at ratio 3:1 and slow release fertiliser to manufacturer's recommendations. Use mycorrhizal gel or compound at base on pit in contact with roots. Avoid contact between slow release fertiliser and mycorrhizal compound.
- Fix tree stakes into firm ground below pit before planting, backfill in 150mm lightly consolidated layers.
- Stake trees with a single 1.6m x 60mm dia machine rounded timber stake and secured with no. rubber buckle tie.
- Allow for permanent staking of Apple sp.
- Water thoroughly on completion.

##### TURF TO AMENITY AREA

- Cultivate topsoil to create a firm bed with a fine tilth removing stones exceeding 25mm incorporating a pre-seeding fertiliser at the rate recommended by the manufacturer.
- Use mycorrhizal gel or compound at base on pit in contact with roots.
- Allow watering if required to ensure establishment.

##### PLANT FAILURES

Plant failures, except those due to theft or malicious damage, to be replaced by equivalent stock on a yearly basis during the next planting season, and for a period of 5 years following Practical Completion.

**NOTE**  
FOR HARDWORKS DETAILING AND SLOPE STABILISATION  
PLEASE REFER TO CLIENT ARCHITECT/ENGINEERS DRAWINGS

##### Revision

##### Project:

87 Chapel Road, Whaley Bridge

##### Drawing:

##### PLANTING PLAN

Drawing Number:

433/P/02

Revision:

-

##### Scale:

1:200 @ A2

##### Drawn By:

-

##### Date:

Nov 13