

PLANTING SCHEDULE: Batham Gate Road

TREES		Code	Size in cm	Root Condon	
Quantity				Pot size (C)	
8	Acer pseudoplatanus	ACE PSE	16-18 girth	RB	
10	Fagus sylvatica	FAG SYL	16-18 girth	RB	
4	Fagus sylvatica 'Dawyc'	FAG DAW	16-18 girth	RB	
3	Quercus robur	QUE ROB	16-18 girth	RB	
6	Betula pendula	BET PEN	16-18 girth	RB	
2	Betula utilis jacquemontii	BET JAQ	16-18 girth	RB	
4	Pyrus calleryana 'Chanticleer'	PYR CHA	16-18 girth	RB	
4	Sorbus aucuparia 'Joseph Rock'	SOR JOS	16-18 girth	RB	
2	Prunus 'Sunset Boulevard'	PRU SUN	16-18 girth	RB	
2	Prunus umineko	PRU UMI	16-18 girth	RB	
Key specimens shrubs					
5	Amelanchier lamarckii (multi stem)	AME LAM	1.75-2.00m high	CG	
3	Magnolia soulangeana	MAG SOU	1.75-2.00m high	CG	

Tree pit details and drainage requirements to be confirmed prior to planting.

HEDGES							
Quantity		Code	Size in cm	Root Condon	Density/Spa	Notes	Final height
	<b>Beech Hedge</b>			Pot size (C)			
93	Fagus sylvatica	FS	60-90cm	BR	5No / linear	Double staggered row	1m
	<b>Native Mix Hedge</b>	NM			5No / linear	Double staggered row	1.2m
234	Crataegus monogyna		60-90cm	BR			
176	Corylus avellana		60-90cm	BR			
176	Fagus sylvatica		60-90cm	BR			

All hedges to be trimmed lightly after planting to promote bushy growth.

SPECIFICATION NOTES

- General Landscaping  
Existing levels to be preserved around retained existing trees and vegetation. Existing trees and vegetation to be retained are to be protected in accordance with BS5837:2012 during construction. Proposed planting under existing trees subject to sufficient space in root areas.
- Topsoil  
Imported topsoil to be a good quality loam to BS 3882:2015. All topsoil areas shall be thoroughly cultivated by hand or suitable machinery to the full depth of the topsoil layer, incorporating ameliorants as specified and/or as indicated by analysis and/or as directed by the Landscape Architect. Hand cultivations shall be carried out to achieve the required finish on areas where machine cultivation is impossible ie adjacent to kerbs, manholes and footpath junctions etc. Surplus plant matter, rubbish and surface stones having any dimension greater than 25 mm shall be collected and removed from the site. Existing topsoil to be stripped and re-used if suitable as per specification. All work to be carried out in line with BS 3882:2015 and DEFRA Construction Code of Practice for the Sustainable Use of Soils on Construction Sites (2009).
- Plant Handling  
General plant stock to conform to BS 3936-4: 2007 and planting to BS 4428: 1989. Plants shall be first class examples of their species or variety, free from all pests and diseases, with good fibrous root systems and materially undamaged (refer to relevant sections of BS3936 Parts 1-4 'Specification of Nursery Stock'). All planting operations to be in general compliance with BS4428: 1989 'Code of Practice for general landscape operations (excluding hard surfaces)'.  
Carry out all planting while soil and weather conditions are suitable. Do not plant during periods of frost or strong winds. Plant only during the following periods:
  - Container grown and root ball plants: At any time if ground and weather conditions are favourable. Ensure that adequate watering and weed control is provided.
  - Bare Root stock to be planted November to March.Setting-out of planting beds to be approved by Landscape Architect before work commences. Ensure that plant beds are neatly defined, and rise from adjacent paved areas. All ornamental planting areas to be mulched with 75mm (settled depth) bark mulch. Sample of mulch to be approved by Landscape Architect. Topsoil depth to be 45mm for planting and 150mm for grass.
- Trees  
Trees shown on plan to be planted with species as labelled or similar approved. All trees to be planted in pits 1m x 1m x 0.9m deep backfilled with 500mm depth 80% clean topsoil and 20% peat free tree and shrub planting compost to PAS100 and 100 gms granular fertilizer, over 400mm washed medium coarse grade sand bed to base of pit. Water-in heavily after planting and surface mulched 75mm depth. All trees to be double staked with timber cross bar and soft ties, multi stems should have a diagonal single stake. Any necessary tree works are to be carried out by an approved tree surgeon to BS 3998: 2010. Trees planted in grass lawn to be set in bare earth circles, 1m diameter around tree trunk with bark mulch to 75mm depth after planting. All work to be carried out in line with BS 3882:2015 and DEFRA Construction Code of Practice for the Sustainable Use of Soils on Construction Sites (2009).
- Hedges  
All stock to be planted in double rows at 5 per linear metre. All hedges to be mulched with 75mm depth approved bark mulch after planting.
- Specimen Shrubs (e.g Magnolia)  
All shrubs to be planted in pit of min. size 0.4m x 0.4m x 0.4m deep so as to accommodate full root spread, backfilled with 80% clean topsoil and 20% approved green compost to PAS100 and 20 gms granular fertilizer. All shrub beds to be mulched with 75mm depth approved bark mulch after planting.
- Shrub Planting  
All plants to be planted in cultivated planting beds at densities shown in plant schedule, in pits of min. size 0.3m x 0.3m x 0.3m deep so as to accommodate full root spread, backfilled with 80% clean topsoil and 20% compost to PAS100 and 20 gms granular fertilizer. All shrub beds to be in min. 300mm good quality, well prepared topsoil.
- Grass/Turf  
Turfing shall be carried out only during appropriate seasons and while soil and weather conditions are suitable for the relevant operations. Hand tools shall be used around trees, plants and in confined spaces where it is impractical to use machinery. The soil shall be weed free prior to turfing. Turf shall be laid on prepared, levelled soil (minimum 150mm depth) in the areas indicated on the drawings.
- Climbers - Hydrangea Petiolaris  
All climbers to be planted in pit of min. size 0.4m x 0.4m x 0.4m deep so as to accommodate full root spread, backfilled with 80% clean topsoil and 20% approved compost. All beds to be mulched with 75mm depth approved bark mulch after planting. All plants to be planted with frame support attached to adjacent wall or fence.

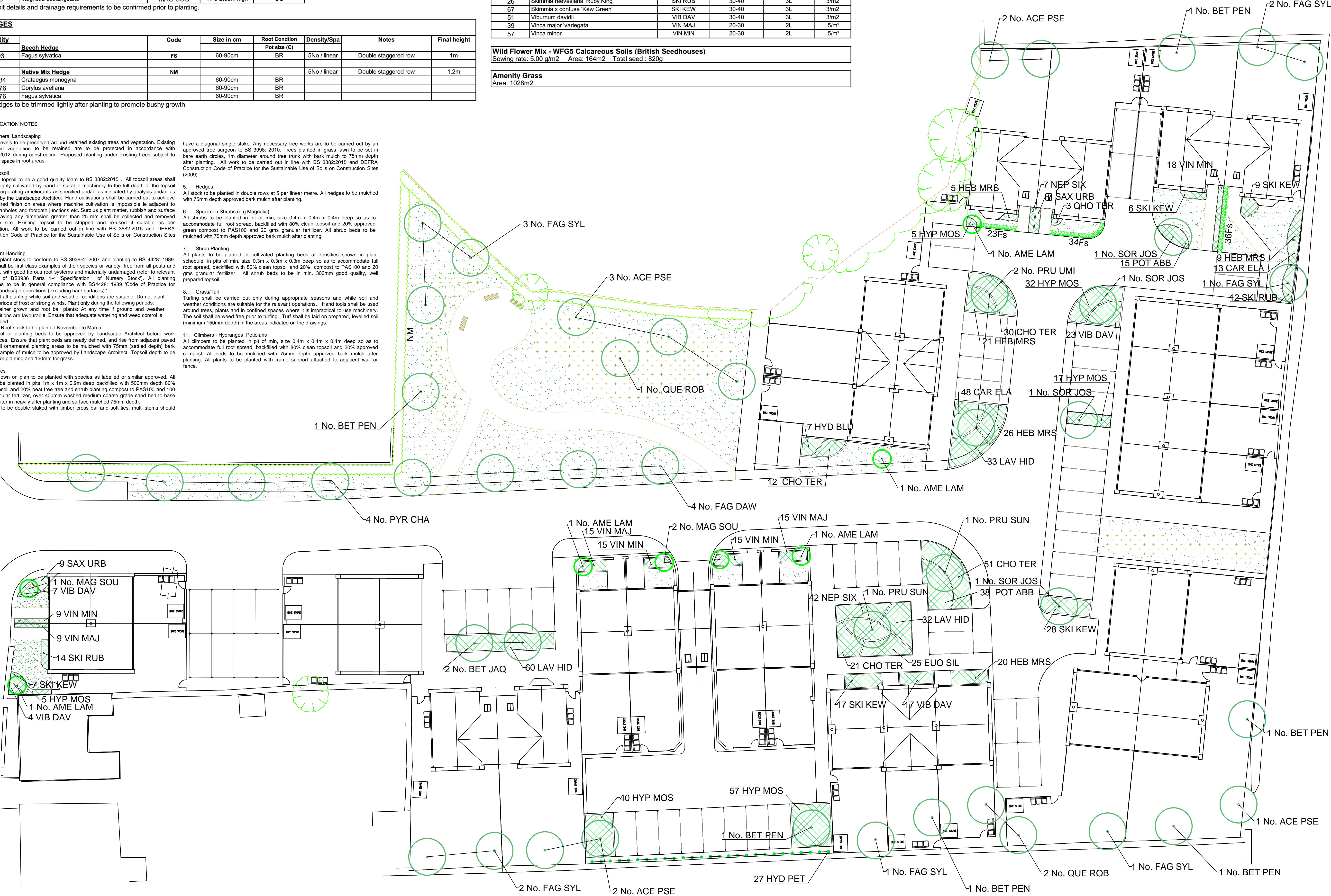
ORNAMENTAL SHRUBS		Code	Size in cm	Root Condition	Density/Spacing (guide only)
Quantity				Pot size (C)	
Plant in single species groups of 2, 3 and 5 as detailed in the planting plans					
61	Carex elata 'Aurea'	CAR ELA	—	5L	5/m²
117	Choisya ternata	CHO TER	30-40	3L	3/m2
25	Euonymus 'Silver Queen'	EYO SIL	30-40	3L	3/m2
81	Hebe Mrs Winder	HEB MRS	30-40	3L	3/m2
7	Hydrangea macrophyllum 'Blue Wave'	HYD BLU	40-60	10L	2/m2
27	Hydrangea petiolaris	HYD PET (HP)	60-80	5L	As shown
156	Hypericum x moserianum	HYP MOS	30-40	3L	3/m2
125	Lavandula angustifolia 'Hidcote'	LAV HID	20-30	5L	3/m2
49	Nepeta 'Six Hills Giant'	NEP SIX	30-40	2L	5/m2
53	Potentilla fruticosa 'Abbotswood'	POT ABB	20-30	3L	3/m2
16	Saxifraga x urbium	SAX URB	20-30	2L	5/m²
26	Skimmia reevesiana 'Ruby King'	SKI RUB	30-40	3L	3/m2
67	Skimmia x confusa 'Kew Green'	SKI KEW	30-40	3L	3/m2
51	Viburnum davidii	VIB DAV	30-40	3L	3/m2
39	Vinca major 'variegata'	VIN MAJ	20-30	2L	5/m²
57	Vinca minor	VIN MIN	20-30	2L	5/m²

Wild Flower Mix - WFG5 Calcareous Soils (British Seedhouses)

Sowing rate: 5.00 g/m2 Area: 164m2 Total seed : 820g

Amenity Grass

Area: 1028m2



KEY

- Existing Trees and Vegetation to be Retained
- Proposed Trees
- Proposed Specimen Shrubs
- Proposed 1.2m High Native Hedge
- Proposed 1m High Hedge
- Proposed Shrub Beds
- Climbers
- Proposed Amenity Grass
- Proposed Meadow Wildflower Planting

Notes  
For details on boundary treatments refer to drawing number BAT1311\_L003

Rev	Date	Description	Initials



PGLA Ltd  
Landscape Architects  
23 New Mount Street  
Manchester  
M4 4DE  
t: 0161 212 1131  
e: info@pgla.co.uk  
w: www.pgla.co.uk

Client  
Mr T Bagshawe  
Project  
Batham Gate Road, Peak Dale  
Description  
Planting Plan and Schedule

Scale: 1:200 at A1  
Job number: BAT1311  
Drawn: ML  
Drawing number: \_L002  
Date: 10/03/15  
Revision: A