



DO NOT SCALE FROM DRAWING - USE WRITTEN DIMENSIONS ONLY -ANY DISCREPANCIES SHOULD BE REPORTED TO THE AUTHOR.

ORIGINAL DESIGN COPYRIGHT RETAINED BY PAUL DINSDALE ARCHITECTURE LIMITED 2007. COPIED UNDER LICENCE BY PAUL SEARLE.

TO BE READ IN CONJUNCTION WITH STRUCTURAL ENGINEER'S DETAILS AND SPECIFICATION. ANY DISCREPANCIES TO BE REPORTED TO THE AUTHOR WITHOUT DELAY.

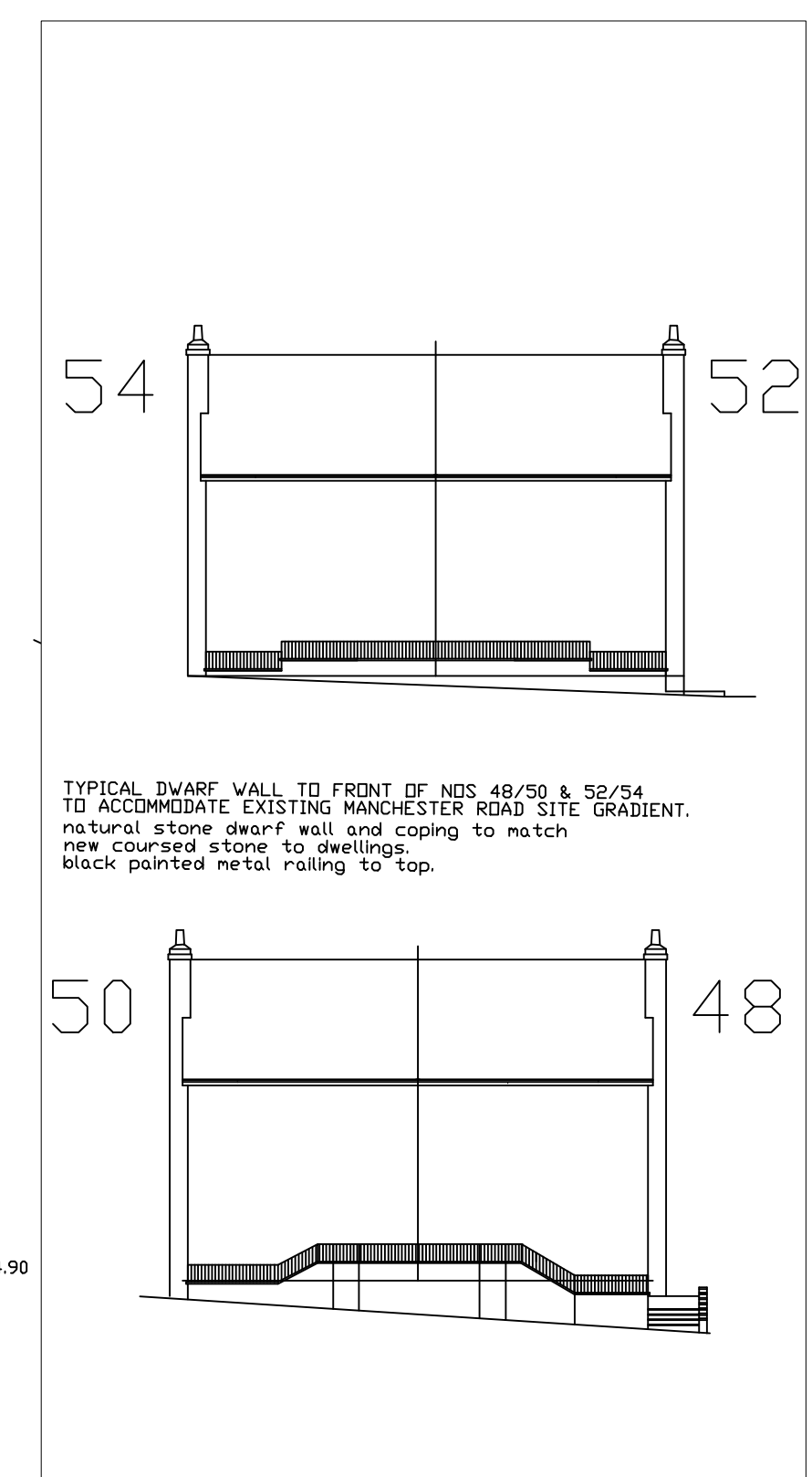
THESE DRAWINGS ARE ISSUED FOR CONSTRUCTION PURPOSES.

Rev 3 December 2014

Overall Development Layout as drawing 1205/01revF and Planning Approval HPK/2013/0183

Soft Landscaping:  
In accordance with  
Tree Heritage drawing  
THL/DW72rev4 and  
Planning Approval HPK/2012/0420

As-built detailing shown.  
Entrance off Manchester Road  
positioned to avoid existing  
telegraph pole.



Rev5 13March15PlanningMeeting  
Timber Fencing shown &  
position 56&58 adjusted.  
Rev 4 January 2015

Rev 3 Site Layout car-parking  
allocated 18 potential spaces  
omit refuse building & add

entrance path to dwellings.  
As-built detailing shown.

PAUL SEARLE ARCHITECT LTD  
CHARTERED ARCHITECT  
MILLINGTON HSE 12 LEEK ROAD CONGLETON CW12 3HU  
(01260) 278076 OR MOBILE 07989 410658

12 JOB  
The Punch Bowl, BUXTON  
DRAWING TITLE  
Proposed Site Layout

including hard and soft

landscaping  
DATE 16/05/2012 SCALE 1:200@A1.  
DRWG No. 1205/14 REVISION 5

- 1 Silver Birch - Betula Pendula  
Girth Size(cm) 8-10 Quantity 1  
Girth Size(cm) 18-20 Quantity 3
- 2 Rowan - Sorbus aucuparia  
Girth Size(cm) 8-10 Quantity 4
- 3 Field Maple - Acer campestre  
Girth Size(cm) 8-10 Quantity 2  
Girth Size(cm) 18-20 Quantity 2
- 4 Whitebeam - Sorbus aria  
Girth Size(cm) 8-10 Quantity 3  
Girth Size(cm) 18-20 Quantity 2

Copyright 2012 Paul Searle Architect Ltd.

v	Date	Initials	Description
-	5 Jan 2015	PJS	first issue.