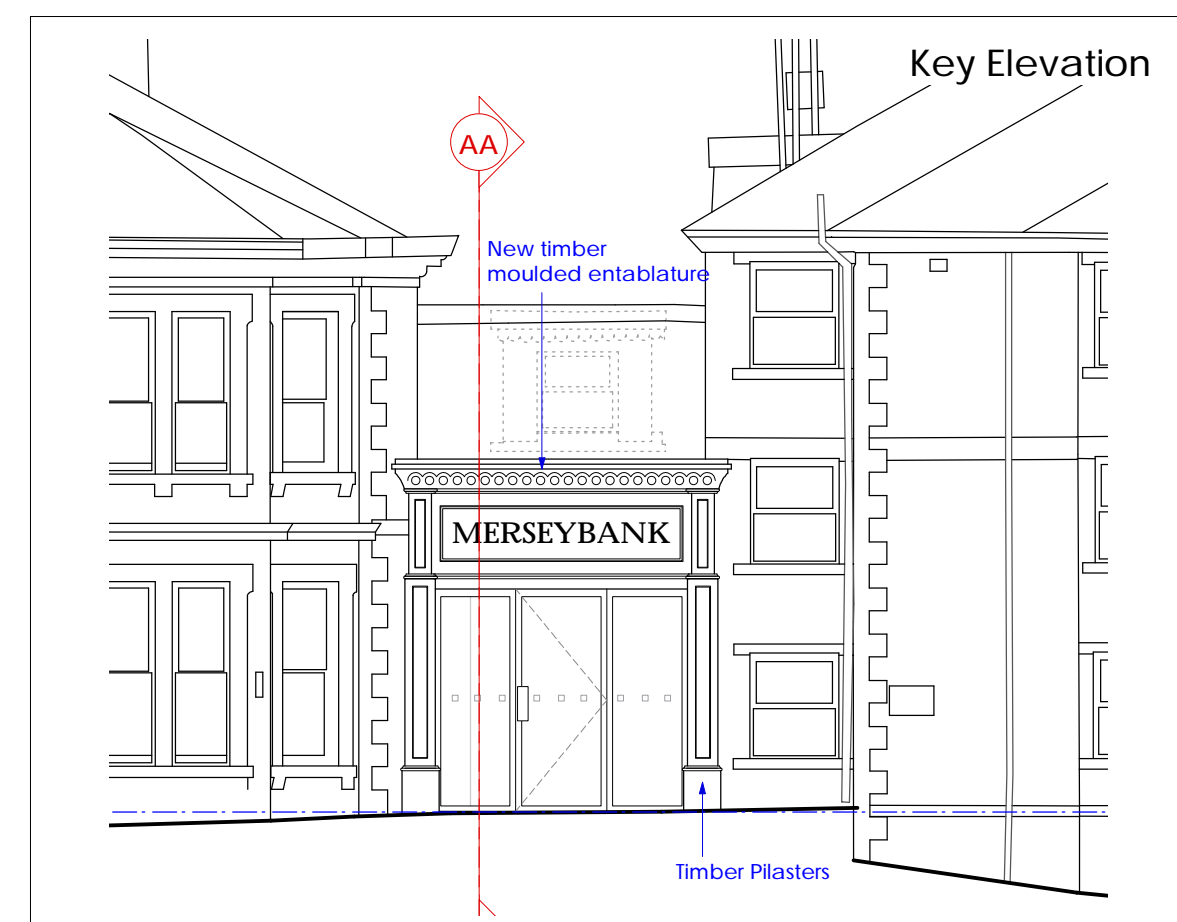
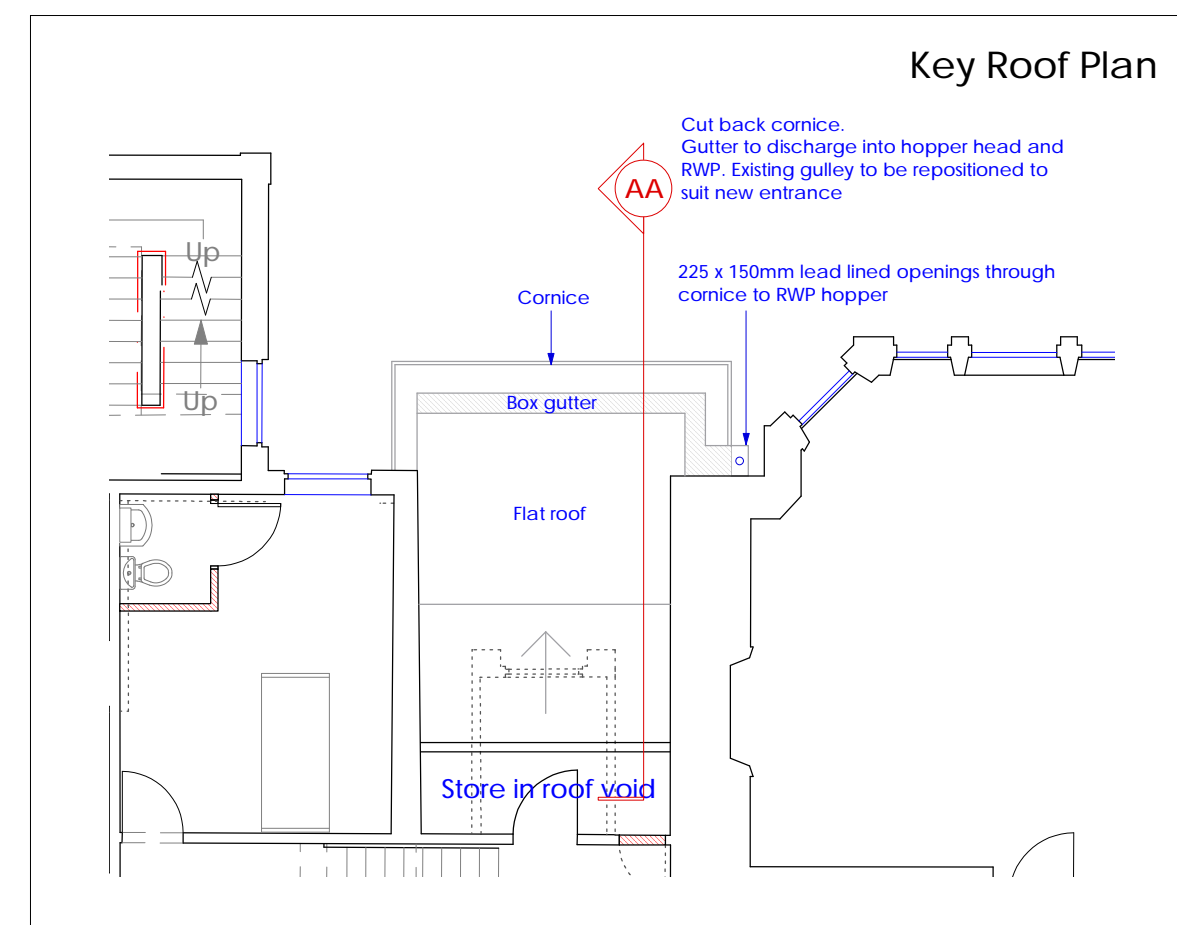
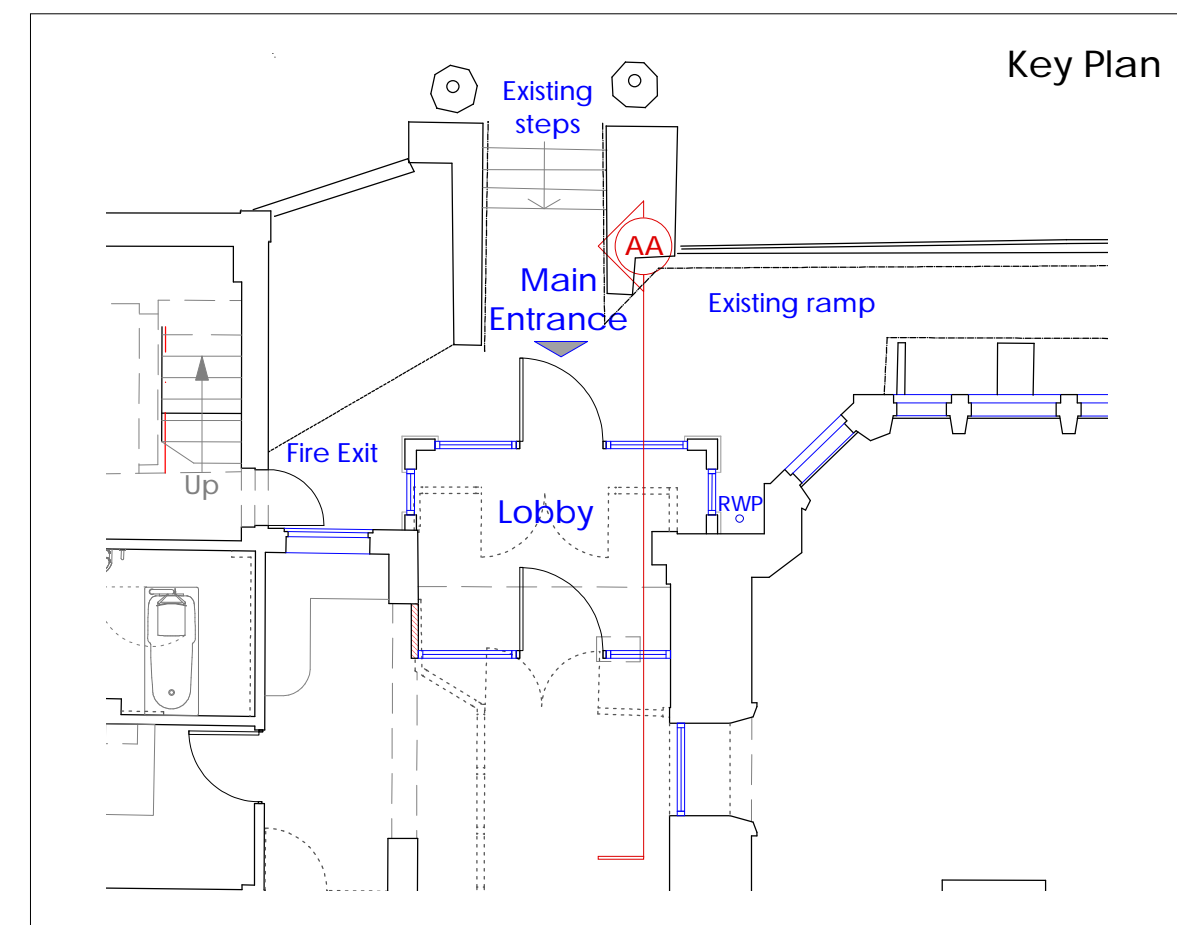


Joinery details by specialist
supplier/sub-contractor

All timber to glazed screens
to be stained, colour to be
agreed



- # NOTES
- © This drawing is copyright of Condy and Lofthouse Ltd. and may not be reproduced in any way without their specific permission.
- © All dimensions are to be checked on site. Do not scale from this drawing, work to figured dimensions only. Any queries please contact the architects.
- © This drawing has been prepared based upon a digital survey undertaken by XXXXX, tel 0000 0000 0000.
- ## MATERIALS PROHIBITED
- Materials prohibited from use, except where used in accordance with 'good practice in the selection of construction materials' (2002) or unless required by the Contract:
- a) high alumina cement in the structural elements;
 - b) wood wool slabs in permanent formwork to concrete;
 - c) calcium chloride admixtures in use in reinforced concrete;
 - d) asbestos or asbestos-containing products, as defined in the Control of Asbestos at Work Regulations, 1987 or any other statutory modification or re-enactment thereof;
 - e) any naturally occurring or man made mineral fibres (for example, rock-wool or slag wool) with a thickness of 3 microns or less and a length of 200 microns or less, if they are approximately sealed to prevent migration of fibres;
 - f) aggregates for use in reinforced concrete which do not comply with British Standard 1863: 1983 and/or aggregates for use in concrete which do not comply with British Standard 8110:1985;
 - g) lead, lead paint or any other materials containing lead which may be ingested, inhaled or absorbed, except where copper alloy fittings also containing lead are specifically required in drinking water pipework by any relevant statutory requirement or where lead flashings or other lead roof coverings are specifically provided for in the Contract;
 - h) urea formaldehyde foam or materials which may release formaldehyde in quantities which may be hazardous with reference to the limits set by the Health and Safety Executive;
 - i) calcium silicate bricks or tiles;
 - j) vermiculite unless it is established as being fibre-free; calcium silicate bricks or tiles;
 - k) any of the products containing cadmium that are referred to in the Environmental Protection (Controls on Inorganic Substances) (No 2) Regulations 1993;
 - l) any new timber treated with pentachlorophenol
 - m) non galvanised mild steel structural frames for building elements particularly susceptible to corrosion;
 - n) concrete used in circumstances where there is potential to alkali/silica reaction;
 - o) materials containing chlorofluorocarbons (CFC's);
 - p) solvent based paints, except where water based paints are unsuitable for unavoidable
 - q) any new materials not in accordance with statutory requirements, British Standards, Codes of Practice and good building practice current at the date of incorporation of the relevant materials into the Works or the Specifications thereof.

- ☐ ☐ ☒ First Issue 09-12-2014
- REVISION DETAILS** date / by
- ☐ Preliminary
- ☒ For Approval
- ☐ Tender
- ☐ Construction
- CLIENT**
- Pendlebury Care Homes Ltd
- PROJECT**
- Merseybank Care Home
The Carriage Drive, Hadfield, Hyde,
Derbyshire SK13 1PJ
- DRAWING TITLE**
- Indicative Section AA
- SCALE** drawn by date
- 1:20 @ A2 EB DEC 14
- DRAWING NO.** revision
- 14-080-160
- (*)