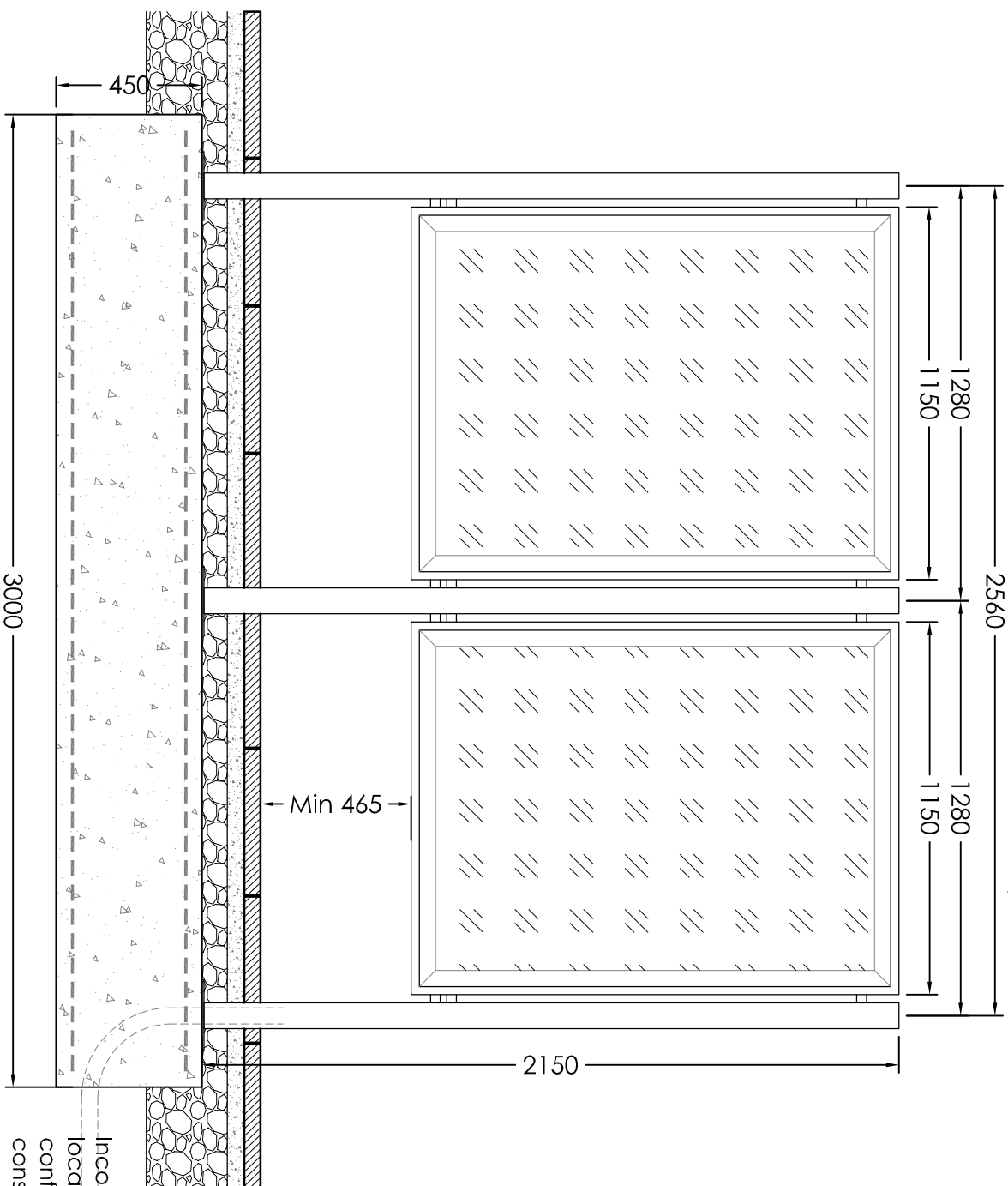
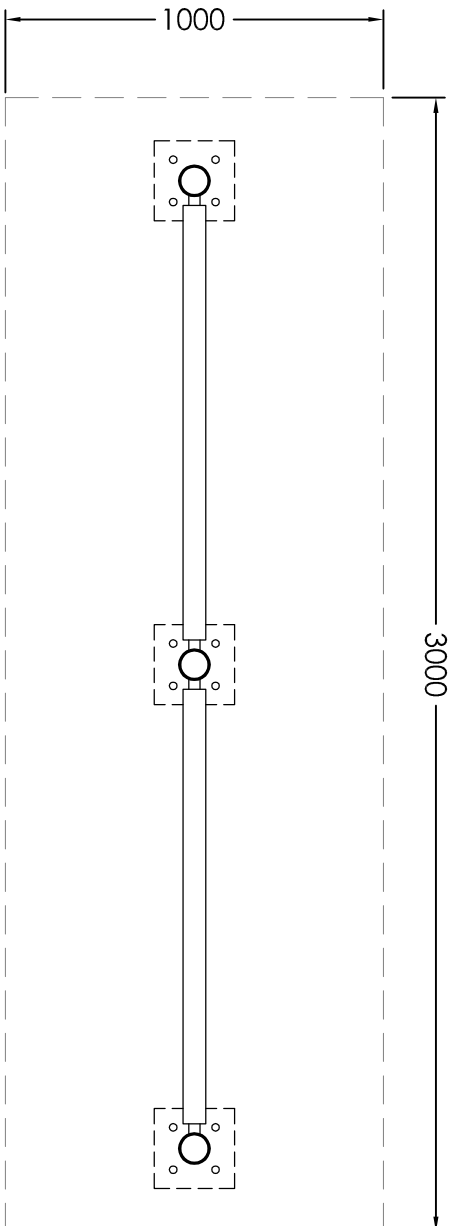


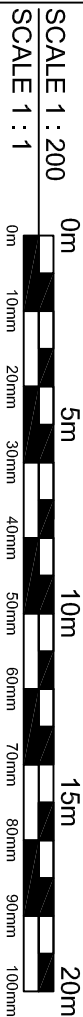
Sign Five



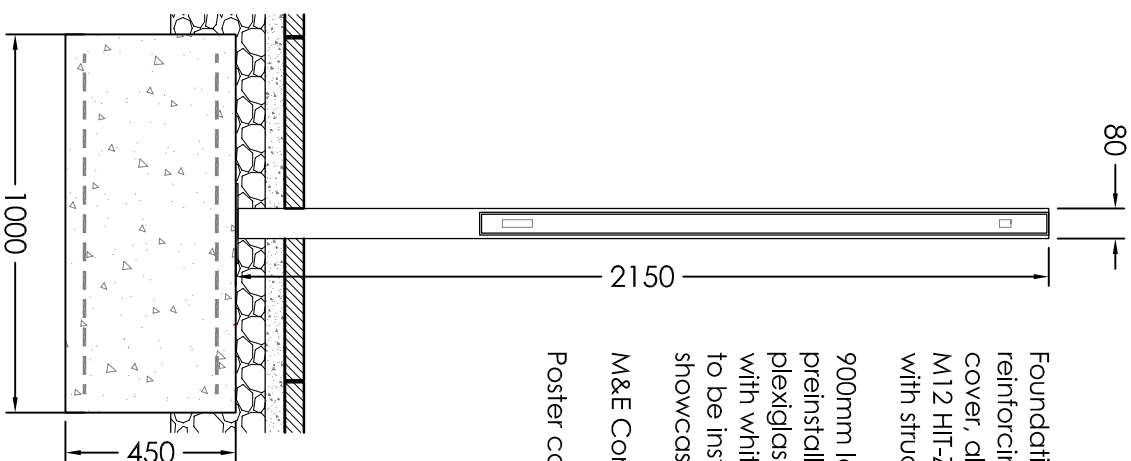
Sectional Elevation 1:20



Plan 1:20



CAD file reference J:\PROJECTS\0834MID\17.0 DWGS\1000 Series

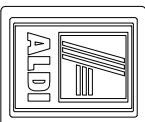


Foundation 3000L x 1000W x 450D concrete base with A193 reinforcing mesh top and bottom with minimum 50mm cover, all to allow posts to fix down via Hilti HIT-HY200 and M12 HIT-Z anchors with 100 embedment in accordance with structural engineers design and detail.

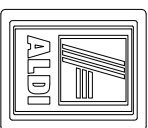
900mm long, 39 Watt, waterproof IP 65 electronic ballast preinstalled in showcase in colour 860. Text border in white plexiglass panel with cover plate for the electronic ballast with white aluminium finish. 230 Volt flexible surface heater to be installed to prevent condensation build up within showcase.

M&E Consultant to allow for electrical feed to Poster Board

Poster cases to be located adjacent to trolley bay

Rev	Date	Discription	Rev By	Chk By	
Project Title		PROPOSED FOODSTORE			
		BOWDEN LANE CHAPEL EN LE FRITH HIGH PEAK			
Client		ALDI STORE LTD			
Storus		PLANNING (ADVERTISEMENT)			
Scale	1:20	Drawing Size	A3		
Drawn By	LWEC	Checked By	HVS	Date	
				FEB / 14	
Drawing Title		POSTER CASE DETAILS			
Job/Dwg No	0834MID - 1004		Rev	-	

This drawing is copyright and may not be reproduced in whole or part without written authority. Do not scale off this drawing.



ARCHITECTS
www.harrispartnership.com