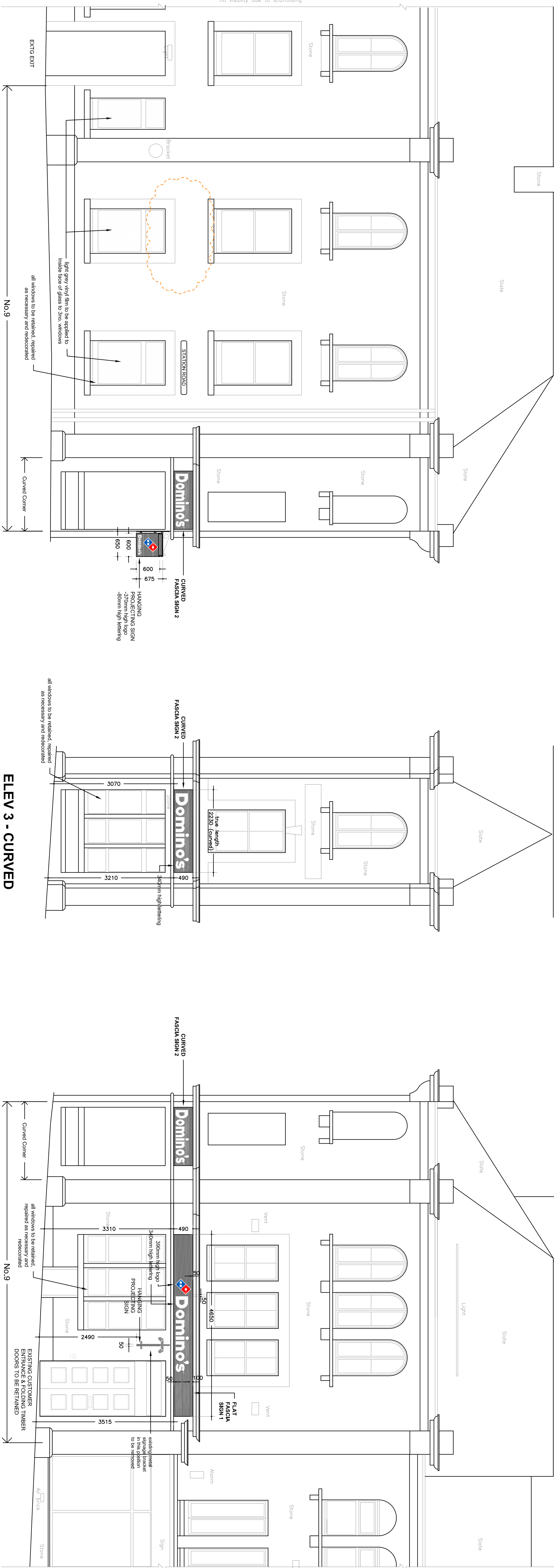


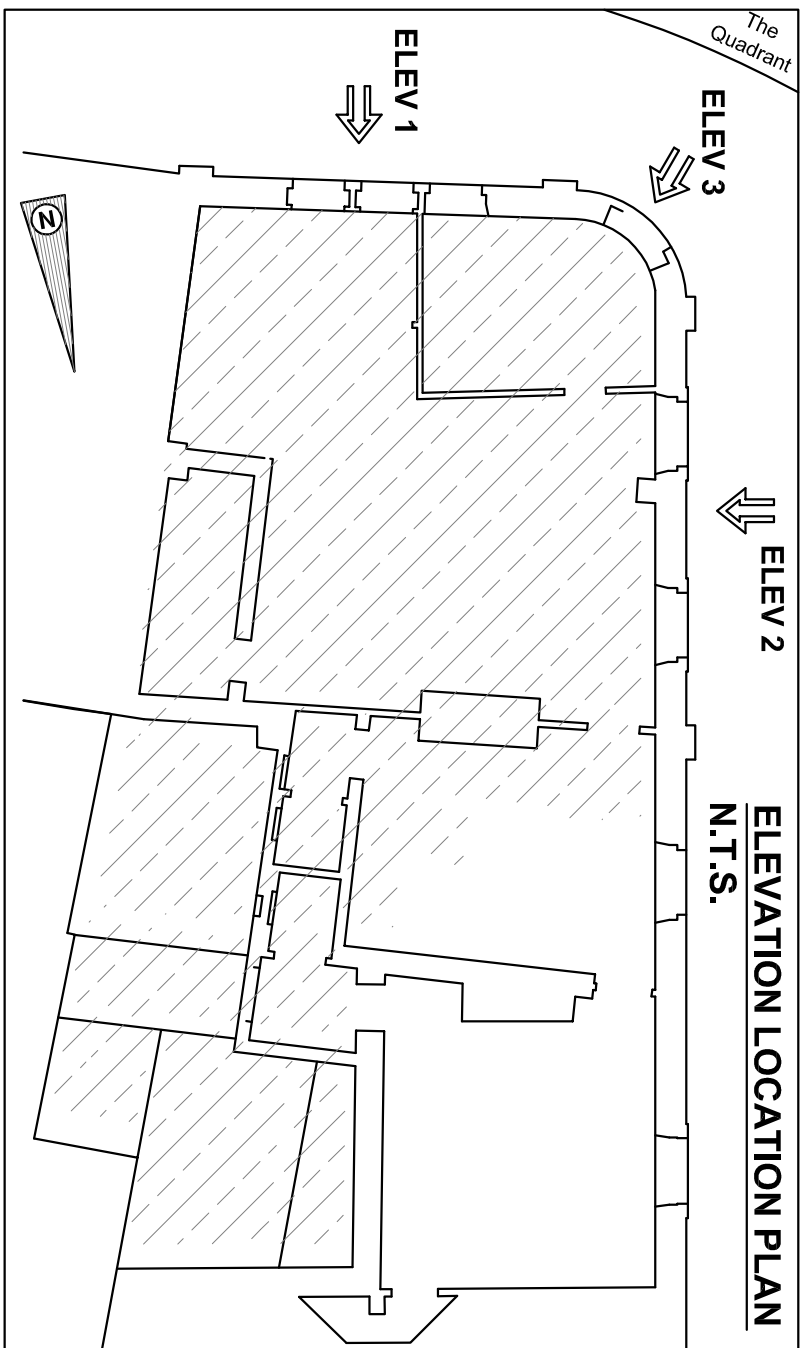
HANGING PROJECTING SIGN & FASCIA SIGN DETAILS  
scale 1:25



ELEV 2 - SIDE (west)

ELEV 3 - CURVED CORNER (south-west)

ELEV 1 - FRONT (south)



ELEVATION LOCATION PLAN  
N.T.S.

2no. "HALO" EXTERNALLY ILLUMINATED FASCIA SIGNS - 1no. flat and 1no. curved as shown.  
New signs to comprise individual pin-mounted stand-off stainless steel letters powder coated white, and reading "Domino's".  
Diamond logo to comprise pin-mounted stand-off stainless steel diamond with an applied 'vinyl' face - diamond logo 'vinyl' graphics in red/white/blue with a narrow yellow highlight surround.  
Back halo illumination, WHITE to lettering, YELLOW to diamond logo.  
Lettering and logo to be mounted on 800mm high x 25mm deep timber frame (to conceal electrical wiring) painted to match RAL 7043 Traffic Grey.

EXTERNALLY ILLUMINATED HANGING DOUBLE SIDED, TIMBER PROJECTING SIGN:  
Panel constructed from 25mm exterior grade plywood with 25mm x 12mm timber moulding all round, fitted to an aluminium support carcass all painted to match RAL 7043 Traffic Grey.  
The face of each panel is applied the tile logo to stone and Multi-Fix 7011 and stone tile Motec 9830-24 on white setting to stone white border all round, together with white Domino 'vinyl' letters.  
Illumination by 2no 80mm diameter extruded aluminium trough lights illuminated by LED power modules, suspended from projecting support arm with ornamental steel scrolled bracket painted RAL 7043 grey, trough light modules to be guaranteed for 2 years.

FASCIA SIGN SETTING OUT GUIDELINES

In order to create the right proportions between the lettering and logos on all the different building types, the following guidelines have been developed. These guidelines are to be followed in some cases the dimensions below may not be correct and you must always refer to the approved signage fit out plans for confirmation. Otherwise please contact the Design Team in Domino Property Department for clarification.

General setting out:

- N.B. Fascia sign has to be 500mm high, so SIGNLINE not required
- Lettering and logo setting out:
- Height of fascia
- Top of fascia to highest point of the logo
- Top of fascia to top of the "T" in Domino's
- Top of fascia to top of the logo
- Top of fascia to top of the logo

NOTES:

Domino logo must always be at 45deg.  
Single domino dot must always be at the top.  
A small Blue TM is to be incorporated at the bottom of the tile logo.  
A small White ® is to be incorporated at the top right hand side of the Domino's letter "s".

LUMINANCE:

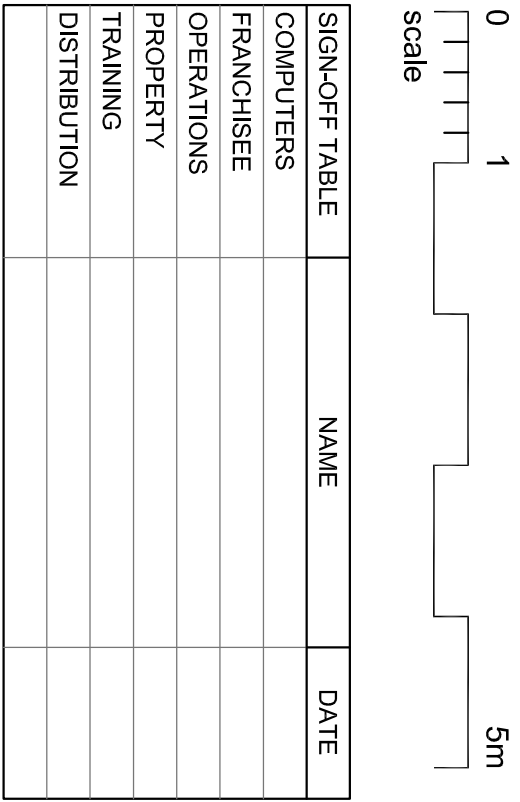
Maximum luminance of all signs is 200 candelas/m<sup>2</sup>.

WINDOW FILM:

Applied internally for security/privacy. Light grey opaque film elsewhere as indicated.

NOTES:

ALL SIGNAGE TO BE DESIGNED IN ACCORDANCE WITH THE LATEST COVENTRY PIZZA & ICE CREAM LIMITED IMAGE GUIDELINES. Specialist sign support details to be supplied by specialist signage contractor. Main contractor to provide suitable flat grounds and electrical power tails for the signage. Projecting signage to have a minimum clearance of 2.5m above the ground. Signage to be installed in accordance with the Public Highway Act 1980. The consent of the property owner is required under the Town & Country Planning Act 1990 Town & Country Planning (Control of Advertisements) Regulations 20



REVISION	AMENDMENTS	DATE	CHD
A	Signage details added	20.1.14	
B	General alterations to all approved Change of Use drawings	8.6.14	
C	Minor alterations to all new shop front as per Handlines Signage Project 22.4.14	10.6.14	
D	Final contract from architect on west elevation	13.6.14	
E	Final sign 3 submitted. Final sign updated to the handlines. All signs changed to black.	20.6.14	
F	Final sign 3 submitted as amended by handlines 20.6.14	20.6.14	

DOMINO'S PIZZA UK & IRELAND LTD 9 The Quadrant, Buxton Derbyshire SK17 6AW (ID: 13/124)	
---	--

SCALE 1:50	A1
CONTRACTORS MUST VERIFY ALL DIMENSIONS ON SITE BEFORE COMMENCEMENT OF ANY WORK OR PREPARING MANUFACTURING DRAWINGS. ANY DISCREPANCIES ON THE DRAWINGS ARE TO BE NOTIFIED TO THE HATTRELL DS ONE ARCHITECTS LLP IMMEDIATELY.	
DATE 7.1.14	DRAWN BY Vlamis
APPROVED BY	ISSUED TO SITE

PROPOSED SIGNAGE	4900-SF03	F
HATTRELL DS One Architects LLP		
CHARTERED ARCHITECTS		
COVENTRY	MANCHESTER	
UNIT 20, ENGIN BUSINESS CENTRE, WESTWOOD WAY, WESTWOOD BUSINESS PARK, COVENTRY, CV4 5JA		
T: 024 7647 3974		
ARTHUR HOUSE, CHORLEY, MANCHESTER, M1 3EL		
T: 0161 226 9251		