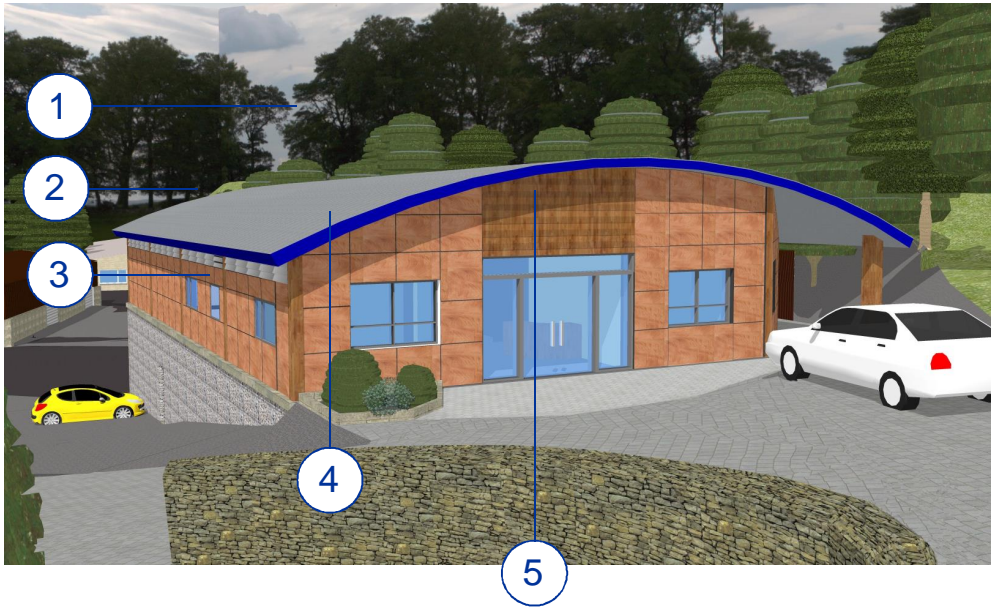


Materials Proposal

Office and Warehouse

Carr Brooks Works, Whaley Bridge



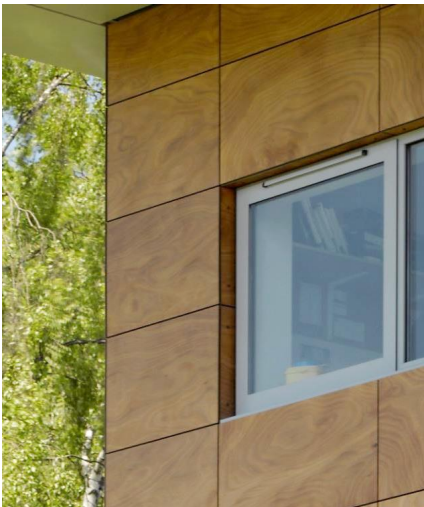
The Proposed Office and Warehouse is intended to create a new public face to the site, in a contemporary style.



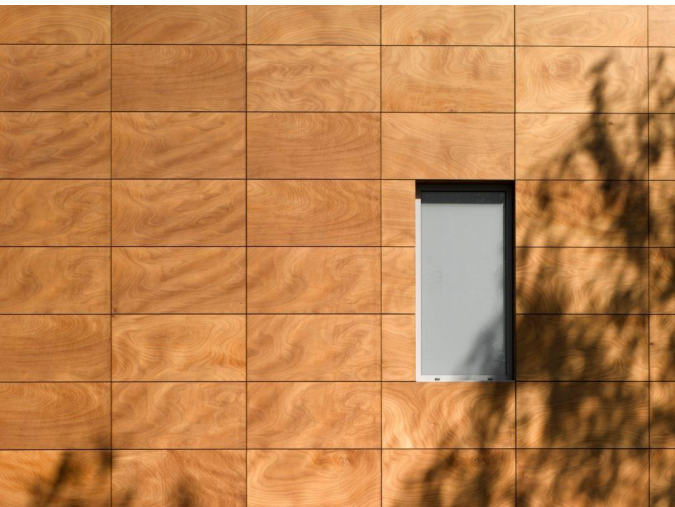
1 Euroclad Standing Seam Roof:
Plain Mill stucco embossed Aluminium



4 Kingfisher Aluminium Louvre:
KW anodised aluminium multiple-bank louvre



2 Kingspan Benchmark Cladding System: Wood
Composite in Rustic: Lazio 1



5 Russwood Scotlarch Cladding:
Kiln dried untreated Larch boards



3 Enviromesh Gabion 27 System:
Bi-axial welded mesh baskets: Local stone fill

