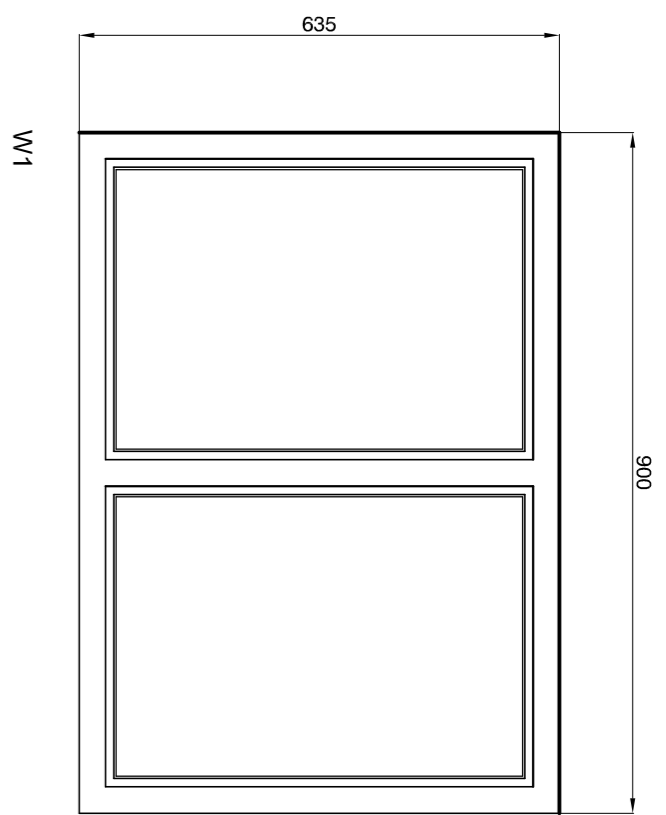
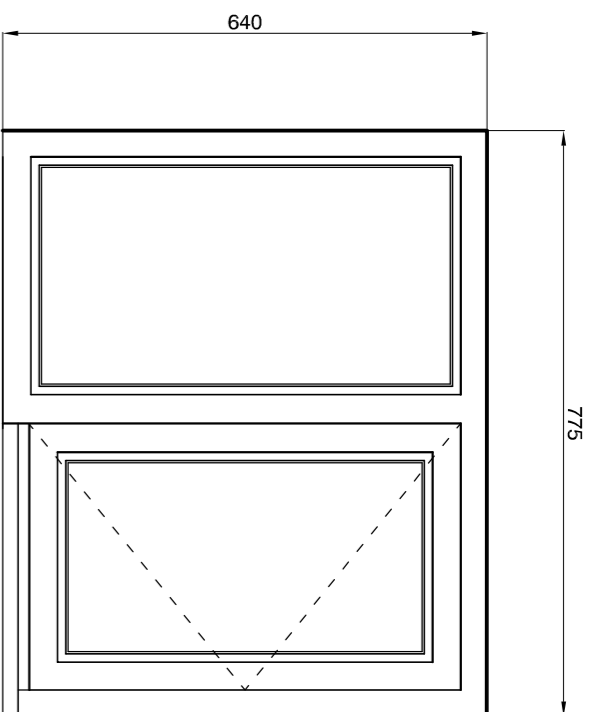


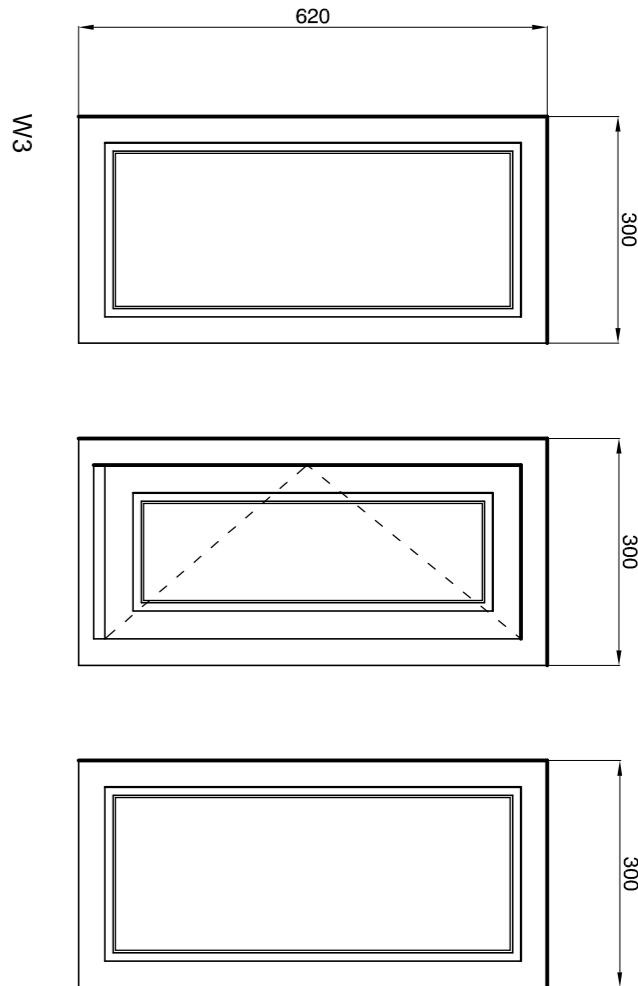
TYPE 1:  
W1



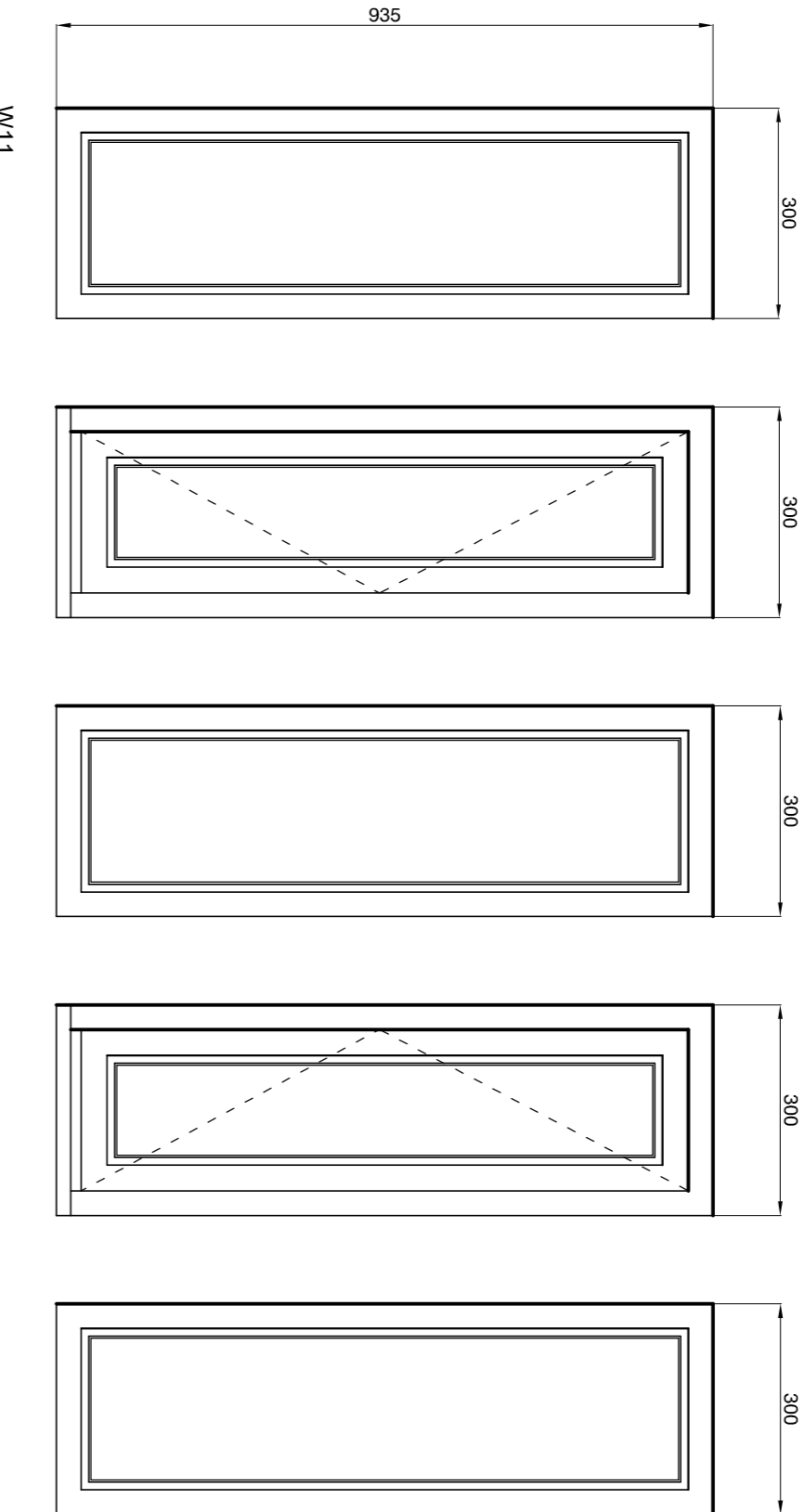
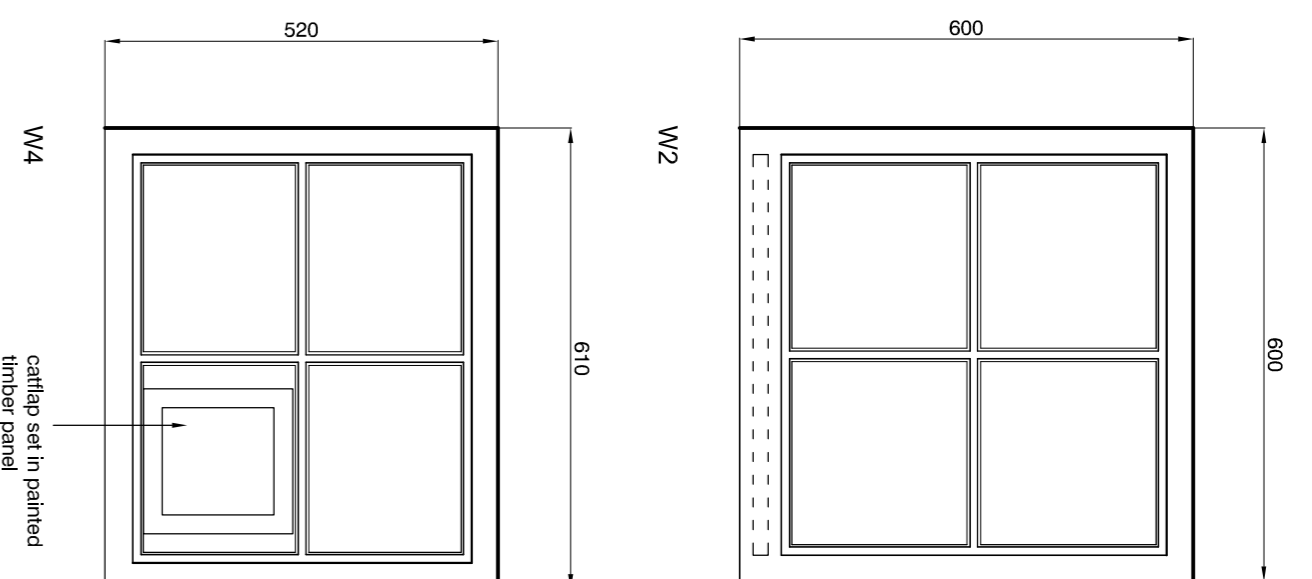
TYPE 5:  
W13



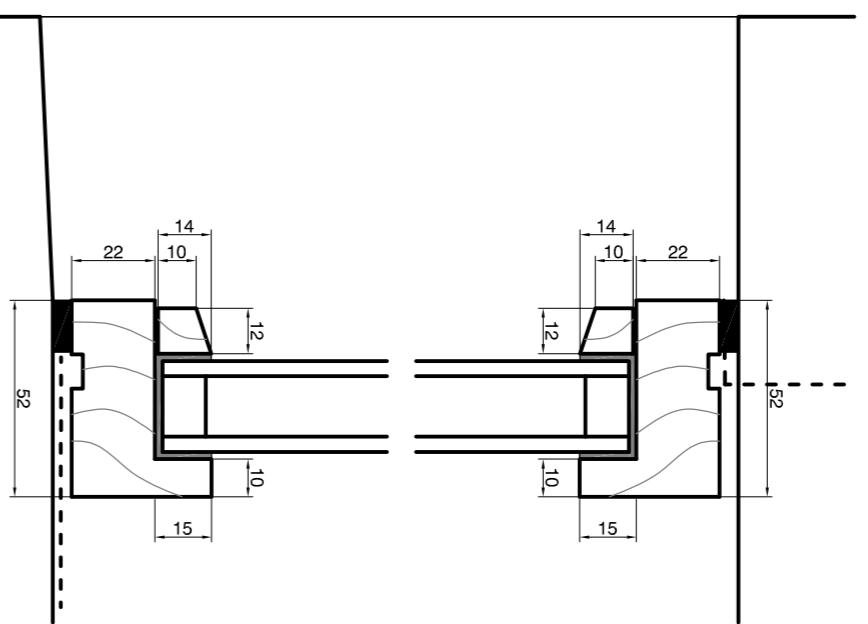
TYPE 2:  
W3, W11, W17, W18, W19, W20



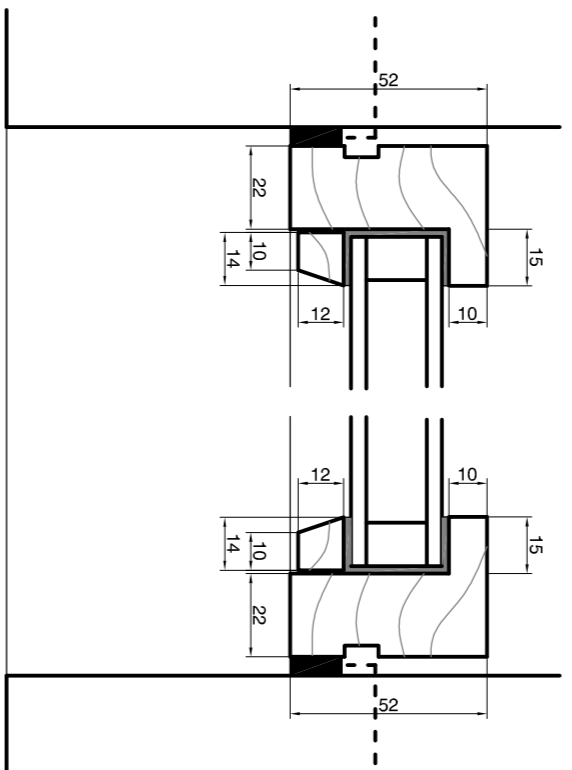
TYPE 6:  
W2, W4



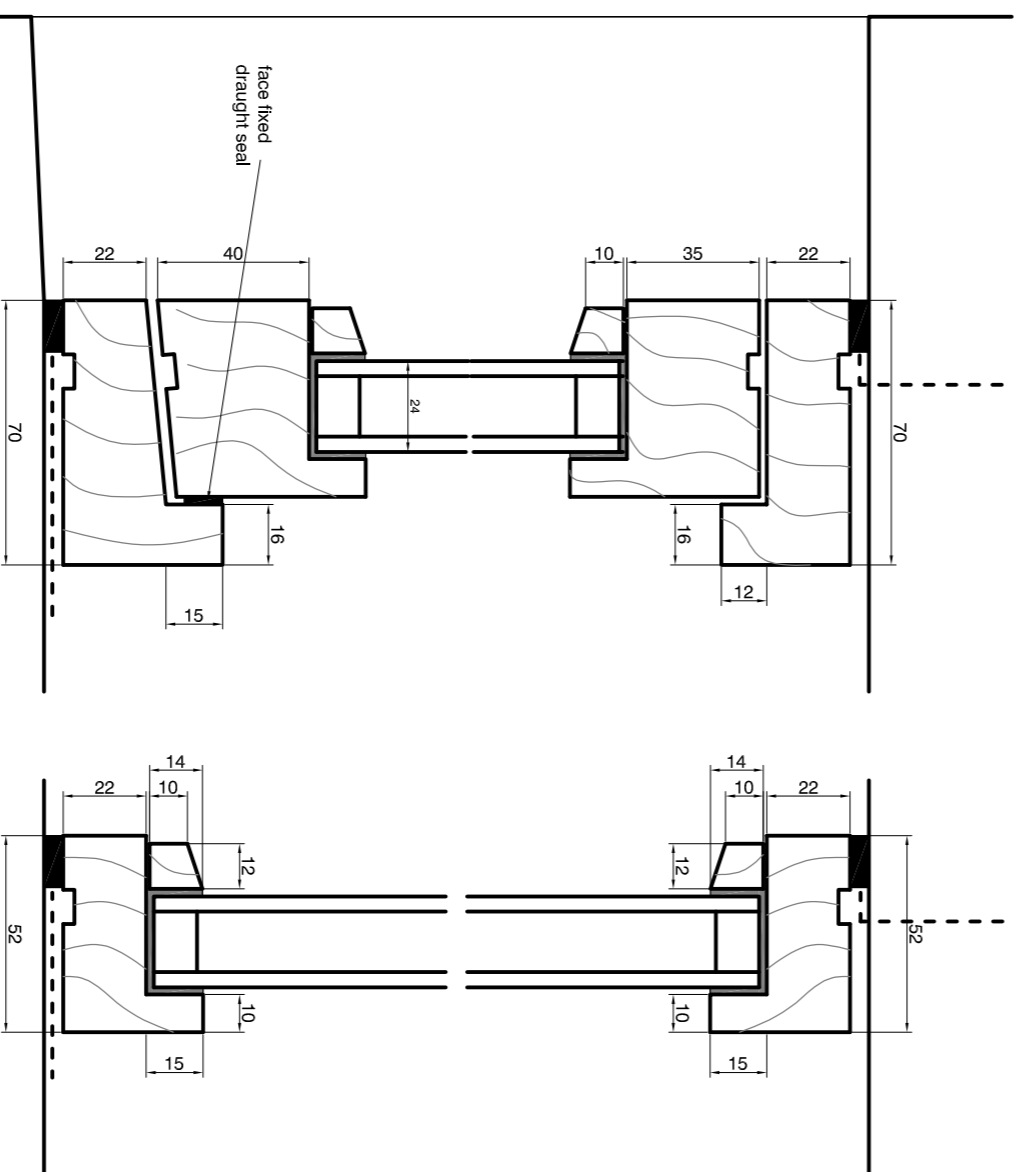
TYPE 1 DETAIL SECTION



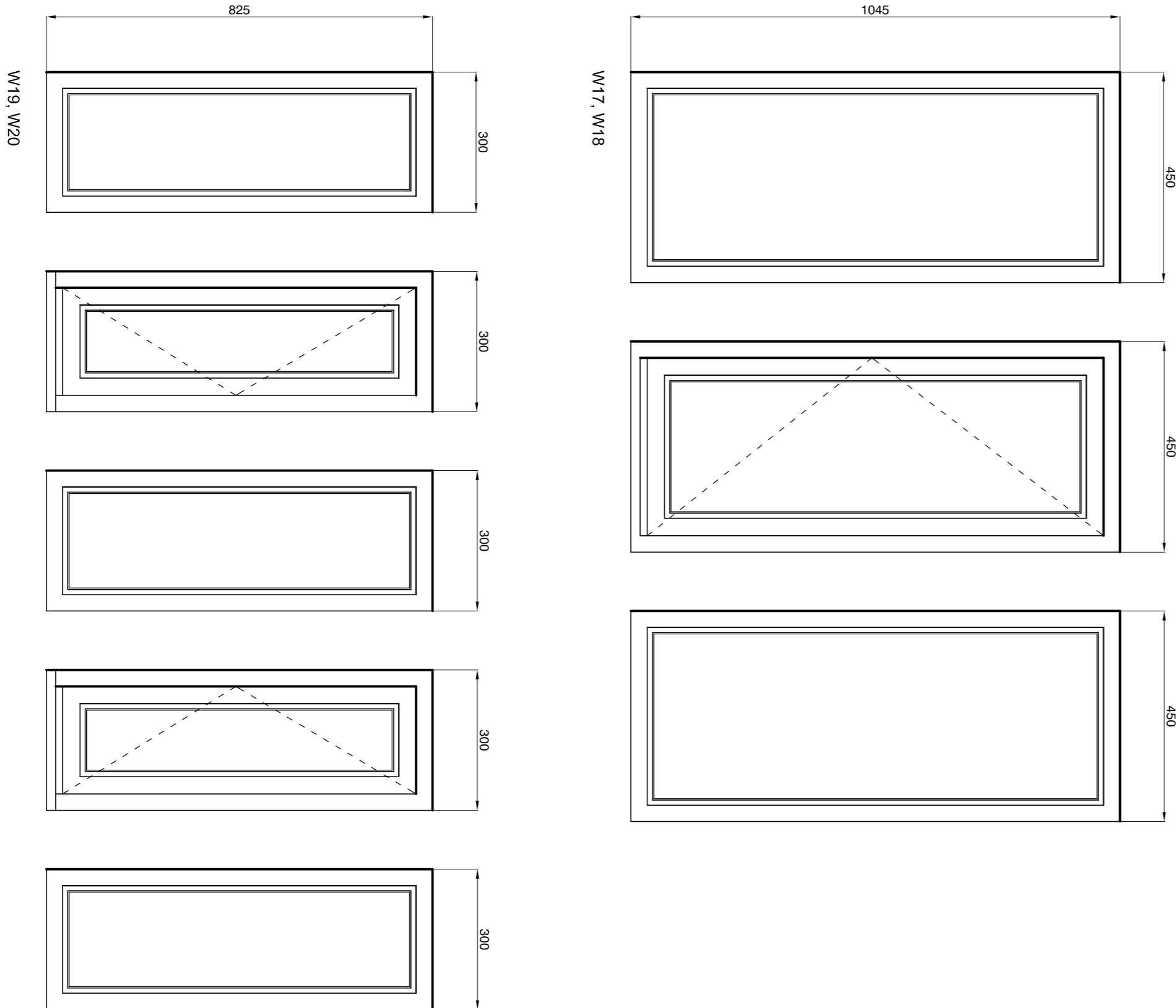
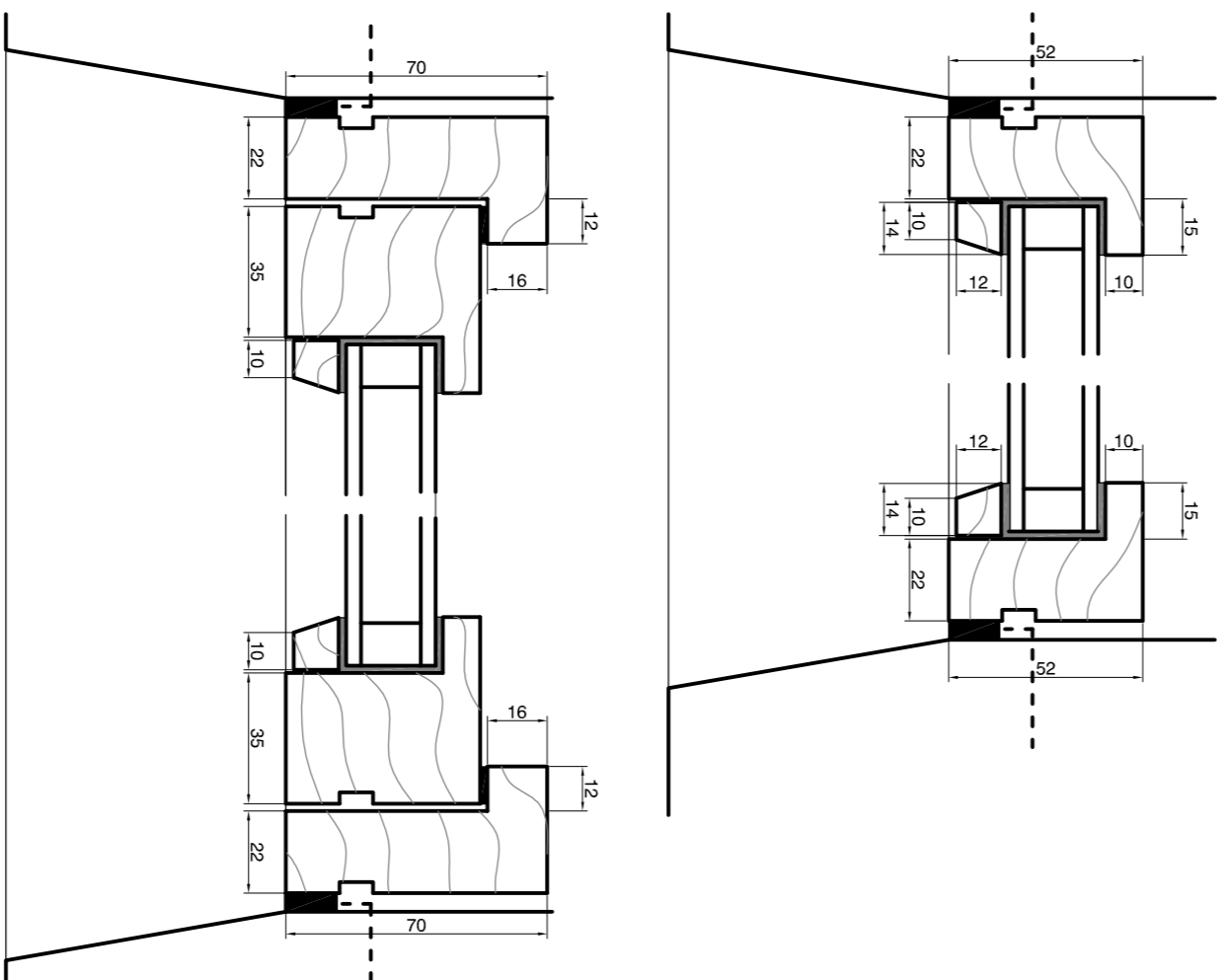
TYPE 1 DETAIL PLAN



TYPE 2 AND TYPE 5 DETAIL SECTION  
AT FIXED AND OPENABLE WINDOWS



TYPE 2 AND TYPE 5 DETAIL PLAN  
AT FIXED AND OPENABLE WINDOWS



NOTES:

Opening sizes relate to existing internal opening dimensions. 15mm has been added to all vertical heights. Internal finishes not shown on details. All structural openings to be checked by manufacturer prior to manufacture.

Casement windows to have stormproof hinges, weatherseals (white), locking with night vent facility.

Detail generally to match existing window W10 previously approved by Conservation Officer.

All windows to be double glazed to achieve a minimum of 1.6W/m<sup>2</sup>k unless stated otherwise.

All windows to be hardwood (marante or similar hardwood from FSC source), primed in the factory. If full factory glazed allow finish of 3 coats microporous paint.

Bituminous felt dpc and mastic sealant to heads, jambs and cills of all external openings (min 150 girth) primed forward to all window and door openings. Location of dpc on dwgs indicative only - to be agreed on site once existing window / door removed.

Ensure all existing cills fall away from the window. Window to be set back min 75mm at jamb.

Toughened safety glazing to all glazing in windows below 800mm above finished floor level.

Detail to be advised by window manufacturer and agreed with Conservation Officer.

WINDOW TYPES

TYPE 1 - FIXED LIGHT CASEMENT	W1
TYPE 2 - FIXED AND OPENING CASEMENTS IN GROUPS OF 3 OR 5 WITH STONE MULLIONS BETWEEN	W3, W11, W17, W18, W19, W20
TYPE 3 - SLIDING SASH	W7, W8, W9, W15 (partial), W16
TYPE 4 - FIXED SASH	W5, W6, W15 (partial)
TYPE 5 - CASEMENTS WITH 2 LIGHTS	W12, W13, W14
TYPE 6 - SPECIALS	W2, W4

Rev B: 08.08.12 W12 and W14 omitted, plan details added, Type 6 included in window schedule sheet 1'  
Rev A: 12.06.12 Glazing bars added to W12 and W14, Type 5 blue glazing bar detail added