

FOR INTERNAL USE ONLY

Site Name: Chapel En Le Frith

Site No: 2155

Address: 9 Market Street, Chapel En Le Frith, SK23 0HL

Drawing No: SAN01-RBS-2155-V-Rev A

Drawn By: Marc Bayliss

Date: 27/10/11

Revision Details:

Rev A 14/05/12	Letter height reduced to 350mm high, descaled stainless steel finish and non illuminated. L2 to L3

CLIENT APPROVAL:

Date Reviewed: _____

Reviewed By: _____

Any changes requested by the client to be detailed below:

Scheme Approved (subject to any changes detailed above):

Signed On Behalf Of Client



Proposed Elevation Signage

Site Name: Chapel En Le Frith

Site No: 2155

Proposed Signage

A Sign Type L3

Individual Non-Illuminated letters.
Constructed from 20SWG descaled stainless steel, fitted with brass locators

Text Height: 350mm Text Span: 1946mm
Letters left natural finish.

NOTE: Stone to be made good

B Sign Type P1 + P1a shroud

Aluminium projecting sign. Panels from 14g aluminium powder coated red Ral 3020. Panels fret cut to accept step inlaid opal 050 acrylic logo. Sign externally illuminated by aluminium light trough powder coated red Ral 3020, containing Tridonic Talexx Engine Image LED system and acrylic diffuser.
Shroud fabricated from aluminium, powder coated black.
Size: 700mm x 600mm

C ATM Details

C1 Flat aluminium panel finished blue to cover existing text

C2 Acrylic header panel finished red, with Santander text



Proposed Elevation Signage
Scale 1:100 @ A3

Site Name: Chapel En Le Frith

Site No: 2155

Proposed Signage

A Sign Type L3

Individual Non Illuminated letters.
Constructed from 20SWG descaled stainless steel, fitted with brass locators

Text Height: 350mm Text Span: 1946mm
Letters left natural finish.

NOTE: Stone to be made good

B Sign Type P1 + P1a shroud

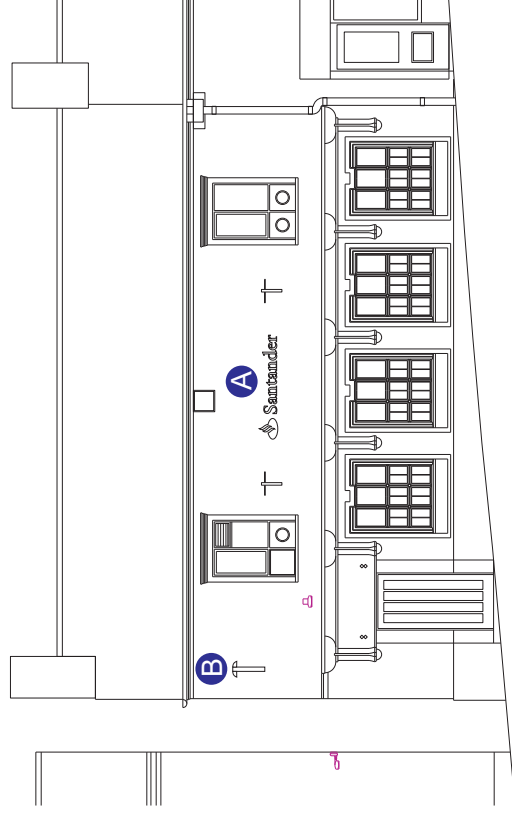
Aluminium projecting sign. Panels from 14g aluminium powder coated red Ral 3020. Panels fret cut to accept step inlaid opal 050 acrylic logo. Sign externally illuminated by aluminium light trough powder coated red Ral 3020, containing Tridonic Talexx Engine Image LED system and acrylic diffuser.

Shroud fabricated from aluminium, powder coated black.
Size: 700mm x 600mm

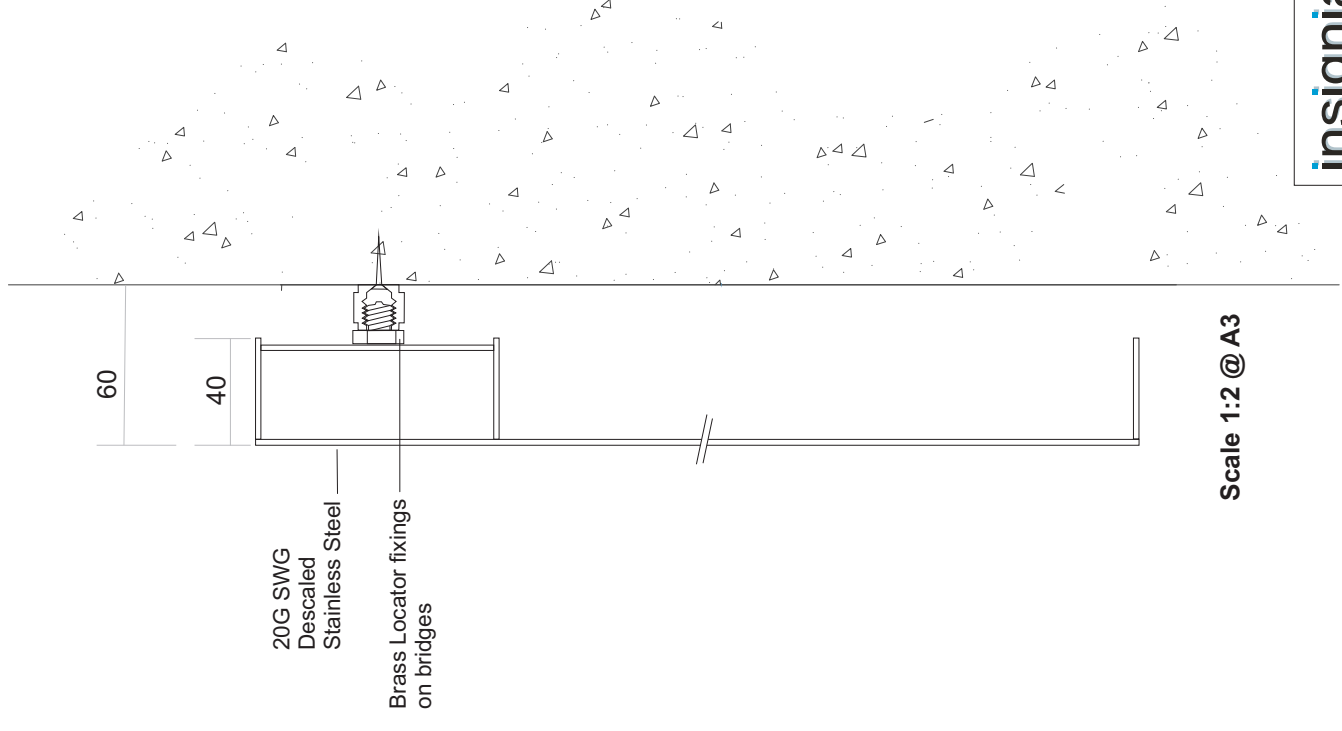
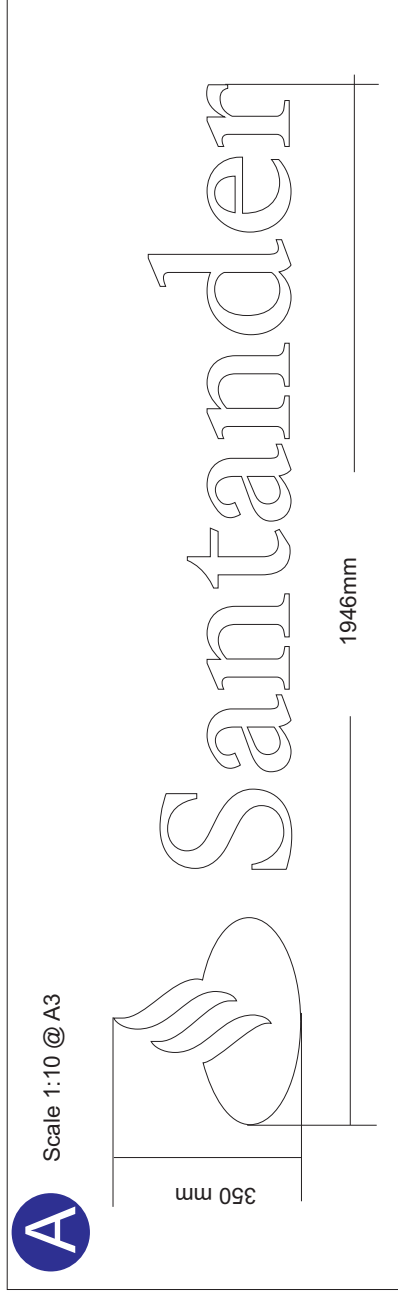
C ATM Details

C1 Flat aluminium panel finished blue to cover existing text

C2 Acrylic header panel finished red, with Santander text



Sign Type L3 - Construction details



Scale 1:2 @ A3