

Sparta T5 and Angle Sparta T5

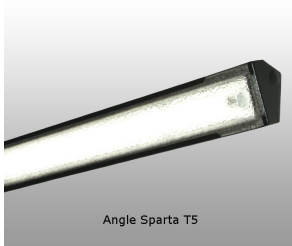
IP44 / IK10 (Polycarbonate version)



(Class II available to special order)



Sparta T5



Angle Sparta T5

Ideal for areas not prone to acts of severe abuse and for semi-exposed locations

Based upon the proven and successful T8 design T5 Sparta offers the neat clean lines of the original fitting but now in a size especially created for T5 lamp technology. T5 Sparta provides protection against accidental knocks and low level vandalism in a slim neat package and without the unsightly clips that an all polycarbonate fitting requires. A degree more security can be achieved by the addition of "Security End Plates" to prevent easy unauthorised removal of diffuser.

Surface, semi-recess and angle mount, anti corrosive, vapourproof. Zinc-coated steel body finished in chemical and abrasion resistant textured black polyester powder coat.

High frequency control gear mounted upon removable tray.

Plug and socket fused connector block to ease installation & maintenance.

Provision for conduit entry in back and at ends, gaskets provided.

Diffuser in clear patterned polycarbonate sprung into gasketed slots along sides and ends of body.

SURFACE

T5 HE

D815/128T5B	1x28w	4.00kg	1225mm
D815/228T5B	2x28w	4.00kg	1225mm
D815/135T5B	1x35w	5.00kg	1525mm
D815/235T5B	2x35w	5.00kg	1525mm

Semi Recess add suffix **SR**

T5 HO

D815/154T5B	1x54w	4.00kg	1225mm
D815/254T5B	2x54w	4.00kg	1225mm
D815/149T5B	1x49w	5.00kg	1525mm
D815/249T5B	2x49w	5.00kg	1525mm

Semi Recess add suffix **SR**

ANGLE

T5 HE

D832/128T5B	1x28w	4.00kg	1225mm
D832/228T5B	2x28w	4.00kg	1225mm
D832/135T5B	1x35w	5.00kg	1525mm
D832/235T5B	2x35w	5.00kg	1525mm

T5 HO

D832/154T5B	1x54w	4.00kg	1225mm
D832/254T5B	2x54w	4.00kg	1225mm
D832/149T5B	1x49w	5.00kg	1525mm
D832/249T5B	2x49w	5.00kg	1525mm

Options/Notes

Security end plates to prevent easy unauthorised removal of diffuser add suffix **SP**

For semi-recess on surface version add suffix **SR** (Recess size: length +10x110x45mm)

Blank ends to body add suffix **585**

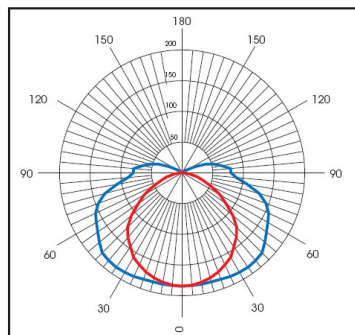
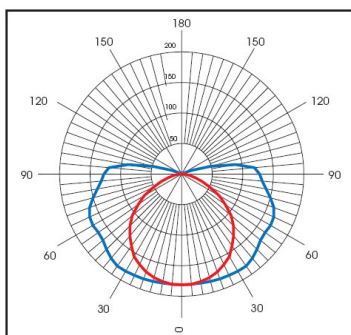
For white finish delete **B** and add suffix **W**

For grey finish to BS18B25 delete **B** and add suffix **G**

Self-contained 3 hour emergency facility on PL versions add suffix **058**

For auto-test facility on the emergency circuit add suffix **M5780**

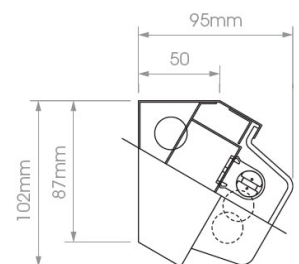
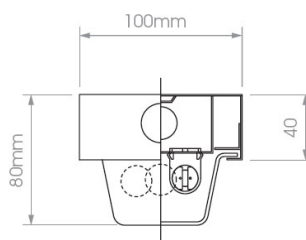
LED versions available



ULOR = 0.10

DLOR = 0.78 TWIN D832 (orientate for angle)

ULOR = 0.09 DLOR = 0.76





Products

Products from the ZXU1 range

Lamp

- High Pressure Sodium 50W/70W/100W tubular.
- Ceramic Metal Halide 35W/70W tubular.
- CosmoPolis 45W/60W CPO-TW.

Control Gear

- Fitted within lantern body.

Protection

- Self-resetting thermal cut-out fitted in ballast.
- Timed cut out ignitor.

Optical Unit

- Sealsafe® comprising asymmetric reflector type 1200, 1543, 1627 or 1770 with flat glass, dished polycarbonate, or deep bowl protector. Sealed to a tightness rating of IP66.
- Sealsafe® comprising reflector type 1317 (asymmetric) with polycarbonate refractor bowl. Sealed to a tightness rating of IP66.

Canopy

- Injected acrylonitrile polystyrene (ASA) protective cover, mid grey in colour, and protecting lantern interior to a rating of IP54. Secured by four clips and two retained thumb-screws.

Body

- High pressure die-cast aluminium with polyester powdered coated paint finish.

NEMA

- Fitted to canopy (using watertight gasket and 4 non-corrodible screws), and wired to lantern control gear.

Installation Information

Mounting:

- Horizontal on a 48mm, 42mm or 32mm diameter bracket arm with 95mm penetration. Locking by means of two M10 stainless steel Allen screws.
- Vertical on a 60mm or 76mm diameter column with 85mm penetration. Locking by means of two

M10 stainless steel Allen screws.

Photometric Centre:

- Distance from back of lantern to photometric centre: 0.40m

Dimensions:

- Height (with flat glass protector): 163mm
- Height (with dished poly protector): 172mm
- Height (with polycarbonate refractor bowl): 231mm
- Height (with clear deep bowl): 239mm
- Width: 290mm
- Length: 636mm

Weight: (Indicative maximum weights including lamp and control gear)

- High Pressure Sodium 50W: 6.1kg
- High Pressure Sodium 70W: 6.3kg
- High Pressure Sodium 100W: 6.6kg

Projected Side Area:

- 0.081m² (Flat Glass)
- 0.087m² (Dished Polycarbonate)
- 0.105m² (Polycarbonate Refractor)
- 0.106m² (Deep Bowl)

Inclination:

- Side-entry: 0° from horizontal
- Post-top: 5°, or 0° if supplied with factory fitted shim

Options

Design

- Body painted to any RAL or AZKO colour
- Canopy available in Black, Light Grey, Mebon Green (RAL 6013). Other RAL colours available with orders over approximately 2500 units.
- Canopy clips removed to provide flush finish (attachment by thumbs screws only)
- 0° inclination when post-top mounted

Lamp & Gear

- Metal Halide lamp packages
- Mercury vapour lamp packages
- White Sodium lamp packages
- Miniature photocell
- Remote gear
- Electronic control gear

Ecodesign compliance statement

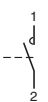
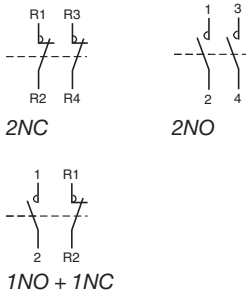
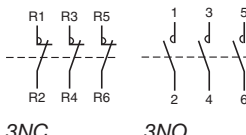
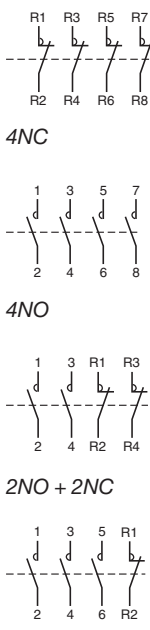




© 2011 Urbis Lighting Limited. A member of the Schröder Group GIE. Use of this web site is subject to our Terms and Conditions



50 Hz contactors

Type	Contact	Rating (A)	Voltage (V AC)	Width in mod. of 9 mm	Part number	
1P  1NO	1NO	16	12	2	16110	
	1NO	16	24	2	16111	
	1NO	16	230 240	2	16113	
	1NO	25	230...240	2	15958	
2P  2NC 1NO + 1NC	2NO	16	12	2	16114	
	2NO	16	24	2	16115	
	2NO	16	230...240	2	15957	
	1NO+1NC	16	12	2	16125	
	1NO+1NC	16	24	2	16126	
	1NO+1NC	16	230...240	2	15956	
	2NO	25	24	2	16020	
	2NO	25	230...240	2	15959	
	2NC	25	230...240	2	15960	
	2NO	40	220...240	4	15966	
	2NO	63	24	4	16024	
	2NO	63	220...240	4	15971	
2NO	100	220...240	6	15977		
3P  3NC 3NO	3NO	16	220...240	4	16120	
	3NO	25	220...240	4	15961	
	3NO	40	220...240	6	15967	
	3NO	63	220...240	6	15972	
	4P  4NC 4NO 2NO + 2NC 3NO + 1NC	2NO+2NC	16	24	4	16129
		4NO	16	220...240	4	16124
2NO+2NC		16	220...240	4	16130	
4NO		25	24	4	16022	
4NO		25	220...240	4	15962	
4NC		25	24	4	16023	
4NC		25	220...240	4	15963	
2NO+2NC		25	220...240	4	15964	
4NO		40	220...240	6	15968	
4NC		40	220...240	6	15969	
4NO		63	24	6	16025	
4NO		63	220...240	6	15973	
4NC		63	24	6	16026	
4NC		63	220...240	6	15974	
2NO+2NC	63	220...240	6	15975		
3NO+1NC	63	220...240	6	15976		
4NO	100	220...240	12	15978		

Auxiliary: ACTo+f, ACTp, ACTc, ATet.