

Copyright in this drawing is the property of Jackson Coulson Partnership. It is not to be reproduced, stored in a retrieval system, or transmitted in any form or by any means, electronic, mechanical, photocopying, recording, or otherwise, without the express consent in writing of Jackson Coulson Partnership.

All dimensions are in mm unless otherwise stated.

All works shall be carried out in accordance with the Specification. Contractor must verify all dimensions on site before commencing any works or shop drawings.

For Jackson Coulson Partnership standard symbols refer to the relevant Specification.

PRIOR TO COMMENCEMENT OF WORK ALL SETTING OUT DIMENSIONS ARE TO BE CHECKED AND VERIFIED.

ALL WATER DISTRIBUTION SYSTEMS MUST BE CORRECTLY FLUSHED OUT PRIOR TO BEING COMMISSIONED. THE FOLLOWING RECOMMENDATIONS ARE OF PARTICULAR IMPORTANCE:

ALL RESTRICTIONS WITHIN THE SYSTEM MUST BE REMOVED OR NOT INSTALLED PRIOR TO FLUSHING THE SYSTEM TO ENSURE THAT SUFFICIENT VELOCITY IS MAINTAINED TO CLEAN THE PIPEWORK.

EXCESSIVE AMOUNTS OF FLUX SHOULD NOT BE USED. DISSIMILAR METALS SHOULD NOT BE USED IN PIPEWORK SYSTEMS WITHOUT TAKING APPROPRIATE PRECAUTIONS AGAINST THE FORMATION OF CORROSION POCKETS.

ALL FITTINGS TO BE 'WEAS' APPROVED.

SAMPLING TO BE CARRIED OUT NO EARLIER THAN 48 HOURS FOLLOWING DISINFECTION.

ALL WATER OUTLETS, PARTICULARLY ANY SPRAY FITTINGS (TAPS OR SHOWERS) SHOULD BE KEPT FREE FROM THE BUILD UP OF A BIOFILM.

WHERE PARTS OF THE SYSTEM ARE LEFT UNUSED FOR EXTENDED PERIODS OF TIME PROVISION SHOULD BE MADE SO THAT IT CAN BE DISINFECTED BEFORE BEING PUT BACK INTO USE.

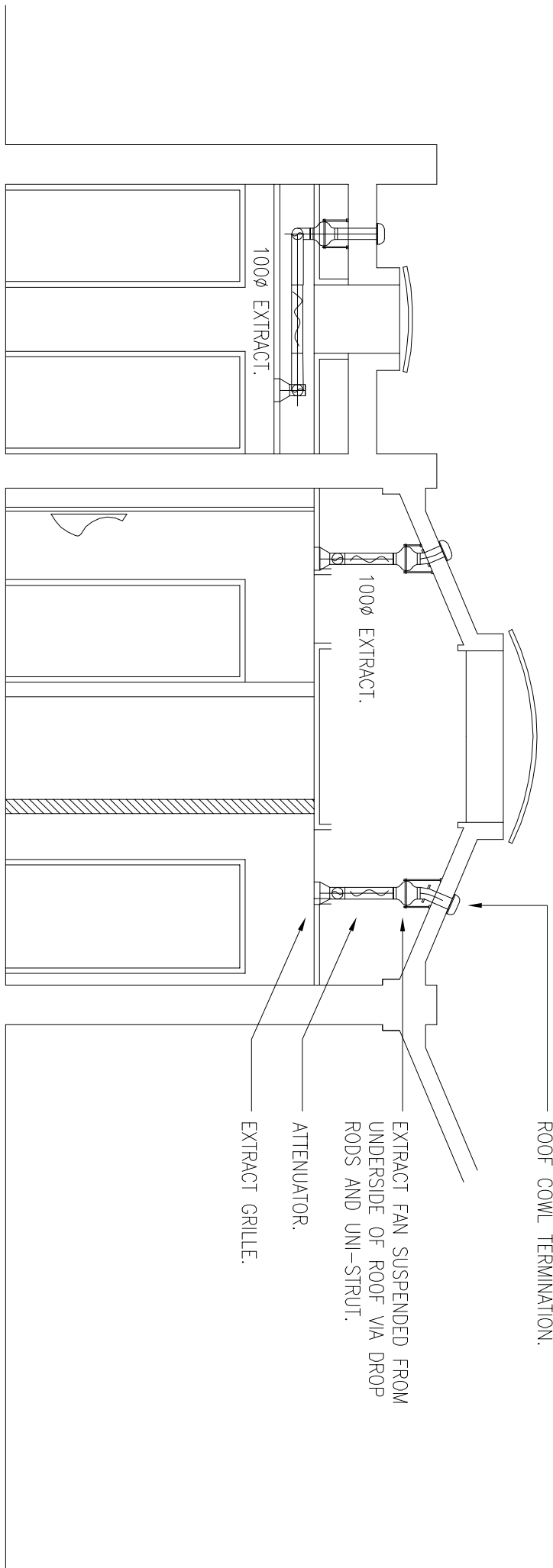
ALL OUTLETS ARE TO BE FITTED WITH SERVICE VALVES.

ALL WATER OUTLETS, PARTICULARLY ANY SPRAY FITTINGS (TAPS OR SHOWERS) SHOULD BE KEPT FREE FROM THE BUILD UP OF A BIOFILM.

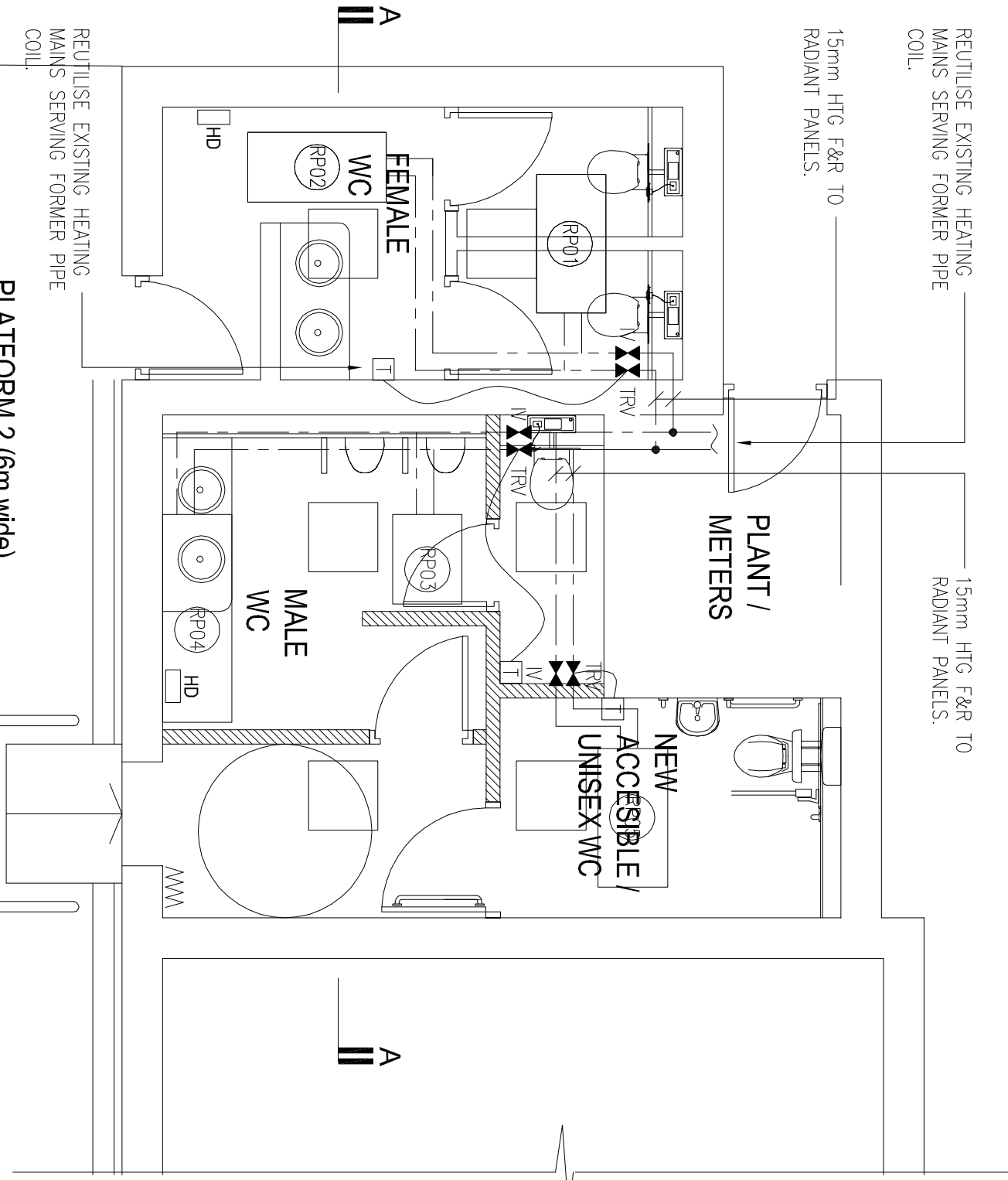
ALL OUTLETS ARE TO BE FITTED WITH SERVICE VALVES. SERVICE VALVES ARE TO BE ROBERT PEARSON TYPE ACG FLOW REGULATING VALVES COMPLETE WITH STRAINER.

BOXING IN OF PIPEWORK BY OTHERS.

A MAXIMUM OF 750MM OF FLEXIBLE SHALL BE UTILISED TO CONNECT TO ALL GRILLES.

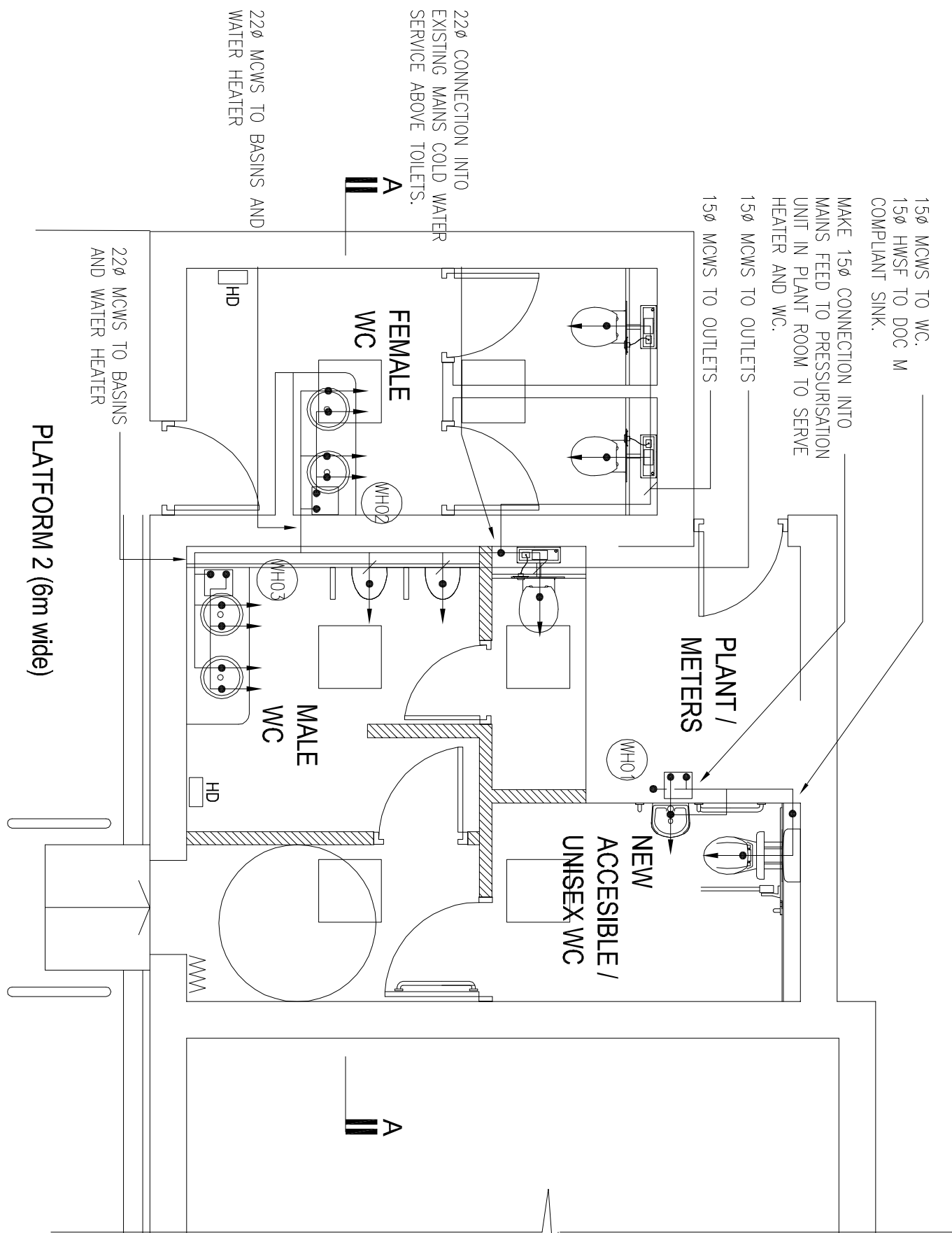


SECTION DETAIL OF VENTILATION SYSTEM



STRIP BACK ALL REDUNDANT MAINS COLD WATER SERVICES WITHIN THESE AREAS.

PLATFORM 2

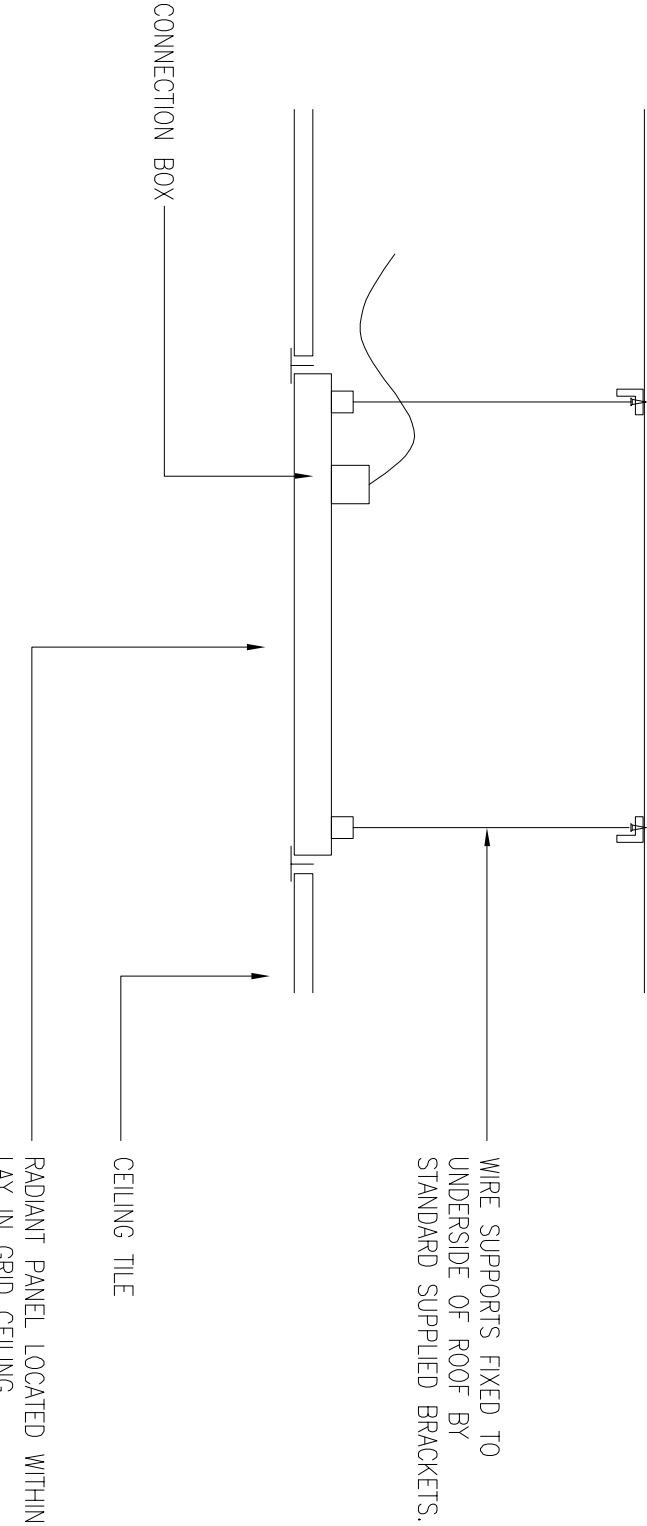


DOMESTIC WATER SERVICES

PLATFORM 2 (6m wide)

VENTILATION SERVICES

- ELECTRIC WATER DETAILS
- LOCATION
- ALL MODELS CAN BE INSTALLED UNSUPPORTED ON THE FLOOR OR WALL MOUNTED PROVIDED CONNECTIONS ARE AT THE TOP.
 - MOUNTING AS PER MANUFACTURERS INSTRUCTIONS.
- PLUMBING
- WATER CONNECTIONS 15 MM BSP
 - PRESSURE RELIEF VALVE (SEE ACCESSORIES) SET AT 6 BAR
 - SHOULD BE INSTALLED ONLY BY A SUITABLY EXPERIENCED INSTALLER OF UNVENTED ELECTRIC STORAGE WATER HEATERS
- ELECTRICAL
- TO BE WIRED TO A DOUBLE POLE FUSED SPUR, MINIMUM BREAK RATING OF 13 AMPS
 - INSTALLATION MUST COMPLY WITH CURRENT IEE REGULATIONS



RADIANT CEILING PANEL DETAIL

REV	DATE	DRAWN / CHECKED	DESCRIPTION
JACKSON • COULSON PARTNERSHIP CONSULTING CHARTERED ENGINEERS			
150017/005 JACKSON COULSON 12/05/17 TEL: 01332 92026 FAX: 01332 98809			
Client 			
Architect owen ellis Architects			
Project BUXTON STATION NSP WORKS			
Title MECHANICAL SERVICES STRIP OUT AND INSTALLATIONS			
Scale	Sheet	Date	Drawn by
1:20	A1	JULY 11	DC
Project No.	Dwg No.	Checked by	Revision
L1150	5001	RSJ	-
Status	FORM A		
Xref	L1150/drawings/booseptions/boilets		