

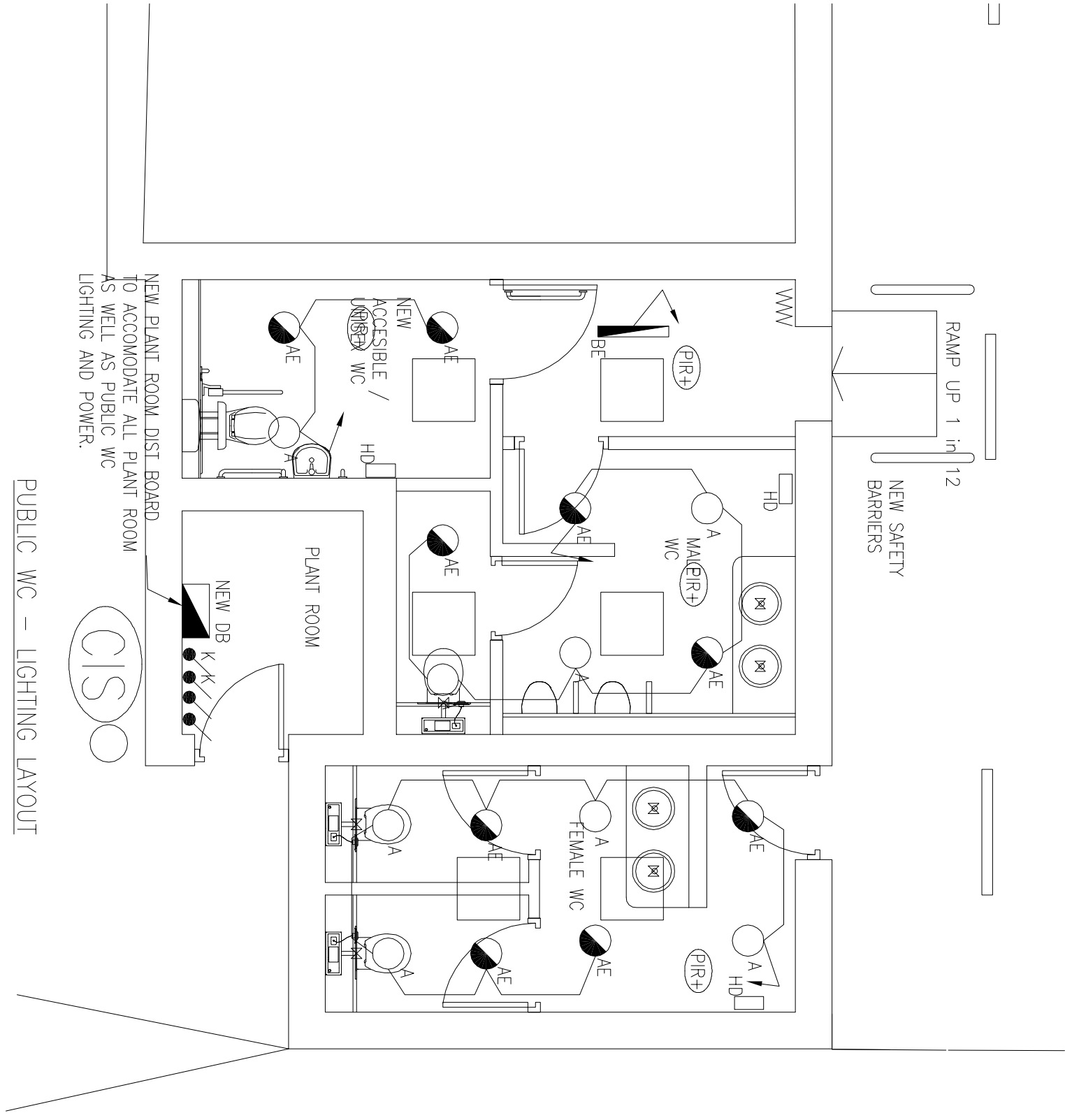
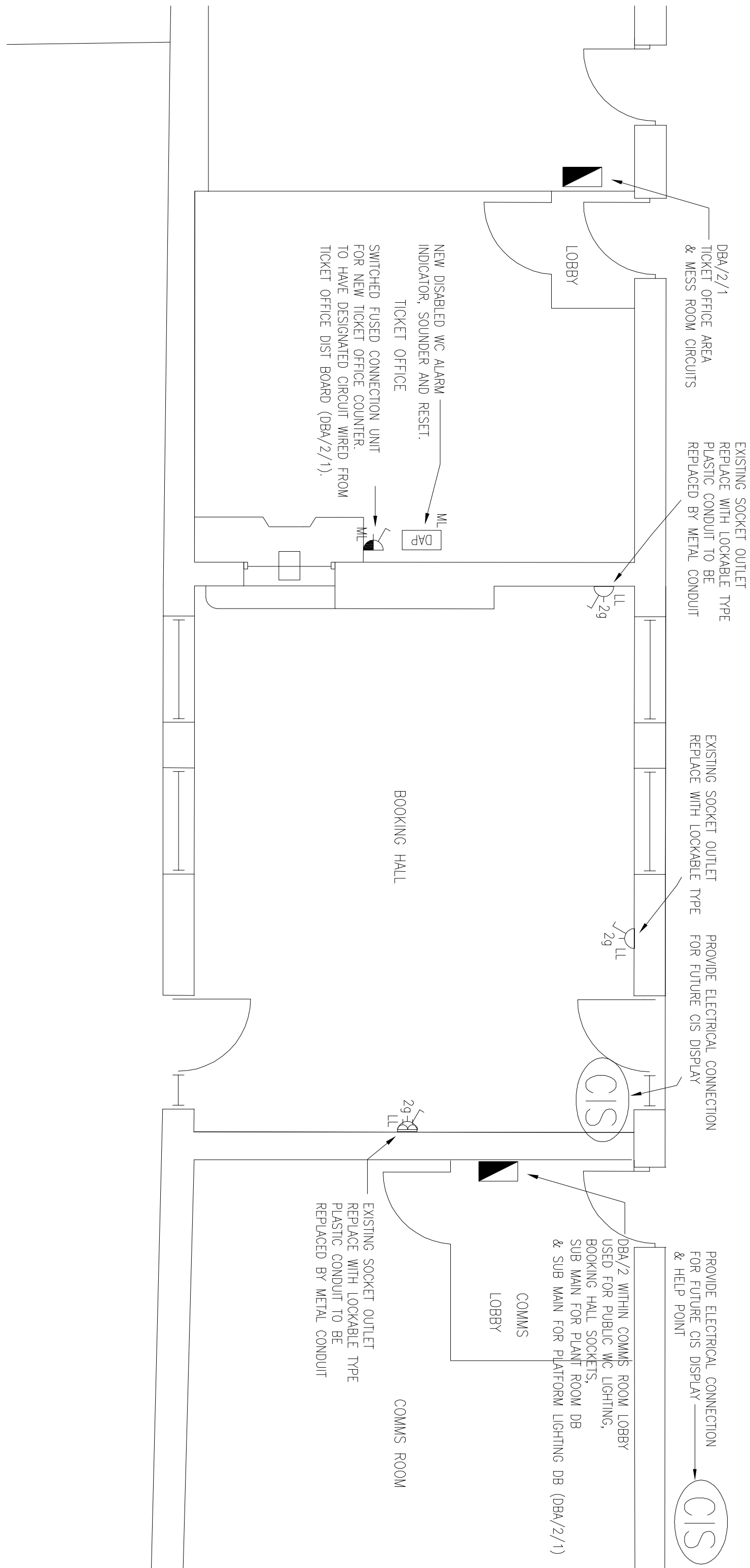
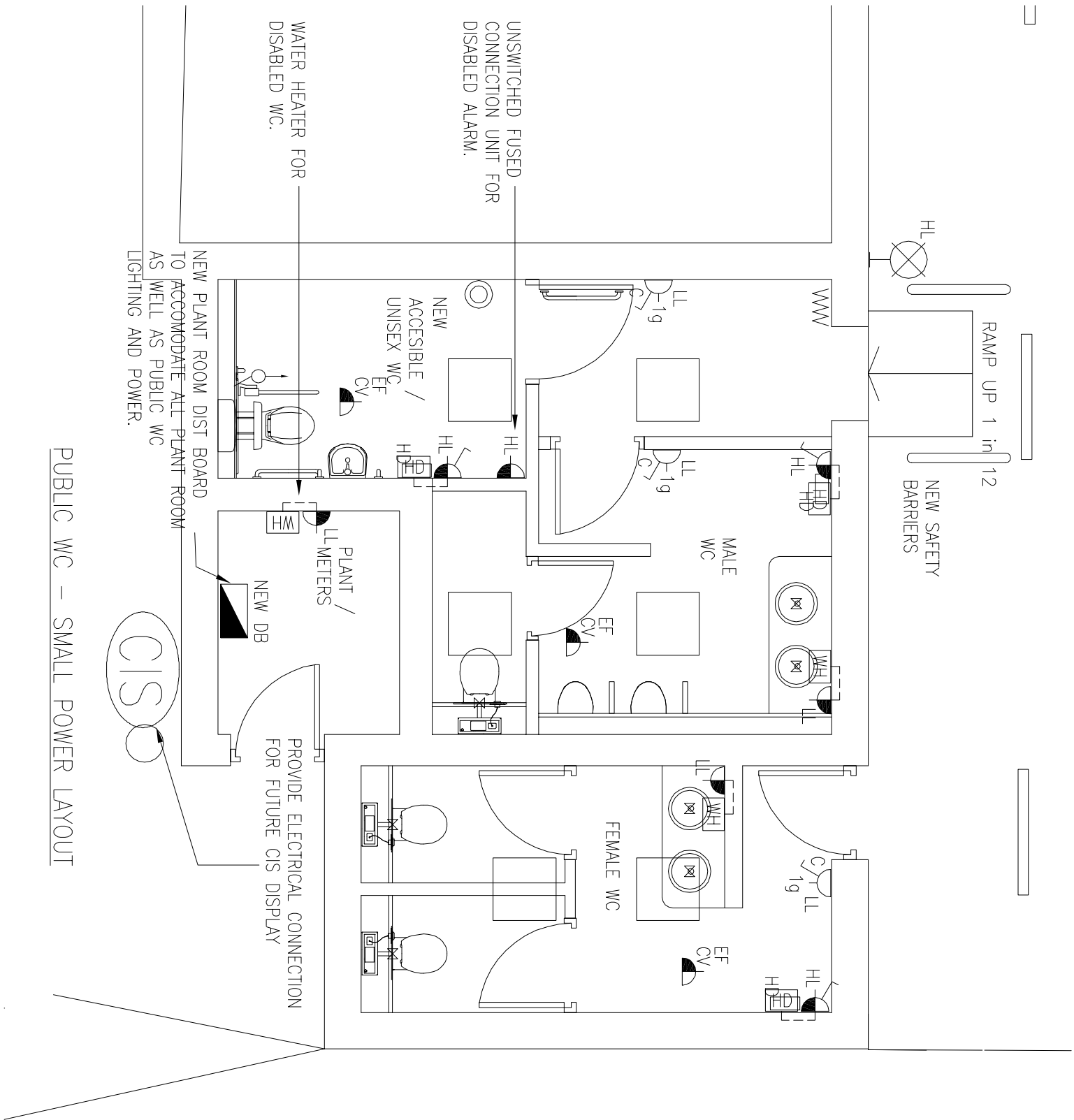
NOTES

1. THE ELECTRICAL SERVICES INSTALLATION SHALL COMPLY WITH BS7671 17th EDITION.
2. FOR CIRCUIT DETAILS REFER TO DISTRIBUTION BOARD SCHEDULE.
3. DISTRIBUTION BOARDS SHALL UTILISE MOB PROTECTIVE OUTGOING WAYS, COMPLY WITH BSEN 60439-1 AND SHALL BE PROVIDED WITH 25% SPARE CAPACITY.
4. ALL SUBMAIN CABLEING SHALL BE XLPE/SW/LSF TYPE (UNLESS OTHERWISE INDICATED).
5. THE CABLES SHALL BE LABELLED AT ALL TERMINATION POINTS.
6. ALL PUBLIC WC CIRCUITS TO BE REMOVED FROM DBA/2. THE PUBLIC WC'S ARE TO BE WHOLLY SUPPLIED FROM NEW PLANT ROOM DIST BOARD.

LEGEND

- DISTRIBUTION BOARD
- SWITCHED FUSED CONNECTION UNIT
- 2 GANG SWITCHED SOCKET OUTLET
- 1 GANG SWITCHED SOCKET OUTLET
- UNDER SINK WATER HEATER
- HAND DRYER
- DISABLED ALARM PANEL
- WALL MOUNTED REPEAT ALARM BEACON
- DISABLED ALARM RESET BUTTON
- DISABLED ALARM PULL SWITCH
- 2.28W RECESSED LUMINAIRE DOWNLIGHTER, AS DESIGN PLAN ROL
- 2.28W RECESSED LUMINAIRE, AS ABOVE WITH EMERGENCY CONVERSION
- 2.28W IP55 CEILING MOUNTED LUMINAIRE, AS WHITE ROOF STRIKE
- PASSIVE INFRA RED DETECTOR C/W VARIABLE PHOTOCELL
- CIS DISPLAY
- 1 GANG MANUAL OVERRIDE SWITCH
- EMERGENCY LIGHTING TEST KEYSWITCH
- DENOTES 'CLEANERS SOCKET'
- DENOTES 'EXTRACT FAN'
- DENOTES 'LOW LEVEL'
- DENOTES 'MID LEVEL'
- DENOTES 'HIGH LEVEL'
- DENOTES 'CEILING VOID'

PUBLIC WC – SMALL POWER LAYOUT



REV		DATE	DRN	CHKD	DESCRIPTION	
A	13 Sept	CM	NW	MINOR AMENDMENTS		
JACKSON • COULSON						
PARTNERSHIP						
CHARTERED ENGINEERS						
150017, 1505, 1506000, 15070, 15074						
TEL: 01753 872028 FAX: 01753 288010						
Client						
Architect						
Project						
BUXTON RAILWAY STATION						
Title						
ELECTRICAL SERVICES						
BOOKING HALL, TICKET OFFICE & WC BLOCK						
SMALL POWER & LIGHTING LAYOUT						
Scale	Sheet	Date	Drawn by	Checked by	Rev	
1:50	A1	AUG 11	GH	GH	A	
Project No.	Dwg No.	Revision		Status		
L1150	6002	A		Xref		
Buxton Station Layout						