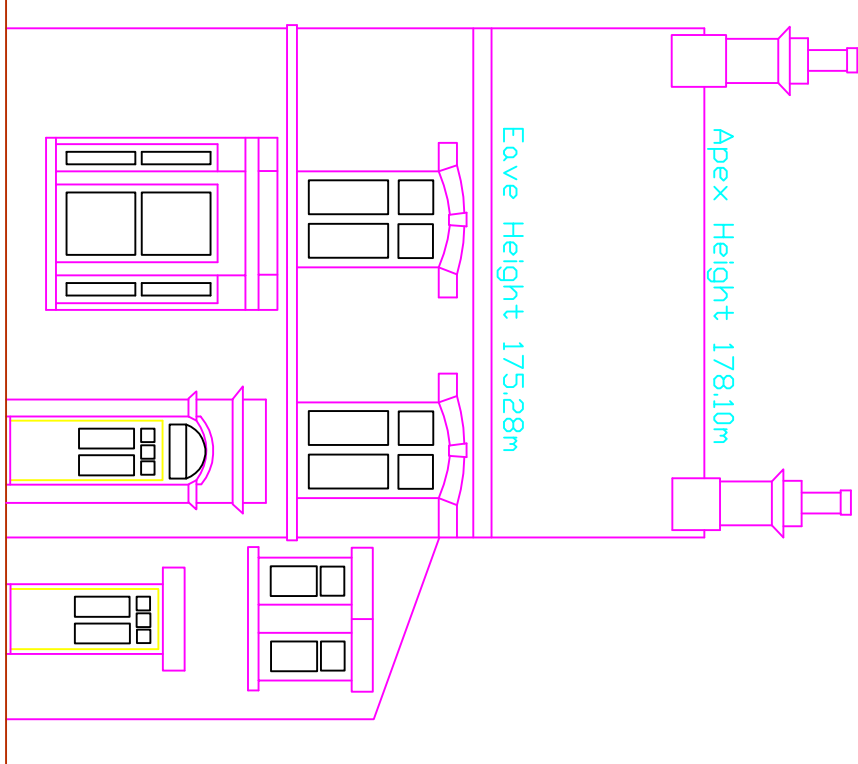
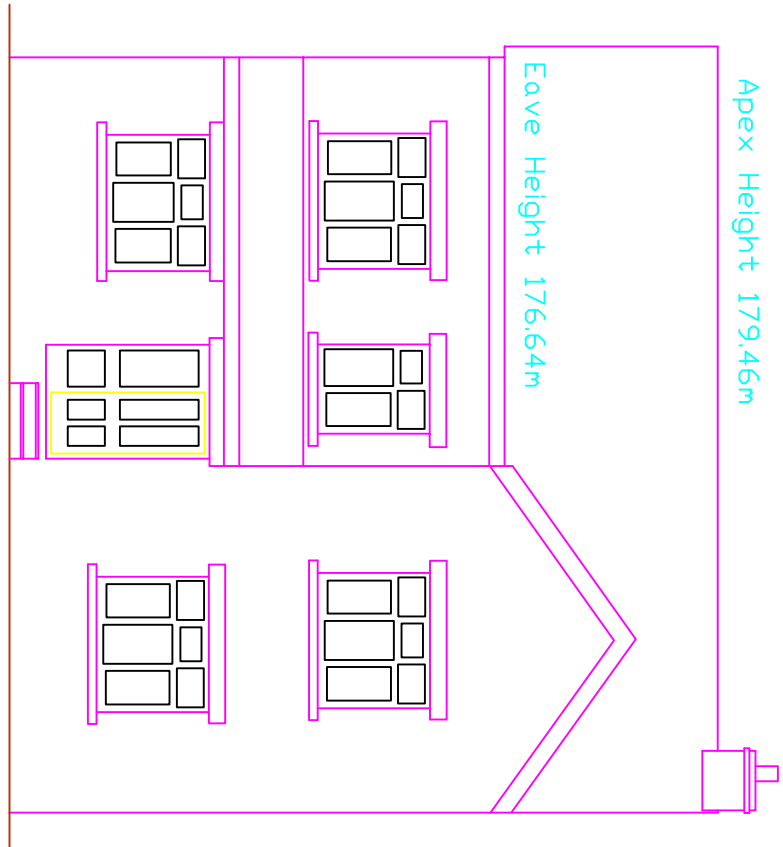


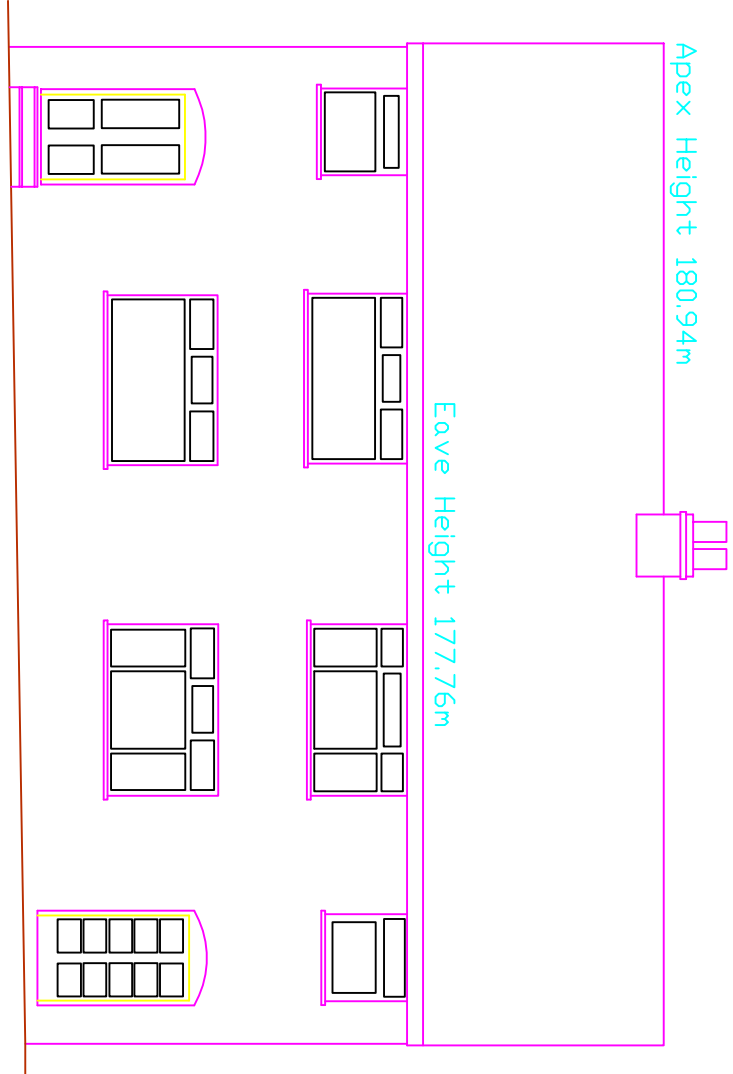
Beech House Elevation



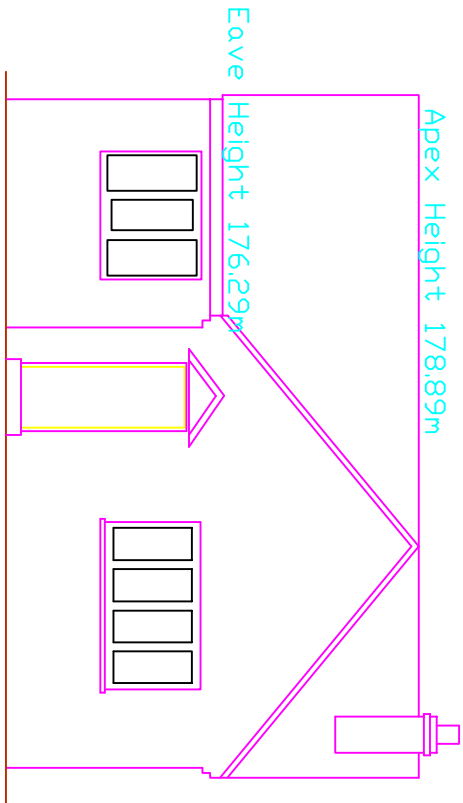
Thornwood House Elevation



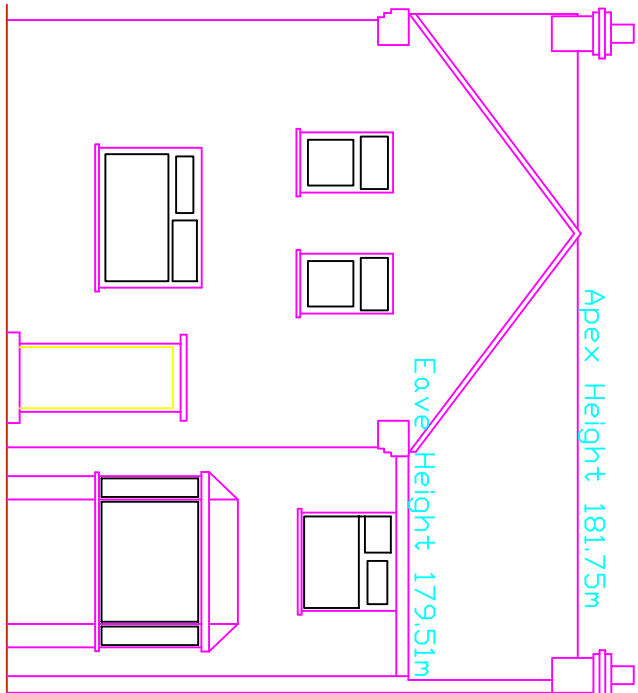
Elmwood House Elevation



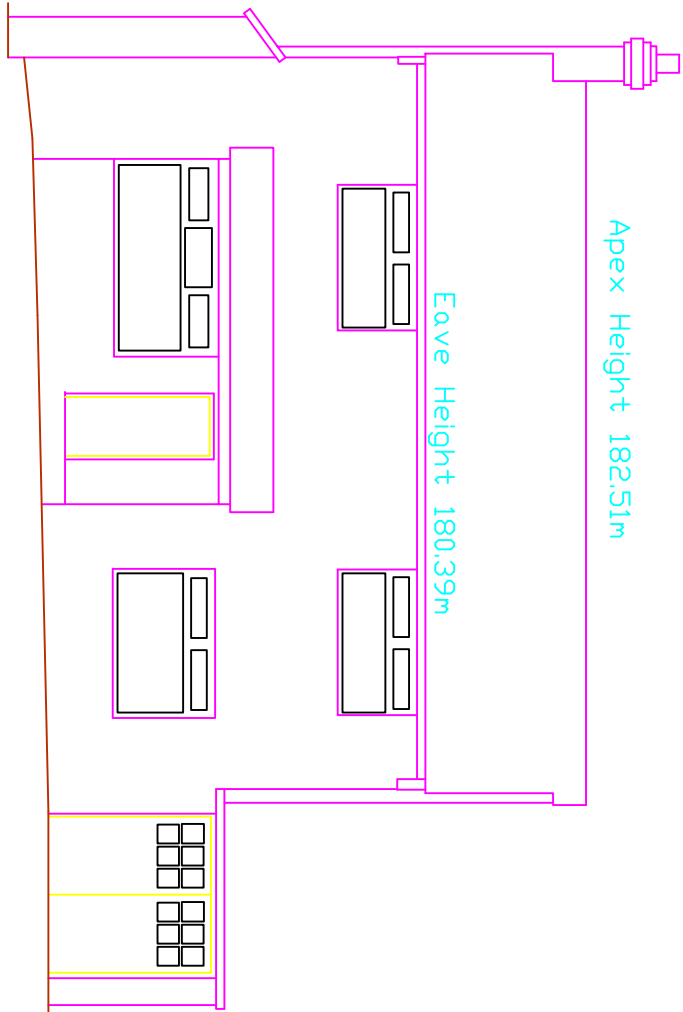
Briardene & Harmar Elevation



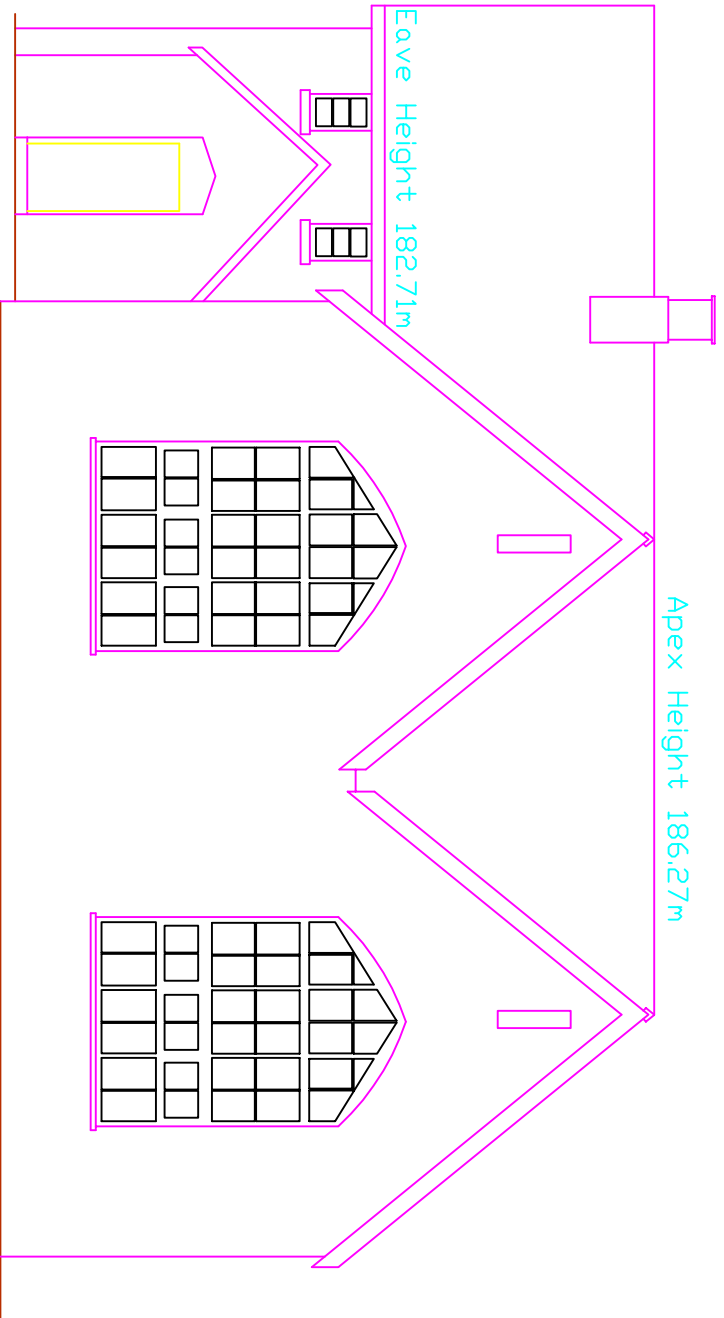
Ivy Ridge Elevation



Green Hills Elevation



Penlee Elevation



School Elevation

| ABBREVIATIONS | |
|-------------------------|-----------------------|
| AA apex height | CSU ceiling slopes up |
| AAH oron head level | DH door height |
| ASL oron springer level | FL false ceiling rt. |
| BH door height | HH head height |
| Ⓢ ceiling height | SH sill height |

| SYMBOLS | |
|--------------------|----------------------|
| ⦿ sprinkler | ⊞ fuse |
| ⦿ smoke detector | ⋈ telecom |
| ⦿ point | ⋈ hose reel |
| radiator | ⦿ fire extinguishers |
| ⦿ hydromt | ⦿ ceiling |
| ⦿ point | ⦿ light |
| ⦿ illuminated sign | ⋈ AC outlet |
| ⦿ alarm | ⋈ switched AC |
| ⦿ point | ⋈ outlet |
| ⦿ alarm | ⋈ switch |
| ⦿ emergency lights | ⋈ wall light |
| ⦿ visual warning | |

- Notes
- This survey has been completed and drawn about the original Survey Systems grid.
 - All levels are in metres and relate to O.S. Level Datum, with station SS1 having a value of 172.61m (taken from Survey Systems drawing).
 - This survey was measured for a scale of 1:100, any subsequent enlargements should be verified on site.

| Rev | Date | Revision Detail |
|-----|------|-----------------|
| | | |
| | | |
| | | |

Apex Surveys

Apex Surveys Limited
12th Floor
Portland Tower
Portland Street
Manchester, M1 3JF
T +44 (0)161 238 4073
F +44 (0)161 238 7974
E info@apexsurveys.co.uk
W www.apexsurveys.co.uk

Elevations
Church Lane, New Mills

TADW Architects

| | | | | | |
|-------|------------|---------|-------|----------------|---------|
| Drawn | BH/AH | Checked | BH/AH | Project Number | M1158/2 |
| Date | Sept 2009 | | | | |
| Scale | 1:100 @ A1 | | | | |