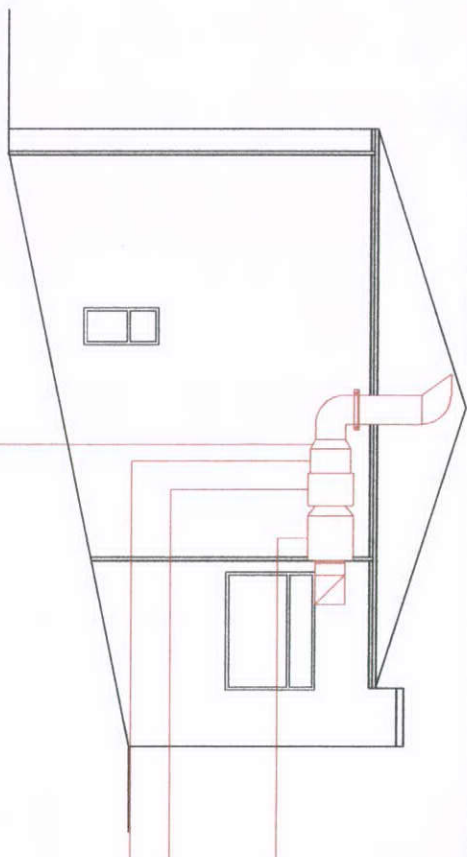
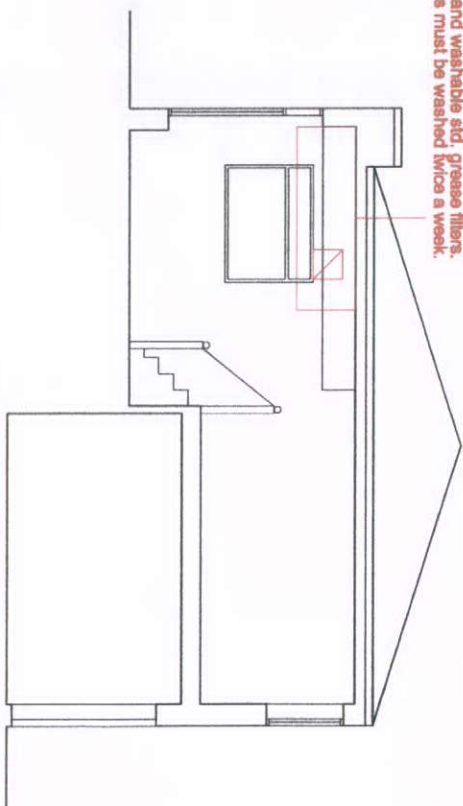


FRONT ELEVATION

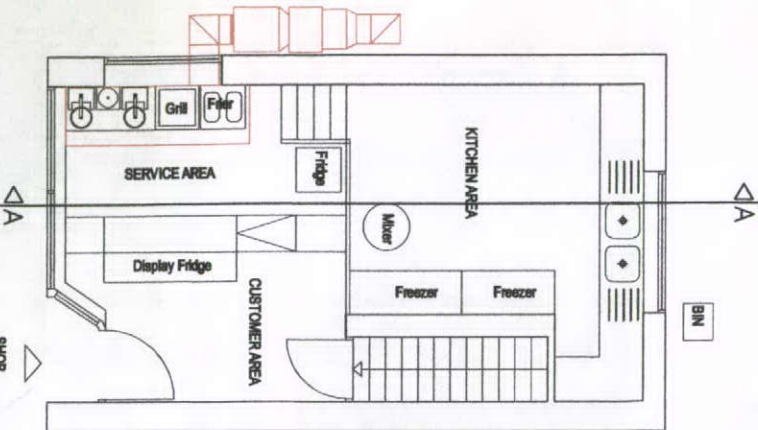


SIDE ELEVATION

1 no s/s steel kitchen extract canopy
2500x800x800 mm each with 3 no
removable and washable s/s grease filters.
Filters must be washed twice a week.



AA SECTION



GROUND FLOOR PLAN

Activated carbon filter box 207
coconut shell type panels
(596x596x25mm) filters.
Dwell time is calculated 0.18
s. Carbon panels must be
replaced every 8-12 months.
DS28 1401 Silencer 56.0 mm
long to reduce the noise level
7 to 10 dB (A)
56 JM / 16 / 4 / 5 / 32 - C T9
(220V) Woods kitchen
extraction fan Inlet side and
outlet side both connected to
the silencer.
Noise level of the fan 62 dB(A)
@ 4 meter distance without
silencer.
Flexible canvas connection
between duct and fan.

AMENDMENTS

A	
B	
C	
D	
E	
F	

SEVENTH DESIGN

50 WALFORD ROAD
LONDON N16 8ED
M-07882038642

CONTRACT

98
MARKET STREET
CHAPEL-BELL-FRITH 8023 08Z
PROPOSED GROUND FLOOR PLAN
AA SECTION, SIDE
AND FRONT ELEVATION

SCALE

1:100GM DATE 07/11

DRAWN BY

EM CHECKED EM

DRAWING NO.

1107 P 1