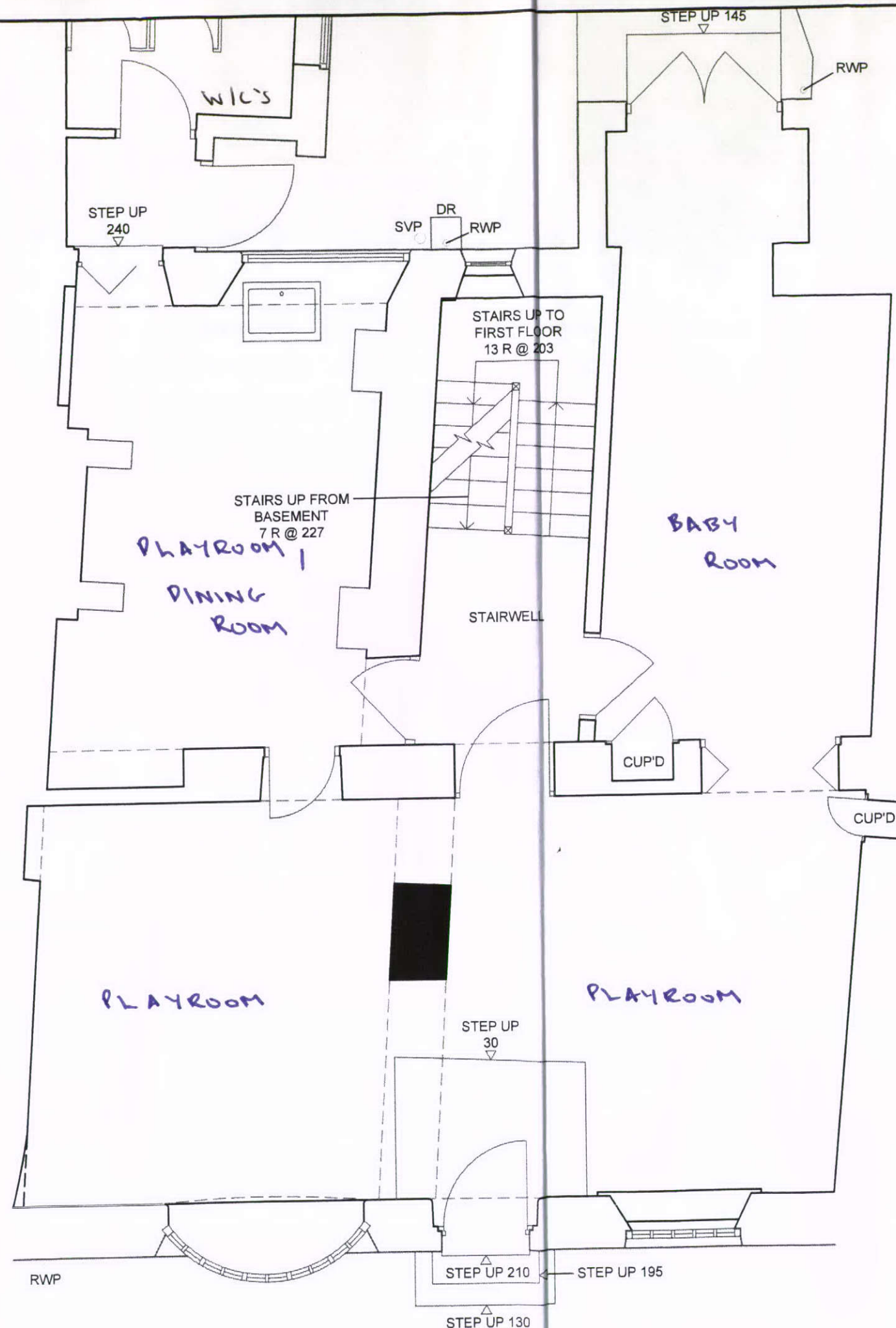


2011/04/12



GROUND FLOOR & REAR
SITE BOUNDARY PLAN

Legends:
DNG 08

| Level Data | | Fence Types | |
|--|-----------------------|-------------|-----------------|
| Level | + 00.75 | BSW | Basin Wall |
| Trees | | CB | Close Board |
| Trees Are Drawn To Scale On The Survey. Description Should Only Be Used As A Guide | | CC | Close Board |
| Branch | Sh | CL | Close Board |
| Type | Height | CM | Close Board |
| UK | Unknown Tree Type | CP | Close Board |
| Abbreviations | | CR | Close Board |
| ACU | Air Conditioner Unit | CS | Close Board |
| BA | Barrier | CT | Close Board |
| BB | Belted Balcony | CC | Close Board |
| BO | Boiler | CD | Close Board |
| BS | Bus Stop | CE | Close Board |
| BU | Buik | CF | Close Board |
| CATV | Cable TV Cover | CG | Close Board |
| CH | Ceiling Height | CH | Covering Height |
| CNC | Ceiling Height Change | CH | Covering Height |
| CL | Cover Level | CH | Covering Height |
| CPS | Concrete Paving Slab | CH | Covering Height |
| CSU | Ceiling Slopes Up | CH | Covering Height |
| CH | Door Height | CH | Covering Height |
| CP | Down Pipe | CH | Covering Height |
| DP | Down | CH | Covering Height |
| EH | Eaves Height | CH | Covering Height |
| ER | Earth Road | CH | Covering Height |
| FD | Floor Duct | CH | Covering Height |
| FFL | Finished Floor Level | CH | Covering Height |
| FL | Floor Level | CH | Covering Height |
| FH | Fire Hydrant | CH | Covering Height |
| GD | Gully Grate | CH | Covering Height |
| H | Height | CH | Covering Height |
| IC | Inspection Chamber | CH | Covering Height |
| LP | Lane Post | CH | Covering Height |
| MH | Manhole | CH | Covering Height |
| OH | Overing Height | CH | Covering Height |
| PH | Post Box | CH | Covering Height |
| PK | Parking Meter | CH | Covering Height |
| PC | Post | CH | Covering Height |
| PE | Post | CH | Covering Height |
| RA | Rail | CH | Covering Height |
| RE | Rodding Eye | CH | Covering Height |
| RS | Road Sign | CH | Covering Height |
| RWP | Road Works | CH | Covering Height |
| S | Sign | CH | Covering Height |
| SC | Shop Crock | CH | Covering Height |
| SCD | Suspended Ceiling | CH | Covering Height |
| SI | Sign Post | CH | Covering Height |
| STN | Station | CH | Covering Height |
| SV | Step Valve | CH | Covering Height |
| SWP | Soil Vent Pipe | CH | Covering Height |
| TAC | Tank Room Cover | CH | Covering Height |
| TC | Telephone Cover | CH | Covering Height |
| TE | Telephone | CH | Covering Height |
| TL | Traffic Light | CH | Covering Height |
| TP | Telephone Pole | CH | Covering Height |
| UC | Unknown Cover | CH | Covering Height |
| UL | Underneath | CH | Covering Height |
| UNB | Underneath | CH | Covering Height |
| UTL | Unable To LB | CH | Covering Height |
| VP | Vent Pipe | CH | Covering Height |
| WCH | Window Over Height | CH | Covering Height |

| REV | DETAIL OF AMENDMENT | DRAWN BY | CHECKED BY | DATE |
|-----|---------------------|----------|------------|------|
| | | | | |



CUSTOMER: [Redacted]

SITE ADDRESS: [Redacted]

DRAWING TITLE: [Redacted]

PROJECT NO.: [Redacted] DRAWING NO.: [Redacted] DRAWN BY: [Redacted]

SCALE: [Redacted] CHECKED BY: [Redacted] DATE: [Redacted] REVISION: [Redacted]

C.A. Design Services Ltd
The Design Centre
Hewett Road
Gepston Hall
Great Yarmouth
Norfolk NR31 0NN
Tel: 01493 442444
Fax: 01493 442480
www.cadesignservices.co.uk

Retail Design & Planning
Space Planning
Measured Building Surveys
H & E Surveys
Site Surveys
CAD Drafting
Document Scanning
Microstation Training
AutoCAD Training
sales@adesignservices.co.uk