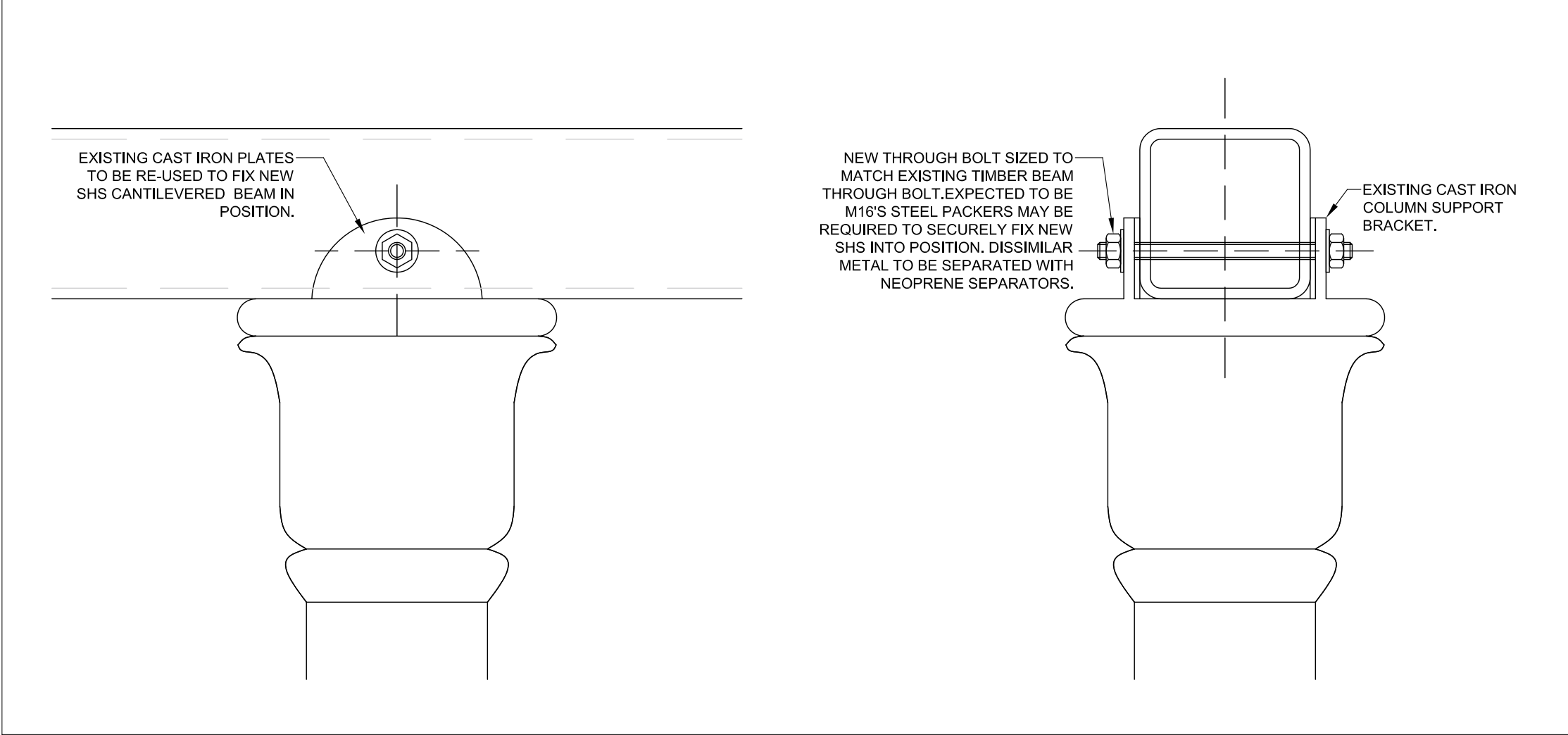
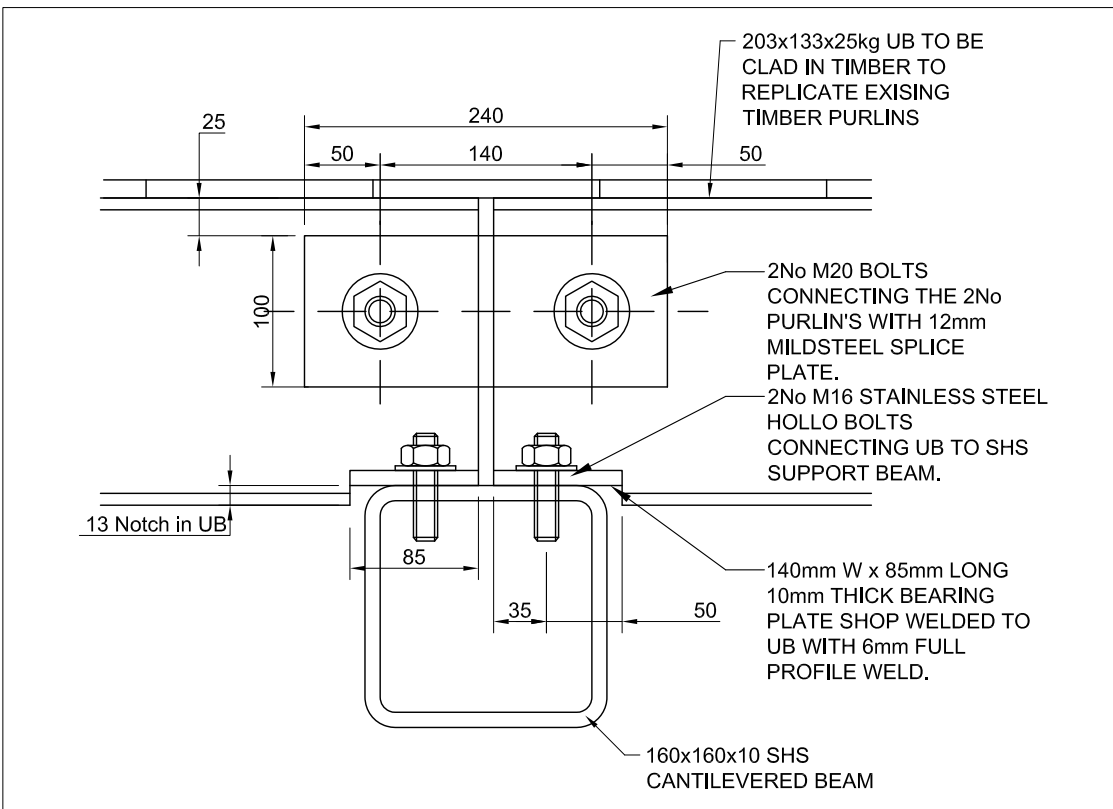


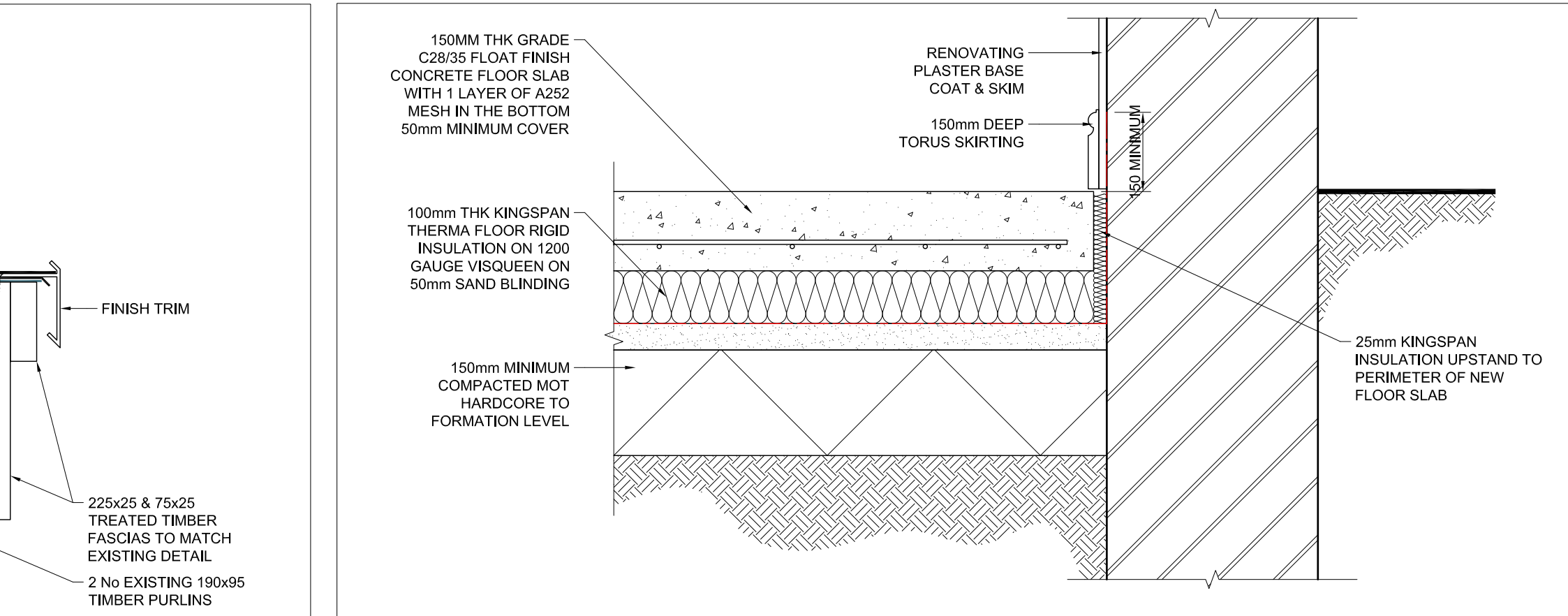
12 TYPICAL ENTRANCE CANOPY VERGE DETAIL
Scale: 1:5



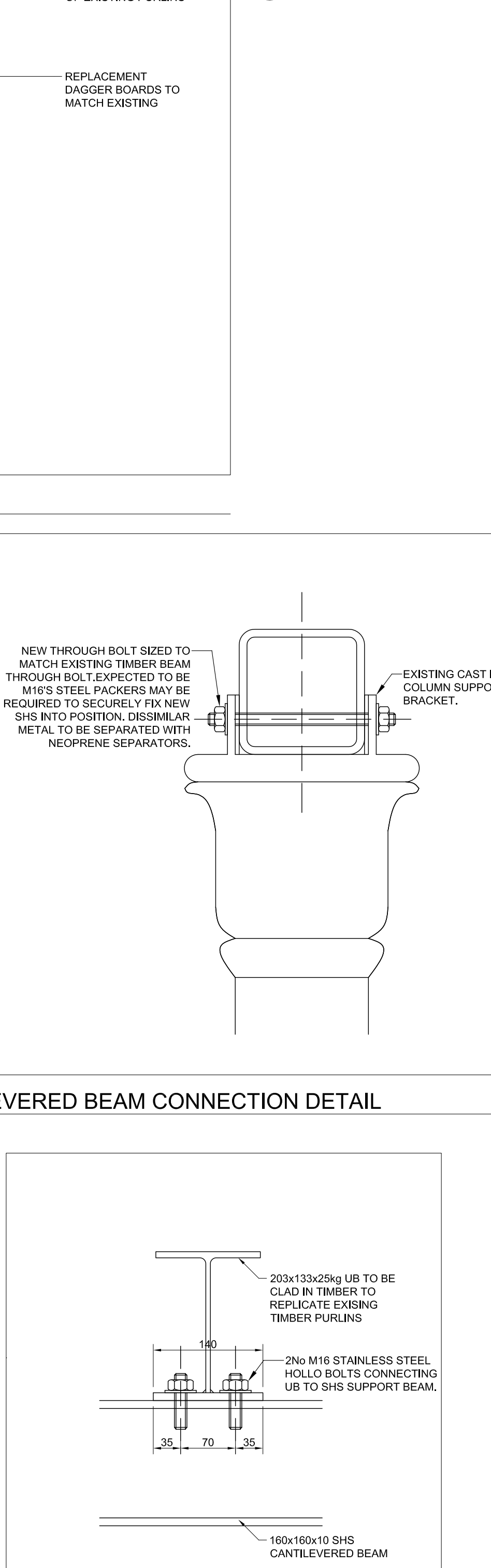
14 TYPICAL ENTRANCE CANOPY COLUMN TO CANTILEVERED BEAM CONNECTION DETAIL
Scale: 1:5



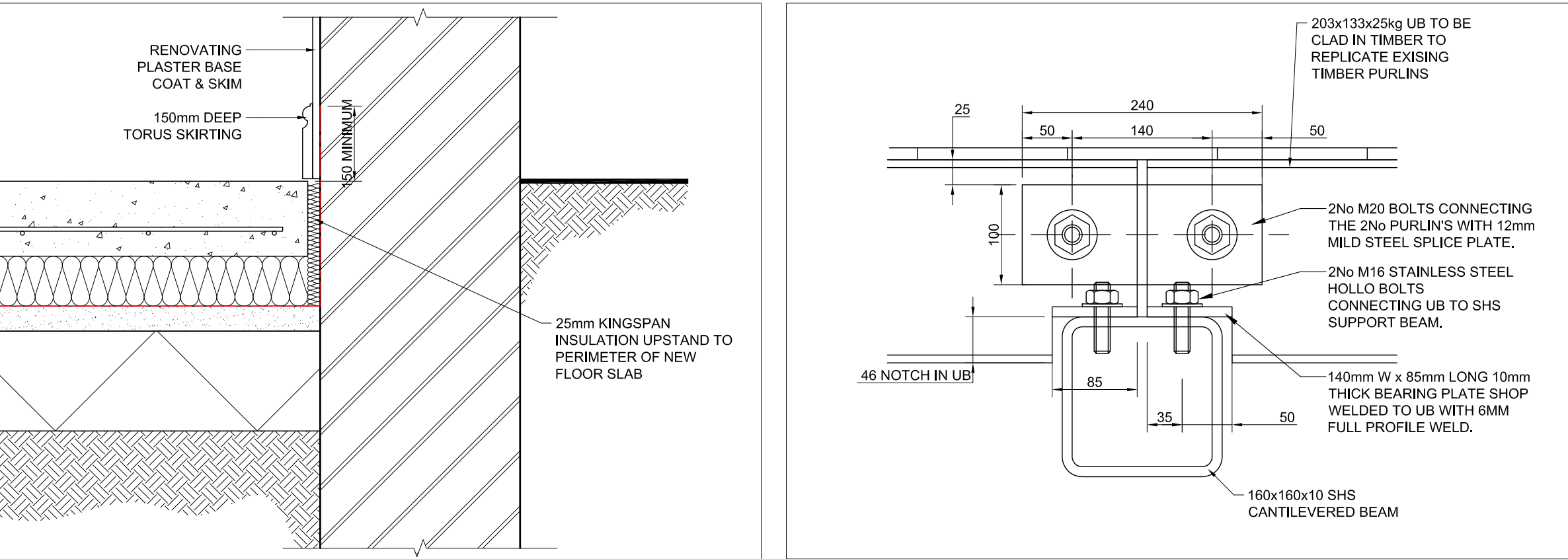
16 TYPICAL ENTRANCE CANOPY CANTILEVERED BEAM / PURLIN CONNECTION DETAIL
Scale: 1:5



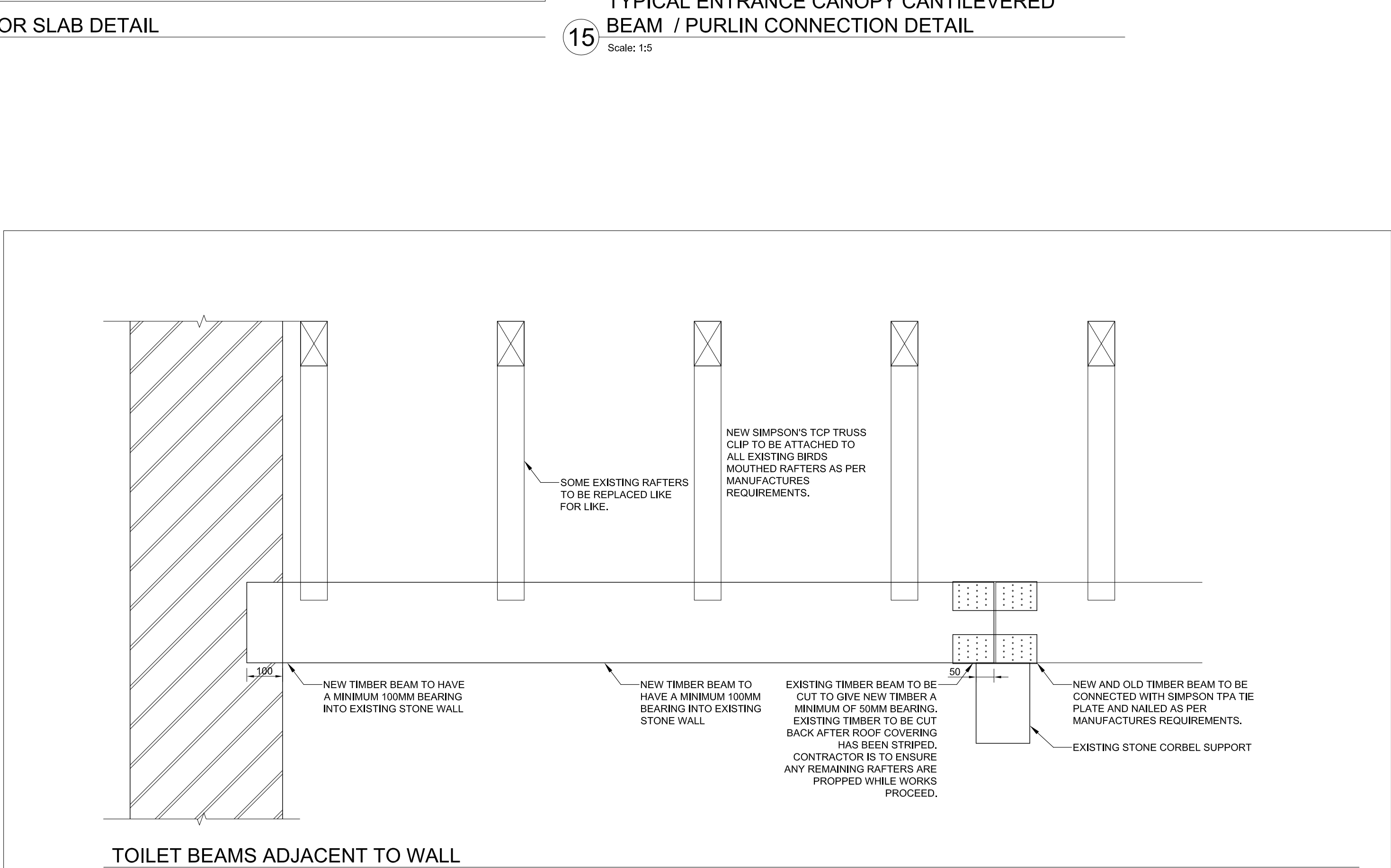
13 NEW LOCKER ROOM FLOOR SLAB DETAIL
Scale: 1:10



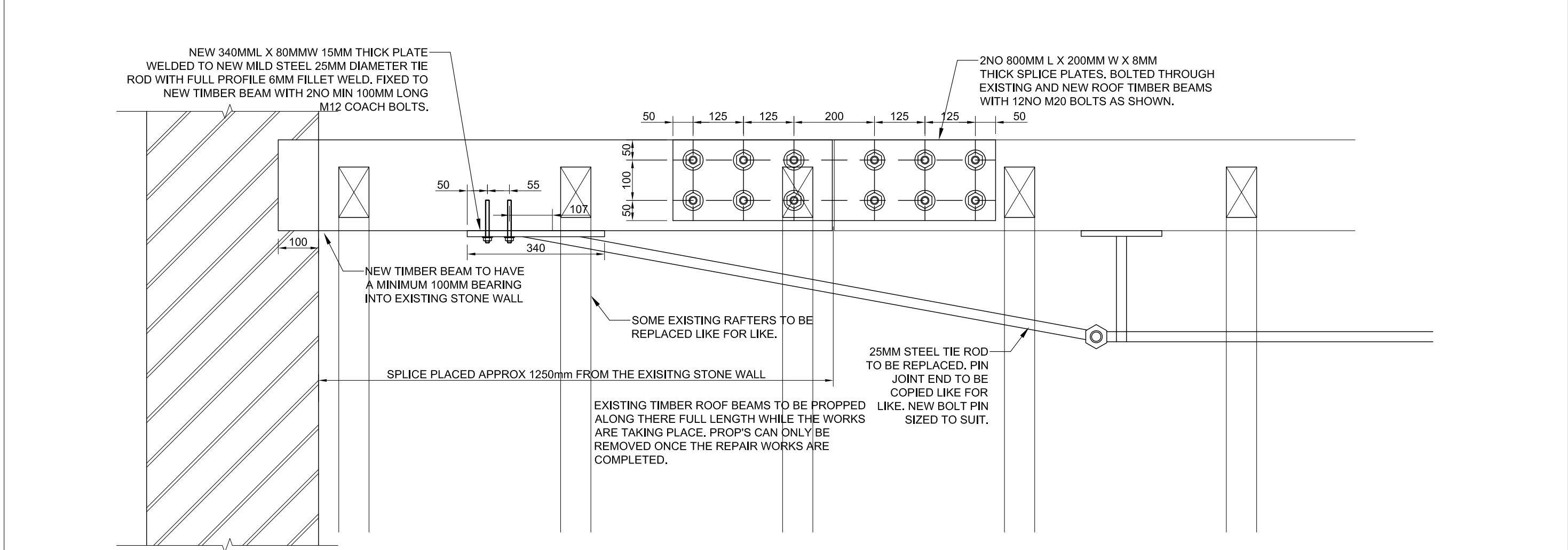
17 TYPICAL ENTRANCE CANOPY CANTILEVERED BEAM / PURLIN SECTION
Scale: 1:5



15 TYPICAL ENTRANCE CANOPY CANTILEVERED BEAM / PURLIN CONNECTION DETAIL
Scale: 1:5



TOILET BEAMS ADJACENT TO WALL

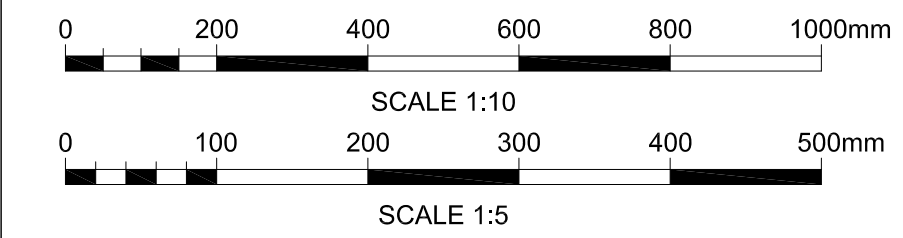


TOILET BEAMS SUPPORTING ROOF LIGHT

18 TYPICAL TOILET ROOF PURLIN SPLICING DETAIL
Scale: 1:10

Legend/Notes	
THIS DRAWING IS TO BE READ WITH AND FORMS PART OF THE PROJECT DOCUMENTS LISTED BELOW	
DOCUMENTS:	
BDG0069/CIV/NCC	NON-COMPLEX DESIGN PACKAGE
BDG0069/DRG/A001	EXISTING SITE & LOCATION PLANS
BDG0069/DRG/A002	EXISTING & PROPOSED ELEVATIONS
BDG0069/DRG/A003	GENERAL ARRANGEMENT PLANS
BDG0069/DRG/A004	REPAIR WORKS PLANS
BDG0069/DRG/A005	EXISTING & PROPOSED TYPICAL SECTIONS
BDG0069/DRG/A006	TYPICAL DETAILS SHEET 1 OF 3
BDG0069/DRG/A007	TYPICAL DETAILS SHEET 2 OF 3
BDG0069/DRG/A008	TYPICAL DETAILS SHEET 3 OF 3
BDG0069/DRG/A009	PROPOSED TRIPLE CHIMNEY STACK REPLACEMENT
BDG0069/DRG/A010	PROPOSED SINGLE CHIMNEY STACK REPLACEMENT
BDG0069/DRG/E001	ELECTRICAL LAYOUT / DETAILS
BDG0061/CIV/SPEC/A01	NBS SPECIFICATION
MODEL CLAUSES:	
NRL/3/CIV/140/10	GENERAL
NRL/3/CIV/140/40	DEMOLITION AND SITE CLEARANCE
NRL/3/CIV/140/80	STRUCTURAL CONCRETE
RT/CE/C/008/150	BRICKWORK, BLOCKWORK & MASONRY
RT/CE/C/008/153	BRICKWORK & MASONRY REPAIRS
NRL/3/CIV/140/160	GENERAL REQUIREMENTS FOR STRUCTURAL TIMBER
NRL/3/CIV/140/161	DESIGN REQUIREMENTS FOR STRUCTURAL TIMBER
NRL/3/CIV/140/162	WORKMANSHIP FOR STRUCTURAL TIMBER
NRL/3/CIV/140/163	MAINTENANCE AND REPAIR OF STRUCTURAL TIMBER
NRL/3/CIV/140/164	TIMBER PRESERVATION AND FIRE PROTECTION
NRL/3/CIV/140/170	GENERAL REQUIREMENTS FOR PROTECTIVE TREATMENTS
NRL/3/CIV/140/171	MAINTENANCE COATING WORKS
NRL/3/CIV/140/173	PROTECTIVE COATING OF EXISTING STRUCTURAL STEELWORK AND IRONWORK
NRL/3/CIV/140/174	PROTECTIVE COATING OF TIMBER SURFACES
NRL/3/CIV/140/175	PROTECTIVE COATING OF CONCRETE & MASONRY SURFACES
NRL/3/CIV/140/176	PROTECTIVE COATING SYSTEMS

- GENERAL NOTES:
- ALL WORKS TO BE UNDERTAKEN IN ACCORDANCE WITH CURRENT AND APPLICABLE RAILWAY GROUP AND NETWORK RAIL LINE STANDARDS.
 - ALL DIMENSIONS ARE SHOWN IN MILLIMETRES UNLESS NOTED OTHERWISE.
 - USE ONLY DIMENSIONS STATED ON THE DRAWINGS DO NOT TAKE SCALED DIMENSIONS.
 - ALL LEAD FLASHING, SOAKERS, STEPPED FLASHING, COVER FLASHING, APRON FLASHING, CHIMNEY FLASHING, PITCHED VALLEYS ETC. TO BE CARRIED OUT IN ACCORDANCE WITH THE LEAD SHEET ASSOCIATION DETAILING.
 - ALL STEELWORK TO BE S355J2H



A01	16/07/2010	ISSUED FOR NON-COMPLEX WORK	DPC	JW	JW
Rev	Date	Description of Revisions	Drawn	Chkd	Appr

SAFETY HEALTH AND ENVIRONMENTAL INFORMATION					
THE HAZARDS AND RISKS ASSOCIATED WITH THE WORKS SHOWN ON THIS DRAWING AND DESCRIBED IN THE SCHEDULE OF WORKS ARE CONSIDERED TO BE WITHIN THE REASONABLE, NORMAL AND ACCEPTABLE LIMITS FOR GENERAL BUILDING AND MAINTENANCE WORKS. PLEASE REFER TO DESIGNER RISK ASSESSMENT					
DOCUMENT REF: BDG0069/DRA/A01					

Status	FOR ISSUE NON COMPLEX WORKS
--------	-----------------------------

Network Rail

INVESTMENT PROJECTS
BUILDINGS & CIVILS
SQUARE ONE
4 TRAVIS STREET
MANCHESTER
M1 2NY

Designers
**Investment Projects
Buildings & Civils
Building Design Group
Manchester**

Square One
4 Travis Street
Manchester
M1 2NY
Tel: 0161 880 3888
Fax: 0161 880 3981

Project BDG0069

**BUXTON STATION
DPC/DRY ROT REPAIRS, STATION
ROOF & CANOPY ROOF REPAIRS**

Drawing Title
**TYPICAL DETAILS
SHEET 3 OF 3**

Designer	A.WADIE	Signed	Date JULY 2010
Drawn	D.CARVER	Signed	Date 14/07/2010
Checked	J.WILDGOOSE	Signed	Date 15/07/2010
Approved	J.WINSTANLEY	Signed	Date 16/07/2010

Scale(s) at A1 1:5, 1:10 Sheet Size A1 594 x 841 ELR & Mileage BEJ 19 MILES 9 CHAINS

Drawing Number	BDG0069/DRG/A008	Revision	A01
----------------	------------------	----------	-----