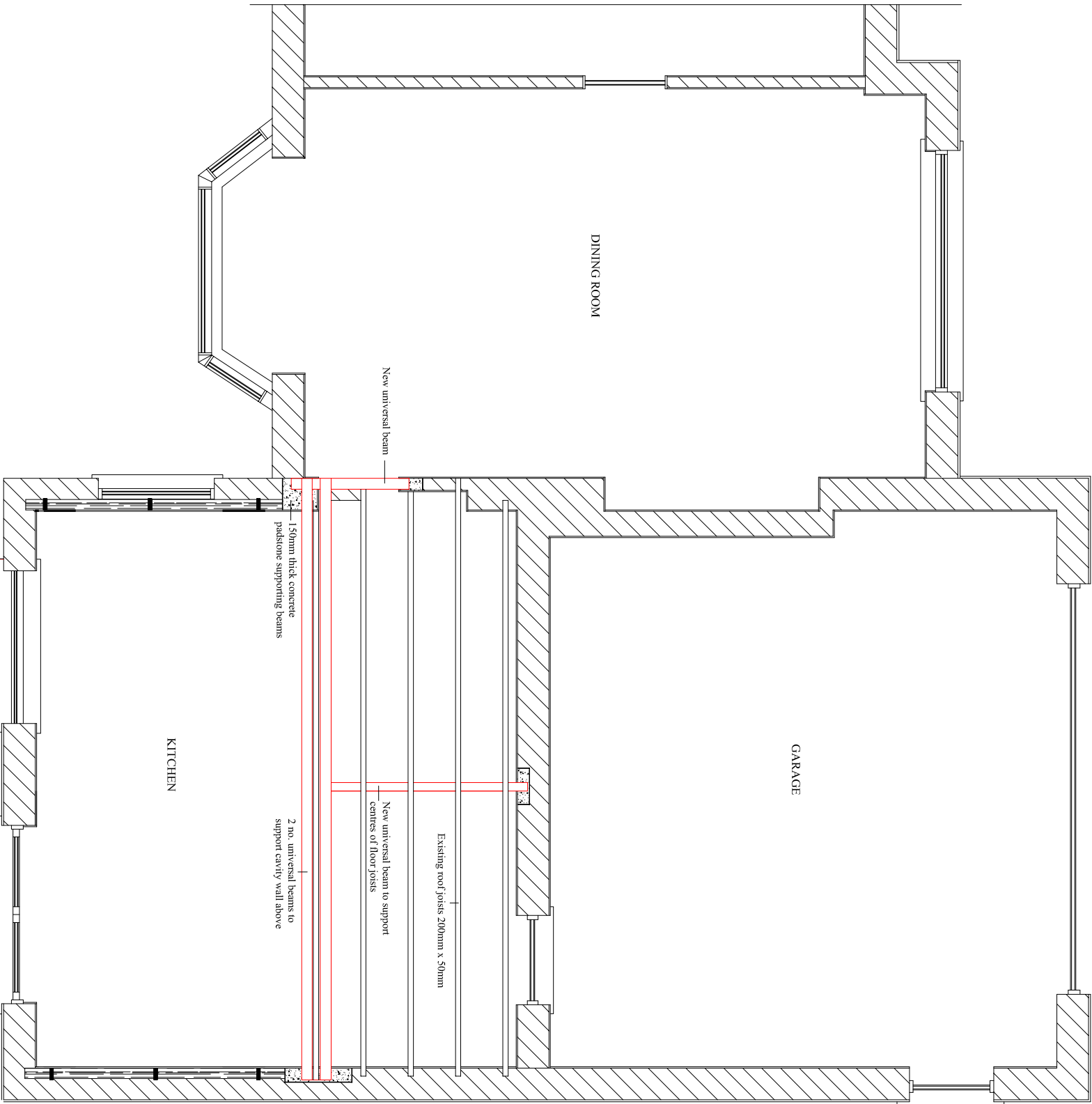


PROPOSED PLAN OF STRUCTURAL SUPPORTS TO NEW
GABLE WALL AND FLOOR JOIST SUPPORTS



NOTE:
All new steel support members are based on the approved engineering calculation and supporting details and should only be positioned and fixed in accordance to the detail approved. All steel is to be sat on concrete padstones as detailed and have fire protection to a half hour standard. The contractor is responsible for the safe fixing, positioning and support to the existing property during this operation.